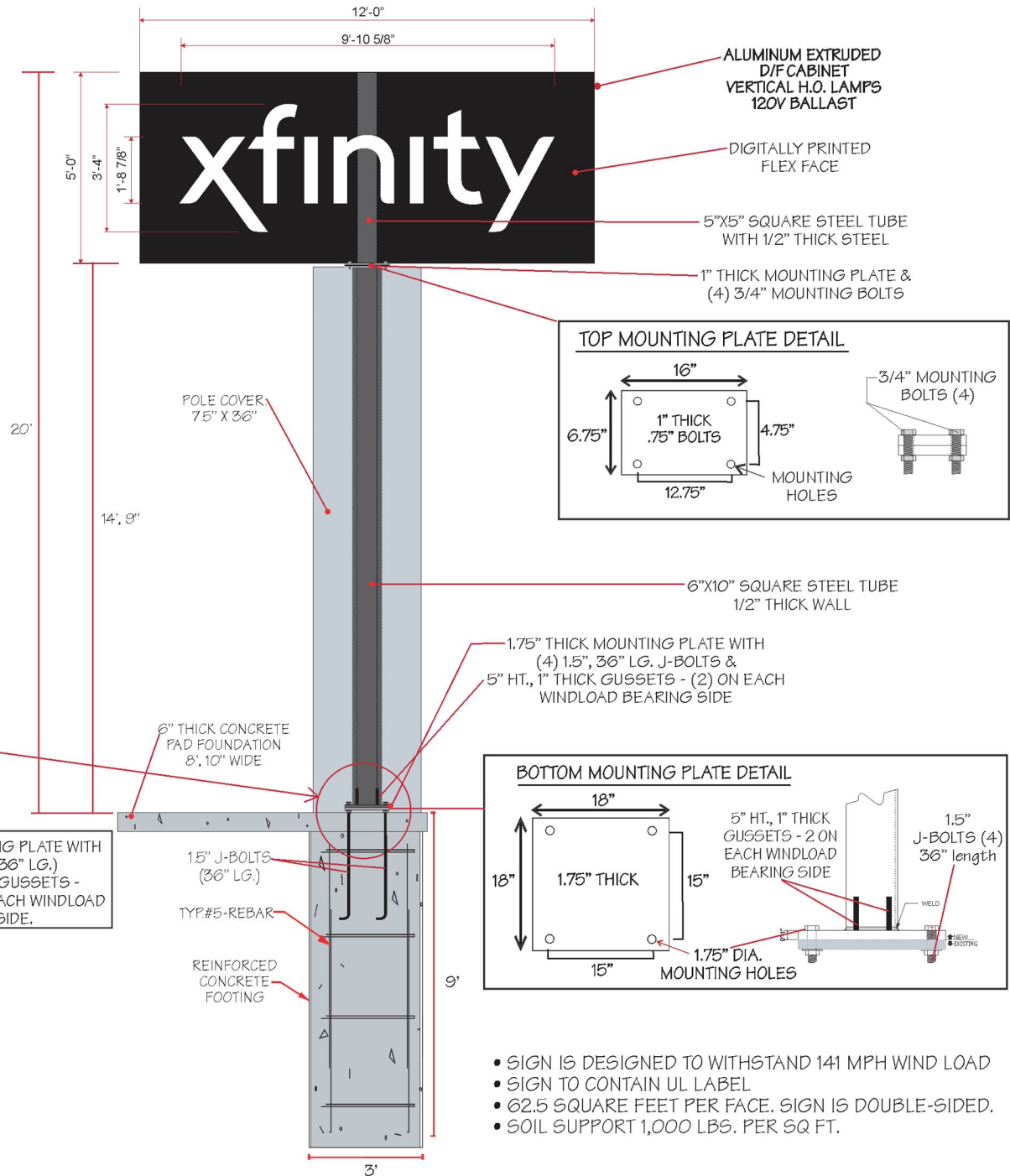
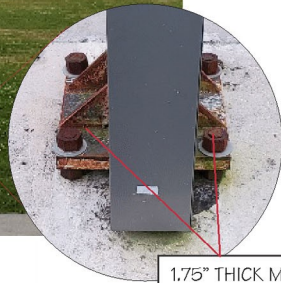


• Two sided Backlit Pole-mounted Sign Cabinet



DAMMON

ENGINEERING, INC.

LOUISIANA & MISSISSIPPI
Natl. Louisiana Ph: 985-649-9899 Fax: 985-641-5859
www.dammonengineering.com info@dammonengineering.com

ALTERNATIVE SIGNS & GRAPHICS

1301 EDWARDS AVE., SUITE A • ELMWOOD BUSINESS PARK • ELMWOOD, LA 70123
PHONE: 504-734-9899 FAX: 504-734-9369 TOLL FREE: 1-888-893-2742

JOB NAME: _____
ADDRESS: _____
SALES PERSON: _____
DESIGNER: _____
DATE: _____

- SIGN IS DESIGNED TO WITHSTAND 141 MPH WIND LOAD
- SIGN TO CONTAIN UL LABEL
- 62.5 SQUARE FEET PER FACE. SIGN IS DOUBLE-SIDED.
- SOIL SUPPORT 1,000 LBS. PER SQ FT.