

NDB RWY 35

ATHENS MUNI (F44)

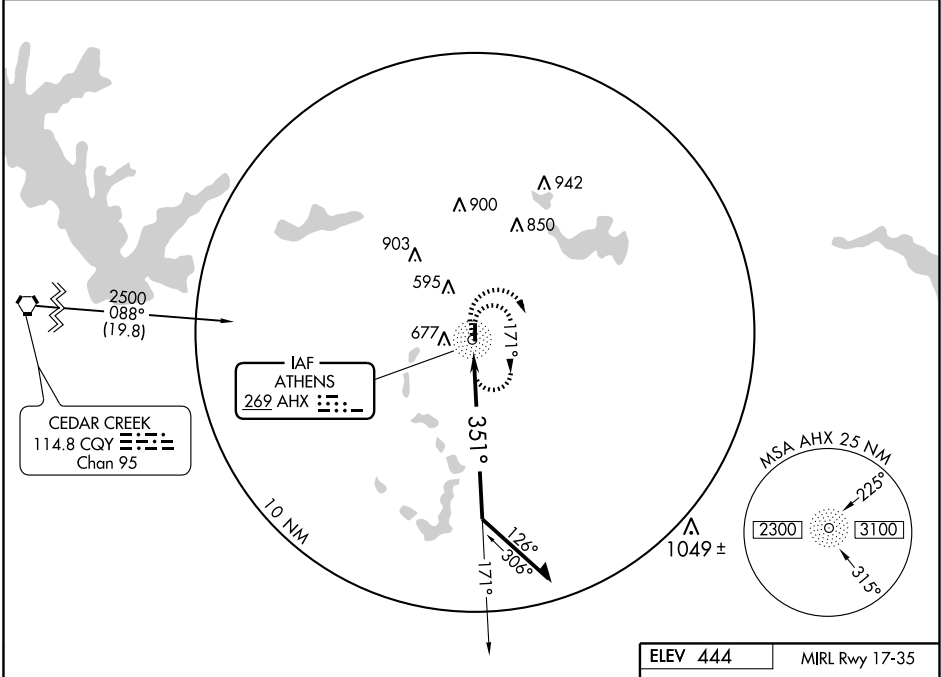
NDB AHX 269	APP CRS 351°	Rwy Idg TDZE Apt Elev	3988 444 444
-----------------------	------------------------	-----------------------------	---

▲ NA Use Tyler Pounds altimeter setting. If not received, use East Texas Rgnl altimeter setting. When neither received, procedure not authorized.

MISSED APPROACH: Climbing right turn to 2500 in AHX NDB holding pattern.

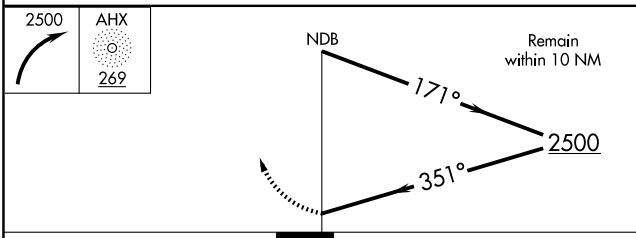
FORT WORTH CENTER
135.25 265.1

UNICOM
123.0 (CTAF)



SC-2, 03 JUL 2008 to 31 JUL 2008

SC-2, 03 JUL 2008 to 31 JUL 2008



CATEGORY	A	B	C	D
S-35	1140-1	696 (700-1)	1140-2 696 (700-2)	NA
CIRCLING	1140-1	696 (700-1)	1140-2 696 (700-2)	NA
EAST TEXAS RGNL ALTIMETER SETTING MINIMUMS				
S-35	1200-1 756 (800-1)	1200-1¼ 756 (800-1¼)	1200-2¼ 756 (800-2¼)	NA
CIRCLING	1200-1 756 (800-1)	1200-1¼ 756 (800-1¼)	1200-2¼ 756 (800-2¼)	NA

ELEV 444 **MIRL Rwy 17-35**

Knots	60	90	120	150	180
Min:Sec					