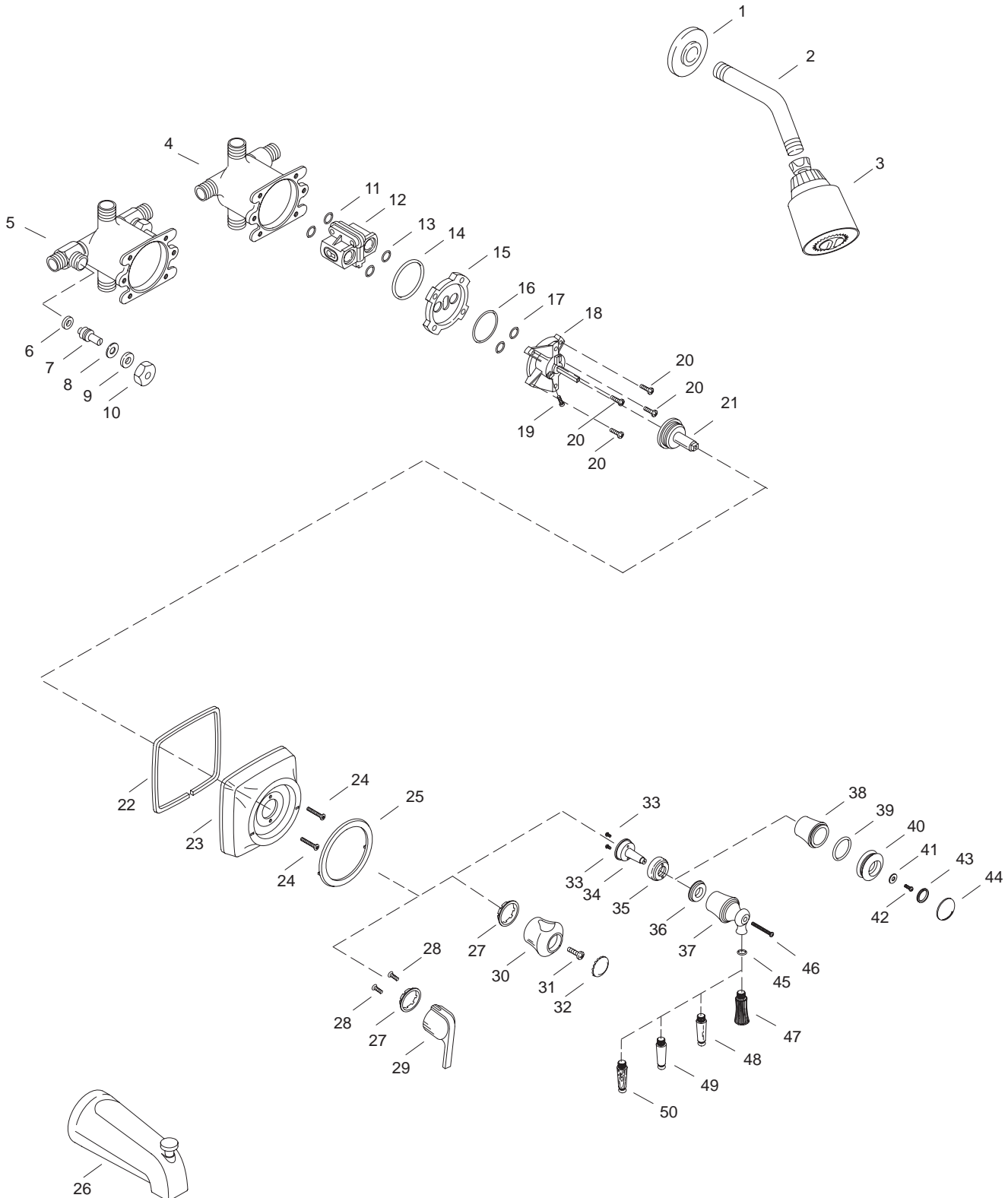


K#	Bath/Shower Faucet	Shower Faucet	Valve Only	IPS Spout Diverter	Slip-Fit Spout Diverter	Acrylic Handle	Lever Handle	Decorator Series	Screw Stops
K-15102-**-DC	X			X		X			
K-15102-S-**-DC	X				X	X			
K-15104-**-DC	X			X		X			X
K-15104-S-**-DC	X				X	X			X
K-15106-**-DC	X			X			X		
K-15106-S-**-DC	X				X		X		
K-15108-**-DC	X			X			X		X
K-15108-S-**-DC	X				X		X		X
K-15111-**-DB		X				X			
K-15113-**-DB		X				X			X
K-15115-**-DB		X					X		
K-15117-**-DB		X					X		X
K-15123-**-BB			X			X			
K-15125-**-BB			X			X			X
K-15127-**-BB			X				X		
K-15129-**-BB			X				X		X
K-15874-K-**-BB	X			X				X	
K-15875-K-**-BB	X				X			X	
K-15876-K-**-BB		X						X	
K-15877-K-**-AB			X					X	
K-15868-**-AA	X			X				X	X
K-15869-**-AA	X				X			X	X
K-15878-**-AA		X						X	X
K-15879-**-AA			X					X	X

Decorative Series – Faceplate/Handle								
K#	Lever Handle	Stacked Handle	Acrylic Insert	White Porcelain Insert	Wood Insert	Polished Brass Insert	Polished Chrome Insert	
K-15852-4R-**-AA	X		X					
K-15852-4P-**-AA	X			X				
K-15852-4S-**-AA	X				X			
K-15852-4M-**-AA	X						X	
K-15852-4N-**-AA	X					X		
K-15852-7M-**-AA		X					X	
K-15852-7N-**-AA		X				X		

** Variation and/or finish/color code may be required when ordering.



** Variation and/or finish/color code may be required when ordering.

SERVICE PARTS

ITEM	PART NO.	DESCRIPTION
1	20429**	Flange, Shower Arm
2	51410**	Shower Arm
3	73670**	Shower Head Assembly
4	71916	Body, Valve, w/o Stop Bodies
5	71917	Body, Valve, w/ Stop Bodies
6	20961	Washer, .185 x .505
7	40287	Stem, Stop
8	40291	Washer
9	40288	Packing
10	40289	Pack Nut
11	52480	O-Ring
12		Available in Service Kit Only
13	52479	O-Ring
14	42043	O-Ring
15	71922	Adapter
16	71940	O-Ring
17	33993	O-Ring
18		Available in Service Kit Only
19	71967	Screw, .190-32 UNF-2A x .750
20	71923	Screw, .190-32 UNC-2A x .625
21	71906	Stem Adapter
22	71813	Gasket Escutcheon OD
23	71949**	Escutcheon Mixer
24	71946	Screw, Phillips Oval Head
25	71911	Face Plate, Mixer
26	73666**	Spout, IPS Diverter Bath
	73668**	Spout, Slip Diverter Bath
27	71951	Thrust Washer
28	71018	Screw, .190-24 UNC x .375
29	71947**	Handle Lever
30	71908	Mixer Handle, Acrylic
31	70047	Screw, #10-16 Self Tapping
32	71909	Mixer Plug Button Marked
33	51966	Screw, .190-24 UNC-2A
34	71906	Stem Adapter
35	71974	Cover
36	71975	Gasket, Alignment
37	71973	Handle, Lever Mixer
38	71980	Handle Skirt, Mixer
39	48694	O-Ring
40	71981	Handle Insert, Mixer
41	50567	Washer, Brass
42	70047	Screw, #10
43	58486	Quad Ring
44	70623	Handle Cap, Mixer
45	56249	Screw
46	33993	O-Ring
47		Available in Service Kit Only
48		Available in Service Kit Only
49		Available in Service Kit Only
50		Available in Service Kit Only

SERVICE KITS

PART NO.	ITEM	QTY.	DESCRIPTION
500520			Pressure Balancing Body
	11	2 ea.	O-Ring
	12	1 ea.	Body Subassembly
	13	2 ea.	O-Ring
71969			Valve, Mixer Kit
	16	1 ea.	O-Ring
	17	2 ea.	O-Ring
	18	1 ea.	Mixing Valve Cartridge
	19	1 ea.	Screw, .190-32 UNF-2A x .750
30316			Repair Kit, Acrylic Handle
	27	1 ea.	Thrust Washer
	30	1 ea.	Mixer Handle, Acrylic
	31	1 ea.	Screw, #10-16 Self Tapping
	32	1 ea.	Mixer Plug Button Marked
71904**			Lever Handle Kit
	27	1 ea.	Thrust Washer
	28	2 ea.	Screw, .190-24 UNC x .375
	29	1 ea.	Handle Lever Assembly
70592**			Insert, Acrylic Subassembly
	46	1 ea.	O-Ring
	47	1 ea.	Insert, Handle, Acrylic
70593**			Insert, Brass Subassembly
	46	1 ea.	O-Ring
	48	1 ea.	Insert, Handle, Brass
70591**			Insert, Ceramic Subassembly
	46	1 ea.	O-Ring
	49	1 ea.	Insert, Handle, Ceramic
70594**			Insert, Wood Subassembly
	46	1 ea.	O-Ring
	50	1 ea.	Insert, Handle, Wood

** Variation and/or finish/color code may be required when ordering.

** Variation and/or finish/color code may be required when ordering.