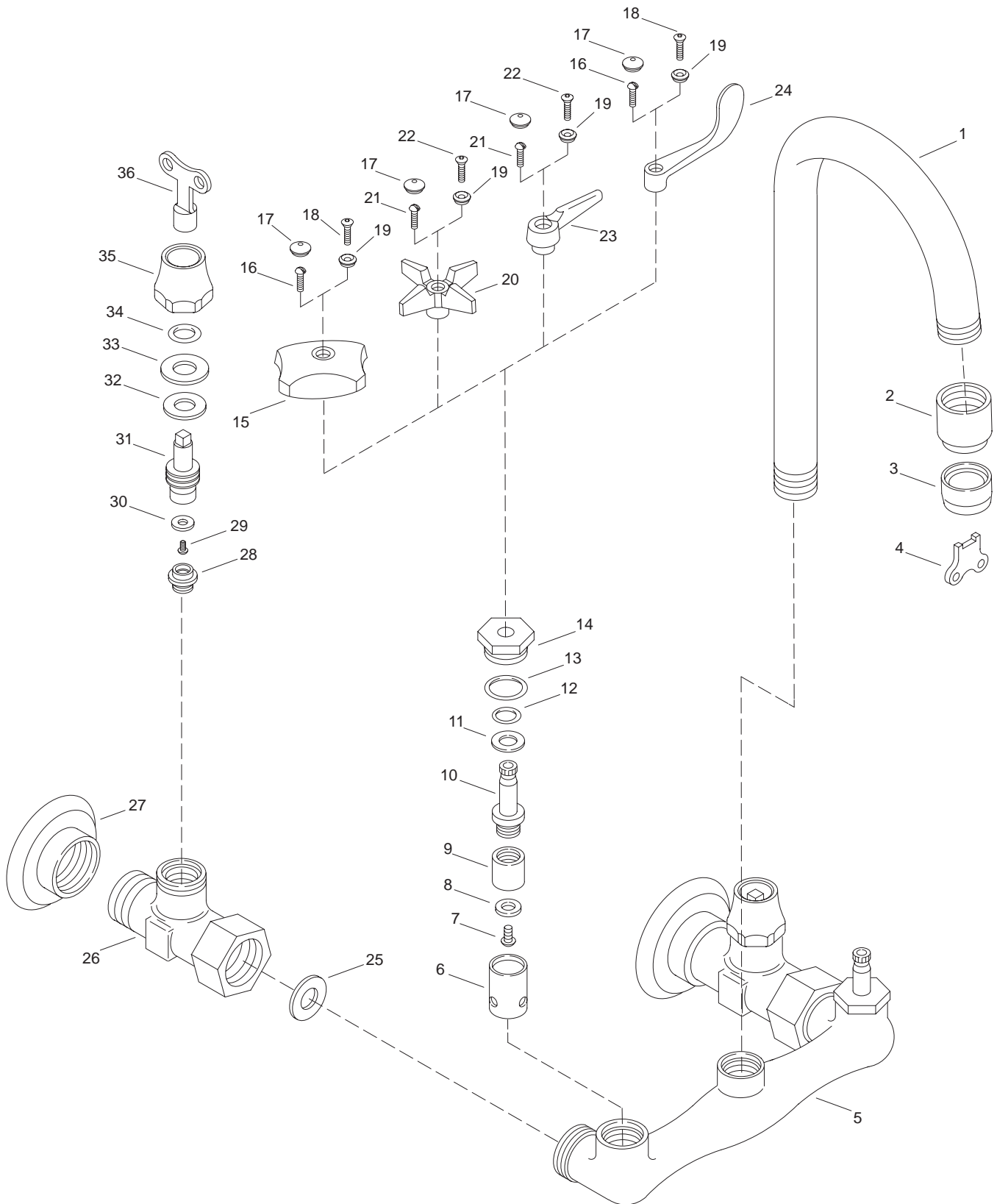


# KOHLER® SERVICE PARTS

TRITON™ SINK FAUCET  
7308-2A-\*\*-AA, 7308-3A-\*\*-AA, 7308-4A-\*\*-AA,  
7308-5A-\*\*-AA, 7308-2E-\*\*-AA, 7308-3E-\*\*-AA,  
7308-4E-\*\*-AA, 7308-5E-\*\*-AA



Variation and/or finish/color code may be required when ordering.

### SERVICE PARTS

ITEM	PART NO.	DESCRIPTION
1	35728	Gooseneck Spout
2	33968	Adapter
3	37725	Aerator
	41060	Aerator, VP
4	21999	Wrench, VP
5	34513	Body
6	24822	Seat And Sleeve Assembly
7	34848	Screw
8	20961	Washer
9	34844	Plunger, R.H.
	34862	Plunger, L.H.
10	34319	Valve Stem (Counterclockwise Close)
	34320	Valve Stem (Clockwise Close)
11	34265	Washer
12	34263	O-Ring
13	34264	O-Ring
14	34365	Bonnet
15	52643	Handle, Standard, Small
16	56074	Screw, 0.164-32 UNC x 0.31
17	52622	Button Cap
18	58891-S	Screw, 8-32 x 0.51 SHOS
19	52623-C	Button Cap, Blue
	52623-H	Button Cap, Red
20	52635	Handle, 4-Arm
21	31490	Screw, 0.164-32 UNC x 0.50
22	58892	Screw, 8-32 x 0.67 SHOS
23	52631	Lever Handle
24	53339	4" Blade Handle
25	40718	Washer
26		Available In Service Kit Only
27	39708	Flange
28	40602	Renewable Stop
29	31490	Screw
30	20961	Washer
31	32252	Valve Stem
32	39540	Washer, Brass
33	39896	Packing, Valve Stem
34	34117	O-Ring
35	32486	Nut, Packing
36	32338	Key, Loose

### SERVICE KITS

PART NO.	ITEM	QTY.	DESCRIPTION
39213			Stop Assembly
	26	1 ea.	Body Assembly
	27	1 ea.	Flange
	28	1 ea.	Renewable Stop
	29	1 ea.	Screw
	30	1 ea.	Washer
	31	1 ea.	Valve Stem
	32	1 ea.	Washer, Brass
	33	1 ea.	Packing, Valve Stem
	34	1 ea.	O-Ring
	35	1 ea.	Nut, Packing

Variation and/or finish/color code may be required when ordering.