

IBC 2021
WFCM
ECC 2021
NEC 2020
40 MPH WIND SPEED
EXPOSURE B
DESIGN MEETS THE PRESCRIPTIVE
ENERGY CODE REQUIREMENTS
CLIMATE ZONE: 2
MANUAL J CALCULATIONS BY OTHERS

BUILDING IS NOT LOCATED IN A
WINDBORNE DEBRIS PROTECTION REGION

**THERMAL COMPONENT CRITERIA
(U-FACTOR AND R-VALUE)**
(MAX. SHGC = 0.25 FOR GLAZING)

MAXIMUM GLAZING PENETRATION U-FACTOR 0.40	MIN INSULATION R-VALUE		
	CLGS.	WALLS	FLOORS
	R-30	R-5	R-5

R-8 DUCT INSULATION
ATTIC ACCESS INSULATED
INSULATE HOT & COLD WATERLINE IN UNCONDITIONED ATTIC AND CRAWSPACES.
FLOOR OUT 2x RAFTERS AS REQUIRED FOR BATT INSULATION AT CATHEDRAL CEILING OR USE SPRAYED FOAM INSULATION IF ACCEPTABLE.

- NOTES**
- CONTRACTOR SHALL SELECT WINDOW & DOOR PRODUCTS MEETING THE ENERGY EFFICIENCY REQUIREMENTS OF THE BUILDING CODE
 - CONTRACTOR SHALL SELECT WINDOW & DOOR PRODUCTS MEETING WIND DESIGN PRESSURE REQUIREMENTS OF IBC 1609
 - SAFETY GLAZING (TEMPERED GLASS) IS REQUIRED AT LOCATIONS IDENTIFIED IN EC 2406
 - PROVIDE CODE COMPLIANT HAND RAIL AT PORCH AND STAIRS.
 - OPENING IN THE BUSINESS SHALL BE PROTECTED BY 45 MIN. RATED DOORS.

WINDOW SCHEDULE

MARK	DESCRIPTION	HDR
AA	5060 VINYL FIXED TEMPERED GLASS	7'-8"

DOOR SCHEDULE

MARK	WIDTH	HEIGHT	THICK	DESCRIPTION
1	3'-0"	6'-8"	1 3/4"	SEE ELEVATION
2	3'-0"	6'-8"	1 3/8"	RAISED PANEL INTERIOR
3	2'-4"	6'-8"	1 3/8"	RAISED PANEL INTERIOR
4	3'-0"	6'-8"	1 3/4"	RAISED PANEL EXTERIOR

FLOOR PLAN

PLANS FOR:
FAYARD CONSTRUCTION
1796 GAUSE BLVD. WEST
ST. TAMMANY PARISH, LA

HOUSE PLANS by
DesignTech
OF LOUISIANA, LLC
St. Tammany Parish, LA.
SLIDELL 985-847-0600

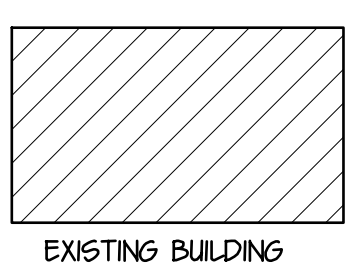
CODE	LIVING	AREA U. B.	INDEX
0	2460	3121	1375

DESIGNED BY	FINISHED BY	CHECKED BY	SHEET SIZE
DMH	JMC	~	24" X 36"

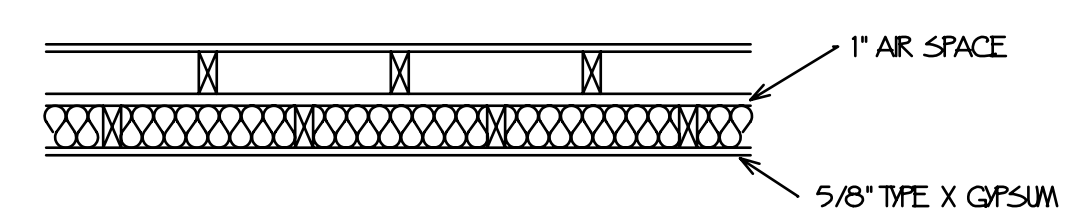
Copyright © 2025 an unpublished work by DesignTech of LA, LLC
ALL RIGHTS RESERVED.
EMAIL: houseplans@designtechusa.com

FLOOR PLAN
SCALE 1/4"=1'-0"

JOB VERIFY ALL DIMENSIONS



USE DESIGN # U382 FOR 1 HOUR FIREWALL BETWEEN UNITS.
ONE LAYER 5/8" TYPE X GYPSUM WALL BOARD APPLIED TO EACH SIDE OF DOUBLE ROW OF 2x4 WOOD STUDS 16" O.C. ON SEPARATE PLATES 1 INCH APART. USE 6d COATED NAILS 24" O.C. FOR BASE LAYER AND 8d COATED NAILS FOR FACE LAYER. 3 1/2" FIBERGLASS INSULATION IN CAVITY. STAGGER JOINTS 16" O.C. EACH LAYER AND SIDE. GWB FIRE STOP CONTINUOUS IN SPACE BETWEEN PLATES. OPTIONAL SOUND BD. BETWEEN WALLS. EXTEND RATED WALL TO UNDERSIDE OF RAFTERS AND SEAL TIGHT TO ROOF.



SECTION @ U382 DESIGNED 1 HR. FIRE WALL
SCALE 3/4"=1'-0"

AREA

REMODELED AREA UNIT # 1	1208
REMODELED AREA UNIT # 2	1252
TOTAL A/C & HEATED AREA	2460
PORCHES	661
TOTAL AREA UNDER B'M	3121

Although every effort has been made in preparing these plans, the contractor must check all details for accuracy or errors and be responsible for same. Purchaser assumes the risk of any errors, omissions or mistakes during construction due to the fact that DesignTech does not perform field supervision nor select building materials sub-contractors and/or products/equipment. All notes, specifications and other information on the plans are included as instructed by and/or with the approval of Purchaser and without warranty of any kind whatsoever. PLANS HAVE BEEN PREPARED FOR USE BY KNOWLEDGEABLE AND EXPERIENCED LICENSED CONTRACTORS.
This drawing contains valuable, confidential, proprietary, trade secret information of DesignTech Residential Planners, Inc. No reproduction or other use of the drawing or any of its contents is permitted without consent of DesignTech Residential Planners, Inc.