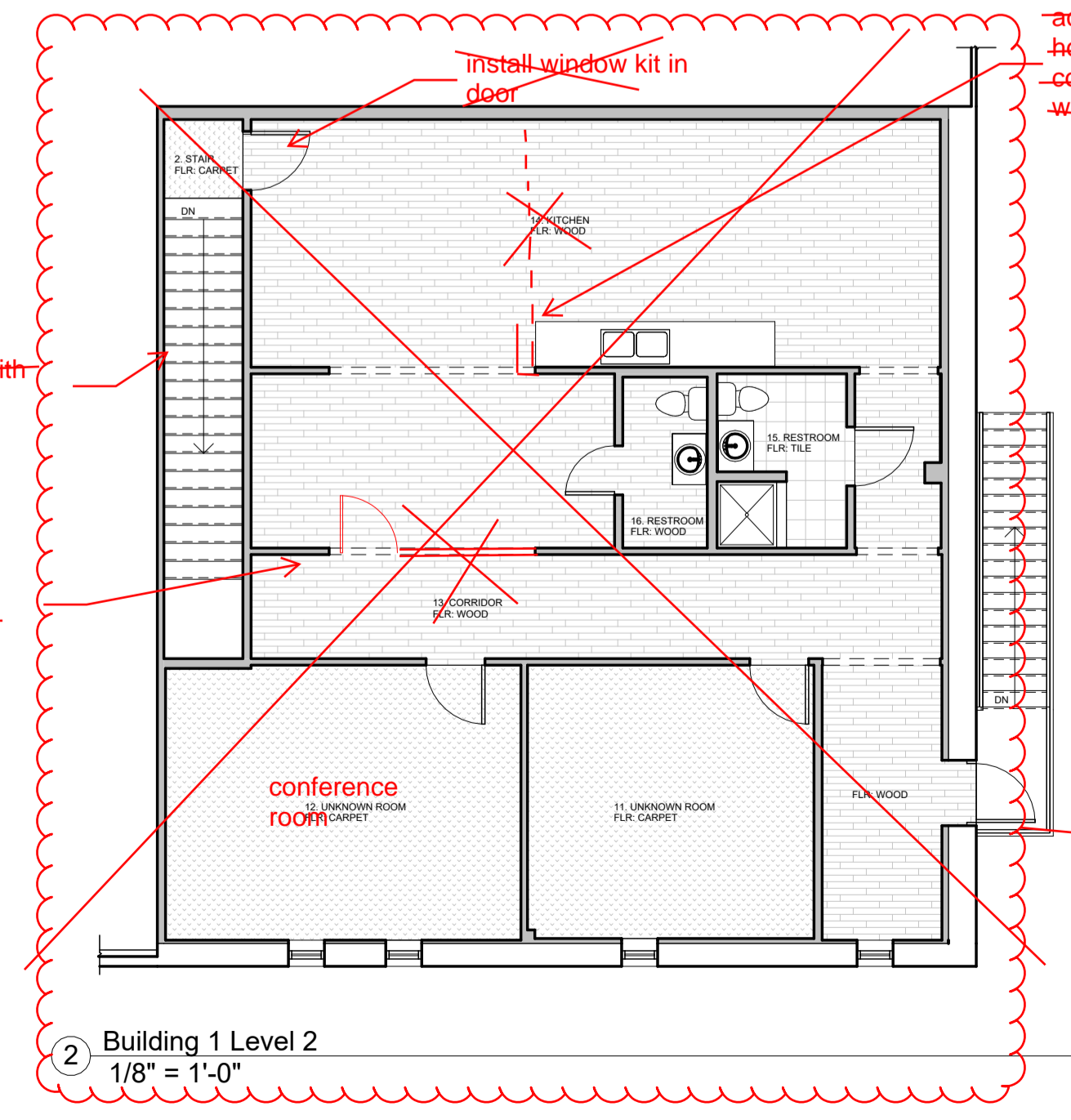


1 Building 1 Level 1
1/8" = 1'-0"



2 Building 1 Level 2
1/8" = 1'-0"

- Floors to be polished concrete throughout downstairs office area. Except for Two office bathrooms to be LVP (refer to Sunbelt Spec Book).
- Walls painted Alabaster White (eggshell).
- Trim and doors painted Web Gray (semi-gloss).
- Bathrooms to have wall mounted sinks, ADA grab bars, FRP from floor up 4', paint walls above FRP alabaster white, clean fixtures.
- Build out 3 new offices
- install kiosks and break room millwork (provided by Sunbelt)
- Install electrical and data receptacles in new walls. TBD on site at least one electrical per new wall and at least one data receptacle in each office.
- Install electrical for Big Ass Fan (location and needed supply TBD from BAF plan)
- Replace existing fluorescent fixtures with low profile LEDs 35 candle ft in office 50 candle ft in warehouses.
- Install 2x3 windows in two office walls.
- Install 2" conduit in floor for electric and data to kiosks.
- Install window kit or door with window going from showroom to warehouse
- Install electrical and automatic door openers all warehouse roll up doors. Total of 4
- Install concrete in 6" bollards with bollard covers (safety yellow) at all roll up doors and to protect HVAC units at last man door by fence. (two on inside of dock door)
- Paint exterior walls Dorian gray, Paint all doors and trim Web Gray. Do not paint brick (Sto Paint, refer to spec book)
- Clean and Paint bathroom only
- dryer receptacle needs to relocate with Humble