



Sophisticated furnishings combine with a bay window to grant a formal appearance to the breakfast room.



The large garden tub, dual vanities and separate shower provide convenience and luxury in the master bath.



The
Hickory Ridge

Donald A. Gardner Architects, Inc.
Hickory Ridge
© 2001 Donald A. Gardner, Inc.

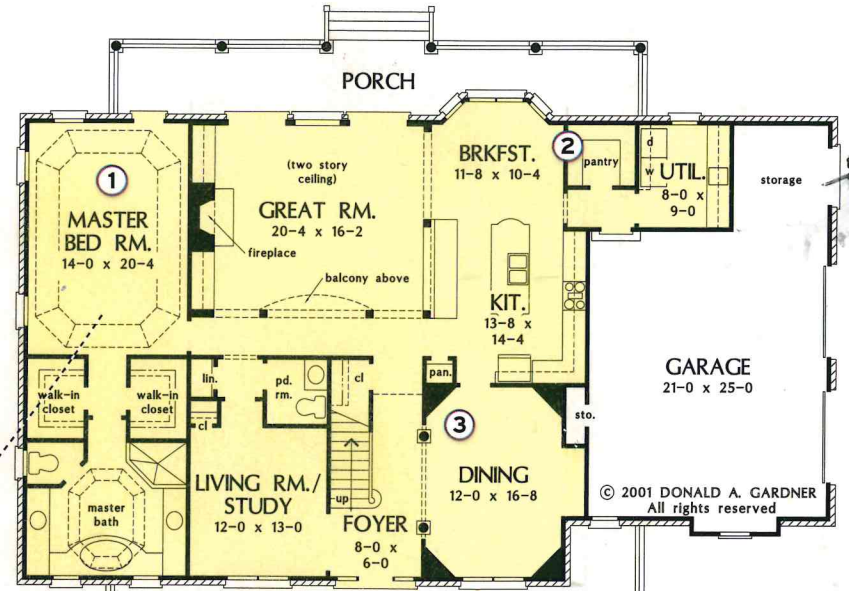
PLAN NUMBER: DDHDG47-916
BEDROOMS: 4
BATHS: 3½
WIDTH: 71'11"
DEPTH: 54'4"
1ST FLOOR: 2194 sq ft
2ND FLOOR: 973 sq ft
LIVING AREA: 3167 sq ft
BONUS ROOM: 281 sq ft
FOUNDATION: Crawl Space
Other options available. See page 190.

PRICES

1 SET: \$960
5 SETS: \$1045
8 SETS: \$1105
VELLUM or PDF: \$1430
CAD: \$2620

TOP 5 DESIGN FEATURES:

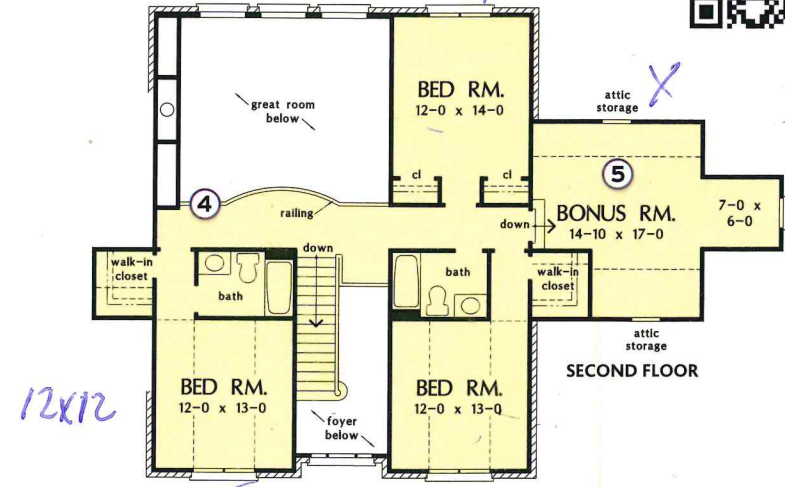
- ① Tray ceilings in the master suite add elegance.
- ② A large pantry off the kitchen provides ample storage space.
- ③ Angled corners and columns add impressive detail in the dining room.
- ④ A beautiful curved balcony overlooks the two-story great room.
- ⑤ The bonus room offers flexible space for families.



14x20

add

© 2001 DONALD A. GARDNER
All rights reserved



12x12

Photographed home may have been modified from the original construction documents.

TO ORDER CALL: 1-888-779-0686



REAR ELEVATION

P
1
2
3
4
5

An elegant tray ceiling tops the master bedroom, while light-colored walls and hardwood floors grant a relaxing environment.

