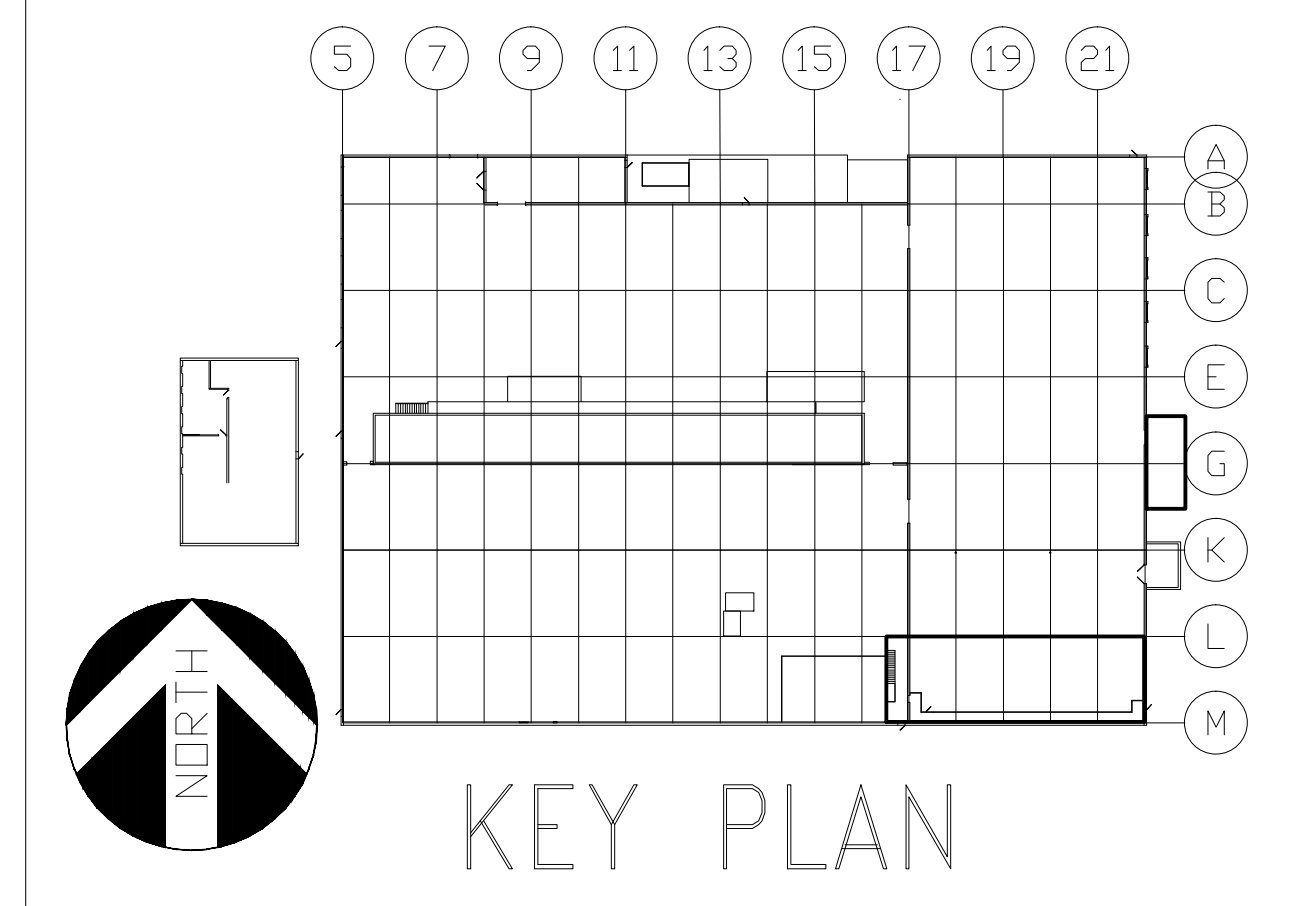
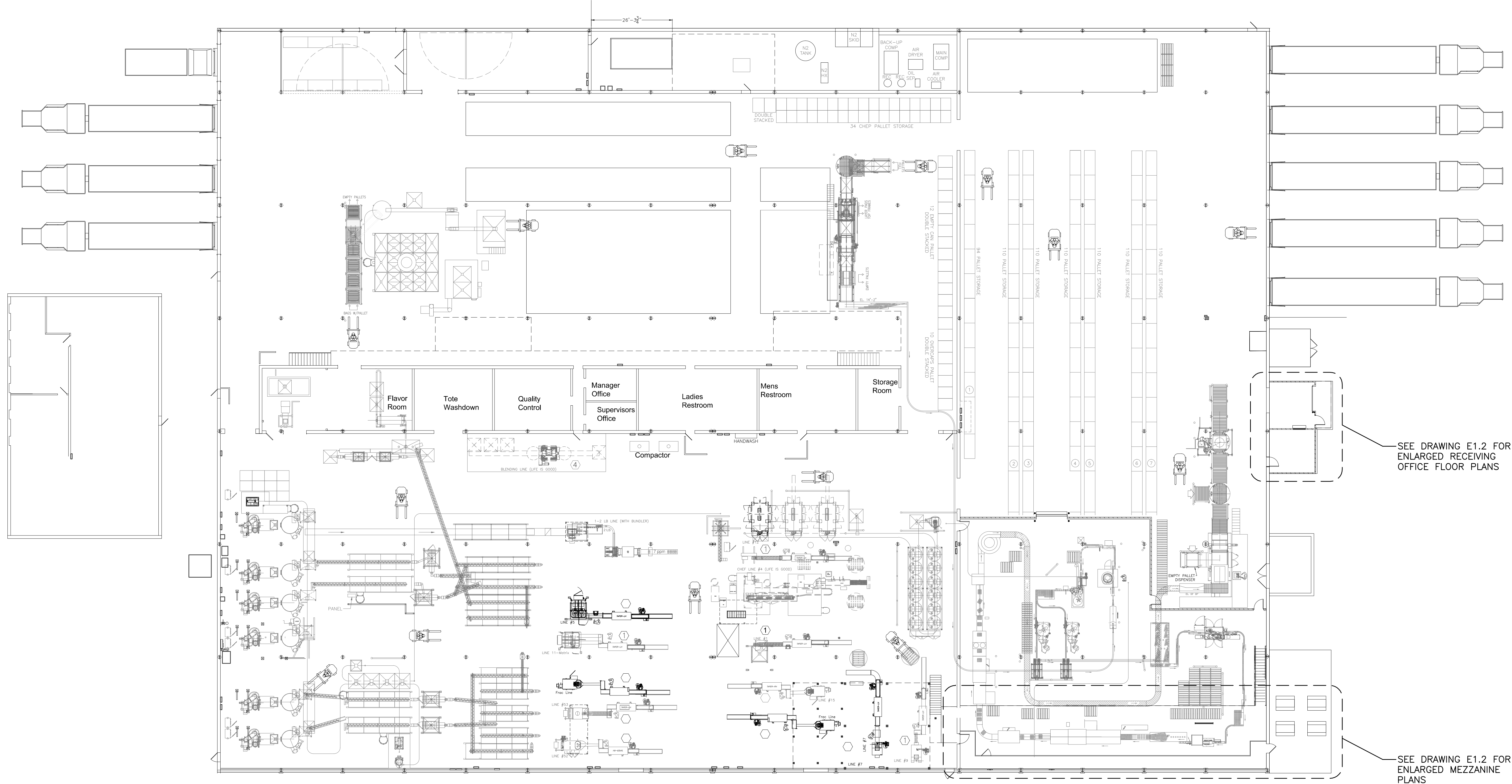


-NO



GENERAL NOTES

- THE ELECTRICAL DRAWINGS FURNISHED BY DESIGN GROUP FACILITY SOLUTIONS, LLC ARE FOR POWER DESIGN ONLY. PROCESS DESIGN AND INSTALLATION ARE PROVIDED BY OTHERS. THIS ELECTRICAL CONTRACTOR SHALL COORDINATE WITH OWNER AND OWNER'S VENDORS/CONTRACTORS AS REQUIRED.
- FOLLOW ALL APPLICABLE CODES AND USE GOOD INDUSTRIAL PRACTICES AND STANDARDS WHEN DETERMINING CONDUIT TYPES AND SIZES, TO INCLUDE SPARE CAPACITY. INSTALL WIRING IN CONDUITS AS FOLLOWS UNLESS NOT ALLOWED BY LOCAL ORDINANCE:
 - UNDERGROUND: PVC RIGID NON-METALLIC CONDUIT (RNC) AND TRANSITION TO RIGID GALVANIZED STEEL CONDUIT (RMC) BEFORE PENETRATING SLAB INTO ROOM. SEAL ALL CONDUITS FOR WATERTIGHT/AIRTIGHT PROTECTION. WHERE CONDUIT ENTERS THE BUILDING, UTILIZE SEALING FITTINGS WITH MOISTURE RESISTANT FIRE STOP PUTTY.
 - UNDER SLAB CONDUIT WITHIN THE BUILDING IS NOT PERMITTED UNLESS SPECIFICALLY IDENTIFIED ON THE CONTRACT DRAWINGS.
 - EXPOSED OUTDOORS: RIGID GALVANIZED STEEL CONDUIT (RMC) AND PROVIDE EXPANSION FITTINGS WHERE REQUIRED.
 - OFFICE AREAS: METAL CLAD (MC) CABLE CONCEALED IN WALLS AND ABOVE CEILINGS; HOMERUNS SHALL BE IN ELECTRICAL METALLIC TUBING (EMT). WIRING THAT CANNOT BE CONCEALED SHALL BE ROUTED EXPOSED IN EMT.
 - ALL REMAINING INDUSTRIAL AREAS: ELECTRICAL METALLIC TUBING (EMT) WITH COMPRESSION FITTINGS.
 - CONTACT THE ENGINEER FOR ANY AREAS IN QUESTION PRIOR TO BID.
- ELECTRICAL CONTRACTOR SHALL COORDINATE WITH GENERAL CONTRACTOR ALL SLEEVES AND PENETRATIONS REQUIRED THROUGH FOUNDATION WALLS AND CONCRETE FLOORS FOR SERVICE ENTRANCE WIRING AND STRUCTURE GROUNDING ELECTRODE CONDUCTORS.
- GALVANIZED RIGID STEEL SLEEVES SHALL BE PROVIDED FOR ALL CONDUITS PASSING THROUGH FLOORS AND WALLS. THE SLEEVES SHALL EXTEND 2-INCHES PAST THE WALL SURFACE ON BOTH SIDES AND BE 1/4" LARGER THAN THE CONDUIT PASSING THROUGH THE SLEEVE.
- MINIMUM CONDUIT SIZE SHALL BE 3/4" CONDUIT IN ALL AREAS.
- MINIMUM WIRE SIZE SHALL BE #12 AWG COPPER UNLESS NOTED OTHERWISE REFER TO SPECIFICATIONS 16050 FOR CONDUCTOR INSULATION RATINGS.
- PROVIDE AN INSULATED GROUND WIRE IN ALL CONDUIT, CABLEING AND TUBING.
- ALL CIRCUITS SHALL BE CONNECTED TO A 20A CIRCUIT BREAKER IN THE PANEL DESIGNATED ON PLAN, UNLESS OTHERWISE INDICATED.
- PROVIDE #10 AWG. FOR 120V HOMERUNS EXCEEDING 55'-0" IN LENGTH, #8 AWG. FOR 120V HOMERUNS EXCEEDING 90'-0" IN LENGTH, #6 AWG. FOR 120V HOMERUNS EXCEEDING 140'-0" IN LENGTH AND #4 AWG. FOR 120V HOMERUNS EXCEEDING 230'-0" IN LENGTH.
- MOUNT RECEPTACLES AT +46" ABOVE FINISH FLOOR THROUGHOUT THE INDUSTRIAL AREAS AND AT +18" ABOVE FINISH FLOOR IN THE OFFICE AREAS.
- RECEPTACLE OUTLETS INDICATED BACK TO BACK ON RECESSED WALLS SHALL BE LOCATED OFFSET, IN SEPARATE STUD BAYS, WHERE POSSIBLE, TO MINIMIZE SOUND TRANSMISSION.
- VERIFY EXACT LOCATION OF FLOOR BOXES, RECEPTACLES AND TELEPHONE/DATA OUTLETS WITH FURNITURE LAYOUTS PRIOR TO INSTALLATION.
- WHERE RACEWAYS ARE ROUTED EXPOSED, VERTICALLY IN INDUSTRIAL AREAS, THEY SHALL BE ROUTED WITHIN THE WEB OF A COLUMN OR ADJACENT TO A COLUMN ON A WALL, WHEREVER POSSIBLE, TO PROTECT FROM DAMAGE.
- THERE SHALL NOT BE ANY CONDUITS INSTALLED HORIZONTALLY BELOW THE CEILING OR BAR JOIST SPACE AS BEST AS PRACTICAL. ALL EQUIPMENT AND DEVICES SHALL BE FED WITH VERTICAL CONDUIT DROPS FROM THE CEILING OR BAR JOIST LEVEL.
- WHERE MECHANICAL OR OTHER EQUIPMENT CONNECTIONS ARE SHOWN WITHOUT LOCAL DISCONNECT SWITCH SHALL MEAN THAT IT IS FURNISHED BY OTHERS OR FURNISHED WITH THE UNIT.
- WHERE A MOTOR STARTING SWITCH OR DISCONNECT IS INDICATED ADJACENT TO MECHANICAL OR OWNER EQUIPMENT, THE SWITCH SHALL BE MOUNTED ON BUILDING STEEL OR WALL. PROVIDE LIQUIDTIGHT FLEXIBLE CONDUIT FROM SWITCH TO THE UNIT. MOUNTING TO THE MECHANICAL OR OWNER EQUIPMENT WILL NOT BE ACCEPTED.
- COMBINING CURRENT-CARRYING CONDUCTORS IN ONE CONDUIT (FOR POWER WIRING ONLY):
 - DO NOT COMBINE ANY MORE THAN 9#12 OR 6#10 CURRENT-CARRYING CONDUCTORS IN THE SAME CONDUIT, UNLESS NOTED OTHERWISE.
 - PROVIDE 3/4" CONDUIT FOR THE 9#12 AND 6#10 IN THE OFFICE AREAS.
 - MORE THAN THREE CURRENT-CARRYING CONDUCTORS AND LARGER THAN #10 SHALL NOT BE COMBINED IN THE SAME CONDUIT AND SHALL HAVE DEDICATED CONDUIT ONE SIZE LARGER THAN WHAT THE CODE TABLES RECOMMEND.
 IT SHALL BE THE ELECTRICAL CONTRACTORS RESPONSIBILITY TO COMPLETE THE CALCULATIONS FOR THE ADJUSTMENT FACTOR(S) APPLIED TO THE COMBINING OF CIRCUITS.
- WHEN CONDUITS ARE EXPOSED THEY SHALL BE ROUTED AS BEST AS PRACTICAL TO BE PROTECTED FROM EQUIPMENT DAMAGE.



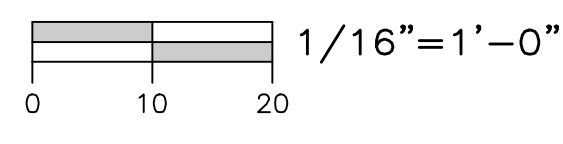
SEE DRAWING E1.2 FOR ENLARGED RECEIVING OFFICE FLOOR PLANS

SEE DRAWING E1.2 FOR ENLARGED MEZZANINE PLANS

ELECTRICAL DRAWING LIST

- E1.1 - OVERALL FLOOR PLAN ELECTRICAL
- E1.2 - ENLARGED FLOOR PLAN ELECTRICAL
- E1.3 - OVERALL FLOOR PLAN LIGHTING
- E2.1 - ENLARGED FLOOR PLAN LIGHTING
- E3.1 - ENLARGED FLOOR PLAN POWER
- E3.2 - ROOF PLAN AND DETAILS POWER
- E5.1 - ELECTRICAL ONE LINE DIAGRAM
- E5.2 - ELECTRICAL SCHEDULES
- E5.3 - ELECTRICAL SCHEDULES

OVERALL POWER PLAN



STATEMENT OF SUPERVISION
 THESE PLANS AND SPECIFICATIONS HAVE BEEN PREPARED UNDER MY SUPERVISION AND TO THE BEST OF MY KNOWLEDGE COMPLY WITH ALL LOCAL, STATE, AND FEDERAL REQUIREMENTS.

ISSUE DATE: 02/27/14

ISSUE	A	ELECTRICAL REVISIONS	GAP	03/18/14
	B	MCC LAYOUT REVISION	GAP	05/19/14
	C	ISSUED FOR PERMIT	GAP	03/20/14

DEPT. APPROVAL	DATE
PROJECT APPROVAL	DATE
CLIENT APPROVAL	DATE
RESIDENT ENGR. APPROVAL	DATE

DESIGN GROUP FACILITY SOLUTIONS
 5 CHENELL DRIVE, BOX 3, CONCORD, NEW HAMPSHIRE 03301
 PHONE: (603) 225-0010 FAX: (603) 225-0761

DRAWN BY	DATE
CHECKED BY	DATE
MATERIAL	
SCALE	1/16"=1'-0"

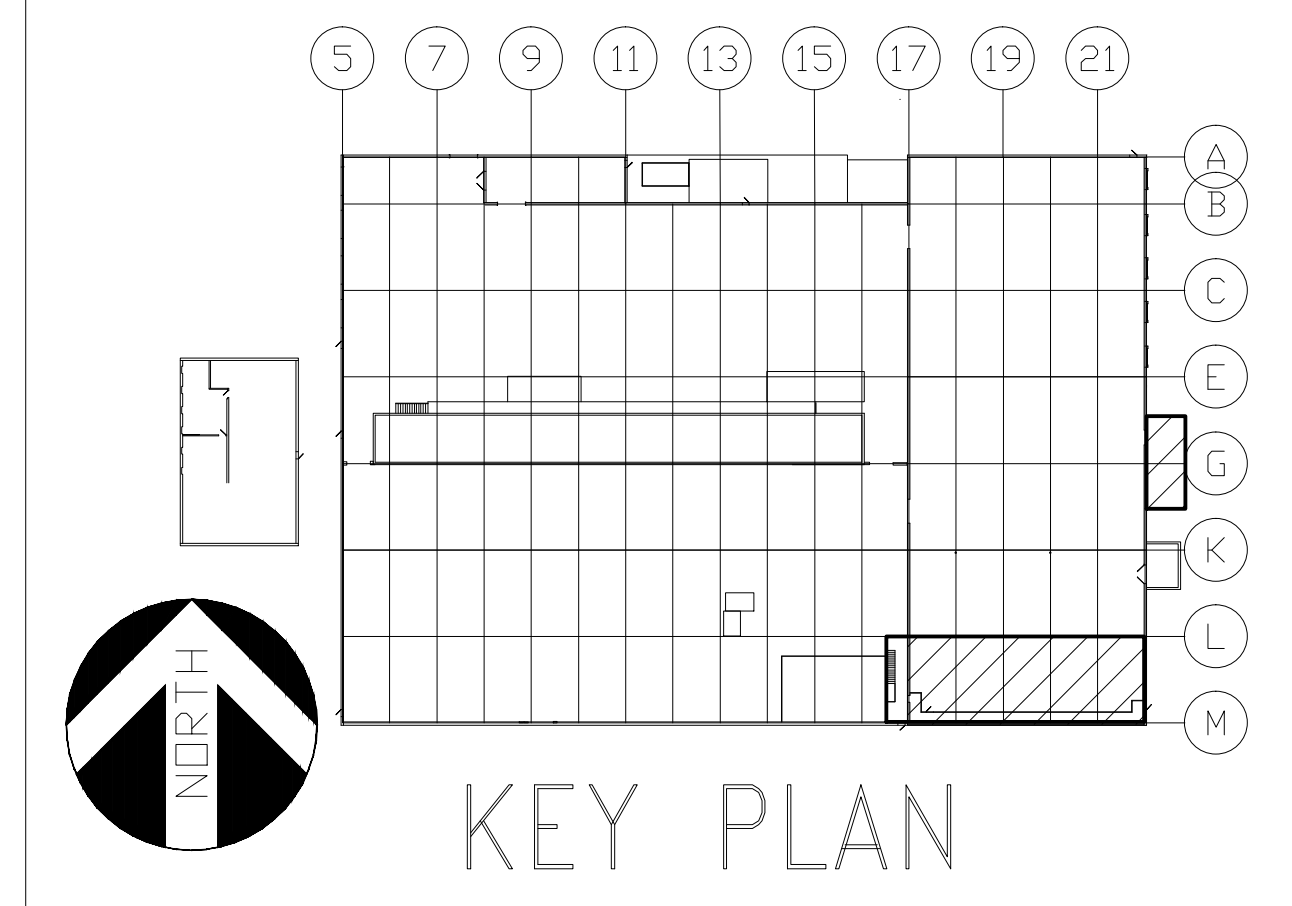
PROPERTY OF THE J.M. SMUCKER COMPANY -IMPORTANT- THIS DRAWING PRINT IS LOANED FOR MUTUAL ASSISTANCE AND SUCH IS SUBJECT TO RECALL AT ANY TIME. INFORMATION CONTAINED HEREON IS NOT TO BE DISCLOSED OR REPRODUCED FOR THE BENEFIT OF PARTIES OTHER THAN NECESSARY SUBCONTRACTORS AND SUPPLIERS WITHOUT WRITTEN CONSENT OF THE J.M. SMUCKER COMPANY.	
LEVEL	TECH
LINE NO.	PRESENTATION
EQUIP. NO.	PLANT
DWG. LIST	PROD. AREA
SUB ASSY. NO.	DESCRIPTOR
QUANTITY	BLDG. NO.

PHASE 1

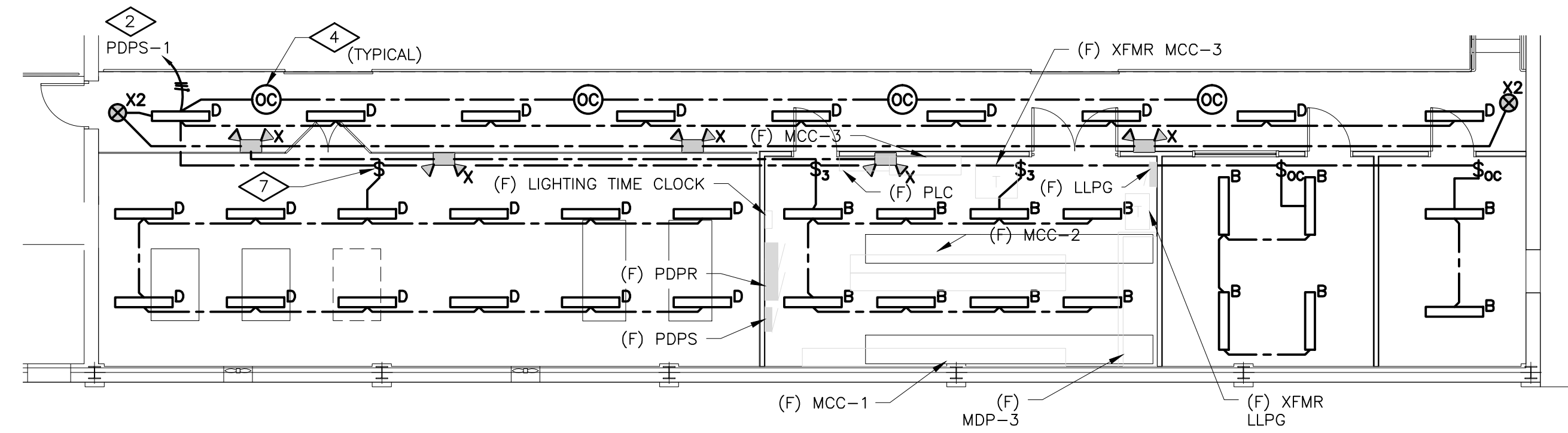
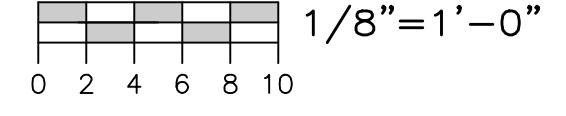
PROJECT ORANGE
 OVERALL FLOOR PLAN
 ELECTRICAL
 JMS FOODSERVICE LLC

DRAWING NUMBER
 E1.1
 SUPERSEDES

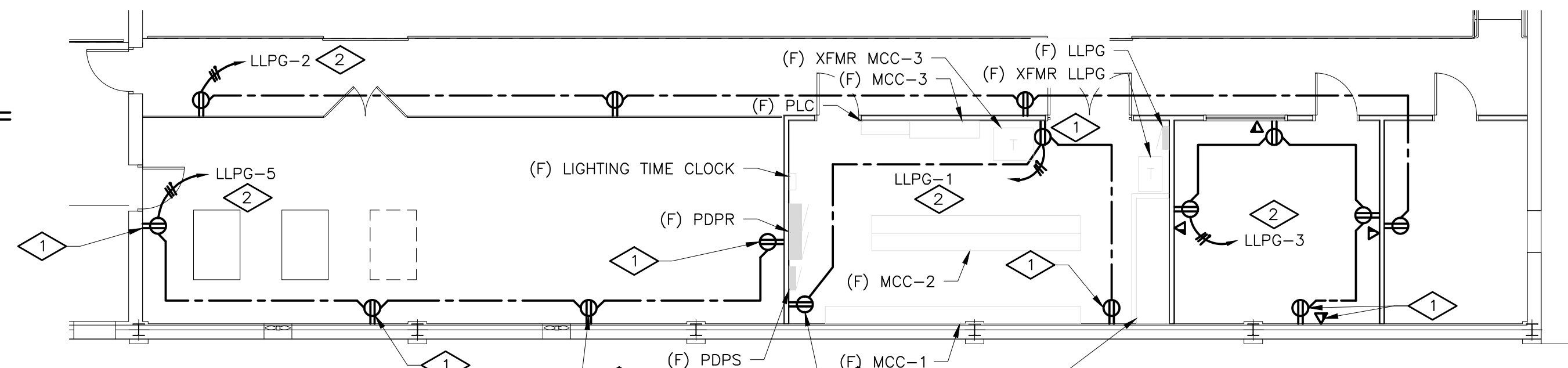
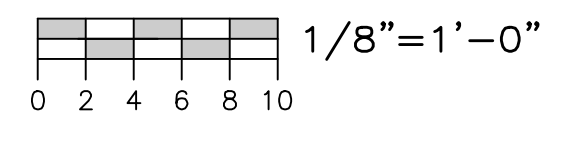
-NO



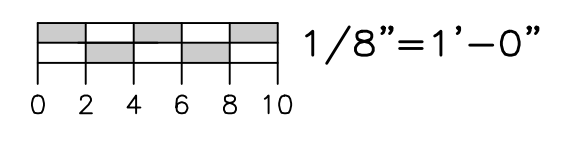
RECEIVING OFFICE LIGHTING PLAN



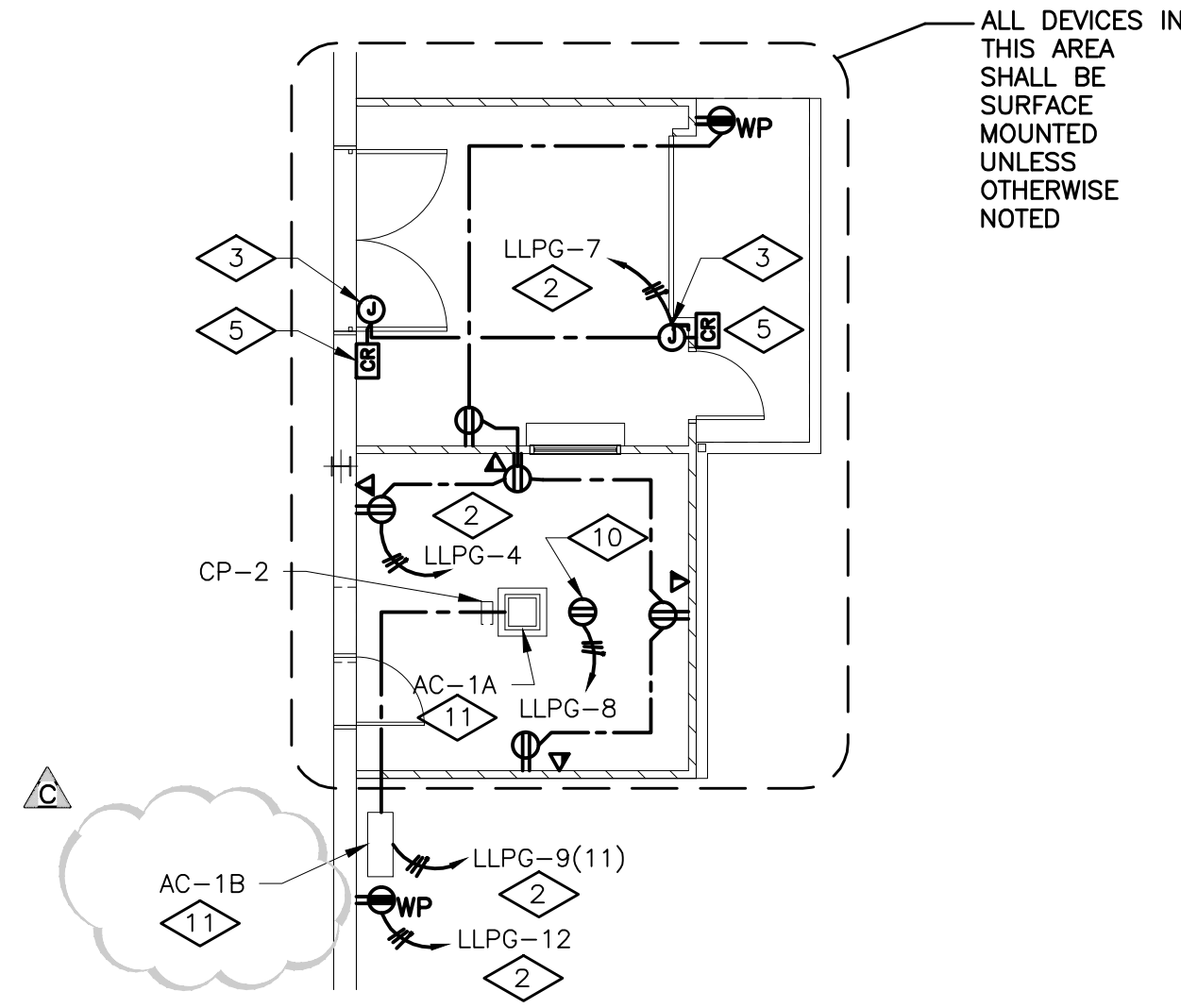
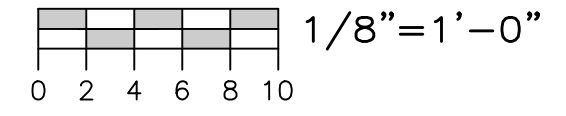
MEZZANINE LIGHTING PLAN



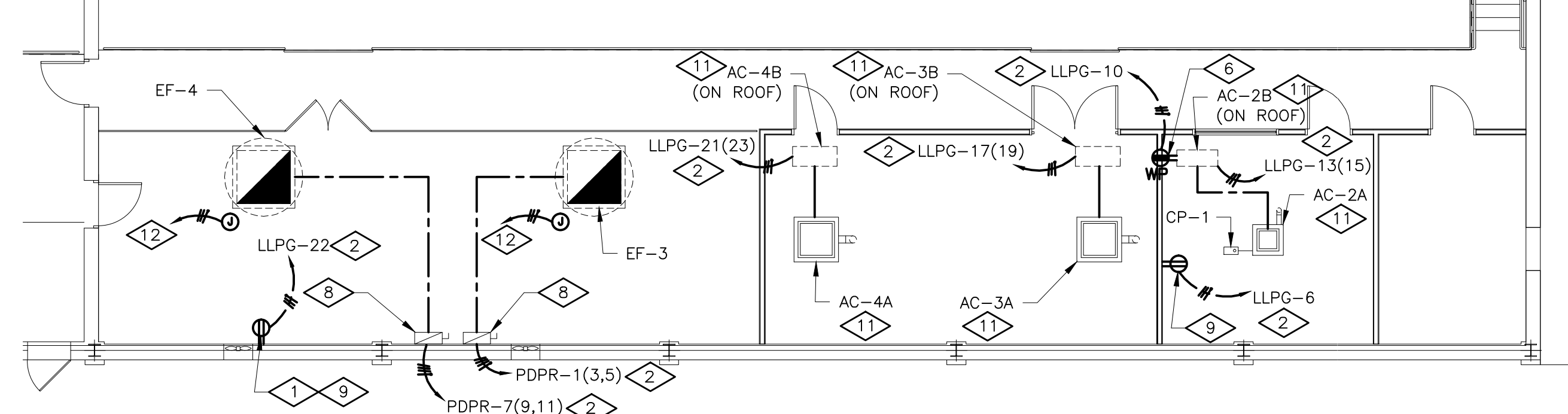
MEZZANINE POWER PLAN



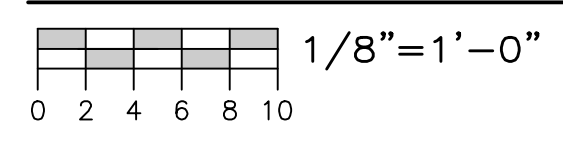
RECEIVING OFFICE POWER PLAN



ALL DEVICES IN THIS AREA SHALL BE SURFACE MOUNTED UNLESS OTHERWISE NOTED



MEZZANINE MECHANICAL POWER PLAN



ELECTRICAL LEGEND			
SYMBOL	DESCRIPTION	SYMBOL	DESCRIPTION
LIGHTING		SPECIAL SYSTEMS	
○ ^A	LETTER BY THE LUMINAIRE INDICATES LUMINAIRE TYPE AND MOUNTING	▽	COMBINATION COMPUTER/TELEPHONE OUTLET CONDUIT TO ACCESSIBLE AREA
○	CEILING LUMINAIRE OUTLET	ABBREVIATIONS	
○	WALL LUMINAIRE OUTLET	AFF, R, G	ABOVE FINISH FLOOR, ROOF, GRADE
○	CEILING FLUORESCENT LUMINAIRE	AC	ABOVE COUNTER
○	WALL FLUORESCENT LUMINAIRE	GC	GENERAL CONTRACTOR
○	FLUORESCENT STRIPLIGHT	EC	ELECTRICAL CONTRACTOR
○	ALL SHADED LUMINAIRES SHALL BE EMERGENCY OR EGRESS LIGHTING	MC	MECHANICAL CONTRACTOR
→	EXIT LIGHT (ARROW INDICATES DIRECTION AND SINGLE OR DOUBLE FACE EXIT)	RC	REFRIGERATION CONTRACTOR
○	DOUBLE HEAD EMERGENCY LIGHT UNIT	WP	WEATHERPROOF W/COVER "CLOSED" FOR RECEPTACLES; NEMA TYPE 3R FOR ENCLOSURES
○	DOUBLE HEAD REMOTE EMERGENCY LIGHT	WL	WET LOCATION W/COVER "OPEN" FOR RECEPTACLES; NEMA TYPE 4X FOR ENCLOSURES
○	SINGLE HEAD REMOTE EMERGENCY LIGHT	C, G, ϕ	CONDUIT, GROUND, PHASE
○	SINGLE POLE SWITCH (α = SWITCHING)	(N)	NEW
○	THREE WAY SWITCH	(X)	EXISTING
○	SINGLE POLE SWITCH W/ PILOT LIGHT	(RX)	REMOVE EXISTING
○	SINGLE POLE SWITCH W/ OCCUPANCY SENSOR	(RR)	REMOVE AND RELOCATE
○	THREE WAY SWITCH W/ OCCUPANCY SENSOR	(R)	RELOCATED
○	CEILING MOUNTED OCCUPANCY SENSOR	(M)	MODIFIED
○		(F)	FUTURE
○		NTS	NOT TO SCALE
POWER			
○	SINGLE RECEPTACLE		
○	DUPLEX RECEPTACLE		
○	DOUBLE DUPLEX RECEPTACLE		
○	DEDICATED RECEPTACLE		
○	GROUND FAULT RECEPTACLE		
○	ISOLATED GROUND (IG) DUPLEX RECEPTACLE		
○	PROVIDE A RED RECEPTACLE		
○	CEILING MOUNTED RECEPTACLE		
○	SPECIAL OUTLET (AS NOTED ON PLANS)		
○	DROP CORD OUTLET (AS NOTED ON PLANS)		
○	RETRACTABLE POWER CORD (AS NOTED ON PLANS)		
○	MOTOR OUTLET AND CONNECTION		
○	JUNCTION BOX		
○	SAFETY SWITCH F=FUZED B=BREAKER 30AF=FRAME SIZE, 20AT=TRIP SIZE		
○	MAGNETIC STARTER OR CONTACTOR. COIL VOLTAGE SHALL BE COORDINATED WITH OTHER TRADES, U.O.N.		
○	VFD=VARIABLE FREQUENCY DRIVE		
○	MOTOR STARTING SWITCH WITH HANDLE GUARD AND LOCKOUT CAPABILITY		
○	PULLCORD SWITCH FURNISHED BY OTHERS		
○	PUSH BUTTON STATION		
○	CONTROL PANEL FURNISHED AND INSTALLED BY OTHERS OR WITH UNIT		
○	COMBINATION STARTER		
○	CONTROL PANEL FURNISHED BY OTHERS INSTALLED BY EC.		
○	PANELBOARD, PANEL HA, HB, LA, LB. "H" INDICATES 480V OR 277/480V "L" INDICATES 120/208V		
○	TRANSFORMER		
○	SPARE CONDUIT CAPPED FOR FUTURE USE		
○	GROUND CONNECTION		
○	CIRCUIT RUN; UNDER FLOOR OR UNDERGROUND		
○	CIRCUIT RUN; CONCEALED IN WALL OR CEILING		
○	CIRCUIT RUN; EXPOSED		
○	EMERGENCY CIRCUIT, DC ONLY		
○	HOME RUN (ARROWS ARE NUMBER OF CIRCUITS)		
○	7,9,11 SINGLE POLE CIRCUITS DESIGNATION		
○	7(9) TWO POLE CIRCUIT DESIGNATION		
○	7(9,11) THREE POLE CIRCUIT DESIGNATION		

LUMINAIRE SCHEDULE						
KEY	DESCRIPTION AND FINISH	MOUNTING	MANUFACTURER	SERIES OR TYPE (NOT A COMPLETE CAT. #)	VOLT	LAMP(S)
A	SPECIFICATION PREMIUM TROFFER AIR HANDLING, 2'x4', 2 LAMP, T5, PATTERN #12 ACRYLIC LENS; ELECTRONIC BALLAST	GRID RECESSED	LITHONIA	ZSP G 2 28T5 A12 S5	277	TWO (2) 28-WATT T5 LINEAR FLUORESCENT
B	STRIP, 4' T5 ELEC WITH ACRYLIC LENS	11' AFF	LITHONIA	FV4 2 28T5 N1 X20 MVOLT GEB10PS LP841	277	TWO (2) 28-WATT T5 LINEAR FLUORESCENT
D	4' WET LOCATION ENCLOSURE WITH (2) T5 LAMPS, 50% DR HIGH IMPACT ACRYLIC LENS	10' AFF	LITHONIA	DMW 2 28T5	277	TWO (2) 28-WATT T5 LINEAR FLUORESCENT
X	PAR 36 GLASS SEALED BEAM LAMP	12' AFF	LITHONIA	INDX1254 H2012 ULT	277	HALOGEN, 20 WATT, 12 VOLT
X1	PAR 36 GLASS SEALED BEAM LAMP	12' AFF	LITHONIA	ELA W T NX H1212	12V	HALOGEN, 20 WATT, 12 VOLT
X2	EXIT SIGN	12' AFF	EMGERI-LITE	WW SVXN 2 R -D -4X -DC	277	-

LUMINAIRE KEY NOTES

- Lighting shall be NSF RATED IF THE AREA IS OPEN TO THE PRODUCTION AREA.
- LIFE SAFETY CONNECTED TO LOCAL UNSWITCHED LIGHTING CIRCUIT THAT IS INDICATED.

GENERAL NOTES

- REFER TO DRAWING E1.1 FOR ELECTRICAL DRAWING PACKAGE GENERAL NOTES.

KEY NOTES

- SURFACE MOUNTED DEVICE
- CIRCUIT CONNECTION TO FUTURE ELECTRICAL DISTRIBUTION EQUIPMENT. PROVIDE PROVISION FOR CONNECTION TO FUTURE ELECTRICAL DISTRIBUTION EQUIPMENT LOCATED IN ELECTRICAL ROOM ON MEZZANINE. SEE MEZZANINE POWER PLAN FOR FUTURE ELECTRICAL DISTRIBUTION EQUIPMENT, THIS SHEET.
- JUNCTION BOX FOR CONNECTION TO DOOR ELECTRIC RE-STRIKE.
- LINE VOLTAGE OCCUPANCY SENSOR MOUNTED 10' AFF. FAIL IN "ON" POSITION.
- CARD READER, INTEGRATE WITH EXISTING ACCESS CONTROL SYSTEM AND ELECTRONIC LATCHES.
- INSTALLED BY EQUIPMENT ON ROOF.
- MOUNT SWITCH TO GATE POST.
- COMBINATION STARTER AND UNIT MOUNTED DISCONNECTS PROVIDED BY DIVISION 15, INSTALLED AND CIRCUITED BY DIVISION 16 (LINE VOLTAGE ONLY); CONTROL WIRING 120VAC OR LOWER VOLTAGE BY OTHERS).
- RECEPTACLE SHALL BE MOUNTED AT 8' AFF WITHIN 5' OF NEARBY CONDENSATE PUMP.
- RECEPTACLE SHALL BE MOUNTED ABOVE CEILING WITHIN IN 5' OF CONDENSATE PUMP.
- UNIT MOUNTED DISCONNECTS PROVIDED BY DIVISION 15, INSTALLED AND CIRCUITED BY DIVISION 16
- JUNCTION BOX PROVIDED FOR MOTOR OPERATED DAMPER. MOUNT JUNCTION BOX TO STRUCTURAL STEEL. FOR MOTOR OPERATED DAMPER, PROVIDE 2#12, #12G, 3/4" C FROM THE LOAD SIDE OF THE EXHAUST FAN STARTER, PROVIDE FUSING AND STEP DOWN TRANSFORMER AS REQUIRED.



STATEMENT OF SUPERVISION
 THESE PLANS AND SPECIFICATIONS HAVE BEEN PREPARED UNDER MY SUPERVISION AND TO THE BEST OF MY KNOWLEDGE COMPLY WITH ALL LOCAL, STATE, AND FEDERAL REQUIREMENTS.

ISSUE DATE: 02/27/14

DEPT. APPROVAL	DATE
PROJECT APPROVAL	DATE
CLIENT APPROVAL	DATE
RESIDENT ENGR. APPROVAL	DATE

DESIGN GROUP FACILITY SOLUTIONS
 5 CHENELL DRIVE, BOX 3, CONCORD, NEW HAMPSHIRE 03301
 PHONE: (603) 225-0010 FAX: (603) 225-0761

DRAWN BY	DATE
CHECKED BY	DATE
MATERIAL	
REV	SCALE

PROPERTY OF THE J.M. SMUCKER COMPANY -IMPORTANT- THIS DRAWING PRINT IS LOANED FOR MUTUAL ASSISTANCE AND SUCH IS SUBJECT TO RECALL AT ANY TIME. INFORMATION CONTAINED HEREON IS NOT TO BE DISCLOSED OR REPRODUCED IN ANY FORM FOR THE BENEFIT OF PARTIES OTHER THAN NECESSARY SUBCONTRACTORS AND SUPPLIERS WITHOUT WRITTEN CONSENT OF THE J.M. SMUCKER COMPANY.

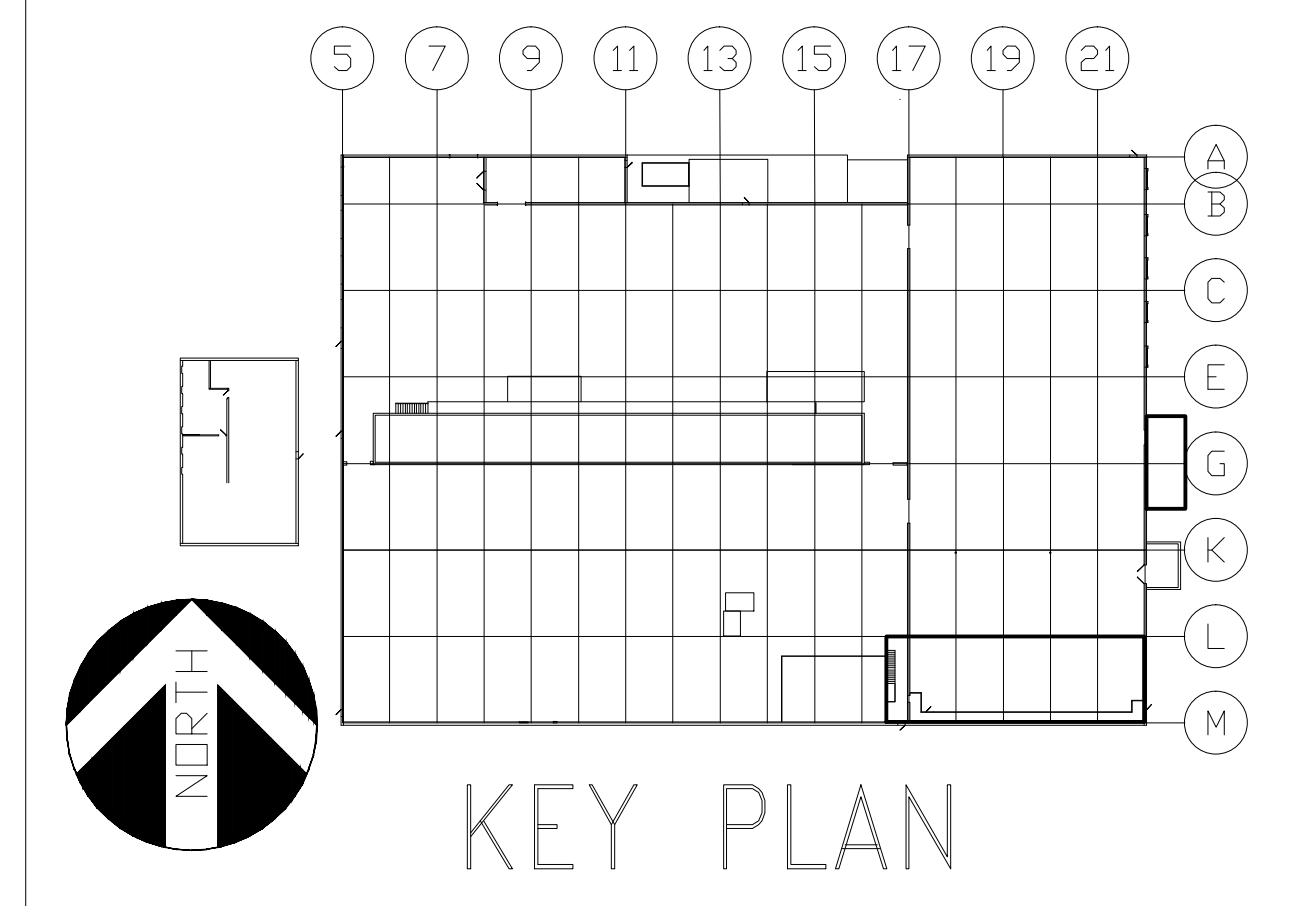
PROJECT ORANGE
ENLARGED FLOOR PLAN
ELECTRICAL
JMS FOODSERVICE LLC

DRAWING NUMBER **E1.2**
 SUPERSEDES

ISSUE	DATE
A ELECTRICAL REVISIONS	03/18/14
B MCC LAYOUT REVISION	05/19/14
C ISSUED FOR PERMIT	02/20/14

PHASE 1

-NO

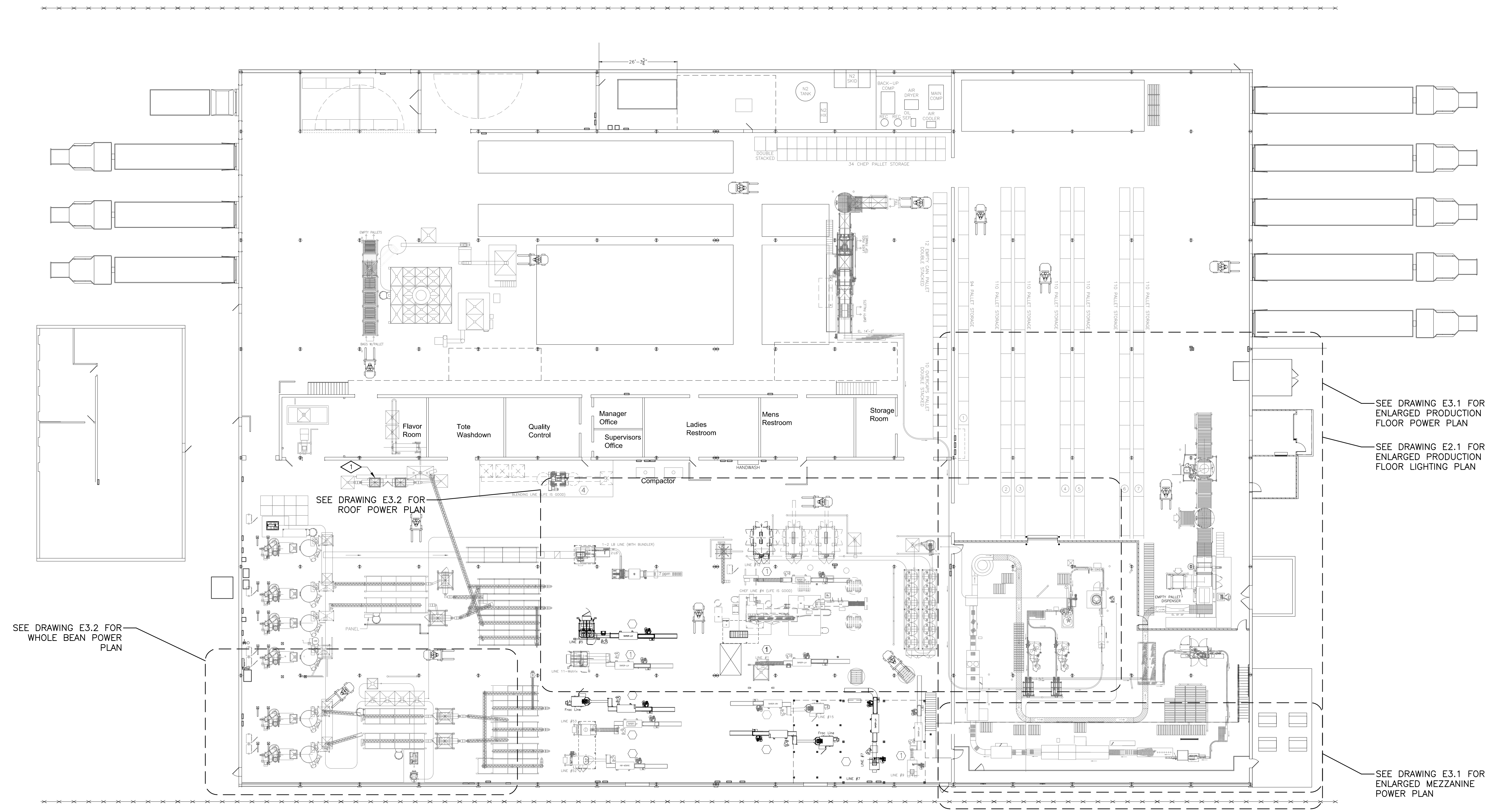


GENERAL NOTES

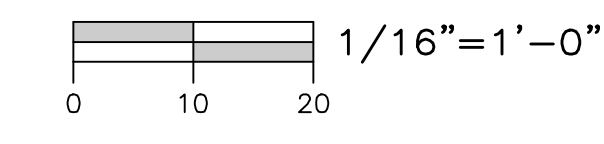
- 1. REFER TO DRAWING E1.1 FOR ELECTRICAL DRAWING PACKAGE GENERAL NOTES.

KEY NOTES

- ④ THE RELOCATED FRACTIONAL PACKAGE GRINDER ELECTRICAL POWER CIRCUIT SHALL BE MODIFIED AS FOLLOWS: THE 480VAC FEED FROM POPB (WEST WALL BY ROASTER #6) CIRCUIT #6 SHALL BE CHANGED TO A 60A 3P CIRCUIT BREAKER. THE EXISTING FEEDERS ARE #6 AND SHALL BE RE-USED. THE HEATERS IN THE MOTOR STARTER SHALL BE REPLACED AND MATCH TO THE NEW 25HP MOTOR, FUSE PER MANUFACTURER'S RECOMMENDATIONS.



OVERALL POWER PLAN



STATEMENT OF SUPERVISION
 THESE PLANS AND SPECIFICATIONS HAVE BEEN PREPARED UNDER MY SUPERVISION AND TO THE BEST OF MY KNOWLEDGE COMPLY WITH ALL LOCAL, STATE, AND FEDERAL REQUIREMENTS.

ISSUE DATE: 02/27/14

ISSUE	A	ELECTRICAL REVISIONS	GAP	03/18/14
	B	MCC LAYOUT REVISION	GAP	05/19/14
	C	ISSUED FOR PERMIT	GAP	03/20/14

DEPT. APPROVAL	DATE
PROJECT APPROVAL	DATE
CLIENT APPROVAL	DATE
RESIDENT ENGR. APPROVAL	DATE

DESIGN GROUP
FACILITY SOLUTIONS
 5 CHENELL DRIVE, BOX 3, CONCORD, NEW HAMPSHIRE 03301
 PHONE: (603) 225-0010 FAX: (603) 225-0761

DRAWN BY	DATE
CHECKED BY	DATE
MATERIAL	
REV	SCALE

PROPERTY OF THE J.M. SMUCKER COMPANY - IMPORTANT - THIS DRAWING PRINT IS LOANED FOR MUTUAL ASSISTANCE AND SUCH IS SUBJECT TO RECALL AT ANY TIME. INFORMATION CONTAINED HEREON IS NOT TO BE DISCLOSED OR REPRODUCED IN ANY FORM FOR THE BENEFIT OF PARTIES OTHER THAN NECESSARY SUBCONTRACTORS AND SUPPLIERS WITHOUT WRITTEN CONSENT OF THE J.M. SMUCKER COMPANY.	
LEVEL	TECH
LINE NO.	PRESENTATION
EQUIP. NO.	PLANT
DWG. LIST	PROD. AREA
SUB ASSY. NO.	DESCRIPTOR
QUANTITY	BLDG. NO.

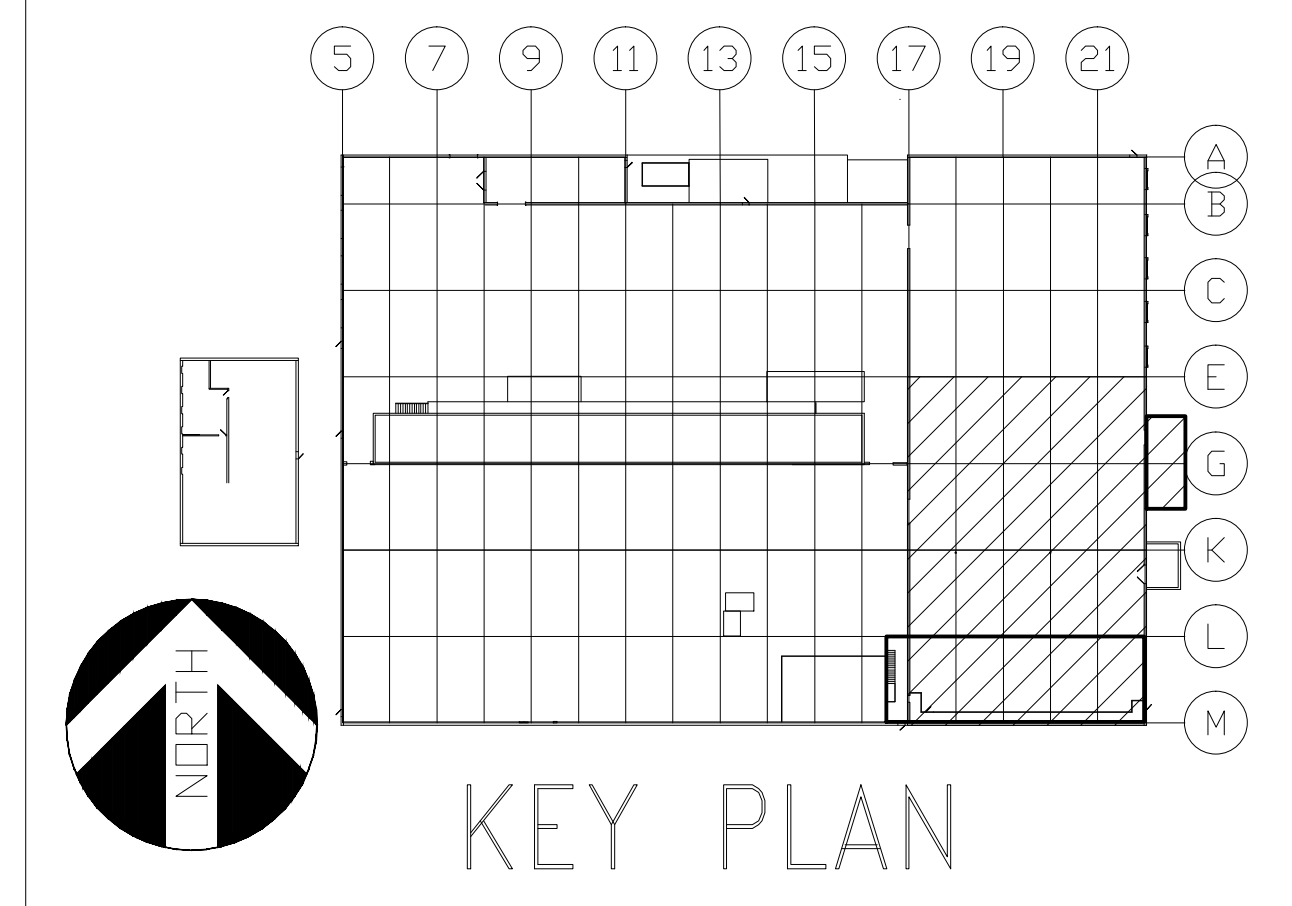
PHASE 2

PROJECT ORANGE
 OVERALL FLOOR PLAN
 ELECTRICAL
 JMS FOODSERVICE LLC

DRAWING NUMBER
E1.3

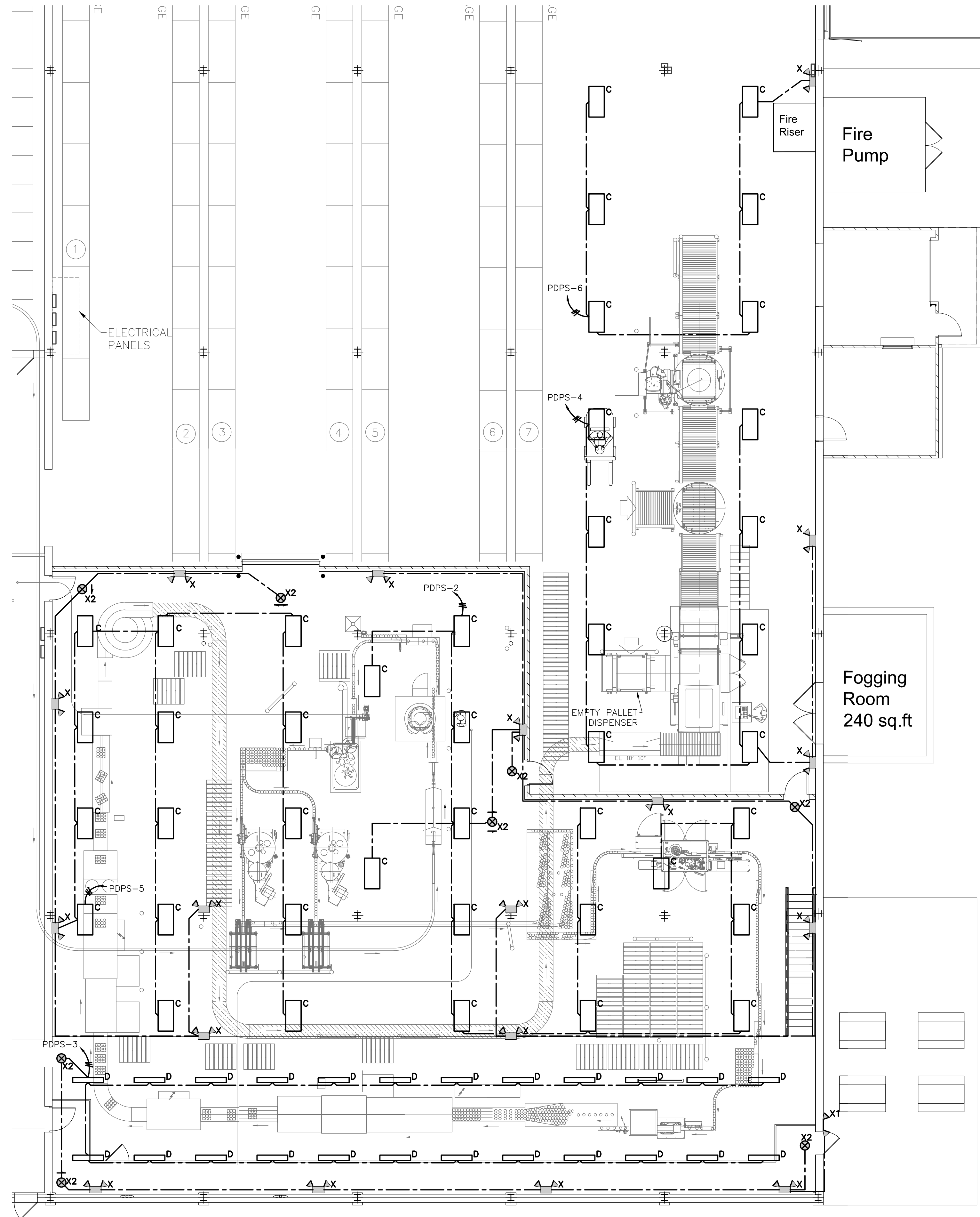
SUPERSEDES

-NO



GENERAL NOTES

1. REFER TO DRAWING E1.1 FOR ELECTRICAL DRAWING PACKAGE GENERAL NOTES.
2. PRODUCTION FLOOR LIGHTING TO BE CONTROLLED BY LIGHTING TIME CLOCK LOCATED IN ELECTRICAL ROOM. SEE DRAWING E3.1 MEZZANINE POWER PLAN FOR LOCATION.

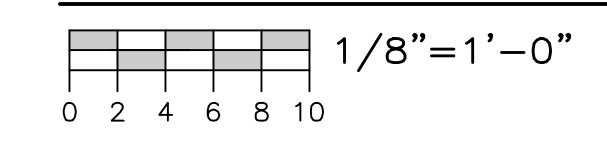


LUMINAIRE SCHEDULE						
KEY	DESCRIPTION AND FINISH	MOUNTING	MANUFACTURER	SERIES OR TYPE (NOT A COMPLETE QTY. #)	VOLT	LAMP(S)
C A	2x4 HOSEDOWN HIGH BAY WITH (6) 49W TSHO LAMPS, SPECULAR SPREAD BEAM REFLECTOR, CLEAR ACRYLIC LENS	20' AFF	LITHONIA	FHH24 654	277	SIX (6) 49-WATT TSHO LINEAR FLUORESCENT
D A	4' WET LOCATION ENCLOSURE WITH (2) TS LAMPS, 50% DR HIGH IMPACT ACRYLIC LENS	10' AFF	LITHONIA	DMW 2 28T5	277	TWO (2) 28-WATT TS LINEAR FLUORESCENT
E	STANCHION MOUNTED EXTERIOR LIGHT W/ (2) 42W COMPACT FLUORESCENT	8' AFF	COOPER INDUSTRIES	DMVFP084GP	277	(2) 42W COMPACT FLUORESCENT
X A B	PAR 36 GLASS SEALED BEAM LAMP	12' AFF	LITHONIA	INDX1254 H2012 ULT	277	HALOGEN, 20 WATT, 12 VOLT
X1 A B	PAR 36 GLASS SEALED BEAM LAMP	12' AFF	LITHONIA	ELA W T NX H1212	12V	HALOGEN, 20 WATT, 12 VOLT
X2 A B	EXIT SIGN	8'6" AFF AT DOORS 12' AFF ALL OTHER AREAS	EMGERI-LITE	WW SVXN 2 R -D -4X -DC	277	-

LUMINAIRE KEY NOTES

- A LIGHTING SHALL BE NSF RATED IF THE AREA IS OPEN TO THE PRODUCTION AREA.
- B LIFE SAFETY CONNECTED TO LOCAL UNSWITCHED LIGHTING CIRCUIT THAT IS INDICATED.

PRODUCTION FLOOR LIGHTING PLAN



STATEMENT OF SUPERVISION
 THESE PLANS AND SPECIFICATIONS HAVE BEEN PREPARED UNDER MY SUPERVISION AND TO THE BEST OF MY KNOWLEDGE COMPLY WITH ALL LOCAL, STATE, AND FEDERAL REQUIREMENTS.

ISSUE DATE: 02/27/14

ISSUE	DATE
A ELECTRICAL REVISIONS	GAP 03/18/14
B MCC LAYOUT REVISION	GAP 05/19/14
C ISSUED FOR PERMIT	GAP 03/20/14

DEPT. APPROVAL	DATE
PROJECT APPROVAL	DATE
CLIENT APPROVAL	DATE
RESIDENT ENGR. APPROVAL	DATE

DESIGN GROUP
FACILITY SOLUTIONS
 5 CHENELL DRIVE, BOX 3, CONCORD, NEW HAMPSHIRE 03301
 PHONE: (603) 225-0010 FAX: (603) 225-0761

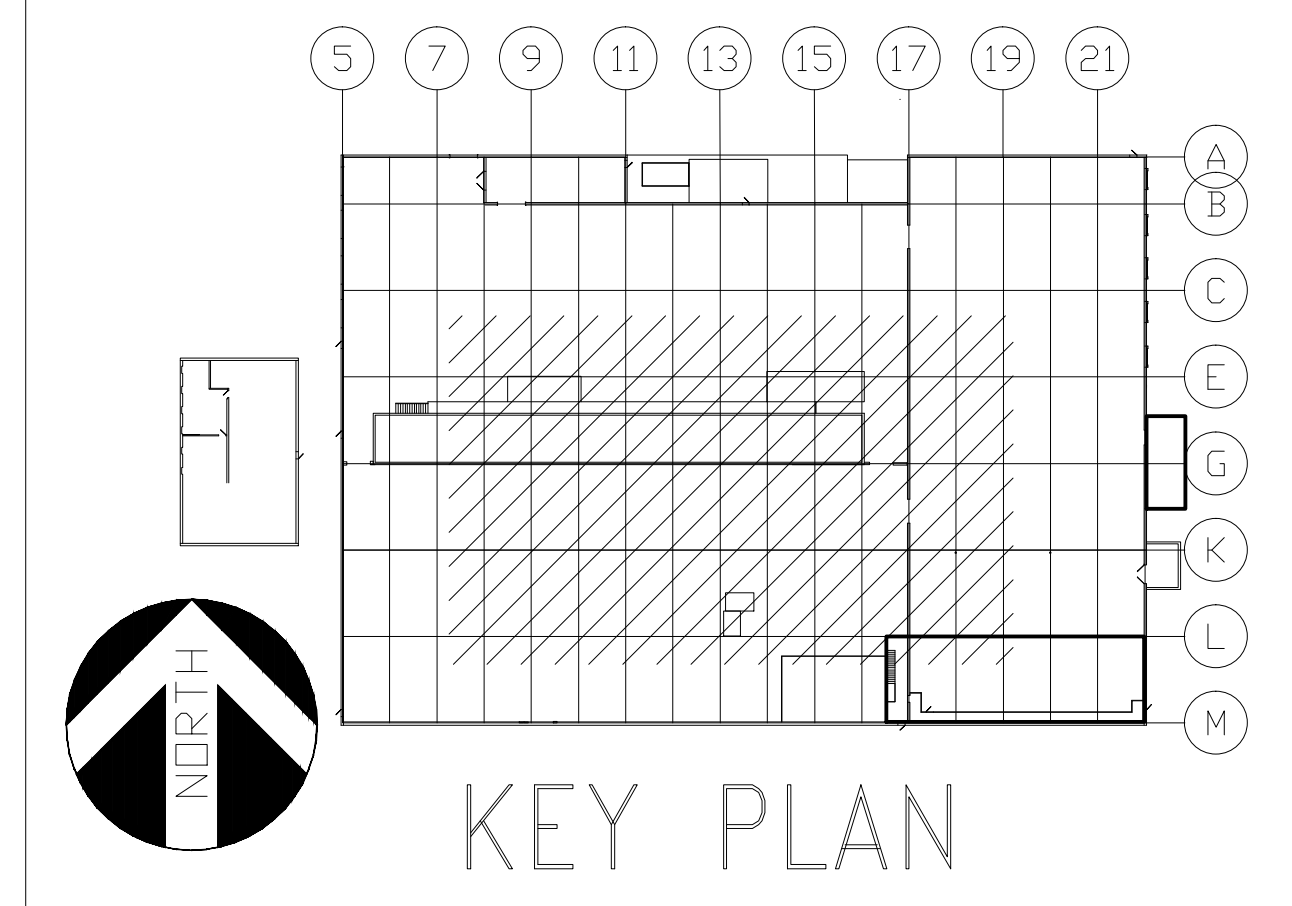
DRAWN BY	DATE	PROPERTY OF THE J.M. SMUCKER COMPANY -IMPORTANT- THIS DRAWING PRINT IS LOANED FOR MUTUAL ASSISTANCE AND SUCH IS SUBJECT TO RECALL AT ANY TIME. INFORMATION CONTAINED HEREON IS NOT TO BE DISCLOSED OR REPRODUCED IN ANY FORM FOR THE BENEFIT OF PARTIES OTHER THAN NECESSARY SUBCONTRACTORS AND SUPPLIERS WITHOUT WRITTEN CONSENT OF THE J.M. SMUCKER COMPANY.	
CHECKED BY	DATE	LEVEL	TECH
GAP	01/07/2014	LINE NO.	PRESENTATION
MATERIAL		EQUIP. NO.	PLANT
		DWG. LIST	PROD. AREA
		SUB ASSY. NO.	DESCRIPTOR
		QUANTITY	BLDG. NO.

PROJECT ORANGE
ENLARGED FLOOR PLAN
LIGHTING
JMS FOODSERVICE LLC

DRAWING NUMBER **E2.1**
 SUPERSEDES

PHASE 2

-NO

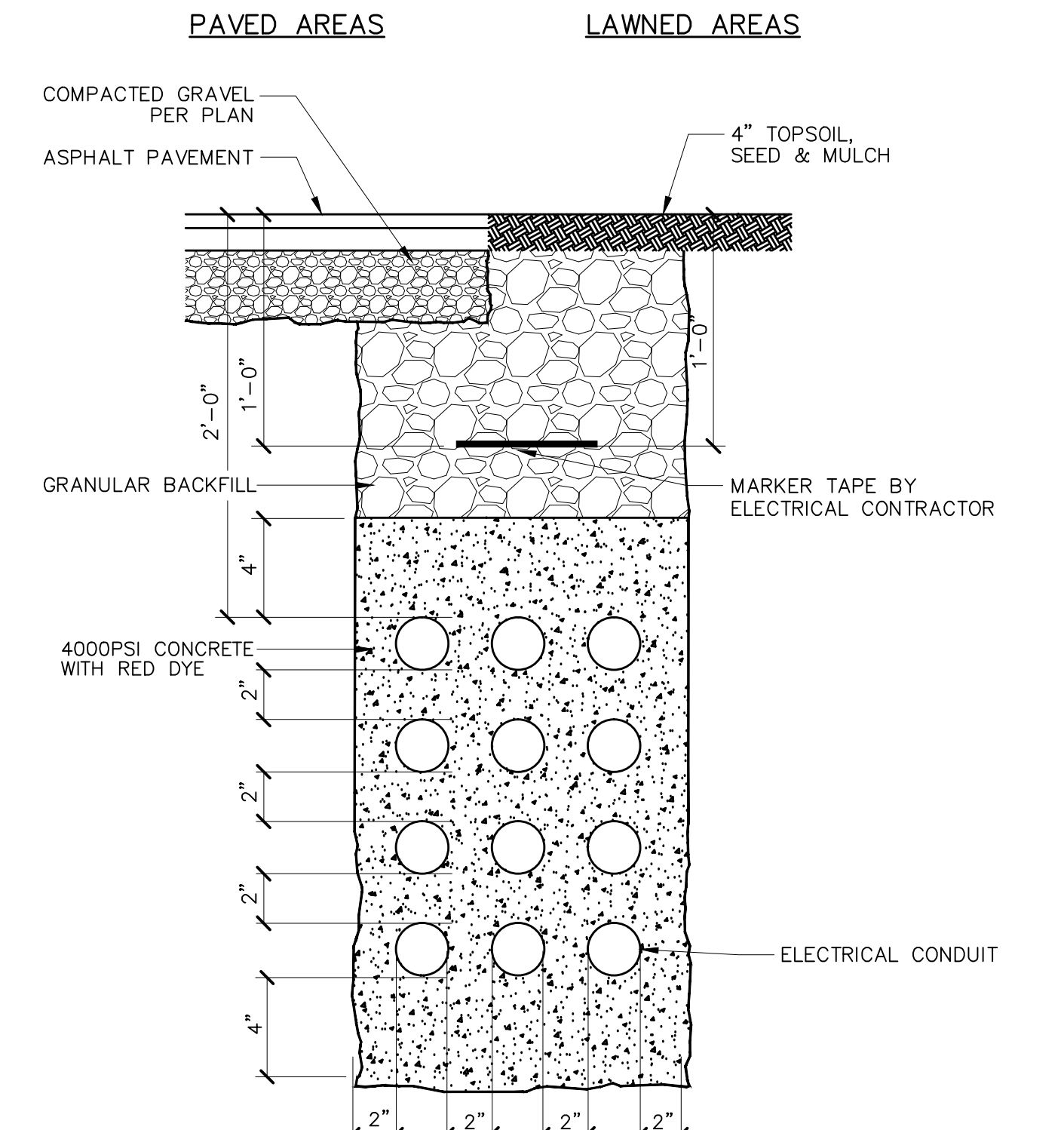
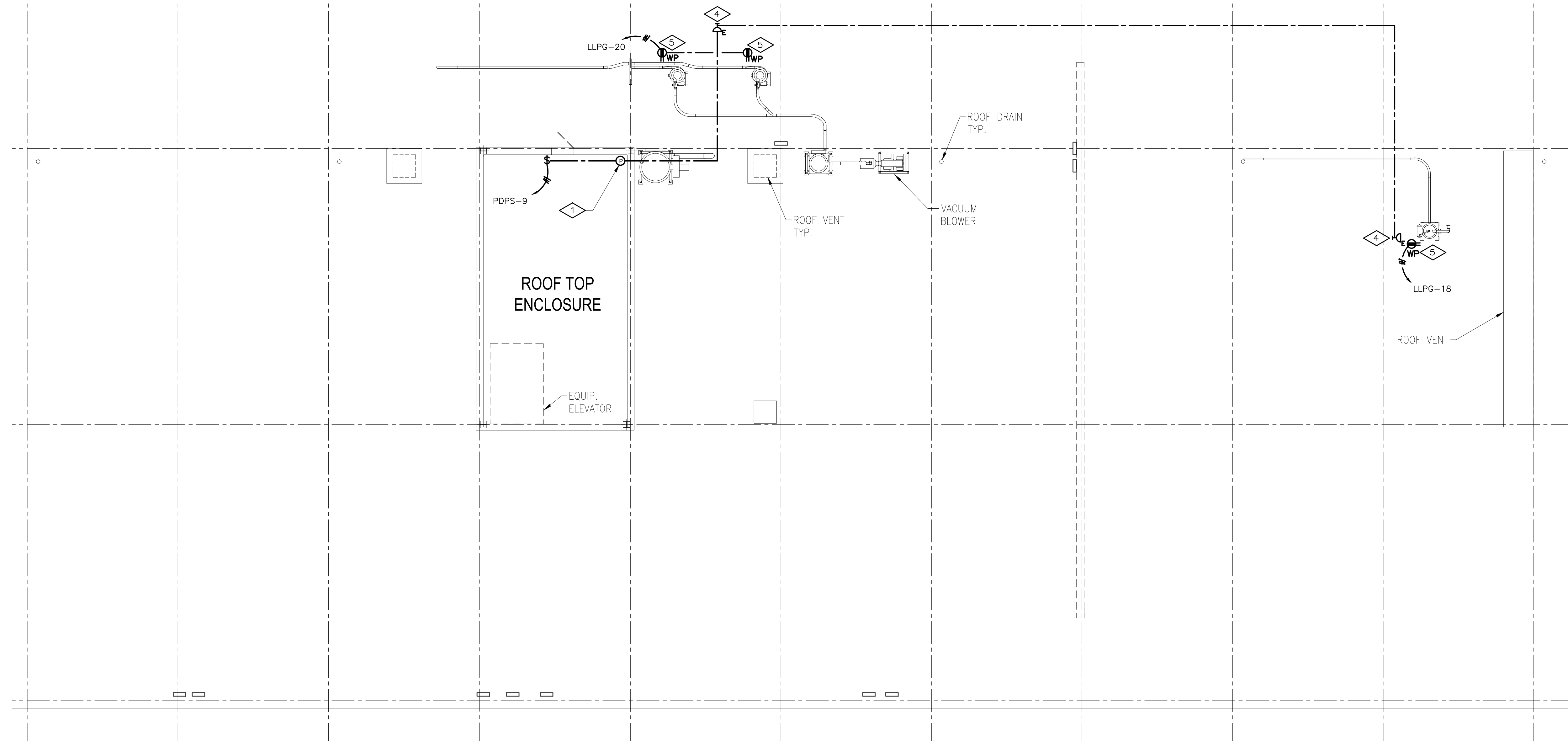


GENERAL NOTES

- 1. REFER TO DRAWING E1.1 FOR ELECTRICAL DRAWING PACKAGE GENERAL NOTES.

KEY NOTES

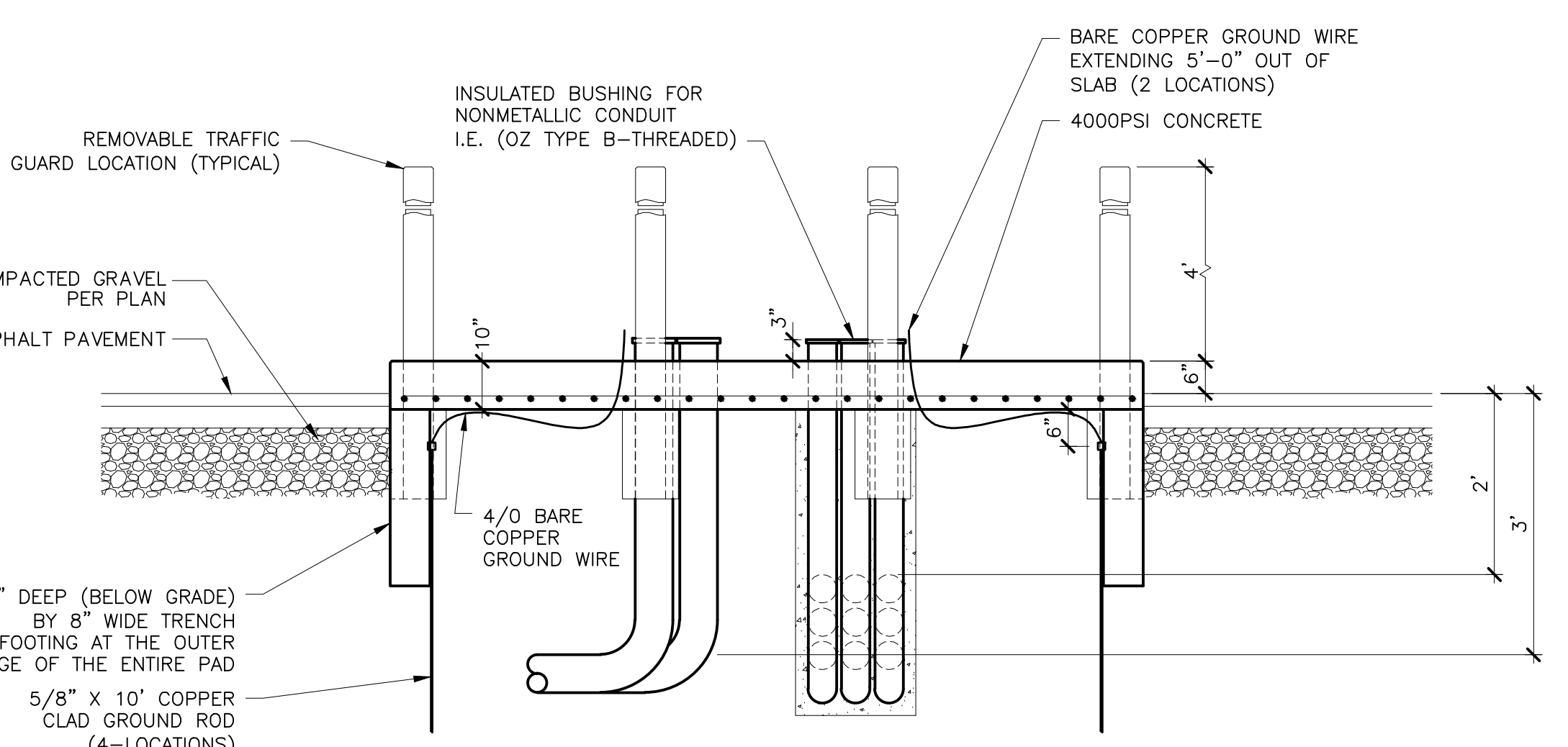
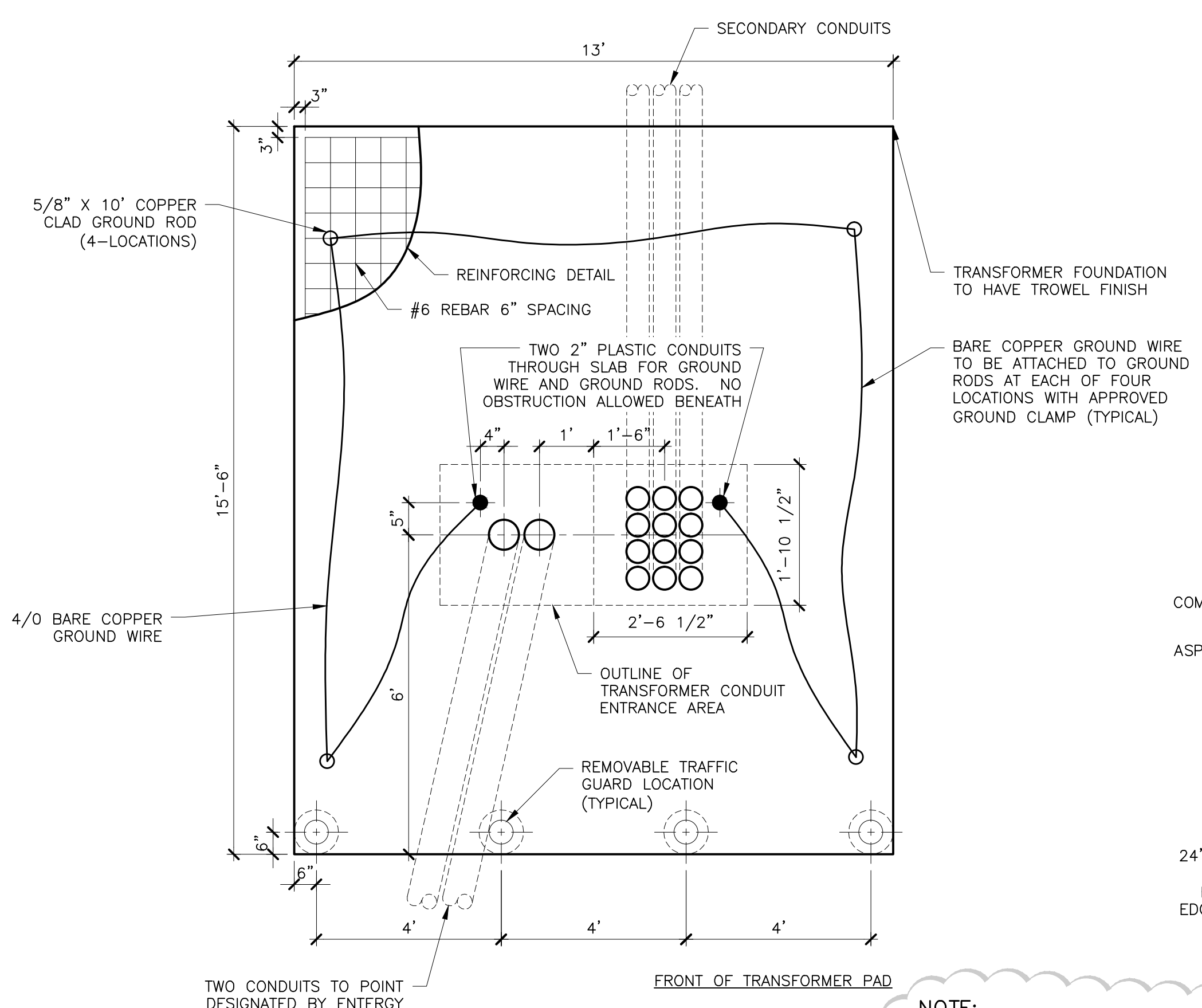
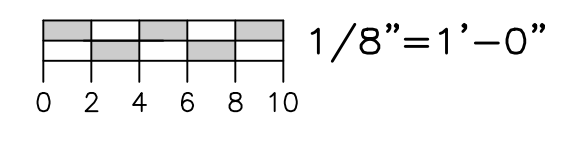
- 1 PHOTOCELL SHALL BE MOUNTED ON EXTERIOR OF ROOF OF EXISTING STRUCTURE, AIM AS REQUIRED.
- 2 RECEPTACLE SHALL BE MOUNTED AT 24" ABOVE PLATFORM LEVEL.
- 3 RECEPTACLE SHALL BE CIRCUITED TO (X) PANEL C; PROVIDE (1) 20A 1P CIRCUIT BREAKER TO MATCH EXISTING CIRCUIT BREAKERS IN (X) PANEL C.
- 4 STANCHION MOUNTED FIXTURE SHALL BE MOUNTED TO EQUIPMENT STRUCTURE.
- 5 INSTALL BY EQUIPMENT ON ROOF



- NOTES:
- 1. COMPLY WITH OSHA TRENCH PROTECTION REQUIREMENTS.
 - 2. TRENCHING AND BACK FILL BY GENERAL CONTRACTOR.
 - 3. PROVIDE CONDUIT SPACERS EVERY 5 FEET.

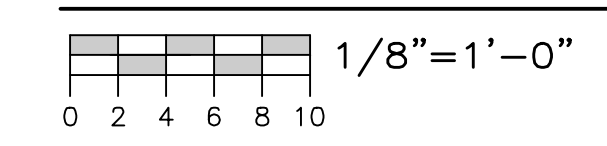
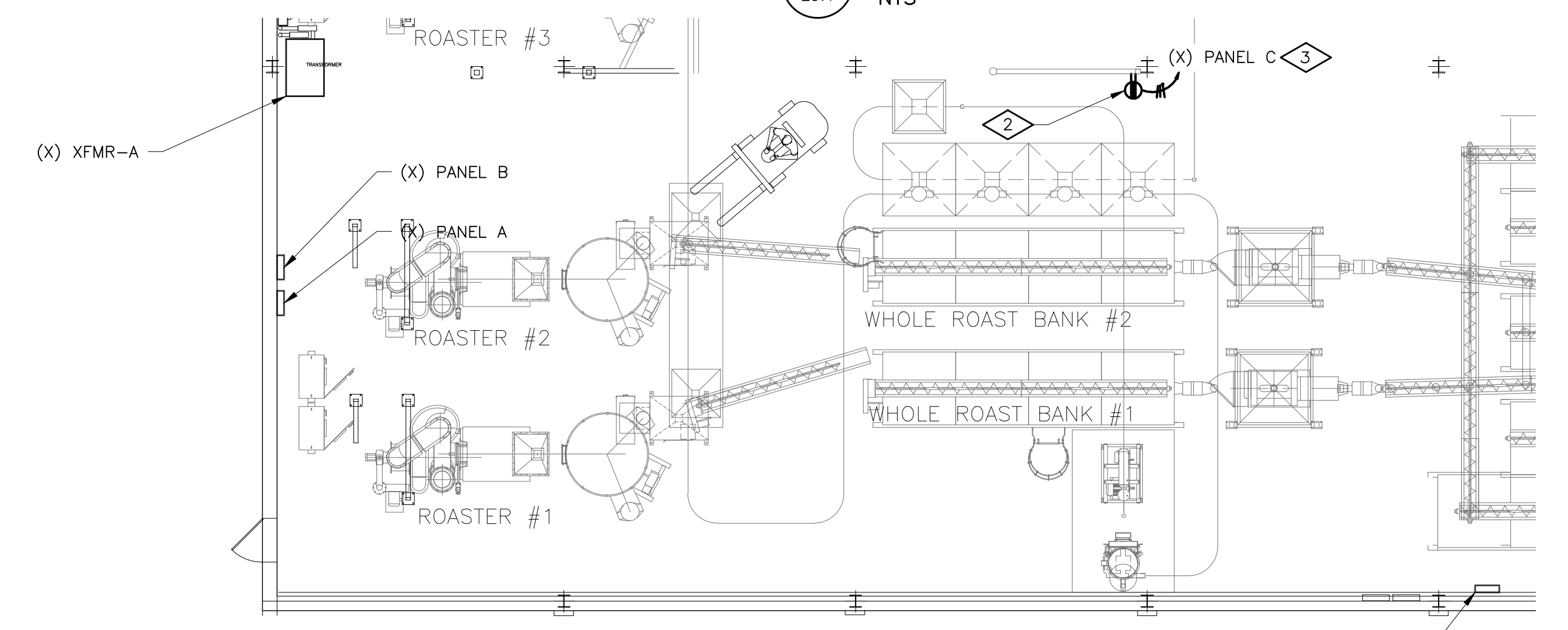
1 CONCRETE ENCASED SITE CONDUIT DETAIL E3.1 NTS

ROOF POWER PLAN



NOTE:
1. CONTRACTOR SHALL CONTACT ENTERGY PRIOR TO CONSTRUCTION OF THE UTILITY TRANSFORMER PAD TO VERIFY LOCATION, SIZE, GROUNDING AND CONDUIT REQUIREMENTS.

2 UTILITY TRANSFORMER PAD DETAIL E3.1 NTS



PHASE 2



STATEMENT OF SUPERVISION
THESE PLANS AND SPECIFICATIONS HAVE BEEN PREPARED UNDER MY SUPERVISION AND TO THE BEST OF MY KNOWLEDGE COMPLY WITH ALL LOCAL, STATE, AND FEDERAL REQUIREMENTS.

ISSUE DATE: 02/27/14

DEPT. APPROVAL	DATE
PROJECT APPROVAL	DATE
CLIENT APPROVAL	DATE
RESIDENT ENGR. APPROVAL	DATE

DESIGN GROUP
FACILITY SOLUTIONS
5 CHENELL DRIVE, BOX 3, CONCORD, NEW HAMPSHIRE 03301
PHONE: (603) 225-0010 FAX: (603) 225-0761

CHECKED BY	DATE
GAP	01/07/2014
MATERIAL	
REVISION	

PROPERTY OF THE J.M. SMUCKER COMPANY -IMPORTANT- THIS DRAWING PRINT IS LOANED FOR MUTUAL ASSISTANCE AND SUCH IS SUBJECT TO RECALL AT ANY TIME. INFORMATION CONTAINED HEREON IS NOT TO BE DISCLOSED OR REPRODUCED IN ANY FORM FOR THE BENEFIT OF PARTIES OTHER THAN NECESSARY SUBCONTRACTORS AND SUPPLIERS WITHOUT WRITTEN CONSENT OF THE J.M. SMUCKER COMPANY.	
LEVEL	TECH
LINE NO.	PRESENTATION
EQUIP. NO.	PLANT
DWG. LIST	PROD. AREA
SUB ASSY. NO.	DESCRIPTOR
QUANTITY	BLDG. NO.

PROJECT ORANGE
ROOF PLAN AND DETAILS
POWER
JMS FOODSERVICE LLC

DRAWING NUMBER
E3.2
SUPERSEDES

ISSUE	
A ELECTRICAL REVISIONS	
GAP 03/18/14	
B WCC LAYOUT REVISION	
GAP 05/19/14	
C ISSUED FOR PERMIT	
GAP 02/20/14	

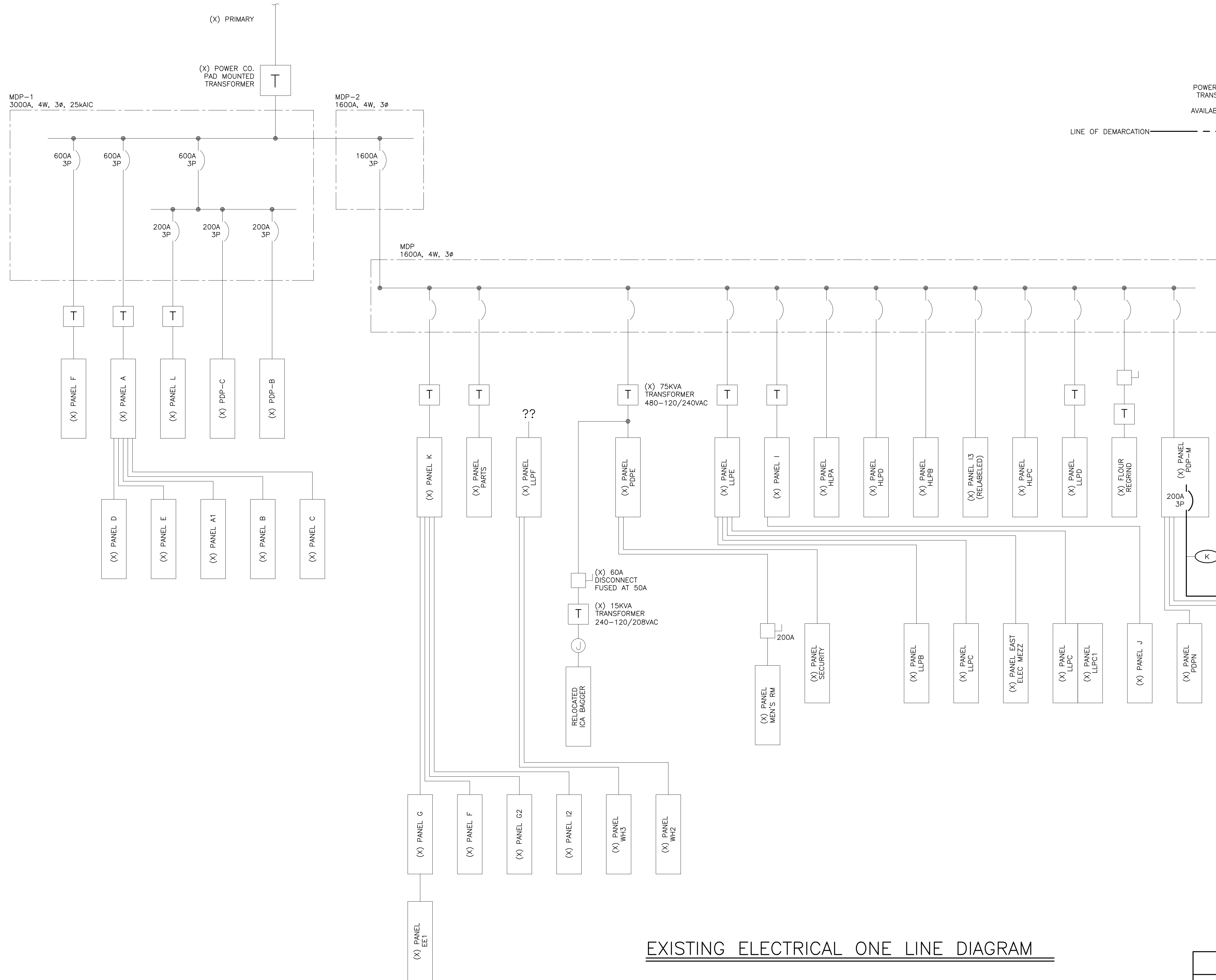
-NO

GENERAL NOTES

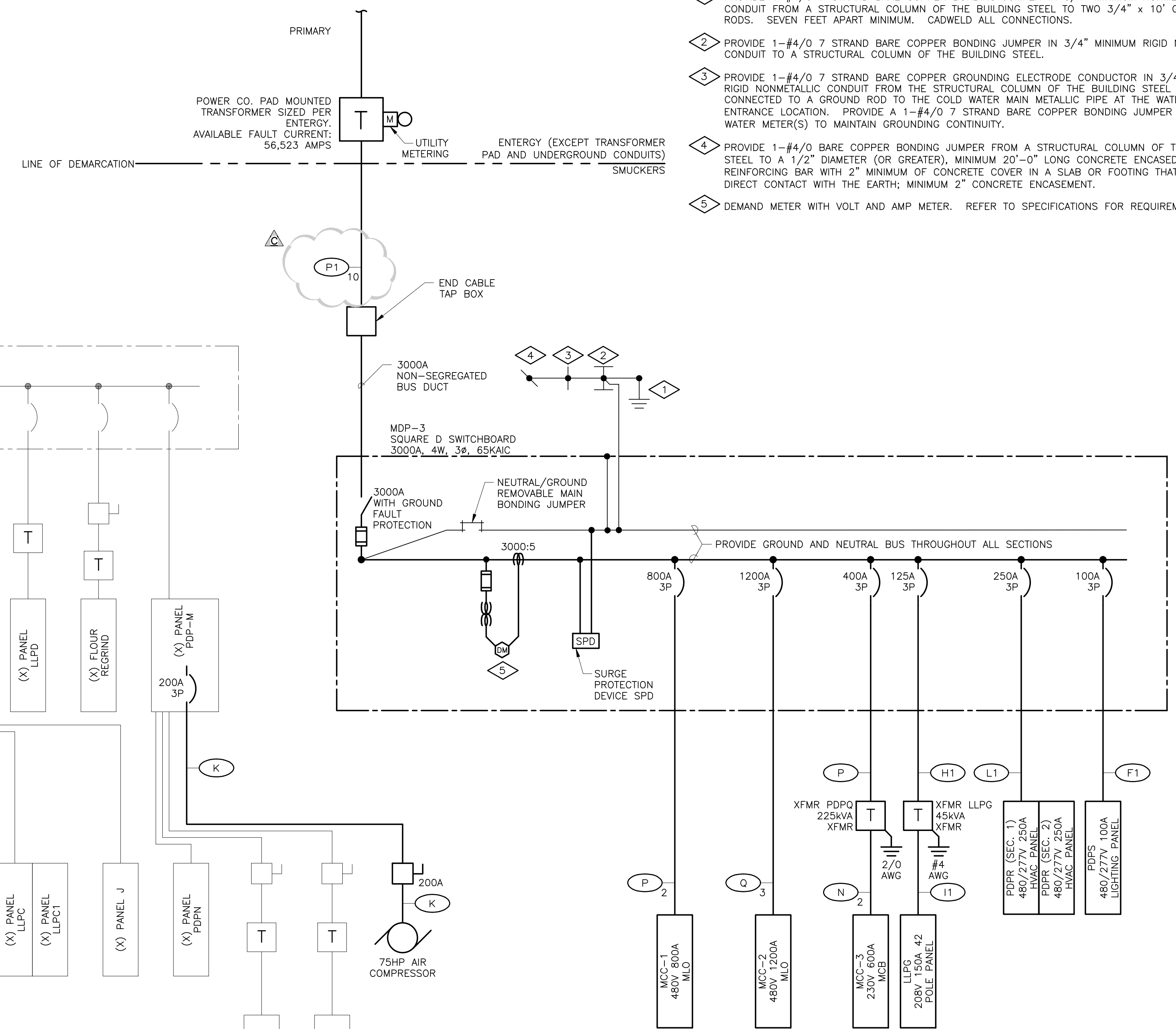
- 1. REFER TO DRAWING E1.1 FOR ELECTRICAL DRAWING PACKAGE GENERAL NOTES.

KEY NOTES

- 1. PROVIDE 1-#4/0 7 STRAND BARE COPPER BONDING JUMPER IN 3/4" MINIMUM NONMETALLIC RIGID CONDUIT FROM A STRUCTURAL COLUMN OF THE BUILDING STEEL TO TWO 3/4" x 10' GROUND RODS, SEVEN FEET APART MINIMUM, CADCWELDED ALL CONNECTIONS.
- 2. PROVIDE 1-#4/0 7 STRAND BARE COPPER BONDING JUMPER IN 3/4" MINIMUM RIGID NONMETALLIC CONDUIT TO A STRUCTURAL COLUMN OF THE BUILDING STEEL.
- 3. PROVIDE 1-#4/0 7 STRAND BARE COPPER GROUNDING ELECTRODE CONDUCTOR IN 3/4" MINIMUM RIGID NONMETALLIC CONDUIT FROM THE STRUCTURAL COLUMN OF THE BUILDING STEEL THAT IS CONNECTED TO A GROUND ROD TO THE COLD WATER MAIN METALLIC PIPE AT THE WATER ENTRANCE LOCATION. PROVIDE A 1-#4/0 7 STRAND BARE COPPER BONDING JUMPER AT THE WATER METER(S) TO MAINTAIN GROUNDING CONTINUITY.
- 4. PROVIDE 1-#4/0 BARE COPPER BONDING JUMPER FROM A STRUCTURAL COLUMN OF THE BUILDING STEEL TO A 1/2" DIAMETER (OR GREATER), MINIMUM 20'-0" LONG CONCRETE ENCASED REINFORCING BAR WITH 2" MINIMUM OF CONCRETE COVER IN A SLAB OR FOOTING THAT IS IN DIRECT CONTACT WITH THE EARTH; MINIMUM 2" CONCRETE ENCASEMENT.
- 5. DEMAND METER WITH VOLT AND AMP METER. REFER TO SPECIFICATIONS FOR REQUIREMENTS.



EXISTING ELECTRICAL ONE LINE DIAGRAM



NEW ELECTRICAL ONE LINE DIAGRAM

ELECTRICAL LEGEND

SYMBOL	DESCRIPTION
[Symbol]	ONE-LINE DIAGRAM
[Symbol]	PANELBOARD AND OTHER LOADS (AS NOTED)
[Symbol]	TRANSFORMER
[Symbol]	DISCONNECT SWITCH
[Symbol]	FUSE
[Symbol]	CIRCUIT BREAKER
[Symbol]	GROUND FAULT
[Symbol]	GROUND CONNECTION
[Symbol]	JUNCTION BOX
[Symbol]	MOTOR
[Symbol]	EQUIPMENT ENCLOSURE OUT LINE
[Symbol]	WORK UNDER THIS CONTRACT
[Symbol]	EXISTING EQUIPMENT AND FEEDERS

CONDUIT AND WIRE SCHEDULE

CONDUIT	CU CONDUCTORS	CONDUIT	CU CONDUCTORS	CONDUIT
A	3#12, 1#12G	3/4"	I	3#2/0, 1#6G
A1	4#12, 1#12G	3/4"	J	4#2/0, 1#6G
B	3#10, 1#10G	3/4"	J1	3#3/0, 1#6G
B1	4#10, 1#10G	3/4"	J1	4#3/0, 1#6G
C	3#8, 1#10G	1"	K	3#4/0, 1#4G
C1	4#8, 1#10G	1"	K1	4#4/0, 1#4G
D	3#6, 1#10G	1-1/4"	L	3#250 KCML, 1#4G
D1	4#6, 1#10G	1-1/4"	L1	4#250 KCML, 1#4G
E	3#4, 1#8G	1-1/4"	M	3#300 KCML, 1#4G
E1	4#4, 1#8G	1-1/2"	M1	4#300 KCML, 1#4G
F	3#2, 1#8G	1-1/2"	N	3#350 KCML, 1#2G
F1	4#2, 1#8G	1-1/2"	N1	4#350 KCML, 1#2G
G	3#1, 1#6G	1-1/2"	O	3#400 KCML, 1#2G
G1	4#1, 1#6G	1-1/2"	O1	4#400 KCML, 1#2G
H	3#1/0, 1#6G	2"	P	3#500 KCML, 1#2G
H1	4#1/0, 1#6G	2-1/2"	P1	4#500 KCML, 1#2G
FV	FIELD VERIFY BY OTHERS		O	3#600 KCML, 1#2G
BO	SEE SCHEDULE		O1	4#600 KCML, 1#2G
SS	UNDERSLAB ROUTING			

NOTES:

1. ALL FEEDERS SHALL BE "XHHW" TYPE INSULATION. CONDUCTOR MATERIAL SHALL BE COPPER.
2. CONDUCTOR LENGTHS SHALL BE CONTINUOUS FROM TERMINATION TO TERMINATION WITHOUT SPLICES.
3. NUMBER OUTSIDE THE FEEDER SYMBOL INDICATES PARALLEL RUNS OF CONDUIT AND WIRE.
4. GROUND CONDUCTOR SIZES OTHER THAN IN THE SCHEDULE FOR EACH RUN ARE NOTED OUTSIDE THE FEEDER SYMBOL.



STATEMENT OF SUPERVISION
 THESE PLANS AND SPECIFICATIONS HAVE BEEN PREPARED UNDER MY SUPERVISION AND TO THE BEST OF MY KNOWLEDGE COMPLY WITH ALL LOCAL, STATE, AND FEDERAL REQUIREMENTS.

ISSUE DATE: 02/27/14

DEPT. APPROVAL	DATE
PROJECT APPROVAL	DATE
CLIENT APPROVAL	DATE
RESIDENT ENGR. APPROVAL	DATE

DESIGN GROUP
FACILITY SOLUTIONS
 5 CHENELL DRIVE, BOX 3, CONCORD, NEW HAMPSHIRE 03301
 PHONE: (603) 225-0010 FAX: (603) 225-0761

DRAWN BY	DATE	PROPERTY OF THE J.M. SMUCKER COMPANY - IMPORTANT - THIS DRAWING PRINT IS LOANED FOR MUTUAL ASSISTANCE AND SUCH IS SUBJECT TO RECALL AT ANY TIME. INFORMATION CONTAINED HEREON IS NOT TO BE DISCLOSED OR REPRODUCED IN ANY FORM FOR THE BENEFIT OF PARTIES OTHER THAN NECESSARY SUBCONTRACTORS AND SUPPLIERS WITHOUT WRITTEN CONSENT OF THE J.M. SMUCKER COMPANY.
CHECKED BY	DATE	LEVEL
GAP	01/07/2014	PRESENTATION
MATERIAL		EQUIP. NO.
		DWG. LIST
		PROD. AREA
		SUB ASSY. NO.
		QUANTITY
		BLDG. NO.

PROJECT ORANGE
ELECTRICAL ONE LINE
DIAGRAM

DRAWING NUMBER **E5.1**

JMS FOODSERVICE LLC

ISSUE

A. ELECTRICAL REVISIONS	GAP	03/18/14
B. MCC LAYOUT REVISION	GAP	05/19/14
C. ISSUED FOR PERMIT	GAP	03/20/14

-NO

TYPE : SQUARE D		LOCATION ELECTRICAL ROOM SWITCHBOARD MDP-3						VOLTAGE : 480V, 3Ø, 4W			
DIMENSIONS : 28"D X 9"W		THREE PHASE SWITCHBOARD						MAINS : 3000A			
MOUNTING : FLOOR								A.I.C. RATING : 65,000			
PANEL FEED : TOP								LUGS SIZE : SEE ONE LINE DIAGRAM			
DESCRIPTION	CONNECTED LOAD (VA)			WIRE	BKR	PHASE	WIRE	CONNECTED LOAD (VA)			DESCRIPTION
MCC-1	99486	99486	99486	-	800/3	1 • 2	250/3	38558	38558		PDP
MCC-2	223000	223000	223000	-	1200/3	7 • 8	100/3	5784	3776		PDP
XFMR - MCC-3	50154	50154	50454	-	400/3	13 • 14	125/3	6276	7748		XFMR - LLPG
TOTALS:	372640	372640	372640					50618	50082	52683	
LIGHTING: RECEPTACLES: FIRST 10.0KVA		15.5	1.25	19.3	A	423.2	1528	REFER TO ONE LINE DIAGRAM			
REMAINING		5.8	1.00	5.8	B	422.7	1526	FOR CONDUCTOR AND CONDUIT SIZES / QUANTITY			
MOTORS: LARGEST		41.4	1.25	51.8	C	425.3	1535				
REMAINING		659.6	1.00	659.6							
HEATING:		16.2	1.00	16.2							
MISCELLANEOUS:		532.7	1.00	532.7							
TOTALS:		1271.2		1285.4 (1546A @480V)							

MECHANICAL EQUIPMENT SCHEDULE							
DESCRIPTION	LOAD	VOLTAGE SYSTEM	CONDUCTORS AND CONDUIT	CIRCUIT PROTECT	CONTACTOR OR STARTER	LOCAL DISCONNECT	REMARKS
EF-3 MECHANICAL ROOM EXHAUST FAN	7.6A	480V 3Ø	(3#10, 1#10G) 3/4" C	20A3P	BY OTHERS	BY OTHERS	PROVIDED WITH MOD.
EF-4 MECHANICAL ROOM EXHAUST FAN	7.6A	480V 3Ø	(3#10, 1#10G) 3/4" C	20A3P	BY OTHERS	BY OTHERS	PROVIDED WITH MOD.
EF-5 PALLETIZER AREA EXHAUST FAN	14A	480V 3Ø	(3#10, 1#10G) 3/4" C	20A3P	BY OTHERS	BY OTHERS	PROVIDED WITH MOD.
EF-6 CAN PACKING ROOM EXHAUST FAN	14A	480V 3Ø	(3#10, 1#10G) 3/4" C	20A3P	BY OTHERS	BY OTHERS	PROVIDED WITH MOD.
EF-7 CAN PACKING ROOM EXHAUST FAN	14A	480V 3Ø	(3#10, 1#10G) 3/4" C	20A3P	BY OTHERS	BY OTHERS	PROVIDED WITH MOD.
EF-8 CAN PACKING ROOM EXHAUST FAN	14A	480V 3Ø	(3#10, 1#10G) 3/4" C	20A3P	BY OTHERS	BY OTHERS	PROVIDED WITH MOD.
EF-9 CAN PACKING ROOM EXHAUST FAN	14A	480V 3Ø	(3#10, 1#10G) 3/4" C	20A3P	BY OTHERS	BY OTHERS	PROVIDED WITH MOD.
SF-1 CAN PACKING ROOM SUPPLY FAN	27A	480V 3Ø	(3#6, 1#10G) 1" C	50A3P	BY OTHERS	BY OTHERS	PROVIDED WITH MOD.
SF-2 CAN PACKING ROOM SUPPLY FAN	27A	480V 3Ø	(3#6, 1#10G) 1" C	50A3P	BY OTHERS	BY OTHERS	PROVIDED WITH MOD.
AC-1A RECEIVING OFFICE AIR HANDLER	1A	208V 1Ø	(2#12, 1#12G) 3/4" C	VIA AC-1B	N/A	BY OTHERS	-
AC-1B RECEIVING OFFICE AIR CONDENSER	12A	208V 1Ø	(2#12, 1#10G) 3/4" C	20A2P	N/A	BY OTHERS	-
AC-2A MEZZANINE OFFICE AIR HANDLER	1A	208V 1Ø	(2#12, 1#12G) 3/4" C	VIA AC-2B	N/A	BY OTHERS	-
AC-2B MEZZANINE OFFICE AIR CONDENSER	12A	208V 1Ø	(2#10, 1#10G) 3/4" C	20A2P	N/A	BY OTHERS	-
AC-3A ELECTRICAL ROOM AIR HANDLER	2A	208V 1Ø	(2#12, 1#12G) 3/4" C	VIA AC-3B	N/A	BY OTHERS	-
AC-3B ELECTRICAL ROOM AIR CONDENSER	26A	208V 1Ø	(2#8, 1#10G) 3/4" C	35A2P	N/A	BY OTHERS	-
AC-4A ELECTRICAL ROOM AIR HANDLER	2A	208V 1Ø	(2#12, 1#12G) 3/4" C	VIA AC-4B	N/A	BY OTHERS	-
AC-4B ELECTRICAL ROOM AIR CONDENSER	26A	208V 1Ø	(2#8, 1#10G) 3/4" C	35A2P	N/A	BY OTHERS	-
CP-1 MEZZANINE OFFICE CONDENSATE PUMP	1.5A	120V 1Ø	(2#12, 1#12G) 3/4" C	20A1P	N/A	N/A	PROVIDED WITH 6" CORD
CP-21 RECEIVING OFFICE CONDENSATE PUMP	1.5A	120V 1Ø	(2#12, 1#12G) 3/4" C	20A1P	N/A	N/A	PROVIDED WITH 6" CORD
ABBREVIATIONS MOD = MOTOR OPERATED DAMPER							

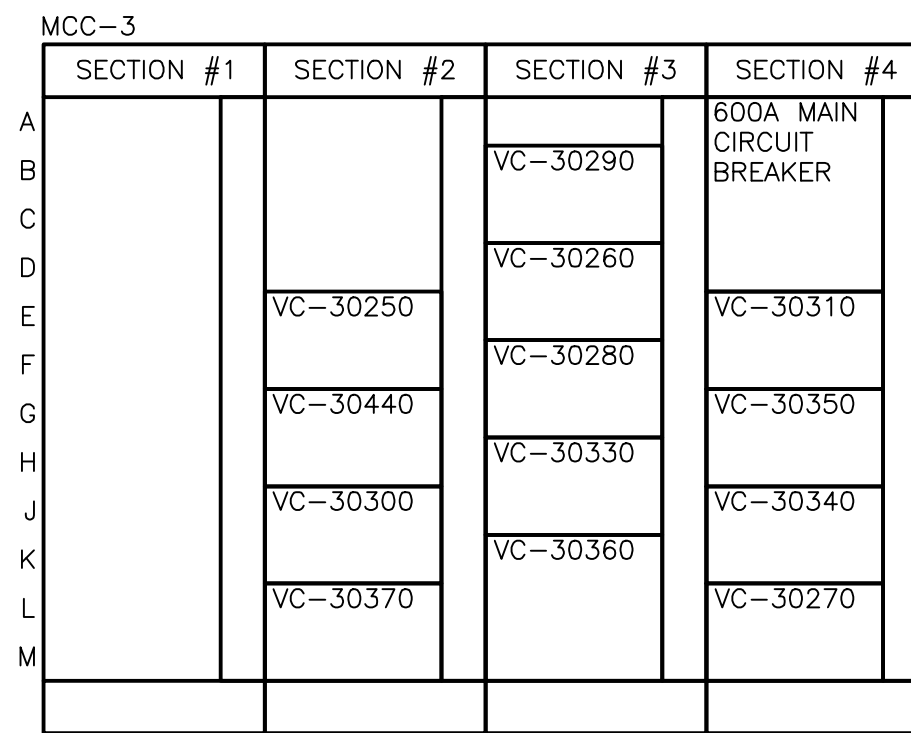
TYPE : SQUARE D NF SERIES		LOCATION ELECTRICAL ROOM PANEL PDP (SECTION 1)						VOLTAGE : 480/277V, 3Ø, 4W			
DIMENSIONS : 20"W X 5.75"D		THREE PHASE PANEL						MAINS : 250A MCB			
MOUNTING : SURFACE								A.I.C. RATING : 65,000			
PANEL FEED : BOTTOM								LUGS SIZE : SEE ONE LINE DIAGRAM			
DESCRIPTION	CONNECTED LOAD (VA)			WIRE	BKR	PHASE	WIRE	CONNECTED LOAD (VA)			DESCRIPTION
EF-3	2106	2106	2106	-	20/3	1 • 2	20/3	3880	3880		EF-6
EF-4	2106	2106	2106	-	20/3	7 • 8	20/3	3880	3880		EF-7
EF-5	3880	3880	3880	-	20/3	13 • 14	20/3	3880	3880		EF-8
SPARE	-	-	-	-	20/3	19 • 20	20/3	3880	3880		EF-9
SPARE	-	-	-	-	20/3	21 • 22	20/3	-	-		WELDING RECEPTACLE
SF-1	7473	7473	7473	-	50/3	31 • 32	50/3	-	-		WELDING RECEPTACLE
SF-2	7473	7473	7473	-	50/3	37 • 38	20/3	-	-		SPARE
TOTALS:	23038	23038	23038					15520	15520	15520	
LIGHTING: RECEPTACLES: FIRST 10.0KVA		15.5	1.25	19.3	A	39	140.8	REFER TO MECHANICAL EQUIPMENT SCHEDULE FOR CONDUCTOR AND CONDUIT SIZES / QUANTITY			
REMAINING		5.8	1.00	5.8	B	39	140.8				
MOTORS: LARGEST		41.4	1.25	51.8	C	39	140.8				
REMAINING		659.6	1.00	659.6							
HEATING:		16.2	1.00	16.2							
MISCELLANEOUS:		532.7	1.00	532.7							
TOTALS:		117		122.5 (147.3A @480V)							

TYPE : SQUARE D NF SERIES		LOCATION ELECTRICAL ROOM PANEL PDP (SECTION 2)						VOLTAGE : 480/277V, 3Ø, 4W			
DIMENSIONS : 20"W X 5.75"D		THREE PHASE PANEL						MAINS : 100A MCB			
MOUNTING : SURFACE								A.I.C. RATING : 65,000			
PANEL FEED : BOTTOM								LUGS SIZE : SEE ONE LINE DIAGRAM			
DESCRIPTION	CONNECTED LOAD (VA)			WIRE	BKR	PHASE	WIRE	CONNECTED LOAD (VA)			DESCRIPTION
MEZZANINE LIGHTING	811	1344		-	20/1	1 • 2	20/1	4116	2352		PRODUCTION FLOOR LTG
BELOW MEZZ LIGHTING				-	20/1	3 • 4	20/1			1764	PRODUCTION FLOOR LTG
PRODUCTION FLOOR LTG				-	20/1	5 • 6	20/1				RECEIVING OFFICE LTG
LTG TIME CLOCK	277			-	20/1	7 • 8	20/1		580		RECEIVING OFFICE LTG
SPARE	-	-	-	-	20/1	9 • 10	20/1	-	-	-	SPARE
SPARE	-	-	-	-	20/1	11 • 12	20/1	-	-	-	SPARE
SPARE	-	-	-	-	20/1	13 • 14	20/1	-	-	-	SPARE
SPARE	-	-	-	-	20/1	15 • 16	20/1	-	-	-	SPARE
SPARE	-	-	-	-	20/1	17 • 18	20/1	-	-	-	SPARE
SPARE	-	-	-	-	20/1	19 • 20	20/1	-	-	-	SPARE
SPARE	-	-	-	-	20/1	21 • 22	20/1	-	-	-	SPARE
SPARE	-	-	-	-	20/1	23 • 24	20/1	-	-	-	SPARE
SPARE	-	-	-	-	20/1	25 • 26	20/1	-	-	-	SPARE
SPARE	-	-	-	-	20/1	27 • 28	20/1	-	-	-	SPARE
SPARE	-	-	-	-	20/1	29 • 30	20/1	-	-	-	SPARE
SPARE	-	-	-	-	20/1	31 • 32	20/1	-	-	-	SPARE
SPARE	-	-	-	-	20/1	33 • 34	20/1	-	-	-	SPARE
SPARE	-	-	-	-	20/1	35 • 36	20/1	-	-	-	SPARE
SPARE	-	-	-	-	20/1	37 • 38	20/1	-	-	-	SPARE
SPARE	-	-	-	-	20/1	39 • 40	20/1	-	-	-	SPARE
SPARE	-	-	-	-	20/1	41 • 42	20/1	-	-	-	SPARE
TOTALS:	1088	1424	4116					4696	2352	1764	
LIGHTING: RECEPTACLES: FIRST 10.0KVA		15.5	1.25	19.3	A	5.8	20.9	REFER TO ELECTRICAL DRAWING PACKAGE GENERAL NOTES (SHEET E1.1) CONDUCTORS AND CONDUIT SIZES / QUANTITY			
REMAINING		5.8	1.00	5.8	B	3.8	13.7				
MOTORS: LARGEST		41.4	1.25	51.8	C	5.9	20.9				
REMAINING		659.6	1.00	659.6							
HEATING:		16.2	1.00	16.2							
MISCELLANEOUS:		532.7	1.00	532.7							
TOTALS:		15.5		19.3 (23A @ 480V)							

TYPE : SQUARE D NF SERIES		LOCATION ELECTRICAL ROOM PANEL PDP (SECTION 2)						VOLTAGE : 480/277V, 3Ø, 4W			
DIMENSIONS : 20"W X 5.75"D		THREE PHASE PANEL						MAINS : FEED THROUGH LUGS			
MOUNTING : SURFACE								A.I.C. RATING : 65,000			
PANEL FEED : BOTTOM								LUGS SIZE : SEE ONE LINE DIAGRAM			
DESCRIPTION	CONNECTED LOAD (VA)			WIRE	BKR	PHASE	WIRE	CONNECTED LOAD (VA)			DESCRIPTION
SPARE	-	-	-	-	20/3	1 • 2	20/3	-	-	-	SPARE
SPARE	-	-	-	-	20/3	3 • 4	20/3	-	-	-	SPARE
SPARE	-	-	-	-	20/3	7 • 8	20/3	-	-	-	SPARE
SPACE	-	-	-	-	20/3	9 • 10	20/3	-	-	-	SPARE
SPACE	-	-	-	-	20/3	13 • 14	20/3	-	-	-	SPARE
SPACE	-	-	-	-	20/3	15 • 16	20/3	-	-	-	SPARE
SPACE	-	-	-	-	20/3	17 • 18	20/3	-	-	-	SPARE
SPACE	-	-	-	-	20/3	19 • 20	20/3	-	-	-	SPARE
SPACE	-	-	-	-	20/3	21 • 22	20/3	-	-	-	SPARE
SPACE	-	-	-	-	20/3	23 • 24	20/3	-	-	-	SPARE
SPACE	-	-	-	-	20/3	25 • 26	20/3	-	-	-	SPARE
SPACE	-	-	-	-	20/3	27 • 28	20/3	-	-	-	SPARE
SPACE	-	-	-	-	20/3	29 • 30	20/3	-	-	-	SPARE
SPACE	-	-	-	-	20/3	31 • 32	20/3	-	-	-	SPARE
SPACE	-	-	-	-	20/3	33 • 34	20/3	-	-	-	SPARE
SPACE	-	-	-	-	20/3	35 • 36	20/3	-	-	-	SPARE
SPACE	-	-	-	-	20/3	37 • 38	20/3	-	-	-	SPARE
SPACE	-	-	-	-	20/3	39 • 40	20/3	-	-	-	SPARE
SPACE	-	-	-	-	20/3	41 • 42	20/3	-	-	-	SPARE
TOTALS:	0	0	0					0	0	0	
LIGHTING: RECEPTACLES: FIRST 10.0KVA		15.5	1.25	19.3	A	0	0	REFER TO MECHANICAL EQUIPMENT SCHEDULE FOR CONDUCTOR AND CONDUIT SIZES / QUANTITY			
REMAINING		5.8	1.00	5.8	B	0	0				
MOTORS: LARGEST		41.4	1.25	51.8	C	0	0				
REMAINING		659.6	1.00	659.6							
HEATING:		16.2	1.00	16.2							
MISCELLANEOUS:		532.7	1.00	532.7							
TOTALS:		0		0 (0A @480V)							

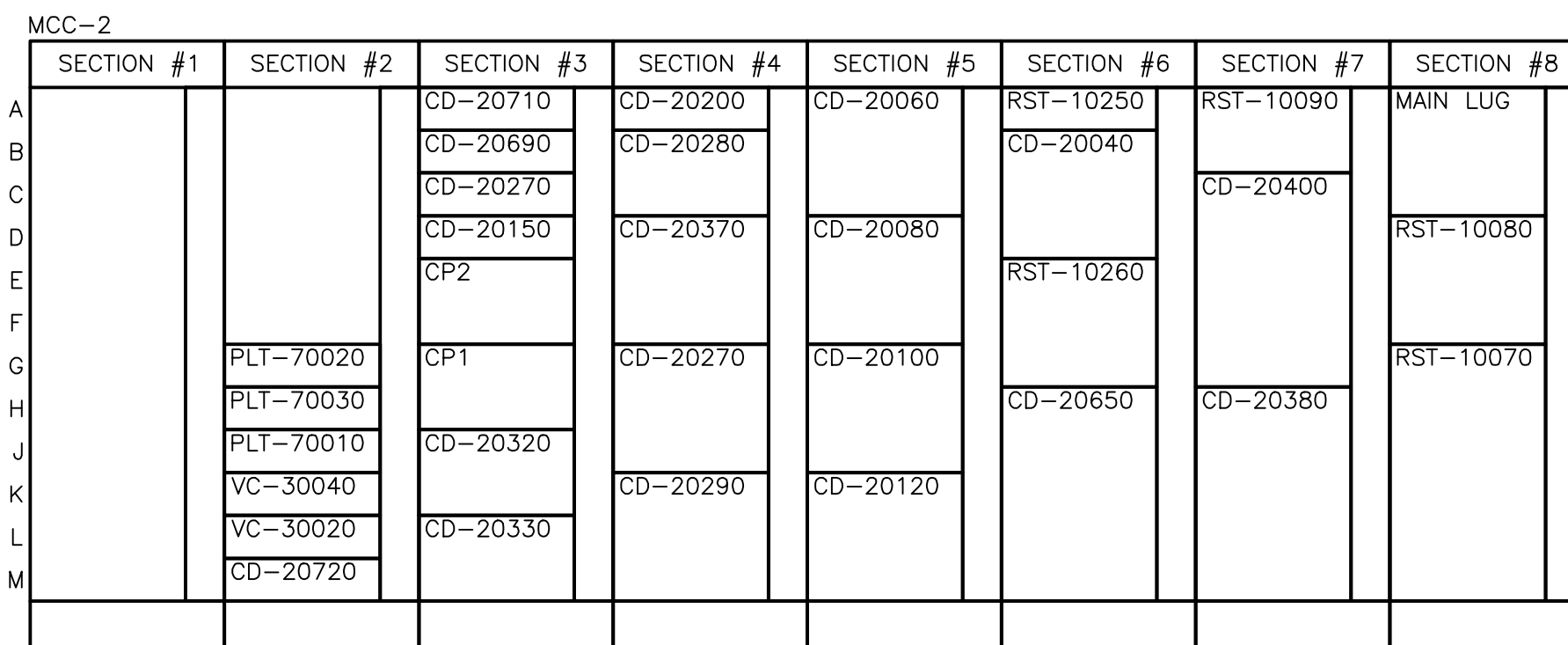
TYPE : SQUARE D NQDD SERIES		LOCATION ELECTRICAL ROOM PANEL LLPG						VOLTAGE : 120/208V, 3Ø, 4W			
DIMENSIONS : 20"W X 5.75"D		THREE PHASE PANEL						MAINS : 150A MCB			
MOUNTING : SURFACE								A.I.C. RATING : 10,000			
PANEL FEED : BOTTOM								LUGS SIZE : SEE ONE LINE DIAGRAM			
DESCRIPTION	CONNECTED LOAD (VA)			WIRE	BKR	PHASE	WIRE	CONNECTED LOAD (VA)			DESCRIPTION
ELECTRICAL RM RECEP	540			-	20/1	1 • 2	20/1	720			MEZZANINE RECEP
MEZZ OFFICE RECEP		720		-	20/1	3 • 4	20/1		1080		RECEIVING OFFICE RECEP
MECHANICAL RM RECEP			720	-	20/1	5 • 6	20/1			180	CP-1 RECEP
RECEIVING ELEC. RESTRIKE	240			-	20/1	7 • 8	20/1		180		RECEIVING COND RECEP
AC-1		1352		-	20/2	9 • 1					

MOTOR CONTROL CENTER "MCC-3"													
TYPE : ALLEN BRADLEY			VOLTAGE : 230V, 3Ø, 3W			MCC-3							
DIMENSIONS : SEE PLANS			MAINS : 600A			UNIT WIRING: NEMA CLASS 1, TYPE B							
ENCLOSURE : NEMA 1			A.I.C. RATING : 65,000			LUGS SIZE : REFER TO ONE LINE							
INCOMING FEED: TOP													
LINE NUMBER	DESCRIPTION	LOAD	STARTER	CONTACTOR	CONTROLS					KEY NOTES			
					NUMBER OF MOTORS	FULL LOAD AMPS	SIZE	TYPE	MAGNETIC BREAKER		SIZE	TYPE	THERMAL-BREAKER
PROVIDE THREE LINE NAMEPLATE													
LOCATION	EQUIPMENT	KEY											
1A	SPACE FOR NEMA SIZE #1												
1B	SPACE FOR NEMA SIZE #1												
1C	SPACE FOR NEMA SIZE #1												
1D	SPACE FOR NEMA SIZE #1												
1E	SPACE FOR NEMA SIZE #1												
1F	SPACE FOR NEMA SIZE #1												
1G	SPACE FOR NEMA SIZE #1												
1H	SPACE FOR NEMA SIZE #1												
1J	SPACE FOR NEMA SIZE #1												
1K	SPACE FOR NEMA SIZE #1												
1L	SPACE FOR NEMA SIZE #1												
1M	SPACE FOR NEMA SIZE #1												
2A	SPACE FOR NEMA SIZE #1												
2B	SPACE FOR NEMA SIZE #1												
2C	SPACE FOR NEMA SIZE #1												
2D	SPACE FOR NEMA SIZE #1												
2E	PACKAGING RM / OVERCAPPER /VC-30250	1 6 00	FVNR										
2G	PACKAGING RM / STRETCHWRAPPER /VC-30440	36			YES								
2J	PACKAGING RM / HEAT TUNNEL /VC-30300	70			YES								
2L	PACKAGING RM / PALLETIZER /VC-30370	56			YES								
3B	PACKAGING RM / SHRINK WRAPPER /VC-30290	95			YES								
3D	PACKAGING RM / LID MAGAZINE /VC-30260	1 2.2 00	FVNR										
3F	PACKAGING RM / CONV. TO CODE /VC-30280	1 4.2 00	FVNR										
3H	PACKAGING RM / CASE SPIRAL ELEV./VC-30330	1 6 00	FVNR										
3K	PACKAGING RM / CASE CONV. ACC./VC-30360	1 54 3	FVNR										
4A	600A MAIN CIRCUIT BREAKER												
4E	PACKAGING RM / CASE TURNER /VC-30310	1 6.8 0	FVNR										
4G	PACKAGING RM / FULL CASE CONV./FCC PANEL	9.6			YES								
4J	PACKAGING RM / FULL CASE CONV./VC-30340	1 9.6 0	FVNR										
4L	PACKAGING RM / TREY FORMER /VC-30270	1 22 1	FVNR										
MAXIMUM MCC CAPACITY: 499 KVA 600 AMPS			REFER TO SPECIFICATIONS FOR ADDITIONAL REQUIREMENTS.										
ESTIMATED CONNECTED LOAD: 313 KVA 377 AMPS			VFD - VARIABLE FREQUENCY DRIVE FVNR - FULL VOLTAGE NON-REVERSING										



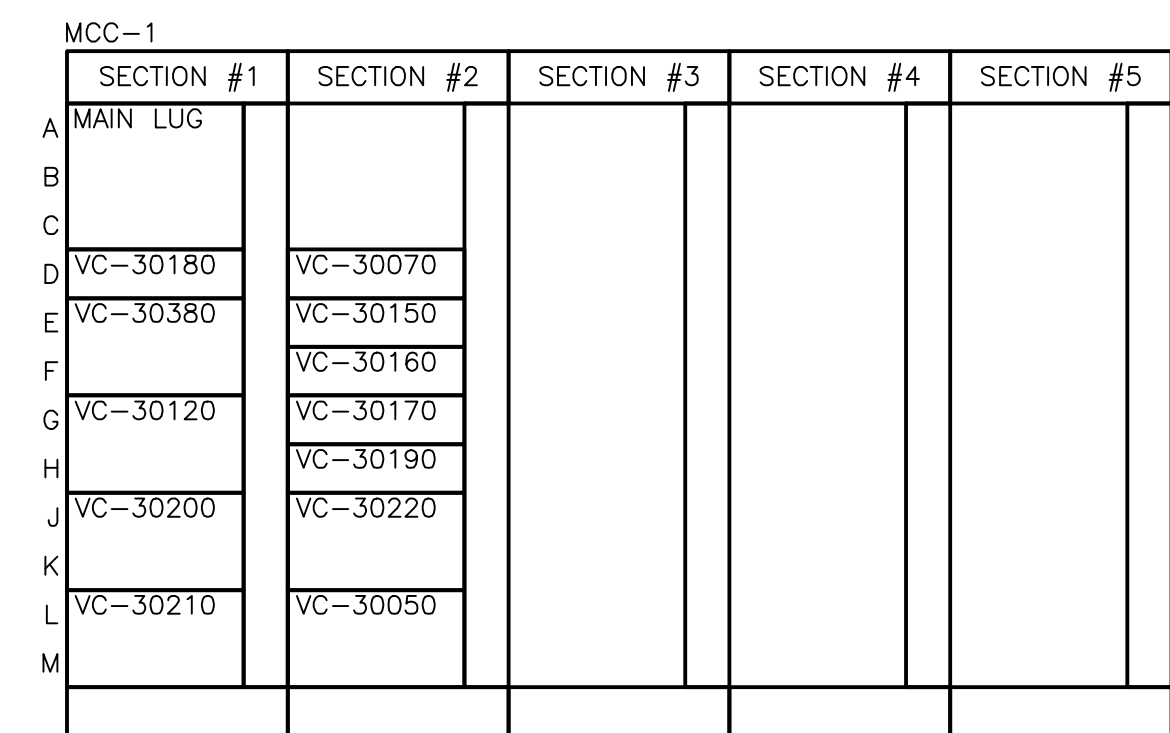
3 MCC-3 ELEVATION
E5.3 NTS

MOTOR CONTROL CENTER "MCC-2"													
TYPE : ALLEN BRADLEY			VOLTAGE : 480V, 3Ø, 3W			MCC-2							
DIMENSIONS : SEE PLANS			MAINS : 1200A			UNIT WIRING: NEMA CLASS 1, TYPE B							
ENCLOSURE : NEMA 1			A.I.C. RATING : 65,000			LUGS SIZE : REFER TO ONE LINE							
INCOMING FEED: TOP													
LINE NUMBER	DESCRIPTION	LOAD	STARTER	CONTACTOR	CONTROLS					KEY NOTES			
					NUMBER OF MOTORS	FULL LOAD AMPS	SIZE	TYPE	MAGNETIC BREAKER		SIZE	TYPE	THERMAL-BREAKER
PROVIDE THREE LINE NAMEPLATE													
LOCATION	EQUIPMENT	KEY											
1A	SPACE FOR NEMA SIZE #1												
1B	SPACE FOR NEMA SIZE #1												
1C	SPACE FOR NEMA SIZE #1												
1D	SPACE FOR NEMA SIZE #1												
1E	SPACE FOR NEMA SIZE #1												
1F	SPACE FOR NEMA SIZE #1												
1G	SPACE FOR NEMA SIZE #1												
1H	SPACE FOR NEMA SIZE #1												
1J	SPACE FOR NEMA SIZE #1												
1K	SPACE FOR NEMA SIZE #1												
1L	SPACE FOR NEMA SIZE #1												
1M	SPACE FOR NEMA SIZE #1												
2A	SPACE FOR NEMA SIZE #1												
2B	SPACE FOR NEMA SIZE #1												
2C	SPACE FOR NEMA SIZE #1												
2D	SPACE FOR NEMA SIZE #1												
2E	SPACE FOR NEMA SIZE #1												
2F	SPACE FOR NEMA SIZE #1												
2G	PROCESS ROOM / VACUUM SYSTEM /PLT-70020	1 31 3	FVNR							1			
2H	PROCESS ROOM / VACUUM SYSTEM /PLT-70030	1 31 3	FVNR										
2J	PROCESS ROOM /VENT. FILTER/REC./PLT-70010	1 11 1	FVNR										
2K	PROCESS ROOM /CAN LINE RECLAIM/VC-30040	1 7.6 0	FVNR										
2L	PROCESS ROOM / HOMOGENIZER /VC-30020	1 2.1 00	FVNR										
2M	PROCESS ROOM /CAN FILLER VAC./CD-20720	1 14 1	FVNR										
3A	PROCESS ROOM /CAN FILLER VAC./CD-20710	1 14 1	FVNR										
3B	PROCESS ROOM /CAN FILLER FILTER/CD-20690	1 2.1 00	FVNR										
3C	PROCESS ROOM /GRINDER F/R ROT./CD-20270	1 2.1 00	FVNR										
3D	PROCESS ROOM /GRINDER REC. ROT./CD-20150	1 2.1 00	FVNR										
3E	PROCESS ROOM / DEGAS BIN CP2 /CP2	16			YES								
3G	PROCESS ROOM / DEGAS BIN CP1 /CP1	73			YES								
3J	PROCESS ROOM / GRINDER CHILLER /CD-20320	1 17.2			YES								
3L	PROCESS ROOM / GRINDER CHILLER /CD-20330	1 17.2			YES								
4A	PROCESS ROOM / GROUND REWORK /CD-20200	1 2.1 00	FVNR										
4B	PROCESS ROOM / GRINDER VACUUM /CD-20280	1 40 3	FVNR										
4D	PROCESS ROOM / GROUND REWORK /CD-20370	1 2.1	VFD										
4G	PROCESS ROOM / GRINDER /CD-20270	1 152			YES								
4K	PROCESS ROOM / GRINDER /CD-20290	1 152			YES								
5A	PROCESS ROOM /WR BIN DISCHARGE/CD-20060	1 2.1	VFD										
5D	PROCESS ROOM /WR BIN DISCHARGE/CD-20080	1 2.1	VFD										
5G	PROCESS ROOM /WR BIN DISCHARGE/CD-20100	1 2.1	VFD										
5K	PROCESS ROOM /WR BIN DISCHARGE/CD-20120	1 2.1	VFD										
6A	PROCESS ROOM / WR SURGE BIN /RST-10250	1 7.6 0	FVNR										
6B	PROCESS ROOM / WB RWORK ROT./CD-20040	1 2.1	VFD										
6E	PROCESS ROOM / WR SRGIN F/R /RST-10260	1 2.1	VFD										
6H	PROCESS ROOM / DEGAS BINS DIS./CD-20650	1 34	VFD										
7A	PROCESS ROOM / ROASTED BLOWER /RST-10090	1 52 3	FVNR										
7C	PROCESS ROOM / DEGAS BINS TUB./CD-20400	1 34	VFD										
7H	PROCESS ROOM /GRINDER DIS. TUB./CD-20380	1 34	VFD										
8A	MAIN LUGS												
8D	PROCESS ROOM /ROASTER DIS. ROT./RST-10080	1 2.1	VFD										
8G	PROCESS ROOM / WB DRAG CON. /RST-10070	1 40	VFD										
MAXIMUM MCC CAPACITY: 998 KVA 1200 AMPS			REFER TO SPECIFICATIONS FOR ADDITIONAL REQUIREMENTS.										
ESTIMATED CONNECTED LOAD: 669 KVA 805 AMPS			VFD - VARIABLE FREQUENCY DRIVE FVNR - FULL VOLTAGE NON-REVERSING										



2 MCC-2 ELEVATION
E5.3 NTS

MOTOR CONTROL CENTER "MCC-1"													
TYPE : ALLEN BRADLEY			VOLTAGE : 480V, 3Ø, 3W			MCC-1							
DIMENSIONS : SEE PLANS			MAINS : 800A			UNIT WIRING: NEMA CLASS 1, TYPE B							
ENCLOSURE : NEMA 1			A.I.C. RATING : 65,000			LUGS SIZE : REFER TO ONE LINE							
INCOMING FEED: TOP													
LINE NUMBER	DESCRIPTION	LOAD	STARTER	CONTACTOR	CONTROLS					KEY NOTES			
					NUMBER OF MOTORS	FULL LOAD AMPS	SIZE	TYPE	MAGNETIC BREAKER		SIZE	TYPE	THERMAL-BREAKER
PROVIDE THREE LINE NAMEPLATE													
LOCATION	EQUIPMENT	KEY											
1A	MAIN LUGS												
1D	PROCESS ROOM /CAN END CRIMPER/VC-30180	1 11 1	FVNR										
1E	PROCESS ROOM /FULL PALLET CONV./VC-30380	17			YES								
1G	PROCESS ROOM / FULL CAN TABLE /VC-30120	102			YES								
1J	PROCESS ROOM / VAC. CAN CLOSER /VC-30200	1 9.4 3	FVNR										
1L	PROCESS ROOM / VAC. CAN CLOSER /VC-30210	1 9.4 3	FVNR										
2A	SPACE FOR NEMA SIZE #1												
2B	SPACE FOR NEMA SIZE #1												
2C	SPACE FOR NEMA SIZE #1												
2D	PROCESS ROOM / AIR TWIST CAN /VC-30070	1 4.8 0	FVNR										
2E	PROCESS ROOM / ACC TABLE /VC-30150	1 4.8 0	FVNR										
2F	PROCESS ROOM / SIDE GRIP ELEV./VC-30160	1 4.8 0	FVNR										
2G	PROCESS ROOM / SIDE GRIP ELEV./VC-30170	1 4.8 0	FVNR										
2H	PROCESS ROOM / CAN CODER /VC-30190	1 11 1	FVNR										
2J	PROCESS ROOM / CAN LABELER /VC-30220	1 40			YES								
2L	PROCESS ROOM / DEPALLETTIZER /VC-30050	1 100			YES								
3A	SPACE FOR NEMA SIZE #1												
3B	SPACE FOR NEMA SIZE #1												
3C	SPACE FOR NEMA SIZE #1												
3D	SPACE FOR NEMA SIZE #1												
3E	SPACE FOR NEMA SIZE #1												
3F	SPACE FOR NEMA SIZE #1												
3G	SPACE FOR NEMA SIZE #1												
3H	SPACE FOR NEMA SIZE #1												
3J	SPACE FOR NEMA SIZE #1												
3L	SPACE FOR NEMA SIZE #1												
3M	SPACE FOR NEMA SIZE #1												
4A	SPACE FOR NEMA SIZE #1												
4B	SPACE FOR NEMA SIZE #1												
4C	SPACE FOR NEMA SIZE #1												
4D	SPACE FOR NEMA SIZE #1												
4E	SPACE FOR NEMA SIZE #1												
4F	SPACE FOR NEMA SIZE #1												
4G	SPACE FOR NEMA SIZE #1												
4H	SPACE FOR NEMA SIZE #1												
4J	SPACE FOR NEMA SIZE #1												
4L	SPACE FOR NEMA SIZE #1												
4M	SPACE FOR NEMA SIZE #1												
5A	SPACE FOR NEMA SIZE #1												
5B	SPACE FOR NEMA SIZE #1												
5C	SPACE FOR NEMA SIZE #1												
5D	SPACE FOR NEMA SIZE #1												
5E	SPACE FOR NEMA SIZE #1												
5F	SPACE FOR NEMA SIZE #1												
5G	SPACE FOR NEMA SIZE #1												
5H	SPACE FOR NEMA SIZE #1												
5J	SPACE FOR NEMA SIZE #1												
5L	SPACE FOR NEMA SIZE #1												
5M	SPACE FOR NEMA SIZE #1												
MAXIMUM MCC CAPACITY: 998 KVA 1200 AMPS			REFER TO SPECIFICATIONS FOR ADDITIONAL REQUIREMENTS.										
ESTIMATED CONNECTED LOAD: 669 KVA 805 AMPS			VFD - VARIABLE FREQUENCY DRIVE FVNR - FULL VOLTAGE NON-REVERSING										



1 MCC-1 ELEVATION
E5.3 NTS

GENERAL NOTES

- REFER TO DRAWING E1.1 FOR ELECTRICAL DRAWING PACKAGE GENERAL NOTES.
- MCC'S ARE SHOWN FOR REFERENCE ONLY. MCC'S PROVIDED BY OTHERS.

KEY NOTES

- ◇ SPACE SAVING NEMA FVNR MOTOR STARTER



STATEMENT OF SUPERVISION
THESE PLANS AND SPECIFICATIONS HAVE BEEN PREPARED UNDER MY SUPERVISION AND TO THE BEST OF MY KNOWLEDGE COMPLY WITH ALL LOCAL, STATE, AND FEDERAL REQUIREMENTS.

ISSUE DATE: 02/27/14

DEPT. APPROVAL	DATE	DRAWN BY	DATE
PROJECT APPROVAL	DATE	DEL	01/07/2014
CLIENT APPROVAL	DATE	CHECKED BY	DATE
RESIDENT ENGR. APPROVAL			