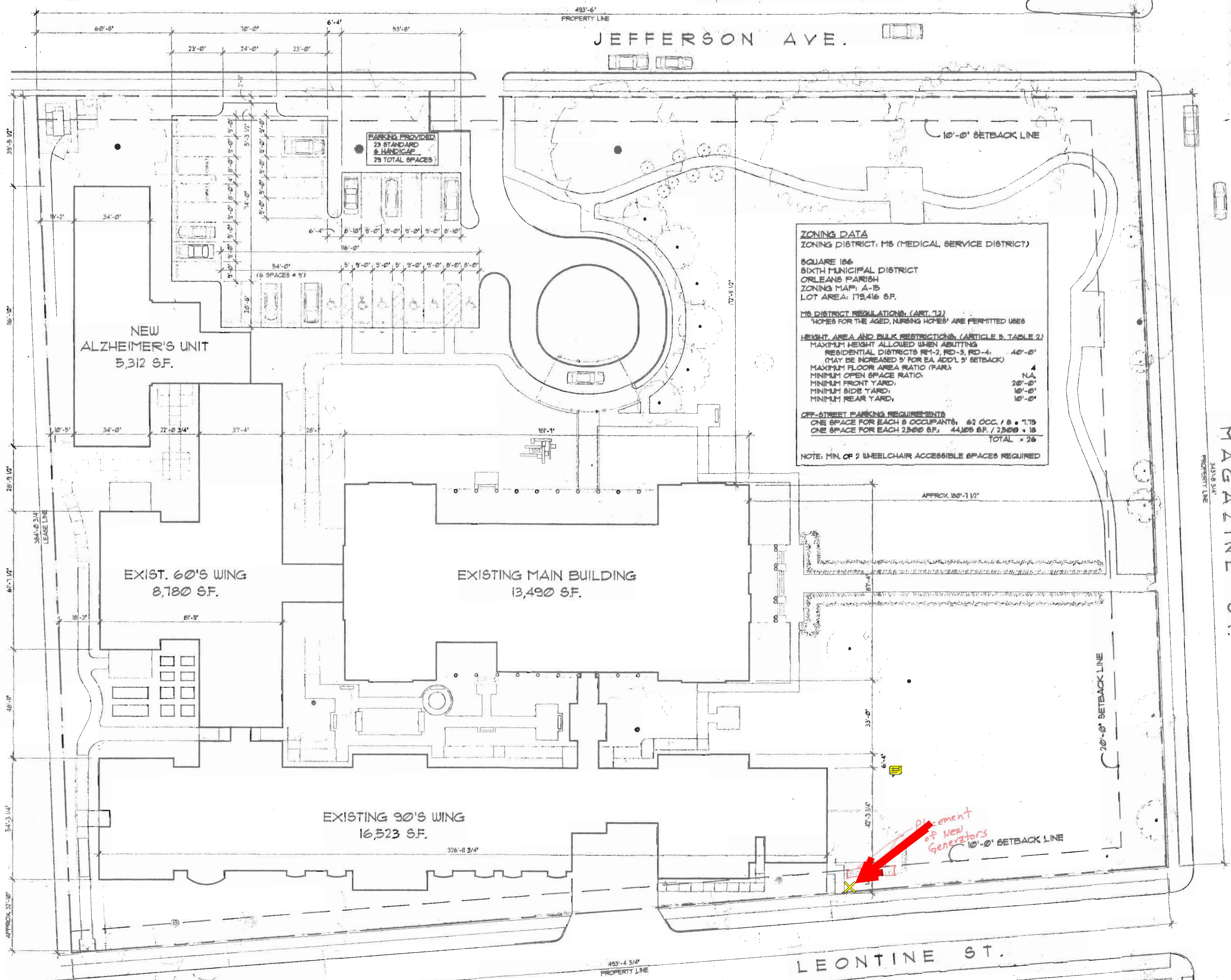


THIS PROPERTY OWNED BY
POYDRAS HOME AND LEASED BY
NO. LAWN AND TENNIS CLUB
(NO SETBACK REQUIRED)



ZONING DATA
 ZONING DISTRICT: M6 (MEDICAL SERVICE DISTRICT)
 SQUARE 186
 SIXTH MUNICIPAL DISTRICT
 ORLEANS PARISH
 ZONING MAP: A-15
 LOT AREA: 179,416 SF.

M6 DISTRICT REGULATIONS: (ART. 12)
 'HOMES FOR THE AGED, NURSING HOMES' ARE PERMITTED USES

HEIGHT, AREA AND BULK RESTRICTIONS: (ARTICLE 8, TABLE 2)

MAXIMUM HEIGHT ALLOWED WHEN ADJUTING RESIDENTIAL DISTRICTS RM-2, RD-3, RD-4, (MAY BE INCREASED 5' FOR EA. ADD'L 5' SETBACK)	40'-0"
MAXIMUM FLOOR AREA RATIO (FAR)	4
MINIMUM OPEN SPACE RATIO	N/A
MINIMUM FRONT YARD	20'-0"
MINIMUM SIDE YARD	10'-0"
MINIMUM REAR YARD	10'-0"

OFF-STREET PARKING REQUIREMENTS
 ONE SPACE FOR EACH 8 OCCUPANTS: 62 OCC. / 8 = 7.75
 ONE SPACE FOR EACH 2,500 SF: 44,100 SF. / 2,500 = 18
 TOTAL = 26

NOTE: MIN. OF 2 WHEELCHAIR ACCESSIBLE SPACES REQUIRED

e. sean
mcnaughton
architects

Timbers Office Park
 Suite 3012
 3520 Gen. de Gaulle Dr.
 New Orleans, LA 70114
 504.368.5355
 504.361.8830 FAX
 www.seanarchitects.com

No.	Date	Revision
1	5/23/00	SUPPLEMENTAL DRAWING - (RESPONSE TO SAFETY & PERMIT'S REVIEW LETTER)

Alzheimers Special Care Unit
 Addition to
POYDRAS HOME

New Orleans, Louisiana

Project No.:
9935-A

Date: 23 MAY, 2000
 Drawn: FHG
 Checked: EM

Sheet Name:
 FLOT
 PLAN

Sheet No.:

