



Client vetter

Shipping

Project Name: Hymel Residence

Job#:

Quantity 1 (3pcs.)

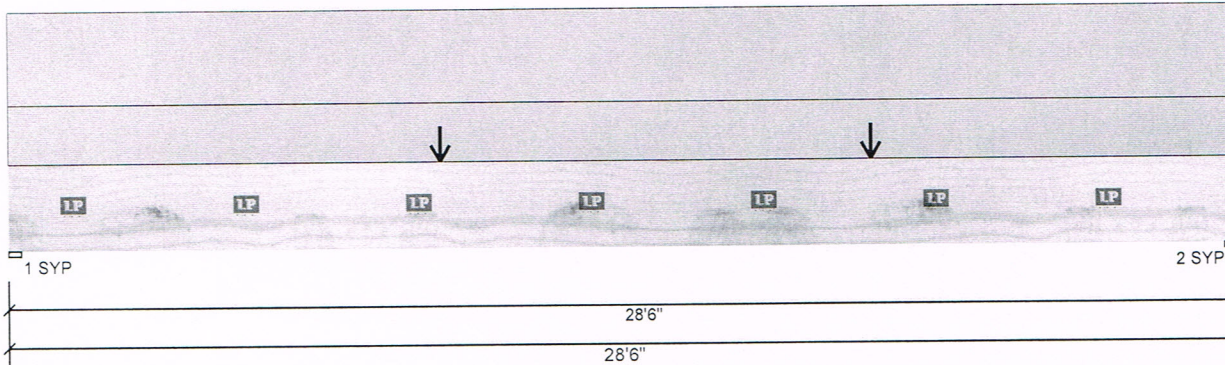
Description:

center beam under main wall LP LVL 2950F-2.0E 1.750" X 24.000" 3-Ply - PASSED

4/25/2014 12:18 PM

Page 1 of 1

Designer: CHRISTINE HERTZ



Type: Girder
 Plies: 3
 Moisture Condition: Dry
 Deflection LL: 360
 Deflection TL: 240
 Importance: Normal
 Temperature: Temp <= 100°F

Application: Floor
 Design Method: ASD
 Building Code: IBC 2012 / IRC
 Load Sharing: Yes
 Deck: Not Checked
 Vibration: Not Checked

Reactions

Brg	Live	Dead	Snow	Wind	Const
1	2453	4021	0	0	0
2	2727	4206	0	0	0

Bearings

Bearing	Input Length	In Analysis	Cap. React D/L lb	Total	Ld. Case	Ld. Comb.
1 - SYP	3.500"	2.250"	97% 4021 / 2453	6474	L	D+L
2 - SYP	3.500"	2.500"	93% 4206 / 2727	6933	L	D+L

Analysis	Actual	Location	Allowed	Capacity	Load Comb.	Ld. Case
Moment	55921 ft-lb	12'10 3/8"	87532 ft-lb	0.639 (64%)	D+L	L
Shear	6577 lb	26'3 3/4"	24360 lb	0.270 (27%)	D+L	L
LL Defl inch	0.284 (L/1186)	14'3 5/8"	0.937 (L/360)	0.300 (30%)	L	L
TL Defl inch	0.670 (L/504)	14'3 1/2"	1.406 (L/240)	0.480 (48%)	D+L	L

Design OK.

Design Notes

- Girders are designed to be supported on the bottom edge only.
- Multiple plies must be fastened together as per manufacturer's details.
- Top loads must be supported equally by all plies.
- Top unbraced.
- Bottom unbraced.

ID	Load Type	Location	Trib Width	Side	Dead	Live	Snow	Wind	Const.	Comments
1	Uniform			Top	0 PLF	0 PLF	0 PLF	0 PLF	0 PLF	
2	Uniform			Top	0 PLF	0 PLF	0 PLF	0 PLF	0 PLF	
3	Uniform			Top	50 PLF	0 PLF	0 PLF	0 PLF	0 PLF	
4	Uniform			Top	80 PLF	0 PLF	0 PLF	0 PLF	0 PLF	
5	Point	10-0-0		Top	1757 lb	2590 lb	0 lb	0 lb	0 lb	
6	Point	20-0-0		Top	1757 lb	2590 lb	0 lb	0 lb	0 lb	
	Self Weight				36 PLF					

Notes

Calculated Structured Designs is responsible only of the structural adequacy of this component based on the design criteria and loadings shown. It is the responsibility of the customer and/or the contractor to ensure the component suitability of the intended application, and to verify the dimensions and loads.

Lumber

- Dry service conditions, unless noted otherwise
- LVL not to be treated with fire retardant or

corrosive chemicals

Handling & Installation

- LVL beams must not be cut or drilled
- Refer to manufacturer's product information regarding installation requirements, multi-ply fastening details, beam strength values, and code approvals
- Damaged Beams must not be used
- Design assumes top edge is laterally restrained
- Provide lateral support at bearing points to avoid lateral displacement and rotation

- For flat roofs provide proper drainage to prevent ponding

CEDAR CREEK
 8173 HWY 165 NORTH, LA
 USA
 71201
 504-650-2144