

NOTES

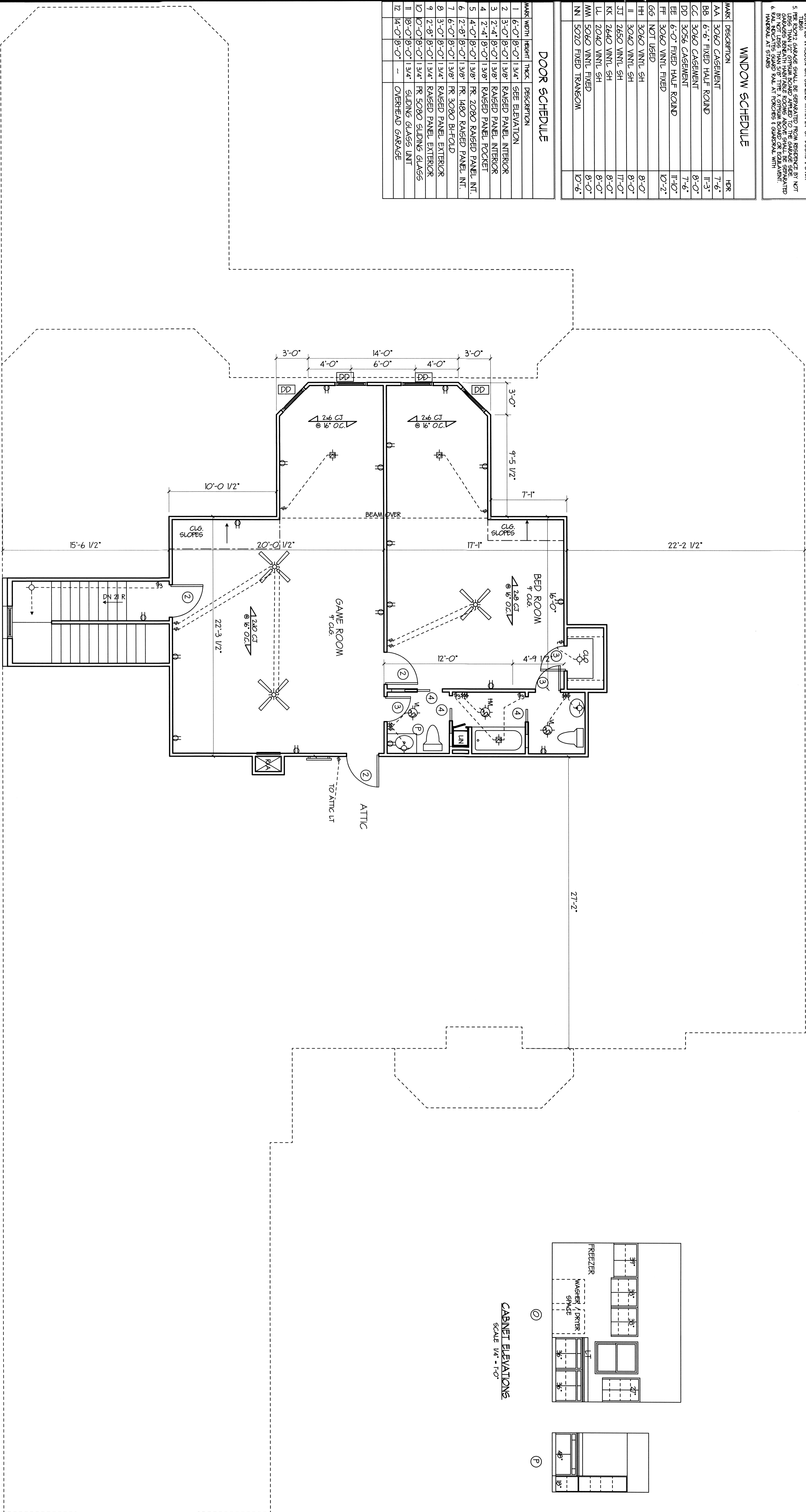
1. CONSTRUCTION SHALL SELECT WINDOW & DOOR PRODUCTS MEETING THE ENERGY EFFICIENCY REQUIREMENTS OF THE BUILDING CODE SPECIFIED IN THIS CONTRACT.
2. WINDOW & DOOR PRODUCTS SHALL BE SUPPLIED BY THE MANUFACTURER'S REPRESENTATIVE.
3. WINDOW & DOOR PRODUCTS SHALL BE INSTALLED IN ACCORDANCE WITH THE MANUFACTURER'S INSTALLATION INSTRUCTIONS.
4. WINDOW & DOOR PRODUCTS SHALL BE INSTALLED IN ACCORDANCE WITH THE BUILDING CODE REQUIREMENTS.
5. THE ENERGY EFFICIENCY REQUIREMENTS SHALL BE SEPARATED FROM RESISTANCE BY NOT LESS THAN THE ENERGY EFFICIENCY REQUIREMENTS OF THE BUILDING CODE.
6. WINDOW & DOOR PRODUCTS SHALL BE INSTALLED IN ACCORDANCE WITH THE BUILDING CODE REQUIREMENTS.

WINDOW SCHEDULE

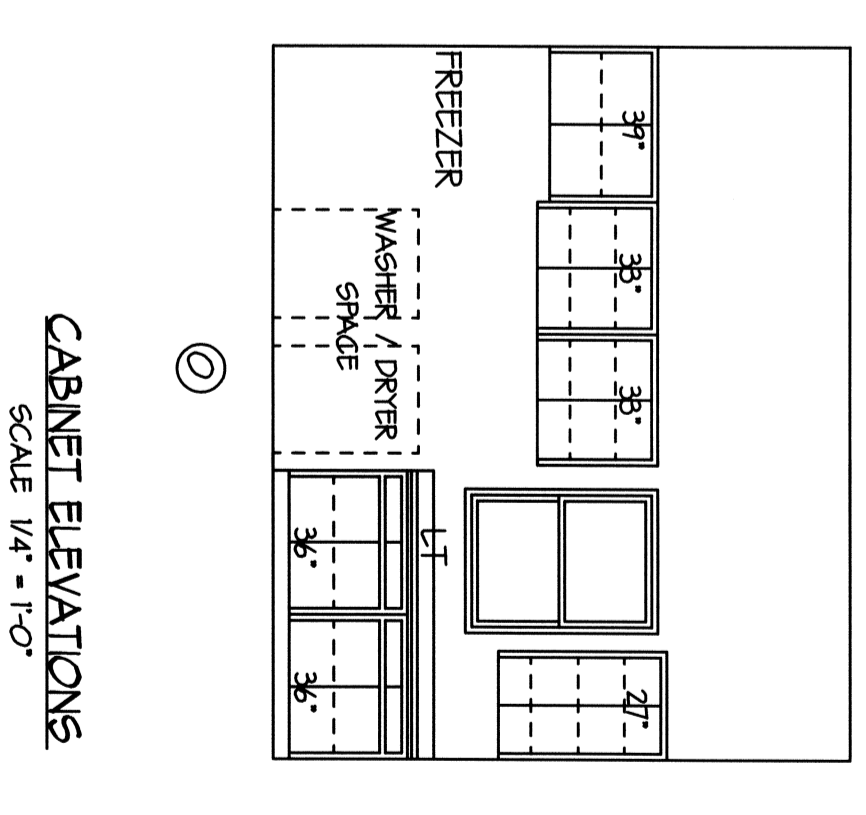
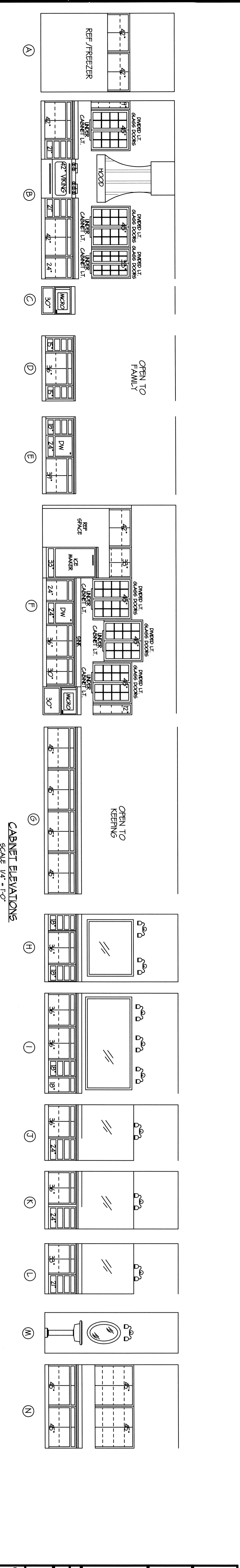
MARK	DESCRIPTION	HR
AA	3060 CASSEMENT	7-6
BB	6-6 FIXED HALF ROUND	11-3
CC	3060 CASSEMENT	8-0
DD	3066 CASSEMENT	7-6
EE	6-0 FIXED HALF ROUND	11-0
FF	3060 VINYL FIXED	10-2
GG	NOT USED	
HH	3060 VINYL SH	8-0
II	3060 VINYL SH	8-0
JJ	2650 VINYL SH	17-0
KK	2660 VINYL SH	8-0
LL	2060 VINYL SH	8-0
MM	5020 VINYL FIXED	8-0
NN	5020 FIXED TRANSCOM	10-6

DOOR SCHEDULE

MARK	WIDTH	HEIGHT	THICK	DESCRIPTION
1	6'-0"	8'-0"	1 3/4"	SEE ELEVATION
2	3'-0"	8'-0"	1 3/8"	RAISED PANEL INTERIOR
3	2'-4"	8'-0"	1 3/8"	RAISED PANEL INTERIOR
4	2'-4"	8'-0"	1 3/8"	RAISED PANEL POCKET
5	4'-0"	8'-0"	1 3/8"	RR 2090 RAISED PANEL INT.
6	2'-8"	8'-0"	1 3/8"	RR 1890 RAISED PANEL INT.
7	6'-0"	8'-0"	1 3/8"	RR 3080 BIFOLD
8	3'-0"	8'-0"	1 3/4"	RAISED PANEL EXTERIOR
9	2'-8"	8'-0"	1 3/4"	RAISED PANEL EXTERIOR
10	0'-0"	8'-0"	1 3/4"	RR 5080 SLIDING GLASS
11	8'-0"	8'-0"	1 3/4"	SLIDING GLASS UNIT
12	14'-0"	8'-0"	-	OVERHEAD GARAGE



2ND LEVEL FLOOR PLAN
SCALE 1/4" = 1'-0"



2ND LEVEL FLOOR PLAN

DESIGNER: J.C. & PATSY HYMEL
LOT 26, LAKESHORE ESTATES
ST. TAMMANY PARISH, LA

DATE: 5-16-15

Design Tech Residential Planners, Inc.
COVINGTON, 985-871-7211 SLIDELL, 985-847-0600

CODE	LIVING	ABEILLE R.	INDEX
A4	6289	8254	9970
DESIGNED BY	DWH	KOW	

© 2015 Design Tech Residential Planners, Inc. ALL RIGHTS RESERVED.
EMAIL: hns@designtech.com