

CIVIL - STRUCTURAL GENERAL NOTES

- THE ARCHITECTURAL, MECHANICAL, ELECTRICAL, CIVIL, & LANDSCAPE DRAWINGS & SPECIFICATIONS FORM A PART OF THESE DWGS & SHOULD BE USED ACCORDINGLY.
- SEE SPECIFICATIONS FOR INFORMATION NOT SHOWN ON DRAWINGS.
- CONTRACTOR TO VERIFY ALL DIMENSIONS AND CONDITIONS IN FIELD PRIOR TO FABRICATION AND CONSTRUCTION. ALL DIMENSIONS AND CONDITIONS TYPING INTO OR GOVERNED BY EXISTING OR PREVIOUSLY PHASED CONSTRUCTION ARE APPROXIMATE AND ARE NOT CLAIMED TO BE CORRECT. ALL SUCH DIMENSIONS AND CONDITIONS SHALL BE FIELD VERIFIED BY THE CONTRACTOR PRIOR TO FIELD DRAWINGS AND THE PREPARATION OF SHOP DRAWINGS. IF CONDITIONS AND DIMENSIONS VARY FROM THOSE SHOWN, THE CONTRACTOR SHALL NOTIFY THE ARCHITECT IMMEDIATELY.
- CONCRETE: (SEE SPECS. FOR ADDL. INFORMATION)
 - 4000 PSI 28 DAY COMP. STRENGTH (NORMAL WEIGHT) U.N.O.
 - COORDINATE REQUIREMENTS AT ALL EXPOSED-TO-VIEW CONCRETE WITH ARCH. AND LANDSCAPE DOCS.
 - ALL PUMPED CONCRETE MUST CONTAIN SUPERPLASTICIZER.
 - ALL CONCRETE EXPOSED-TO-VIEW SHALL CONTAIN SHRINKAGE COMPENSATING MINERAL ADMIXTURE (50% COMPENSATING).
 - PROVIDE SPECIFIED WATERPROOFING ADMIXTURE AT ALL CONCRETE AT THE MAIN ENTRY (GALVEZ ST.) WATER FEATURE.
- ALL CONCRETE TO CONFORM W/ THE LATEST A.C.I. BUILDING CODE REQUIREMENTS FOR REINFORCED CONCRETE. (ACI-318)
 - DESIGN OF CONCRETE MIXES, AND PLACEMENT AND CURING PROCEDURES ARE TO BE PERFORMED BY THE CONTRACTOR IN A MANNER THAT WILL MINIMIZE SHRINKAGE CRACKING OF THE SLABS. REINFORCING STEEL MAY BE ADDED TO THE SLAB AT THE CONTRACTOR'S OPTION. THE CONTRACTOR SHALL REPAIR SLABS WITH SHRINKAGE CRACKS DESIGNATED AS UNACCEPTABLE BY THE ARCHITECT WITH NO ADDITIONAL COST TO THE CONTRACT.
- FOR GRADE BEAMS, USE 4000 PSI CONCRETE WEDGES FOR REINFORCING STEEL SUPPORTS (BRICK OR MASONRY BLOCK IS NOT ACCEPTABLE). SLAB REINFORCING TO BE SUPPORTED BY SAND CHAIRS @ 48" O.C. MAX. E.W.
- SECTIONS DO NOT INDICATE ALL CONCRETE REINFORCING. CHECK SCHEDULES AND PLAN NOTES FOR BEAM, WALL AND SLAB REINFORCING.
- POUR EXTERIOR, PILE SUPPORTED SLAB AREAS ON POLYETHYLENE (6 MIL.) OVER COMPACTED FILL (EXCLUDING WATER FEATURE SLAB). PROVIDE 15 MIL. POLYETHYLENE VAPOR BARRIER UNDER WATER FEATURE SLAB.
- ALL REINFORCING STEEL TO CONFORM WITH REQUIREMENTS OF A.S.T.M. A-615 GRADE 60.
- PROVIDE REINFORCING BARS AROUND ALL OPENINGS 8" OR GREATER IN SLABS AS SHOWN ON THE DRAWINGS.
- PROVIDE BAR SUPPORTS AND SPACERS IN ACCORDANCE WITH REQUIREMENTS OF A.C.I. 315 UNLESS NOTED OTHERWISE.
- UNLESS SPECIFICALLY INDICATED OTHERWISE NO PIPING OR UTILITIES SHALL PASS THRU BEAMS OR PILE CAPS WITHOUT THE PERMISSION OF THE ARCHITECT.
- CONSTRUCTION DEWATERING

THE CONTRACTOR SHALL DETERMINE THE EXTENT OF CONSTRUCTION DEWATERING REQUIRED FOR THE EXCAVATION. PROVIDE ADEQUATE DRAINAGE TO DRAIN SURFACE WATER AWAY FROM THE CONSTRUCTION AREA. SEE SPECIFICATIONS FOR ADDITIONAL INFORMATION. MOTORIZED EXCAVATION SHALL NOT BE ALLOWED ON EXPOSED CLAY SURFACES WHEN WET.

THE GENERAL CONTRACTOR SHALL SUBMIT ACTUAL WEIGHTS OF EQUIPMENT TO BE USED IN THE PROJECT TO THE ARCHITECT FOR VERIFICATION OF LOADS USED IN THE DESIGN, AND SHALL REPORT ANY CHANGES IN LOCATION, NUMBER OF PIECES, AND WEIGHTS OF EQUIPMENT AS SHOWN ON THE MECHANICAL/ELECTRICAL PLUMBING DRAWINGS AT LEAST TWO WEEKS PRIOR TO FABRICATION AND CONSTRUCTION OF THE SUPPORTING STRUCTURE.
- TYPICAL DETAILS

DETAILS LABELED "TYPICAL DETAILS" ON THE DRAWINGS SHALL APPLY TO ALL SITUATIONS OCCURRING ON THE PROJECT THAT ARE THE SAME OR SIMILAR TO THOSE SPECIFICALLY DETAILED. SUCH DETAILS SHALL APPLY WHETHER OR NOT THEY ARE KEYS IN AT EACH LOCATION. QUESTIONS REGARDING APPLICABILITY OF TYPICAL DETAILS SHALL BE DETERMINED BY THE ENGINEER.
- DRAWING CONFLICTS

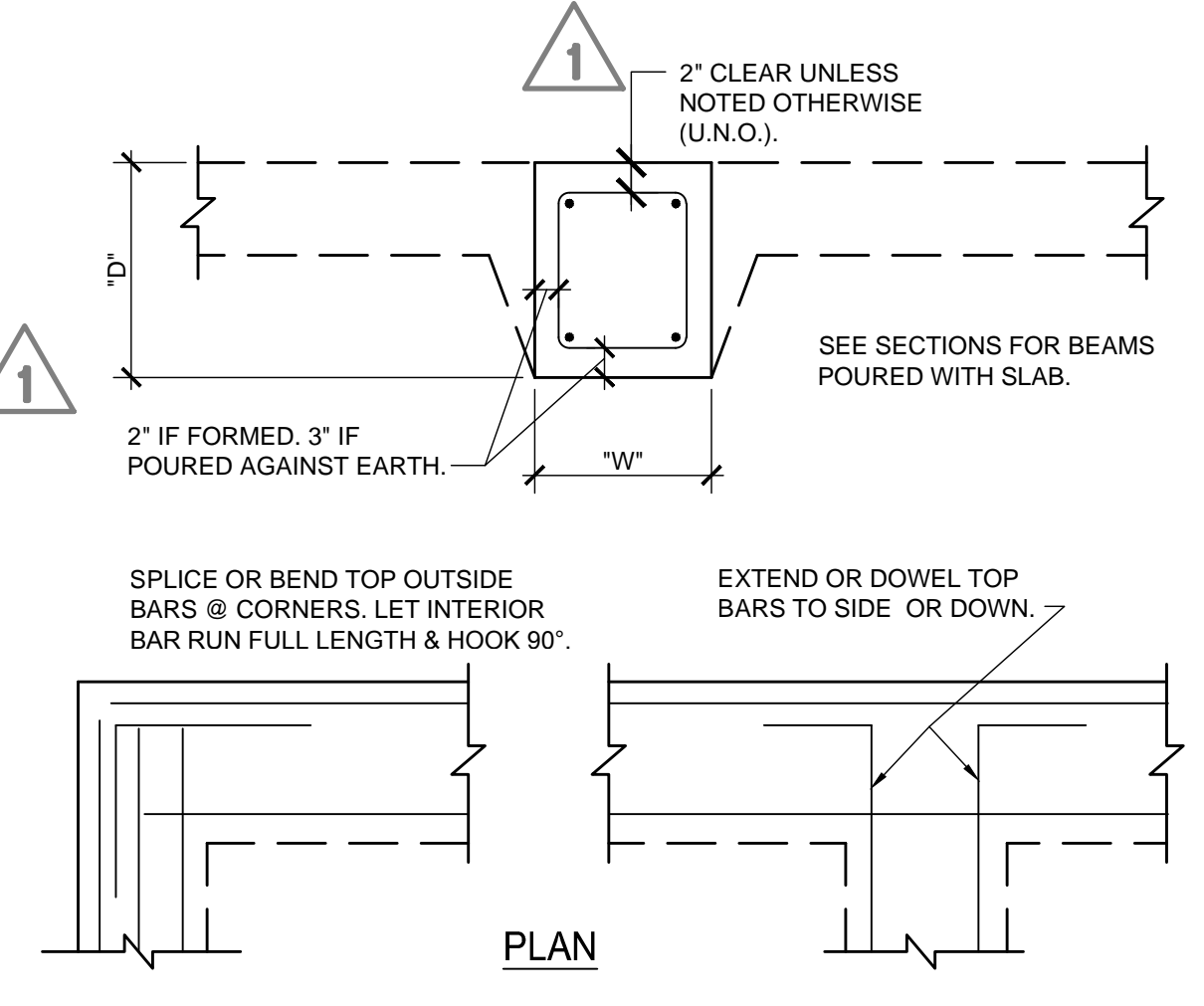
THE GENERAL CONTRACTOR SHALL COMPARE THE ARCH., CIVIL, LANDSCAPE, AND CIVIL / STRUCTURAL DRAWINGS AND REPORT ANY DISCREPANCY BETWEEN EACH SET OF DRAWINGS & WITHIN EACH SET OF DRAWINGS TO THE ARCHITECT AND ENGINEER PRIOR TO THE FABRICATION AND INSTALLATION OF ANY STRUCTURAL MEMBERS.
- ALL CIVIL / STRUCTURAL ELEMENTS OF THE PROJECT HAVE BEEN DESIGNED BY THE CIVIL / STRUCTURAL ENGINEER TO RESIST THE REQ'D. CODE VERTICAL AND LATERAL FORCES THAT COULD OCCUR IN THE FINAL COMPLETED STRUCTURE ONLY. IT IS THE RESPONSIBILITY OF THE CONTRACTOR TO PROVIDE ALL REQUIRED BRACING DURING CONSTRUCTION TO MAINTAIN THE STABILITY AND SAFETY OF ALL CIVIL / STRUCTURAL ELEMENTS DURING THE CONSTRUCTION PROCESS UNTIL THE STRUCTURE IS TIED TOGETHER AND COMPLETED.
- THE CONTRACT CIVIL / STRUCTURAL DRAWINGS AND SPECIFICATIONS REPRESENT THE FINISHED STRUCTURE, AND, EXCEPT WHERE SPECIFICALLY SHOWN, DO NOT INDICATE THE METHOD OR MEANS OF CONSTRUCTION. THE CONTRACTOR SHALL SUPERVISE AND DIRECT THE WORK AND SHALL BE SOLELY RESPONSIBLE FOR ALL CONSTRUCTION MEANS, METHODS, PROCEDURES, TECHNIQUES, AND SEQUENCE.

- PERIODIC SITE OBSERVATION BY FIELD REPRESENTATIVES OF SCHRENK & PETERSON CONSULTING ENGINEERS, INC. IS SOLELY FOR THE PURPOSE OF DETERMINING IF THE WORK OF THE CONTRACTOR IS PROCEEDING IN GENERAL ACCORDANCE W/ THE STRUCTURAL CONTRACT DOCUMENTS. THIS LIMITED SITE OBSERVATION SHOULD NOT BE CONSTRUED AS EXHAUSTIVE OR CONTINUOUS TO CHECK THE QUALITY OR QUANTITY OF THE WORK, BUT RATHER PERIODIC IN AN EFFORT TO GUARD THE OWNER AGAINST DEFECTS OR DEFICIENCIES IN THE WORK OF THE CONTRACTOR.
- THE CONTRACTOR SHALL INVESTIGATE EXISTING AND PREVIOUSLY CONSTRUCTED BUILDINGS/STRUCTURES UTILITIES AND SHALL TAKE PROPER AND NECESSARY PRECAUTIONS TO PROTECT SAME FROM DAMAGE DUE TO THE EXECUTION OF NEW WORK SHOULD DAMAGE OCCUR DUE TO THE CONTRACTOR'S NEGLIGENCE. THE COST AND RESPONSIBILITY FOR REPAIRING OR REPLACING THE WORK IN ITS ORIGINAL CONDITION SHALL BE BORNE BY THE CONTRACTOR AT NO COST TO THE OWNER.
- CONTRACTOR SHALL COORDINATE LOCATIONS, SIZES, EXTENT, ETC. OF CURBS, DEPRESSIONS, SLOPES, RECESSES, EMBEDDED ITEMS, OPENINGS IN SLAB, ETC. WITH ARCHITECTURAL, MECHANICAL, ELECTRICAL, CIVIL, LANDSCAPE, AND OTHER DRAWINGS. THE INFORMATION SHOWN ON THESE DRAWINGS FOR INDICATED ITEMS IS SCHEMATIC IN NATURE AND MAY BE INCOMPLETE.
- PILING:
 - PILES SHALL BE CLASS B TREATED TIMBER INDICATED THUS "T" IN PLAN. COMPRESSION CAPACITY: 16 TONS. SEE SPECS. FOR ADDITIONAL INFORMATION. INSTALL TIP TO ELEV. (-58.00')
 - PILES SHALL BE CLOSED-END STEEL PIPE INDICATED THUS "S" IN PLAN. COMPRESSION CAPACITY: 16 TONS. SEE SPECS. FOR ADDITIONAL INFORMATION. INSTALL TIP TO ELEV. (-58.00')
- DESIGN LOADS (2009 IBC, ASCE7-05):
 - LIVE LOAD - PILE-SUPPORTED SIDEWALKS = 250 psf.
 - PILE-SUPPORTED VEHICULAR PAVEMENT = AASHTO HS-20.
 - WIND - V = 130 mph.
 - EXPOSURE B.

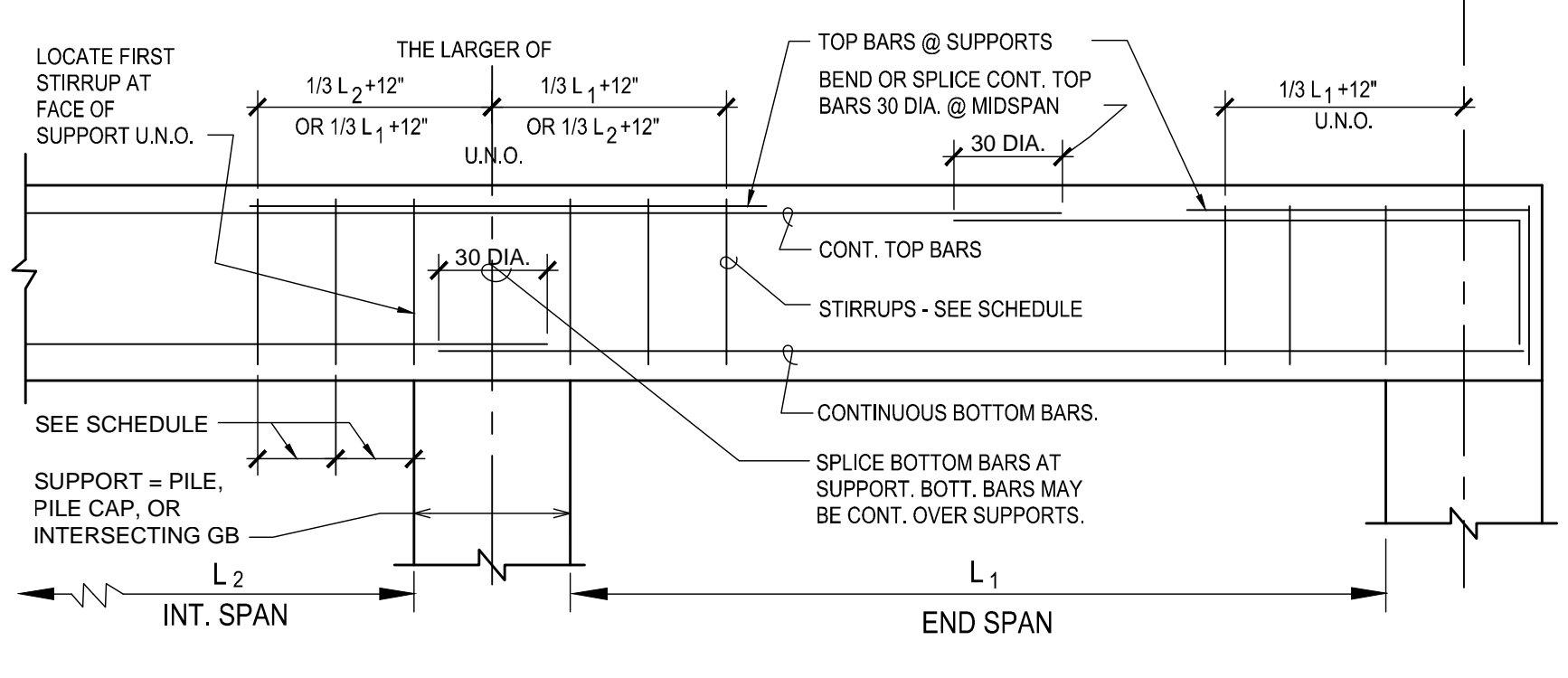
REINFORCING STEEL SPLICE LENGTHS

PROVIDE SPLICES FOR REINFORCING STEEL AS INDICATED UNLESS NOTED OTHERWISE.

BAR SIZE	CLASS	TOP BAR	BOT. & VERT. BAR
#3	2'-0"	1'-7"	
#4	2'-8"	2'-1"	
#5	3'-4"	2'-7"	
#6	4'-0"	3'-1"	
#7	4'-9"	3'-8"	
#8	5'-8"	4'-4"	
#9	7'-7"	5'-10"	
#10	9'-6"	7'-4"	
#11	11'-9"	8'-11"	



1 CHART - SPLICE LENGTHS N.T.S.



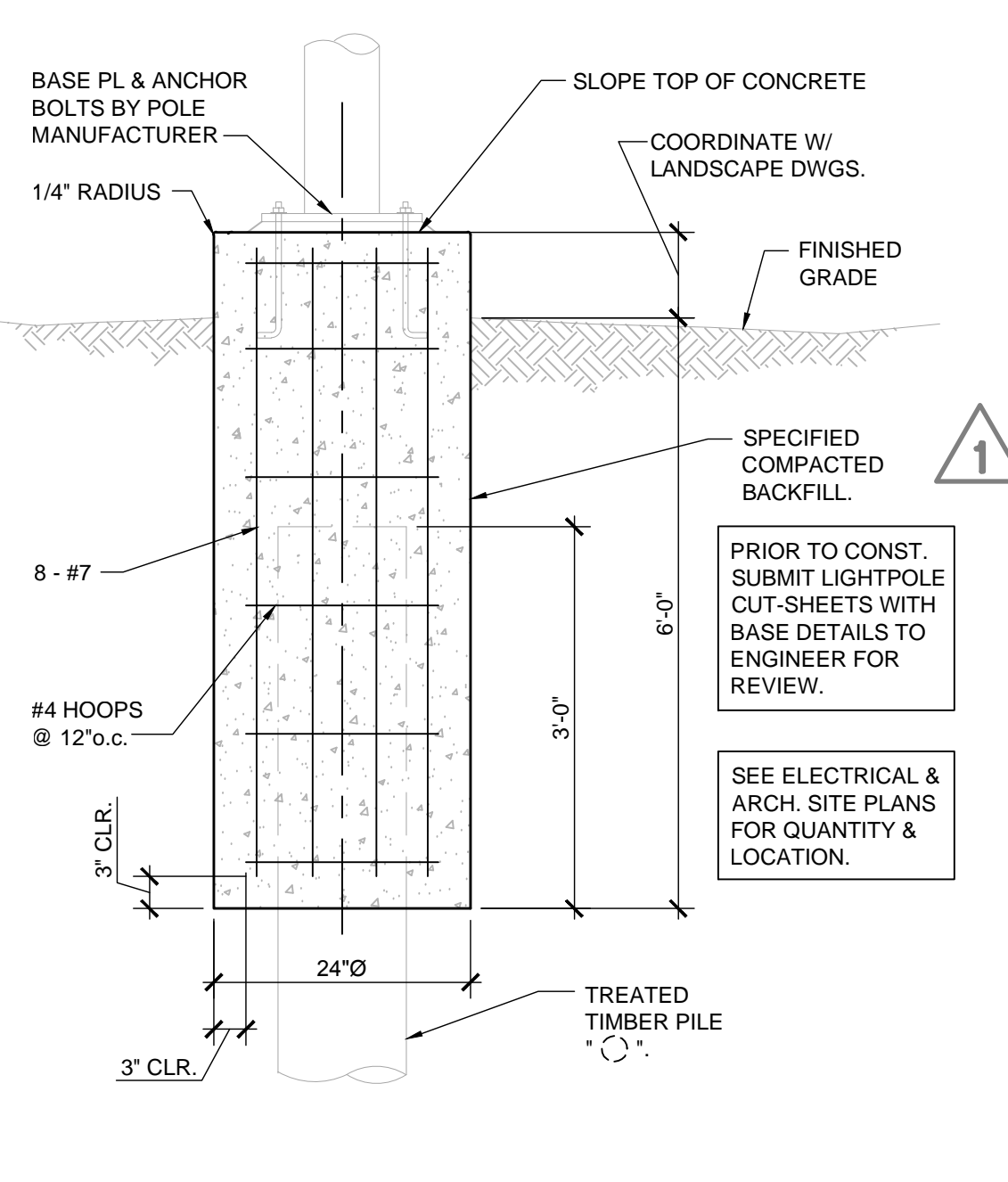
3 TYPICAL GRADE BEAM DETAIL N.T.S.

GRADE BEAM SCHEDULE

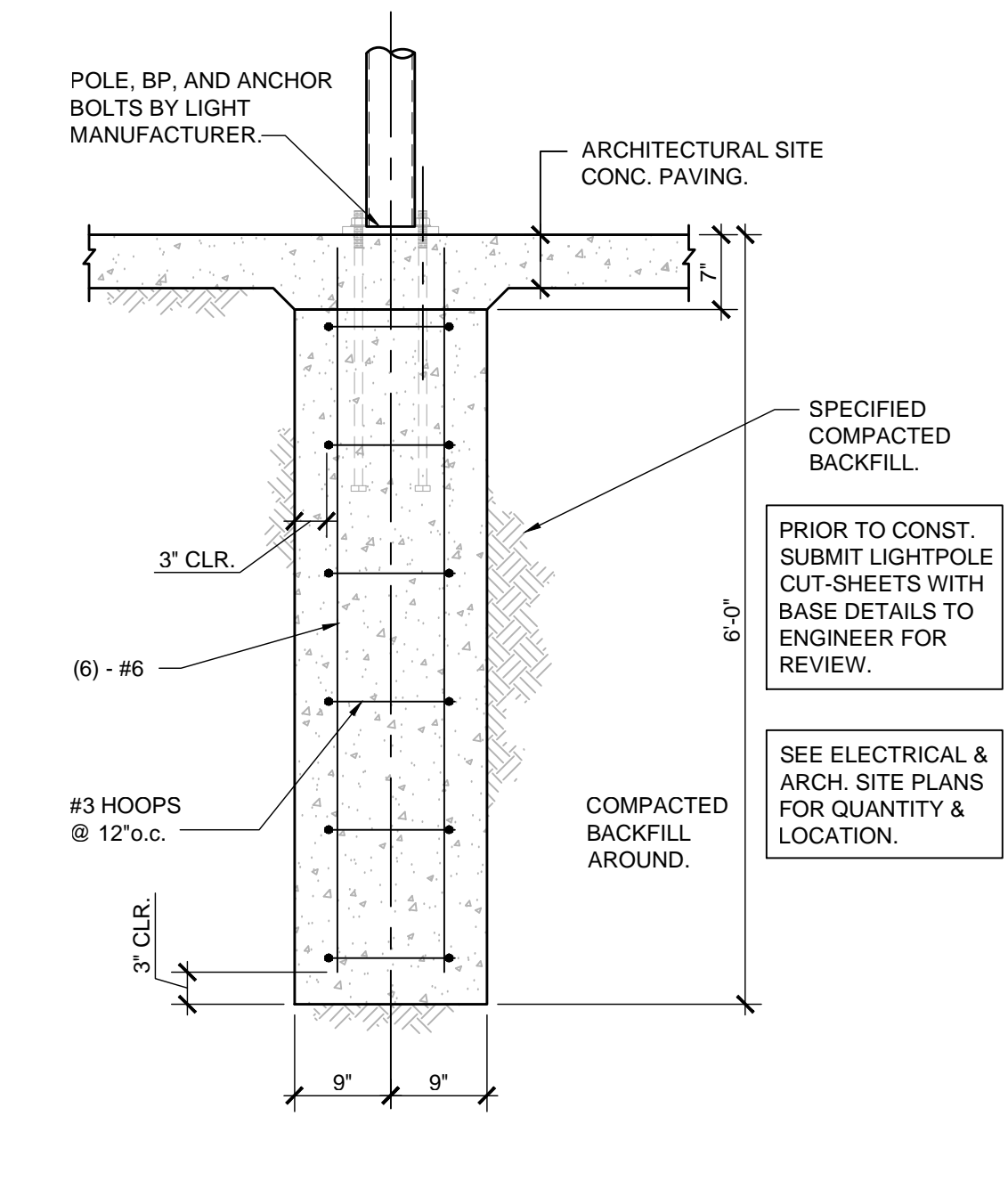
MARK	SIZE	REINFORCEMENT			STIRRUPS FROM EACH PILE OR PILE CAP	REMARKS
		TOP CONT.	TOP @ SUPPORT	BOT. CONT.		
GB-1	24 18	3-#6		3-#6	#3 @ 24" O.C.	
GB-2	24 18	3-#7		3-#7	#3 @ 7" O.C.	
GB-3	24 30	3-#7		3-#7	#3 @ 8" O.C.	
GB-4	24 24	3-#7		3-#7	#4 @ 10" O.C.	
GB-5	60 24	5-#10		5-#10	#6 SET @ 8" O.C.	
GB-6	48 24	5-#8		5-#8	#4 SET @ 8" O.C.	
GB-7	60 24	5-#8		5-#8	#4 SET @ 8" O.C.	
GB-8	36 18	4-#6		4-#6	#4 @ 7" O.C.	
GB-9	24 18	3-#7		3-#7	#4 @ 7" O.C.	
GB-10	12 16	2-#6		2-#6	#3 @ 24" O.C.	
GB-11	24 18	3-#6		3-#6	9-#3 @ 7" O.C. FROM EAST END REM. @ 24" O.C.	
GB-12	16 18	2-#6		2-#6	#3 @ 24" O.C.	
GB-13	24 18	3-#7		3-#7	#3 @ 24" O.C.	
GB-14	24 27	4-#5		4-#5	#3 @ 24" O.C.	
GB-15	24 18	3-#8		3-#8	#3 @ 7" O.C.	
GB-16	44 18	4-#6		4-#6	#3 @ 24" O.C.	
GB-17	24 24	4-#9		4-#11	#5 SET @ 10" O.C.	
GB-18	30 30	4-#10		4-#10	#4 SET @ 10" O.C.	

SEE RFI 02469 for GB Types GB-19, GB-20, and GB-21 and Modification to GB-18

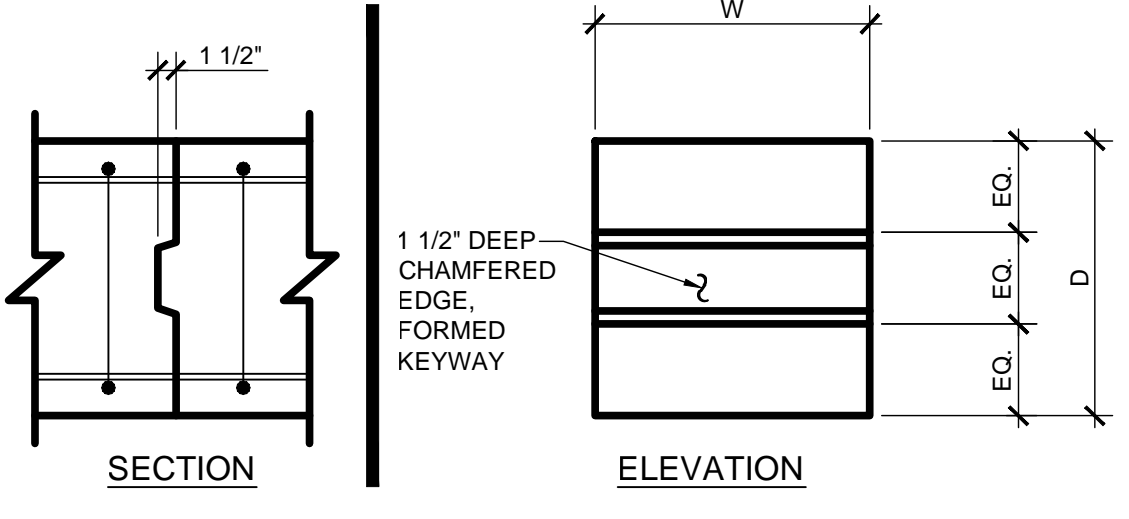
4 GRADE BEAM SCHEDULE N.T.S.



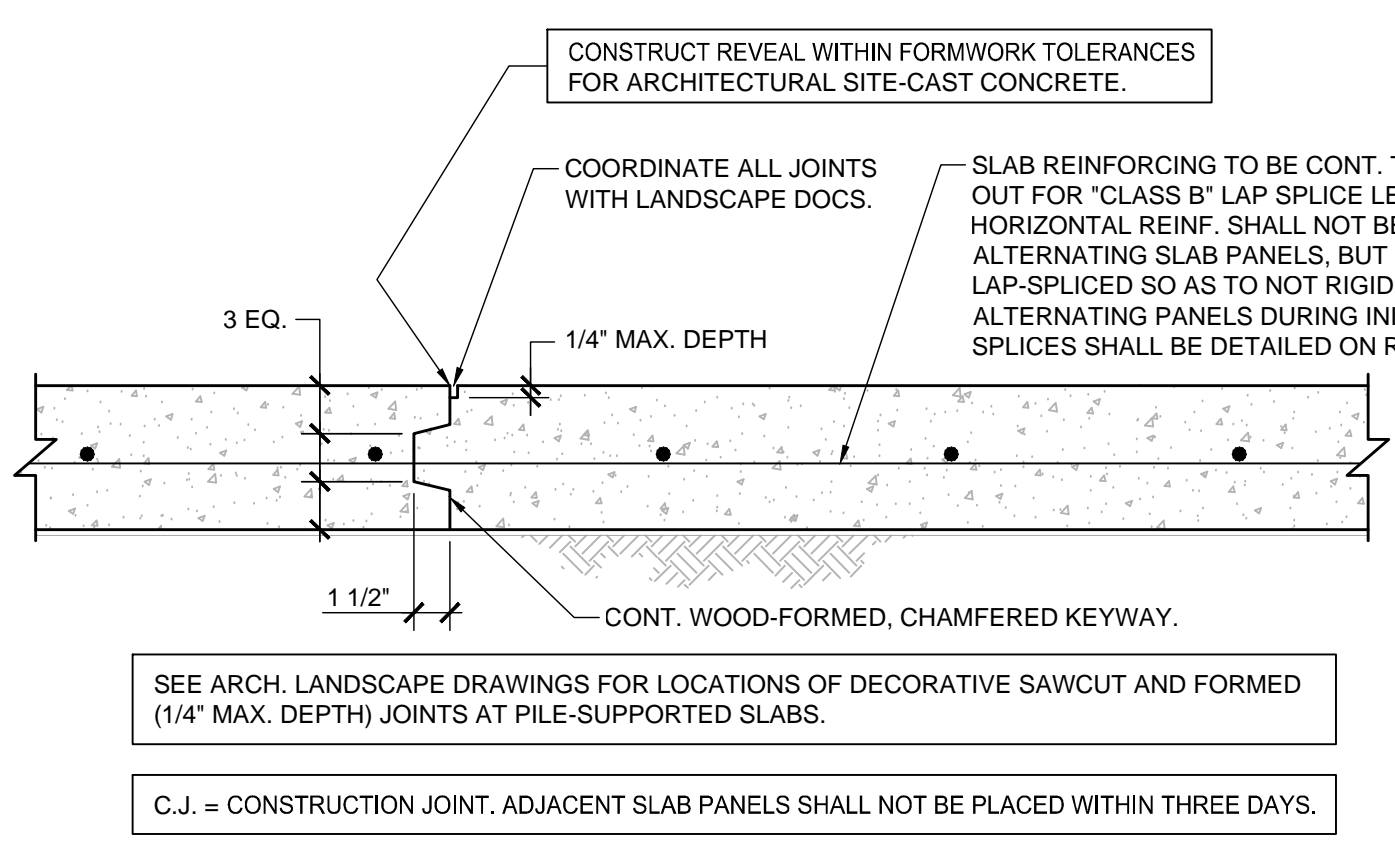
2A FOUNDATION - LIGHT STD. (30' MAX. HEIGHT) N.T.S.



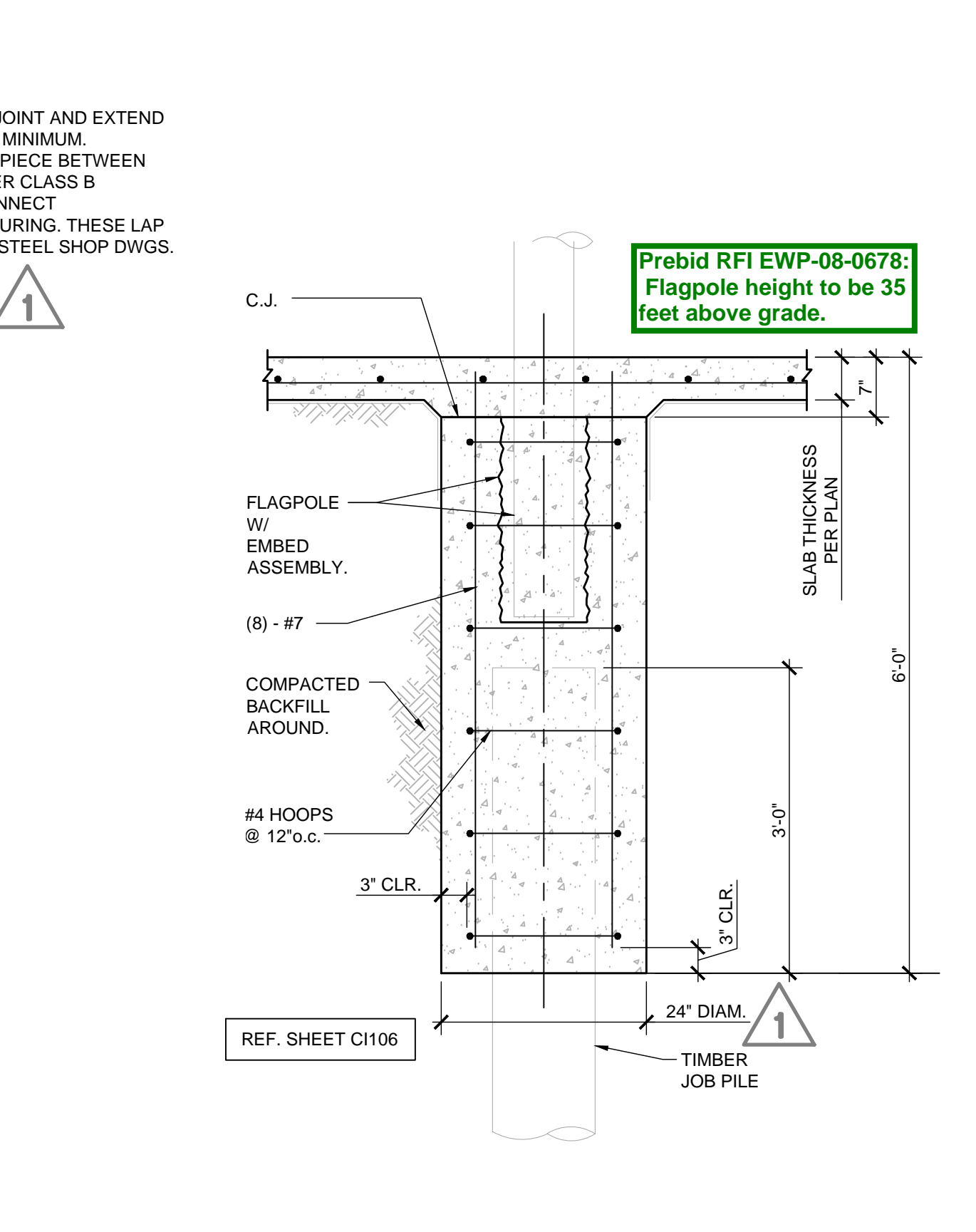
2B FOUNDATION - LIGHT STD. (18'-6" MAX. HEIGHT) N.T.S.



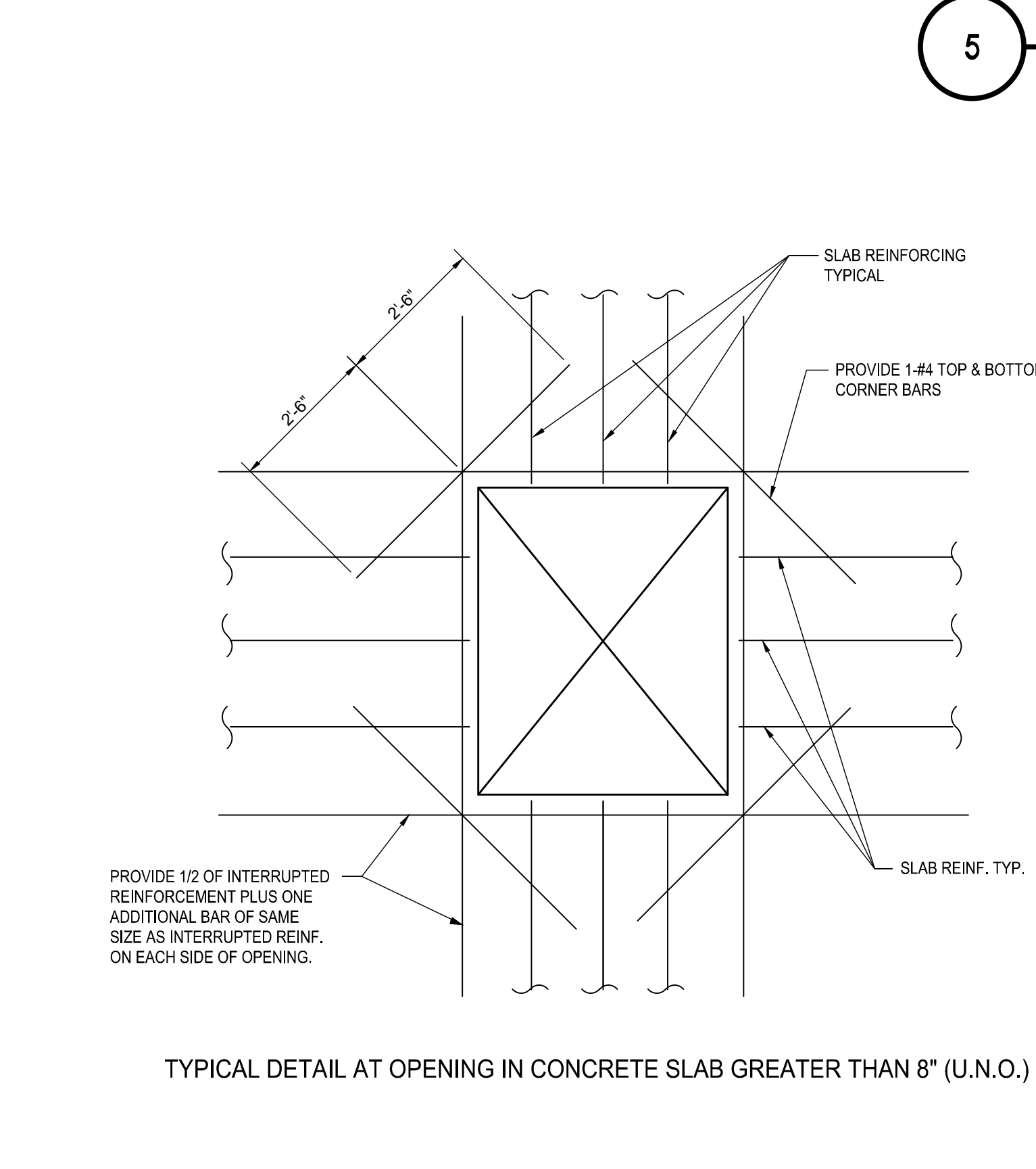
5 CONST. JT. FOR GRADE BEAMS N.T.S.



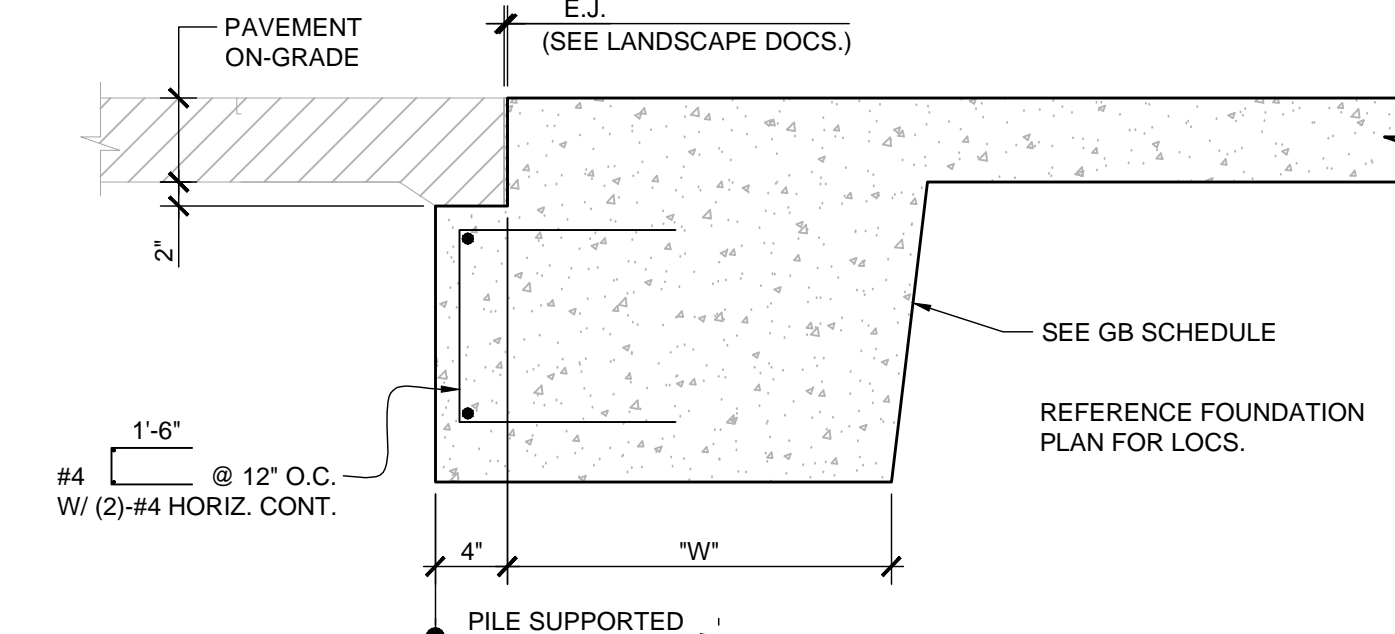
6 CONSTRUCTION JOINT FOR SLABS N.T.S.



8 FLAGPOLE AT MAIN ENTRY N.T.S.



9 TYPICAL DETAIL N.T.S.



7 PAVEMENT SUPPORT LEDGE N.T.S.

SLAB REINFORCING SCHEDULE

MARK	DESCRIPTION
1	#4 @ 10" O.C. EACH WAY AT SLAB MID-DEPTH.
2	#5 @ 10" O.C. BOTTOM.
3	#4 @ 12" O.C. TEMP./SHRINKAGE REINF. TO BE PLACED ATOP BOTTOM BARS.
4	#5 x 8'-6" @ 10" O.C. TOP, CENTERED AT GB.
5	#4 20" 3'-0" @ 12" O.C. TOP.
6	#5 @ 10" O.C. E.W. AT SLAB MID-DEPTH.
7	#4 @ 12" O.C. BOTTOM.
8	#4 @ 12" O.C. E.W. BOTTOM.
9	#4x8'-0" @ 12" O.C. TOP, CENTERED AT GB.
10	#5 @ 12" O.C. E.W. TOP & BOTTOM.
11	#5x8'-0" @ 10" O.C. TOP, CENTERED AT GB.
12	#6 @ 9" O.C. BOTT.
13	#6 @ 12" O.C. BOTT.

CIVIL - STRUCTURAL FOUNDATION PLAN LEGEND/NOTES

MARK	DESCRIPTION
A	PAVEMENT SUPPORT LEDGE PER 7/C1200.
B	24" SQ. CONCRETE PEDESTAL.
C	LIGHT STD. FOUNDATION PER 2A/C1200.
D	LIGHT STD. FOUNDATION PER 2B/C1200.
E	RATED BOLLARD FOUNDATION PER 6/C1205.
F	SHALLOW MOUNT RATED BOLLARD FOUNDATION PER 7/C1205.
G	NON-RATED BOLLARD FOUNDATION PER 8/C1205.
H	SHALLOW MOUNT NON-RATED BOLLARD FOUNDATION PER 9/C1205.
2PA (-0.58)	EXAMPLE OF PILE CAP DESIGNATION W/ TOP OF CAP ELEVATION.
	REFER TO ARCHITECTURAL LANDSCAPE DWGS. FOR PLAN DIMENSIONS AND TOP OF CONCRETE ELEVATIONS.
	PROVIDE ARCHITECTURAL SITE CONCRETE FINISH FOR ALL EXPOSED SURFACES.
	THE PHASING OF CIVIL-STRUCTURAL PILING AND FOUNDATION CONSTRUCTION SHOWN MUST BE COORDINATED W/ ALL DISCIPLINES OF WORK AND PHASES OF SITE AND BUILDING CONSTRUCTION ACTIVITIES.
	TREATED TIMBER JOE PILE
	TREATED TIMBER JOE PILE W/ TENSION CONNECTORS PER 2A/C1201.
	CLOSED-END STEEL PIPE PILE END PLATE PER 2B/C1201.
-1.00	TOP OF CONCRETE ELEVATION
	-EXISTING PILES CONFLICTING WITH NEW PILE SUPPORTED CONSTRUCTION SHALL BE CUT-OFF 1'-0" BELOW UNDERSIDE OF CONCRETE.
	-EXISTING PILES CONFLICTING WITH NEW PILE SUPPORTED CONSTRUCTION SHALL BE CUT-OFF 3'-0" BELOW UNDERSIDE OF BASE MATERIAL.
	OXYGEN TANK FOUNDATION. PRIOR TO PILE INSTALLATION AND REINFORCING SHOP DWG. SUBMITTAL, THE TANK VENDOR SHALL SUBMIT TANK EQUIPMENT ANCHORAGE DETAILS AND REACTIONS FOR ENGINEER REVIEW.
	REFER TO C1204 FOR UTILITY CROSSING AT PERIMETER FOOTING.

CONSTRUCTION DOCUMENTS 1 FULLY SPRINKLERED

<p>CONSULTANTS:</p> <p>DESMAN ASSOCIATES / PARKING CODE CONSULTANTS, INC. / CODE CONSULTANT THE SEXTANT GROUP / AV & ACOUSTICAL HAMMER DESIGN ASSOCIATES / FOOD SERVICE PYBURN & ODOM / ABATEMENT TATA & HOWARD / TANK CONSULTANT</p>		<p>ARCHITECT/ENGINEERS:</p> <p>studio NOVA SCHRENK & PETERSON CONSULTING ENGINEERS / CIVIL KORDA/NEMETH ENGINEERING / STRUCTURAL BR+A CONSULTING ENGINEERS / MECH, ELECT, PLUMBING, LOW VOLTAGE ARCHITECTURAL ENGINEERING / PLUMBING SCALES ASSOCIATES / FIRE PROTECTION</p>		<p>DRAWING TITLE CIVIL-STRUCTURAL GENERAL NOTES AND SITE DETAILS</p> <p>PROJECT TITLE SLVHCS REPLACEMENT MEDICAL CENTER PROJECT</p> <p>PROJECT NUMBER 629-HS2-401</p> <p>BUILDING NUMBER</p> <p>DOCUMENT SET PACKAGE WP_08</p> <p>DRAWING NUMBER C1200</p>		<p>OFFICE OF CONSTRUCTION AND FACILITIES MANAGEMENT</p> <p>Department of Veterans Affairs</p>	
<p>13 - BULLETIN 016 08/07/2013</p> <p>1 - ADDENDUM 1 05/23/2012</p> <p>REVISIONS: DATE</p>		<p>APPROVED: PROJECT DIRECTOR</p> <p>LOCATION NEW ORLEANS, LOUISIANA</p> <p>DATE 02/29/2012</p> <p>CHECKED JSE</p> <p>DRAWN MKG</p>		<p>VA FORM 08-4231</p>			