

FABRIC: 120" 9 GA. GALVANIZED (2" Mesh) CHAIN LINK FABRIC.

TOP RAIL: 1 5/8" O.D. FULL WEIGHT PIPE, 2.27 lbs. per foot. Top rail 21' in length, joined with 1 5/8" SLEEVE.

LINE POST: 2 1/2" O.D. FULL WEIGHT PIPE, 3.65 lbs. per foot. Line posts set 10' on center maximum spacing.

TERMINAL POST: 3" O.D. FULL WEIGHT PIPE, 5.79 lbs. per foot.

BRACING: 1 5/8" O.D. FULL WEIGHT PIPE, 2.27 lbs. per foot, used for the middle rail & bottom rail.

FITTINGS: REGULAR 12GA X 3/4" BRACE BAND & CARRIAGE BOLT, PRESSED STEEL RAIL-END, PRESSED STEEL BOULEVARD CLAMPS, PRESSED STEEL LOOP CAP, PRESSED STEEL CAP, 3/16" X 3/4" TENSION BAR, REGULAR 14ga x 3/4" TENSION BAND & CARRIAGE BOLT.

TIE WIRE: 8 1/4" 9GA **Steel** TIE WIRE & 6 1/2" **9 GA.** STEEL TIE WIRE spaced 15" on center for line posts & 14" on center for rails.

Arrow Fence
Since 1972



Division of NuArrow Industries, Inc.

ARROW FENCE CO. DIV. OF NU-ARROW IND.
2445 Aberdeen St.
KENNER, LA 70062
(504) 467-6467

LINE OF FENCE

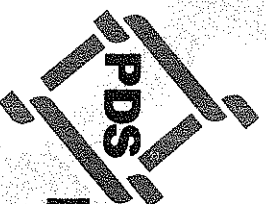
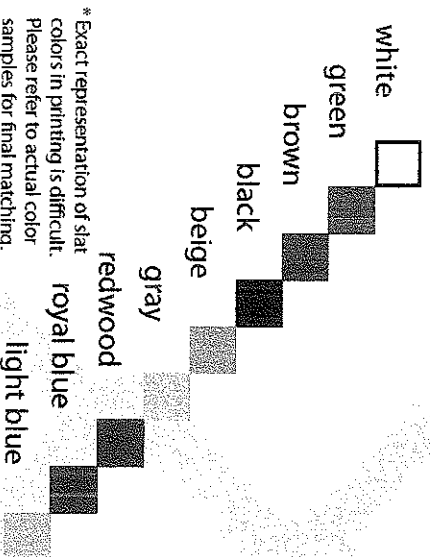
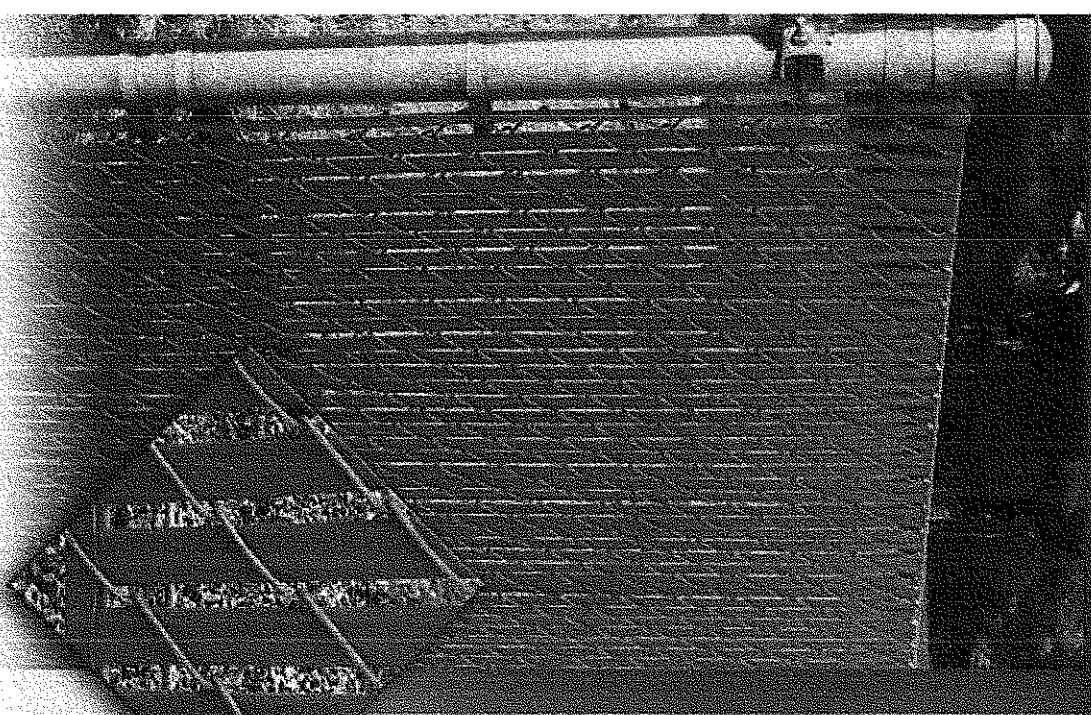
Drawn: 06/04/2014
File:

BOTTOM LOCK

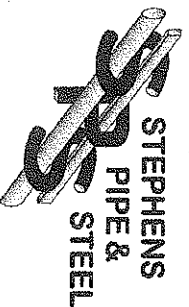
The Bottom-lock slat provides an economical and attractive way to enhance any chain link fence. Filtrona Extrusion is the largest manufacturer of Bottom Lock, which are marketed under the PDS brand name. With over 25 years of experience extruding this product and an exclusive, patented locking design, you can be assured of the highest standards in quality - from the raw materials used in manufacturing to the finished product in your fence.

- ❖ **DESIGN:** Bottom-Lock Slat's are flat tubular in shape, with reinforced "legs" inside for extra durability. Our patented, locking channel provides a "snap-in" locking effect for security and to deter vandalism.
- ❖ **STANDARD HEIGHTS:** 4, 5, 6, 7, 8, 10 and 12 feet. Special heights available upon requests.
- ❖ **WIND LOAD AND PRIVACY FACTOR:** Approximately 75%.
- ❖ **SLAT LENGTH:** 3 1/2' shorter than overall height of fence.

Ask for details about the 25-year warranty.



FENCE PRODUCTS



Distributed by: Stephens Pipe & Steel, LLC
2224 East Hwy 619
Russell Springs, KY 42642
1.800.451.2612
www.spsfence.com

Covered by one or more of the following patents:
US Patent 4,725,044 / 5,165,664 / 5,234,199 / 4,995,591

patented products from



FENCE PRODUCTS SPECIFICATIONS

BOTTOM LOCK SIZE SPECS

SLAT TYPE	SLAT WIDTH	MESH SIZE	WIRE GAUGE	SLATS PER BAG	APPROX. COVERAGE PER BAG
BOTTOM LOCK 2"	1 3/4"	2"	9 OR 11	82	10 LINEAR FEET
BOTTOM LOCK 2 1/4"	1 1/4"	2 1/4"	11 1/2 OR 11	78	10 LINEAR FEET
BOTTOM LOCK 1 3/4"	1 1/4"	1 3/4" & 2"	6, 9 OR 11	97	10 LINEAR FEET

MATERIALS

The Bottom Lock product is extruded from High Density Polyethylene (HDPE), color pigments and ultra violet (UV) inhibitors, specifically designed to retard the harmful effects of the sun and lengthen the life of the product.

DURABILITY

PDS® HDPE Fence Products are resistant to: severe weather conditions, salt water, sand, road dirt, most acids, alcohol, alkaliine, ammonia, petroleum distillates, and common environmental pollutants.

MAINTENANCE

Pressure cleaning of surface contaminants is quickly accomplished with plain water.

WINDLOAD DISCLAIMER

Filtrona will not be responsible for fence damage resulting from wind load conditions due to insufficient structural support.

HDPE TECHNICAL PROPERTIES

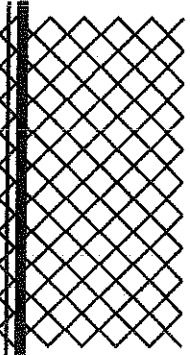
Property	Value
Melt Index	(6) A low melt index indicates improved stress and crack resistance
Density	(.957) Polyethylene ranges anywhere from .914 to .960 in density. A higher density yields maximum stiffness without becoming overly brittle.
Minimum Temp.	(-74° F) Polyethylene stays flexible even at this temperature extreme.
Maximum Temp.	(250° F) Polyethylene does not distort until reaching this temperature.
Tensile Strength	(3700 psi) Material will not suffer distortion or lesser loads or impacts

LIMITED WARRANTY

Bottom Lock carries a 25-year, pro-rata warranty against breakage under normal conditions. Write Filtrona Extrusion for full warranty information.

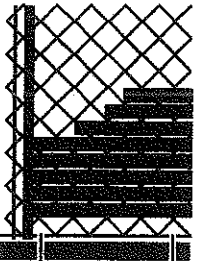
INSTALLATION INSTRUCTIONS

Step 1



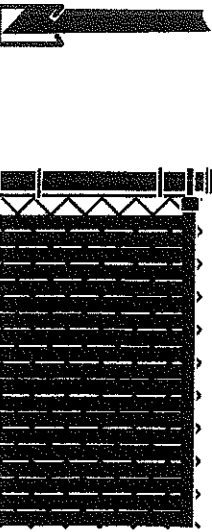
Insert rail horizontally in first full diamond of bottom of fence with open side facing up.

Step 2



Insert vertical slats with beveled/notched end downward. Slit engages and interlocks with bottom rail.

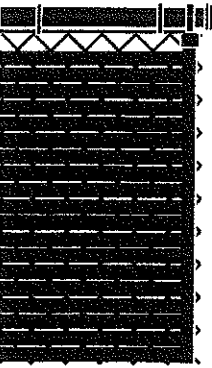
Step 3



Push the vertical slat into the horizontal channel to Lock-in Place.

Enjoy a beautiful fence that was simple to install.

Complete



Contact your local fence professional for more information about our complete line of enhancement products.

