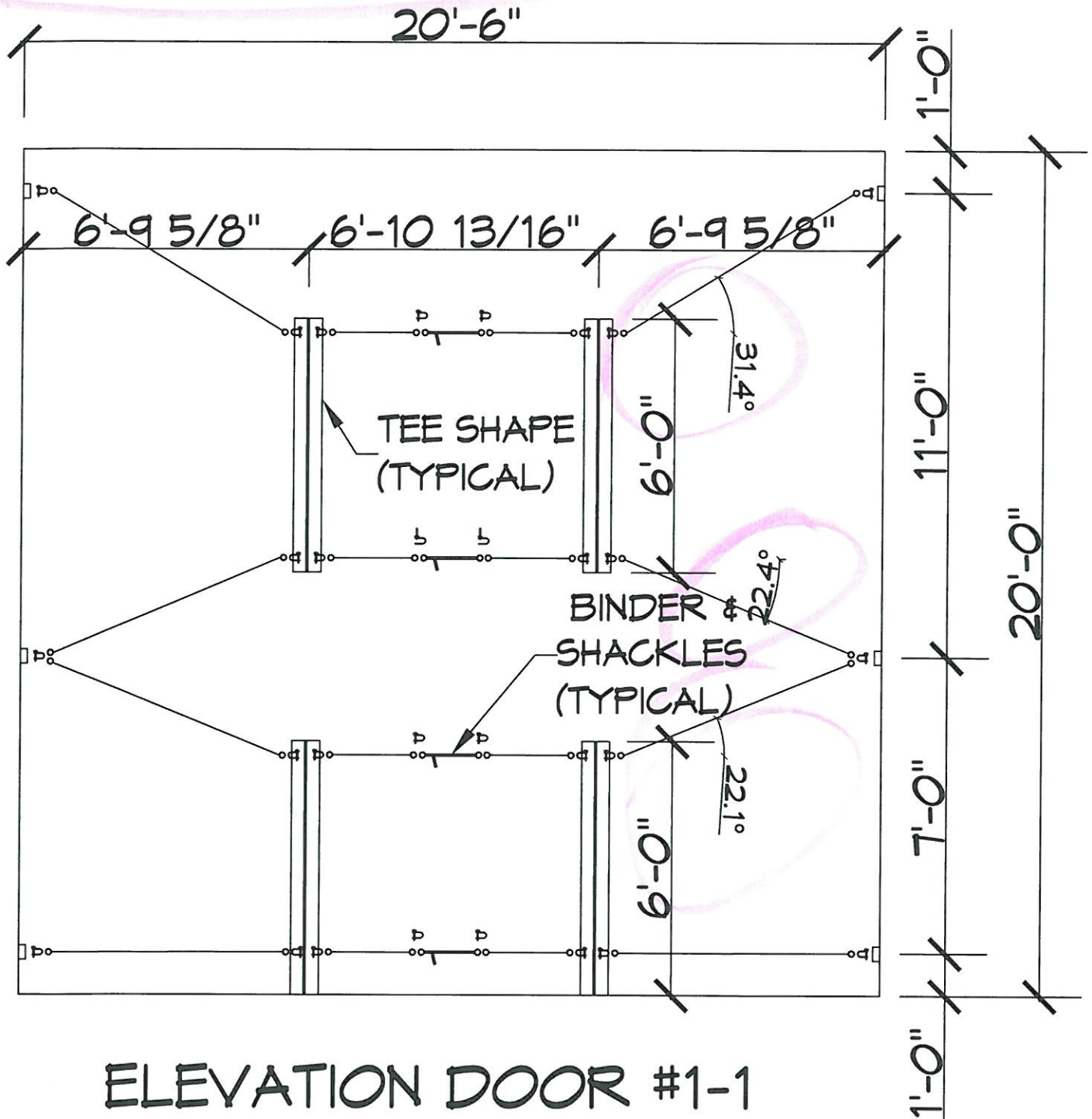


All cables

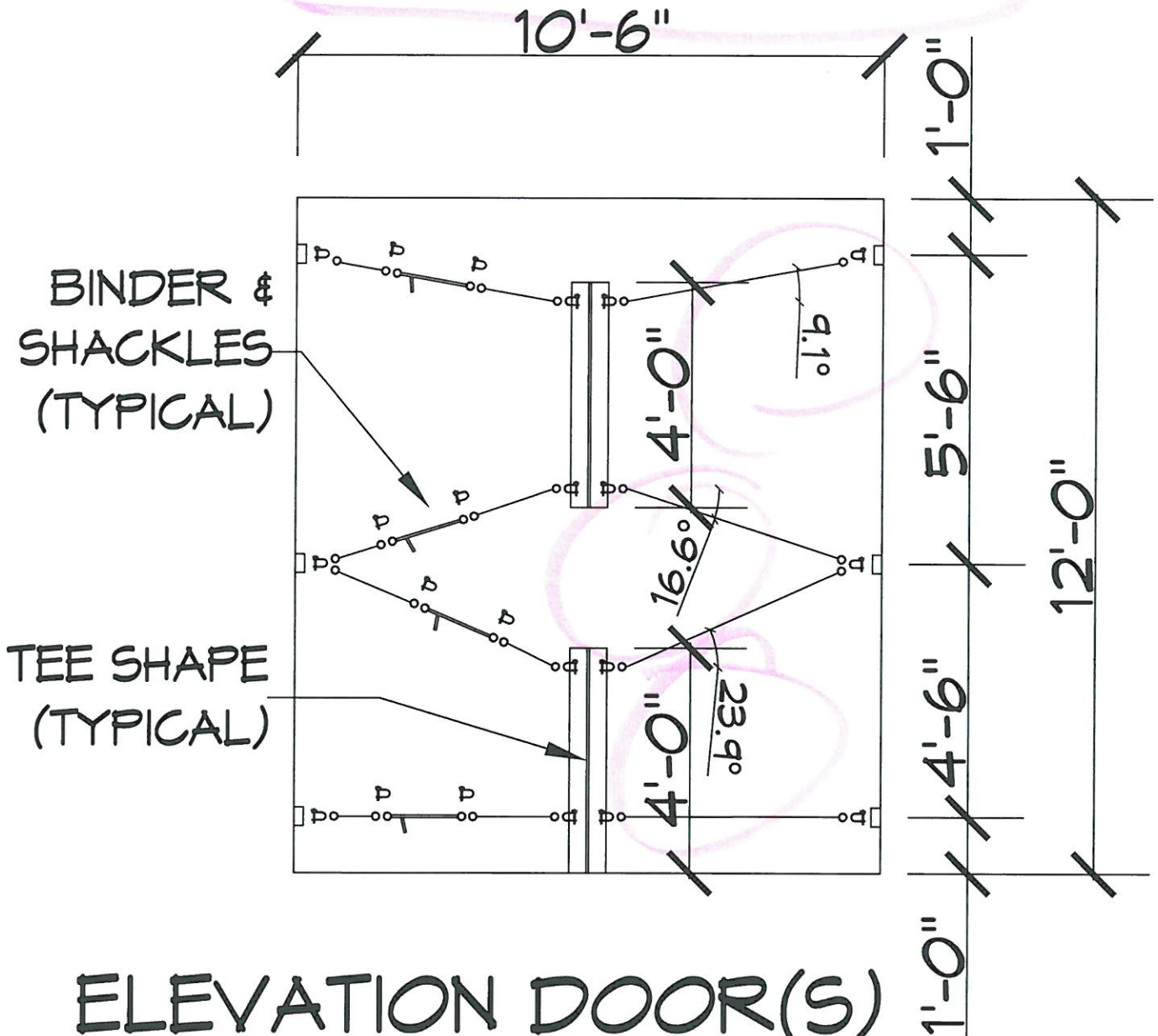
14.4°

Cable Tension = 1.13 tons



SHACKLES FOR THIS DOOR SHALL BE MINIMUM 5/8" STAINLESS STEEL D-SHAPE BOLTED SHACKLE.

Cable Tension = 0.34 tons



ELEVATION DOOR(S)

#3-2 - #3-6

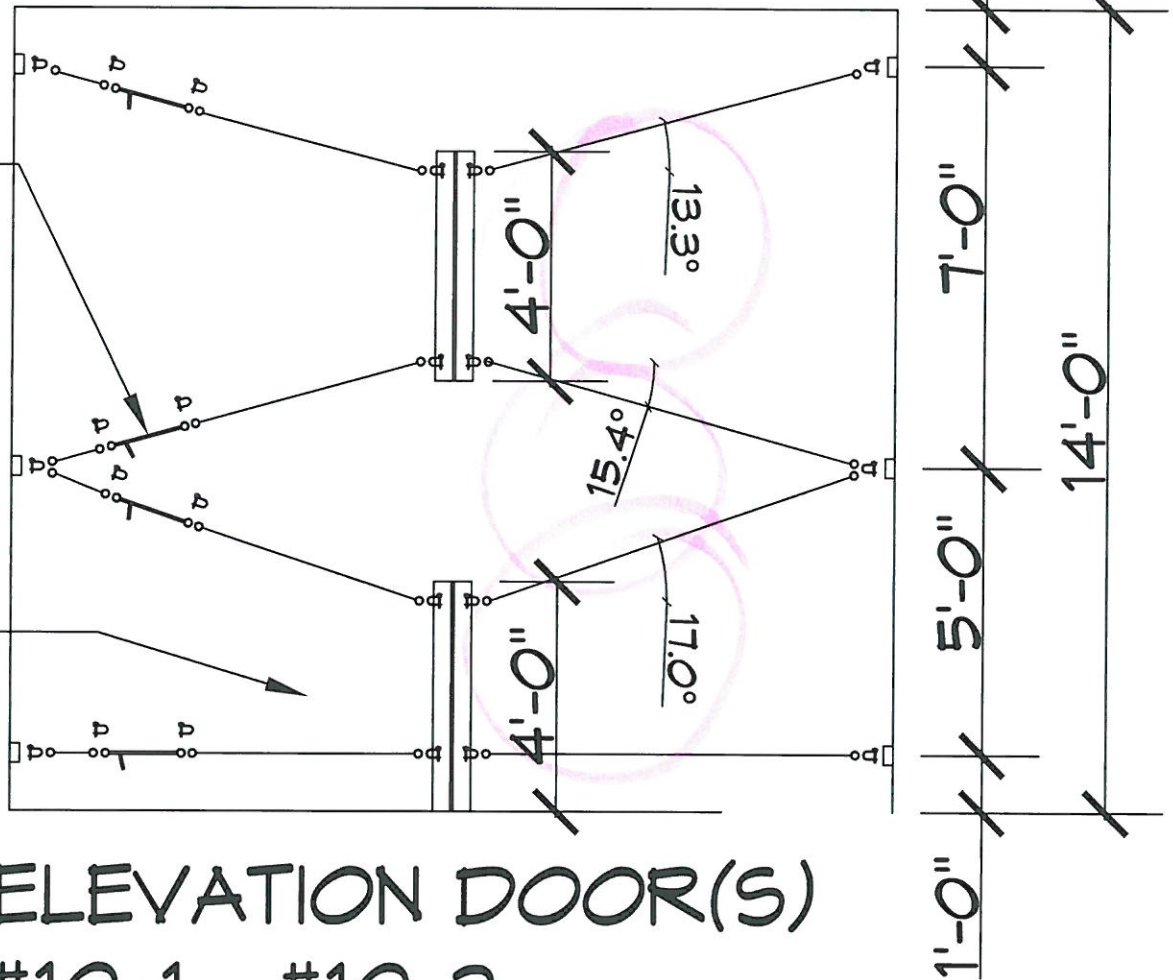
SHACKLES FOR THIS DOOR SHALL BE MINIMUM 1/2" STAINLESS STEEL D-SHAPE BOLTED SHACKLE.

Cable Tension = 0.52 tons

15'-6"

BINDER &
SHACKLES
(TYPICAL)

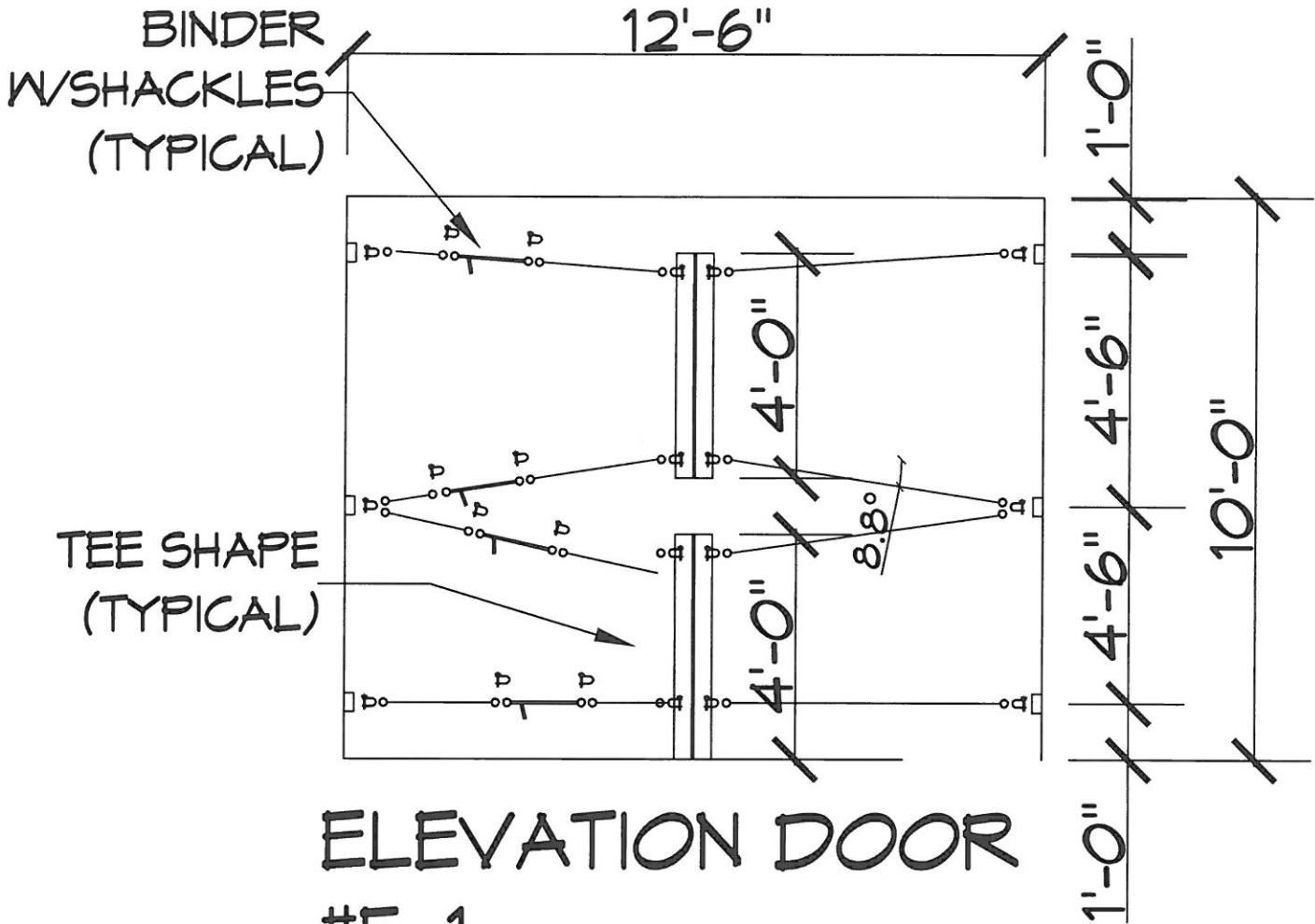
TEE SHAPE
(TYPICAL)



ELEVATION DOOR(S)
#10-1 - #10-2

SHACKLES FOR THIS DOOR SHALL
BE MINIMUM 1/2" STAINLESS STEEL
D-SHAPE BOLTED SHACKLE.

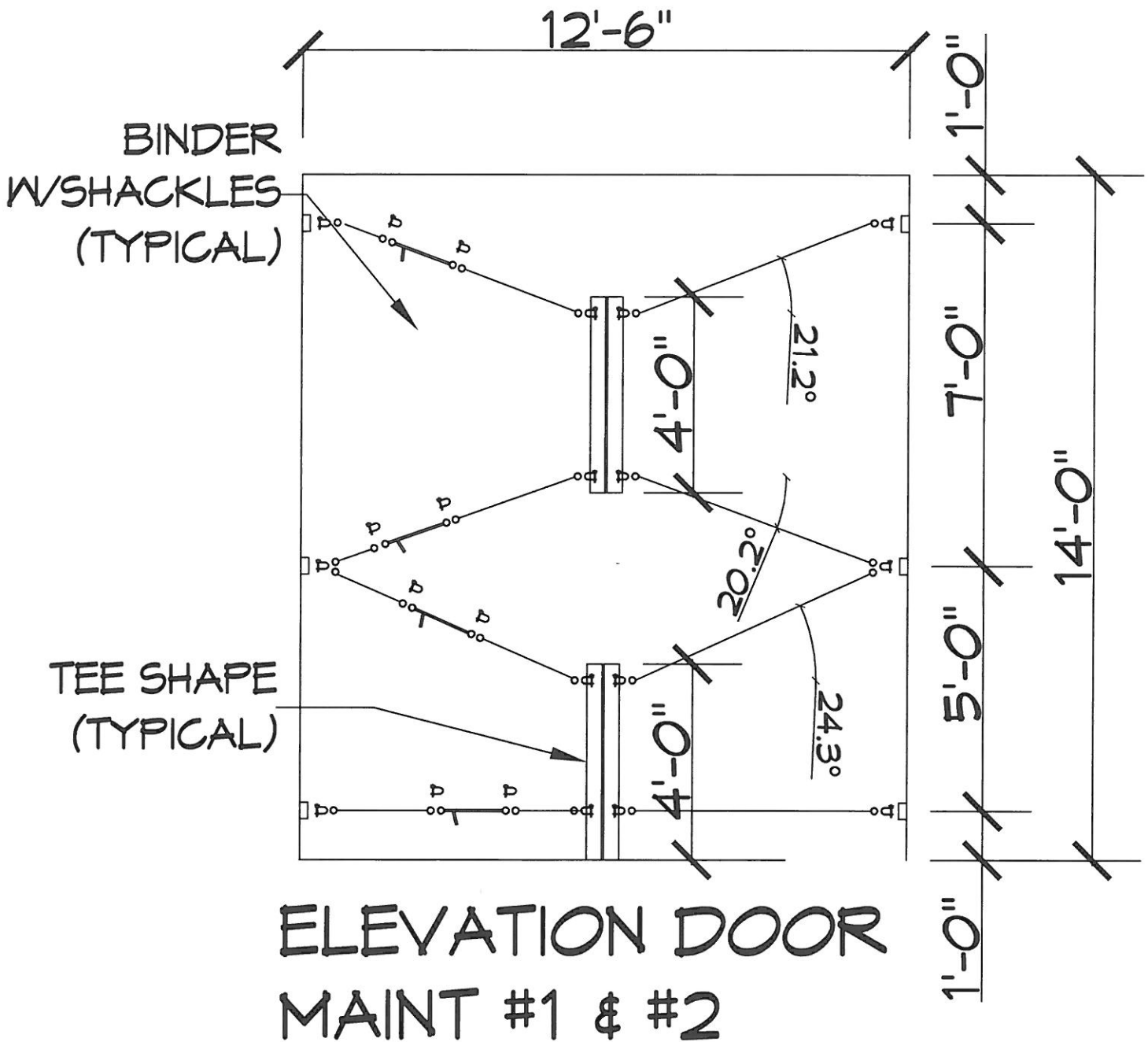
Cable Tension = 0.31 tons



ELEVATION DOOR
#5-1

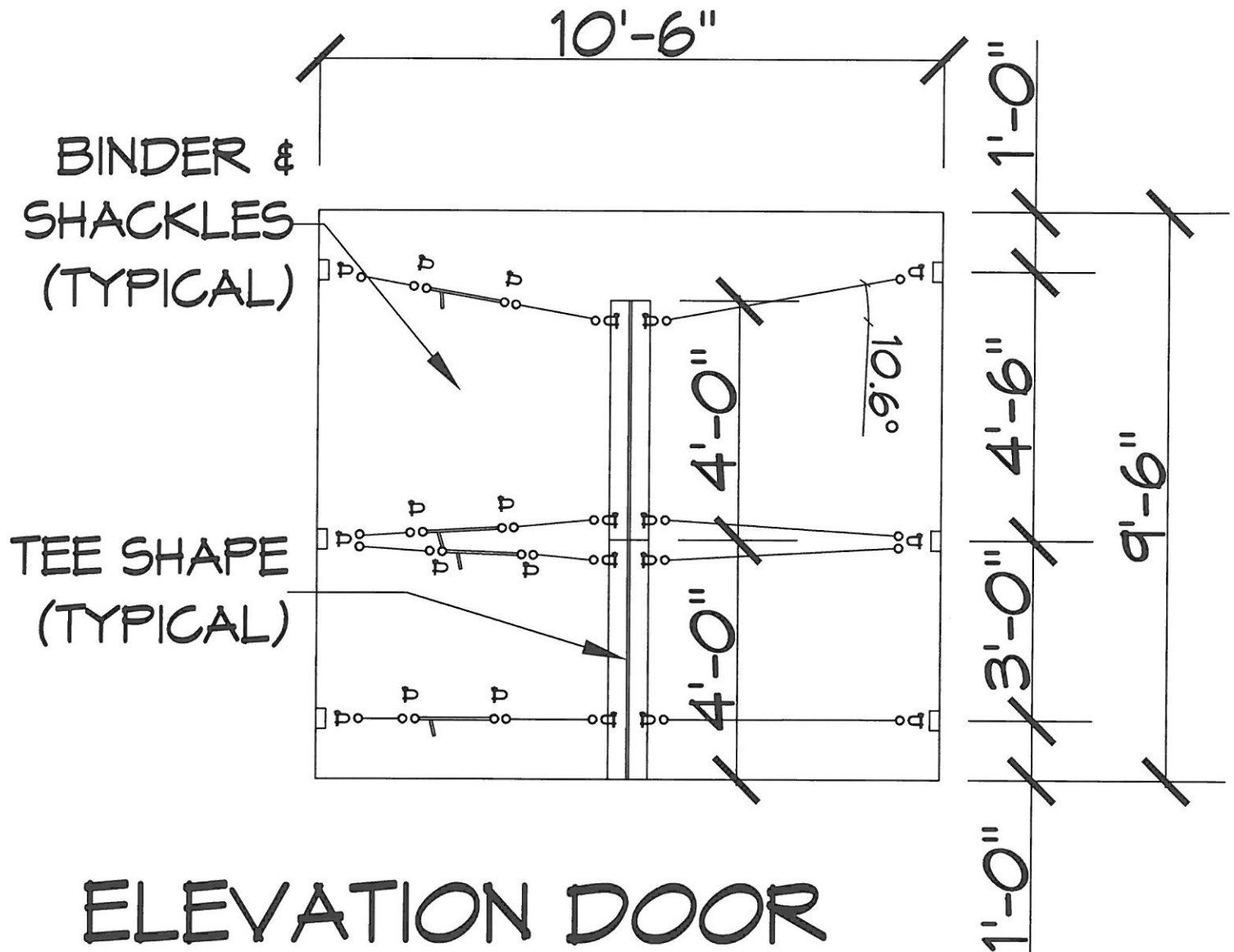
SHACKLES FOR THIS DOOR SHALL
BE MINIMUM 1/2" STAINLESS STEEL
D-SHAPE BOLTED SHACKLE.

Cable Tension = 0.40 tons



SHACKLES FOR THIS DOOR SHALL BE MINIMUM 1/2" STAINLESS STEEL D-SHAPE BOLTED SHACKLE.

Cable Tension = 0.34 tons



ELEVATION DOOR

#12-1

SHACKLES FOR THIS DOOR SHALL BE MINIMUM 1/2" STAINLESS STEEL D-SHAPE BOLTED SHACKLE.