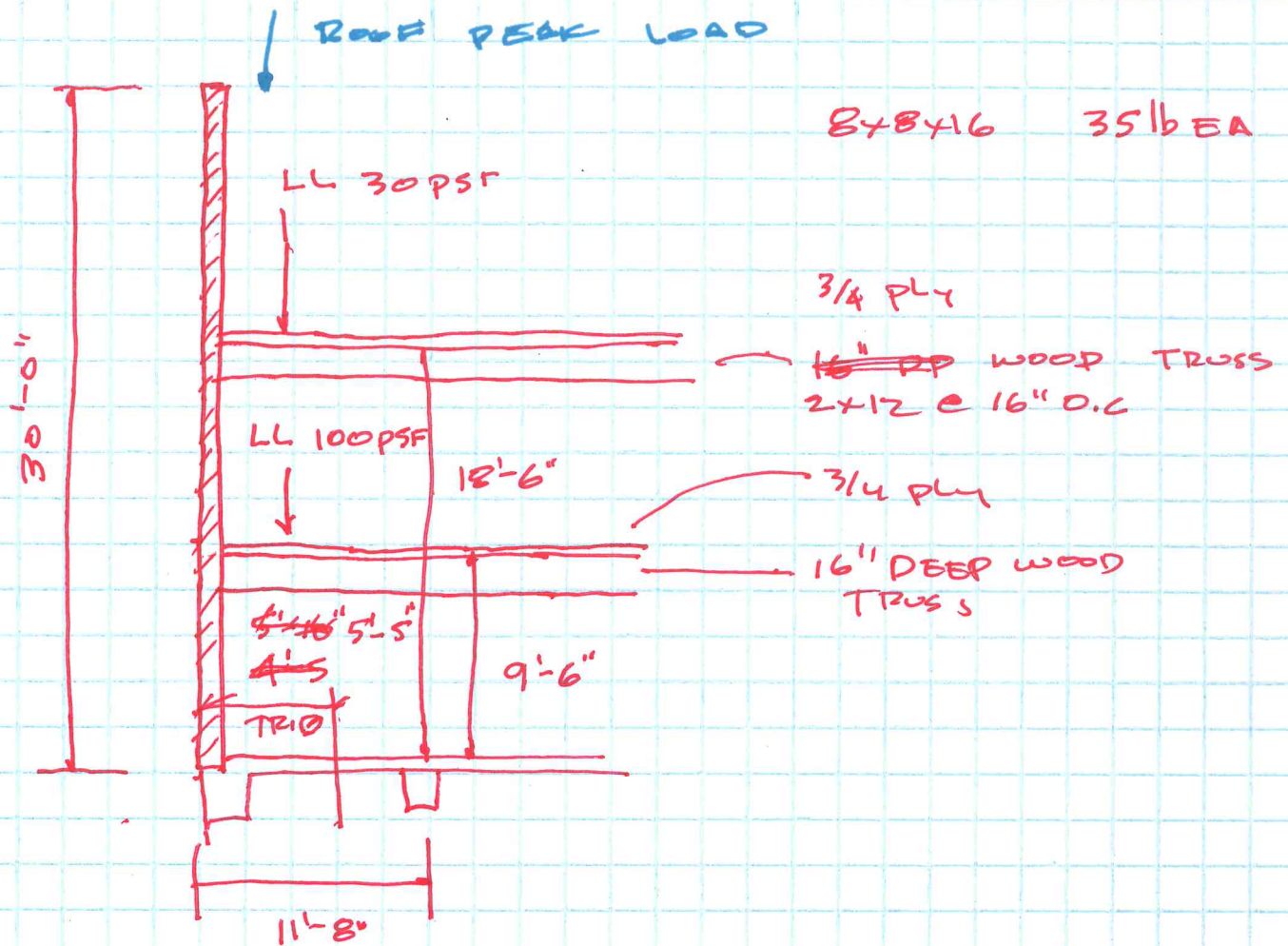


EXTERIOR WALL
 CMU & FLR LOADS
 PILE SPACING 4'-5"



BLOCK SURFACE AREA

W HT

$$4.416 \times 30 = 132 \text{ SF}$$

SF x UNIT WEIGHT

$$132 \cdot 48 \times 1.25 = 165.6 \text{ BLOCK}$$

TOTAL WT

$$156 \cdot 165.6 \times 35 =$$

$$\cancel{5775} \quad \cancel{5775} \text{ lb}$$

$$5775 \text{ lb}$$