

Tag: RTU-4

Comments:

Unit Information

Model:	Horizon™	Unit Length:	197 in	Weight Operating:	5662 lb*
Size:	N540	Unit Width:	101 in	<i>Note: Weight does not include CURB weight. See CURB submittal for actual</i>	
Quantity:	1	Unit Height:	93 in		
Supply Airflow:	8,950 CFM	Elevation:	0 ft	Refrigerant Charge	
Outside Airflow:	4,280 CFM	Ambient Air DB:	95 F	Circuit 1:	40.62 lbs
Minimum Airflow:	3,581 CFM			Circuit 2:	60.16 lbs

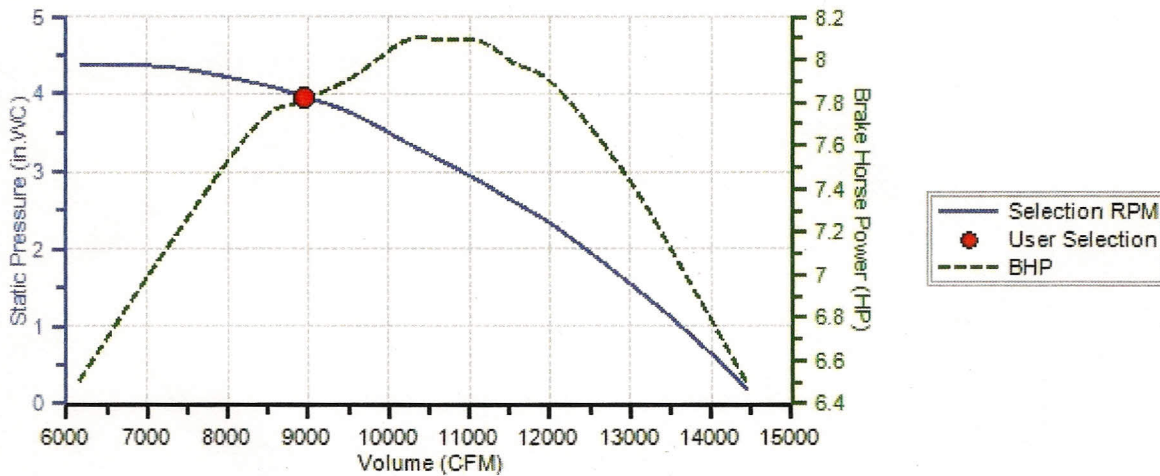
Cooling Performance

Gross Total Capacity:	494.9 MBh	Evaporator Face Area:	28.6 sq ft
Gross Sensible Capacity:	331.2 MBh	Evaporator Rows / FPI:	6 / 12
Net Total Capacity:	475 MBh	Condenser Face Area:	59.6 sq ft
Net Sensible Capacity:	311.3 MBh	Condenser Rows / FPI:	3 / 12
Entering Air DB / WB (Coil):	88.3 / 71.7 F	Air Velocity:	312 fpm
Leaving Air DB / WB (Coil):	54.9 / 54.9 F	Coil Air PD:	0.27 in H2O
Leaving Air DB / WB (Reheat):	66.69 / 59.5 F	EER:	9.3
Leaving Air DB / WB (Unit):	69.1 / 60.4 F	Watts:	51150

Heating Performance

Heat Type:	Gas Furnace	Entering Air DB:	50 F
Input Capacity:	600 MBh	Leaving Air DB:	99.7 F
Output Capacity:	480 MBh	Coil Air PD:	1.38 in H2O

Supply Fan CF180x2



Supply Pressure Drop Summary

External Static Pressure:	2.00 in H2O
Internal Pressure Drop:	1.95 in H2O
Total Static Pressure:	3.95 in H2O

Supply Fan Conditions

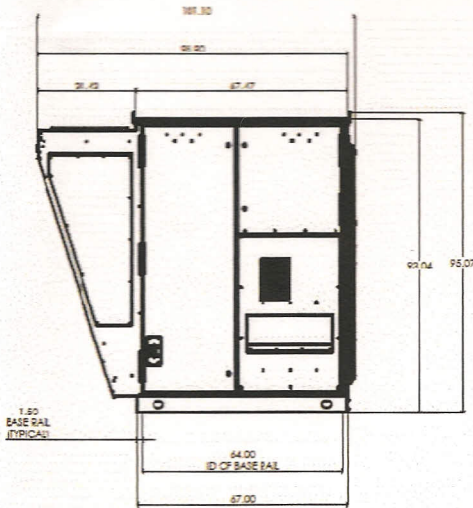
Fan Motor BHP:	7.81 BHP
Operating RPM:	2150 RPM
Minimum RPM:	1360 RPM

Unit Electrical Data

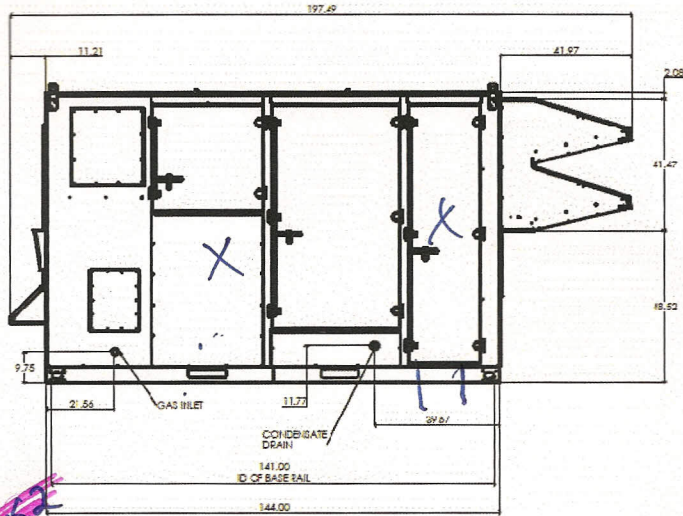
Unit Voltage-Ph-Hz:	208-3-60	Min Circuit Ampacity - MCA:	215.8 Amps
---------------------	----------	-----------------------------	------------

Unit Dimensions - 30-54 Ton R-410A PKGD Unitary Cooling Rooftop

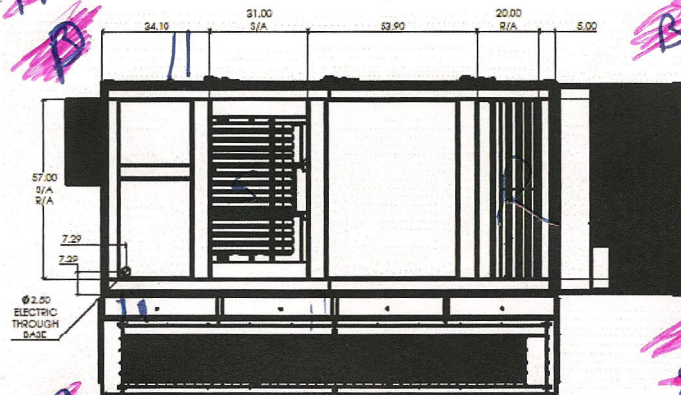
Qty: 1 Tags: RTU-4



Front View



Side View



Bottom View

~~1755.2~~
~~D~~
~~1692.9~~
~~1370.2~~
~~B~~
~~A~~
~~843.6~~

Pay No Attention To What I wrote!

Component Layout - 30-54 Ton R-410A PKGD Unitary Cooling Rooftop

Qty: 1 Tags: RTU-4

