



SIGN SUBMITTAL PACKAGE

SAP

8561114

REQUIRES VARIANCE:

SITE ID: 10204281

CHANNEL: Dealer STATUS: Rebrand

LOCATION: 3600 MacArthur Blvd Ste I
New Orleans Louisiana 70114-6852

SITE SUMMARY

STOREFRONT LENGTH:	19' 4"
MAX SIGN HEIGHT:	5' 1"
MAX SIGN LENGTH:	19' 4"
MAX # SIGNS:	1
COLOR VARIANCE:	NOT SPECIFIED IN CODE
PYLON AVAILABLE:	YES
BLADE AVAILABLE:	NO
AWNING AVAILABLE:	NO

SUMMARY NOTES

Sign A - Proposed sign to fit in allowable SQFT. Chose purple letter faces due to light colored building facade
Sign B - Replacement Faces
Sign C - Replacement Aluminum Faces

SIGN SUMMARY

SIGN TYPE	SQ FT (CAL)	SQ FT (PRO)	MATERIAL	COLOR
MBTM-CLRWP-15	20	18.08	Stucco	Tan
MBTM-MULTI-TENANT-LP			Other	
ACM PANEL			-	
			-	
			-	

OVERALL SIGN CALCS

MAX ALLOWED	TOTAL
20	18.08

**SQ. FT. (CAL): THE CALCULATED SQ FT OF A SIGN WILL MAXIMIZE ALLOWABLE AREA AND MEET REQUIREMENTS
 **SQ FT (PRO): THE PROPOSED SQ FT OF THE SIGN THE SIGN MANF. IS PROPOSING
 **MATERIAL: MATERIAL OF FACADE THE SIGN IS BEING INSTALLED UPON
 **COLOR: COLOR OF FACADE THAT THE SIGN IS BEING INSTALLED UPON

TABLE OF CONTENTS

- Cover Page
- Page 2 - Site Plan
- Page 3 - Sign A
- Page 4 - Sign B
- Page 5 - Sign C

CONTACTS

PROJECT MANAGER:

H. SONSEDEK

T-MOBILE PROJECT MANAGER:

Rebecca Gluck

T-MOBILE DESIGN MANAGER:

Jayson Laporga

SIGN MANUFACTURER



APPROVAL STAMP

APPROVED
By Jayson Laporga at 4:08:24 PM, 11/27/2019

ADDITIONAL INFORMATION:

GENERAL NOTES & PERMIT TIMES:

Estimated 1 - 15 days lead time for permits with full submission.

ELECTRICAL ACCESS:

To be field verified

LANDLORD CRITERIA:

Unknown at this time

LOCAL CODE:

1sf per lin ft of bldg front: Interior lot max size of wall sign 20sf. Corner lot: max min 20sf/sign. In multi-tenant structure: Max size of wall sign is 20sf /tenant.

VARIANCE PROCESS:

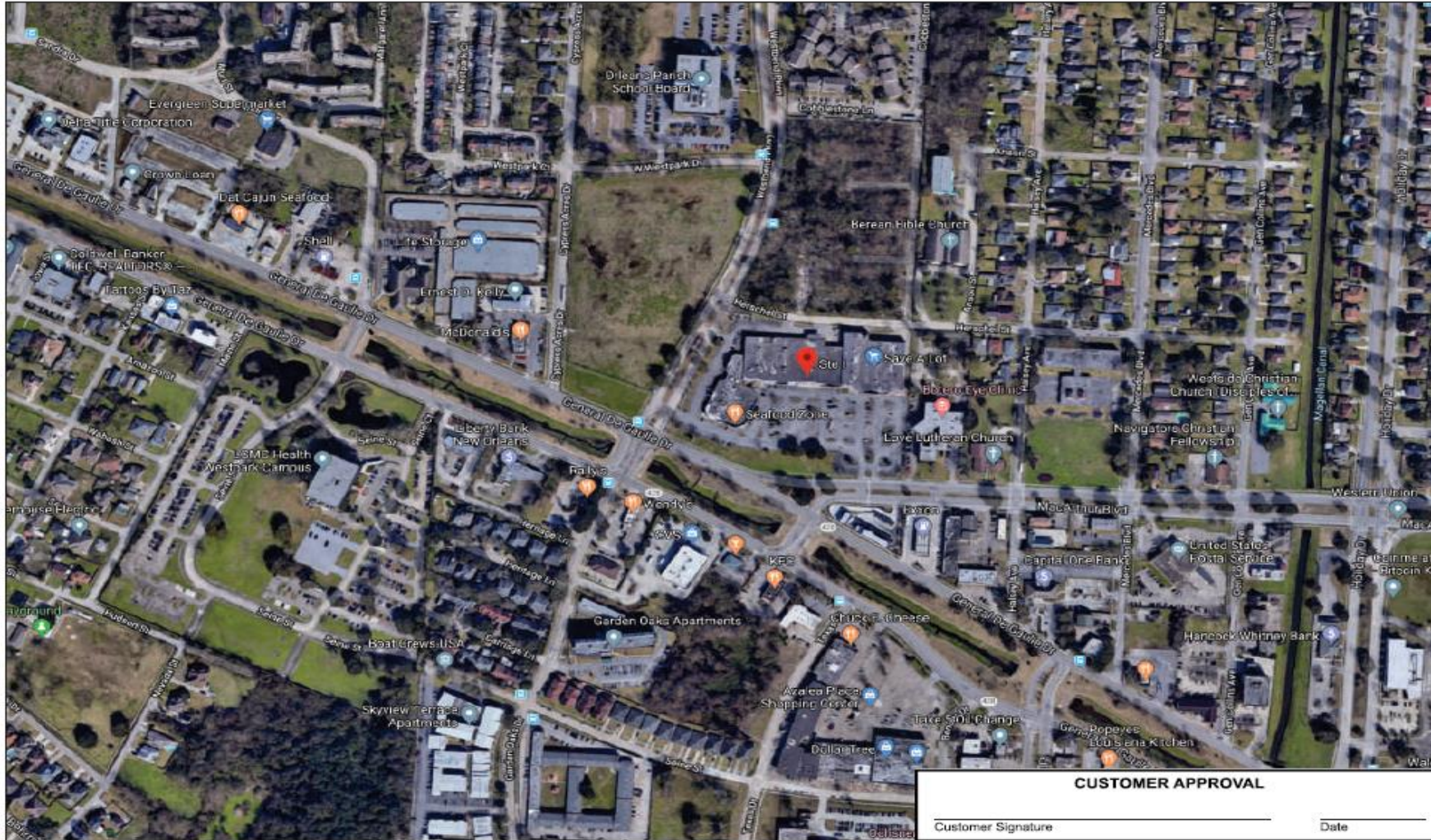
Variance available

REVISIONS:

DATE:	DESCRIPTION:
10/16/19	Initial Brand Book
11/02/19	Revision A
11/18/19	Revision B
01/30/20	Changed letterset styles
02.10.20	Updated with new survey info
03.02.20	Changed Sign A to MBTM-CLRWP-18-L
07.13.20	Added building dimensions and updated CL to fit in allowable

SITE PLAN

SIGNAGE SPECIFICATIONS



- A** MBTM-CLRWP-15
Manufacture and Install (1) set of Channel Letters
- B** MBTM-MULTI-TENANT-LP
Manufacture and Install (1) set of Tenant Replacement Panel Faces - Stacked
- C** ACM PANEL
ACM Panel with applied vinyl graphics



934 N. CHURCH RD., ELMHURST, IL 60126

South Water Signs #
7038272



ADDRESS
3600 MacArthur Blvd Ste 1
New Orleans Louisiana
70114-6852

PAGE #
2

CLIENT SIGNATURE	DATE	REVISIONS	
Nancy Luster	11/02/19	DATE:	DESCRIPTION:
		10/16/19	Initial Brand Book
		11/02/19	Rev A
		11/20/19	Rev B
		01/30/20	Changed letterset styles
		02.10.20	Updated with new survey info
		03.02.20	Changed Sign A to MBTM-CLRWP-18-L
		07.13.20	Added building dimensions and updated CL to fit in allowable

10254281_3600 MacArthur Blvd, New Orleans, LA

EXISTING PHOTO - SIGN A



Illuminated Stacked Channel Letters On Raceway

Side View

TOGGLE SWITCH/PHOTOCELL/TIMER IS REQUIRED.

SPECIFICATIONS:

"metro" and "comma":

FACES:..... .118" OPTIX 2406LD DIFFUSER ACRYLIC W/ PERFORATED MIRATEC FILM #47902-1 DEEP PURPLE OR ARLON DEEP PURPLE DUAL COLOR FILM #5597-0559048085597
 RETURNS:..... .040" X 5.3" ALUMINUM COIL PAINTED WHITE
 BACKS:..... .063" ALUMINUM
 TRIM CAP:..... 1" WHITE JEWELITE
 ILLUMINATION:.. SLOAN PRISM 6500K OR PRINCIPAL LEDS

"by T-Mobile":

FACES:..... .118" OPTIX 2406LD DIFFUSER ACRYLIC W/ TRANSLUCENT MIRATEC FILM #30532-1 MAGENTA OR ARLON TRANSLUCENT MAGENTA FILM #5450-0557048155450
 RETURNS:..... .040" X 3.5" ALUMINUM COIL PAINTED MATTHEWS MP 86055 MAGENTA
 BACKS:..... .063" ALUMINUM
 TRIM CAP:..... 1" JEWELITE PAINTED MATTHEWS MP 86055 MAGENTA
 ILLUMINATION:.. SLOAN PRISM 6500K OR PRINCIPAL LEDS

5" NARROW RACEWAY:

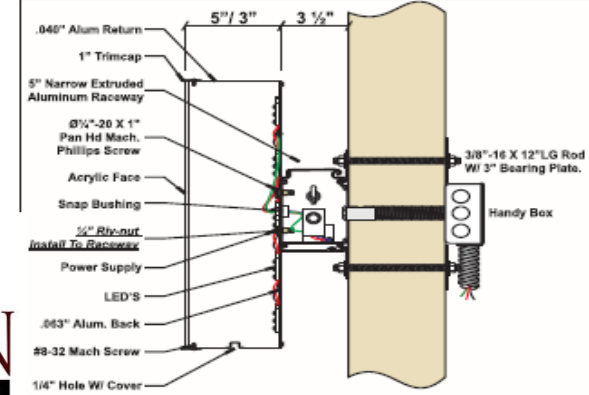
SIZE: 5" SIGN COMP EXTRUDED NARROW RACEWAY
 COLOR: PAINT TO MATCH FASCIA

SIGN MODEL	A	B	C	D	E	F	SQ FT
MBTM-CLRWP-15	1'-3"	2'-8 1/2"	6'-8 1/8"	10 3/4"	5"	3"	18.08

PHOTO ENHANCEMENT - SIGN A



STACKED RW CUT SECTION



SECTION DETAIL - CHANNEL LETTERS ON RACEWAY
N.T.S.

Electrical notes:

1. All electrical components to be UL approved
2. Customer is responsible for one (1) 120v/ 20a dedicated circuit with ground per sign within 6' of sign.
3. Lockout switch installed at panel box for all electrical signs.
4. Install in accordance with N.E.C. Article 600 and/ or local codes. This includes proper grounding and bonding of signs.



DAMMON
ENGINEERING, INC.



South Water Signs #
7038272



ADDRESS: 3600 MacArthur Blvd Ste I
New Orleans Louisiana
70114-6852

PAGE #
3

CLIENT SIGNATURE

APPROVAL DATE

DATE

11/20/19

PM

Nancy Luster

DESIGN

SWS DESIGN

FILE NAME

10204201_3600 MacArthur Blvd, New Orleans, LA

REVISIONS

DATE:

10/16/19

11/02/19

11/20/19

01/30/20

02.10.20

03.02.20

07.13.20

DESCRIPTION:

Initial Brand Book

Rev A

Rev B

Changed letterset styles

Updated with new survey info

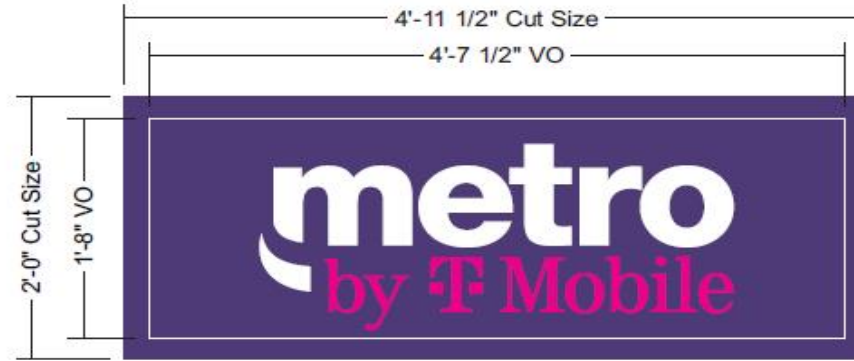
Changed Sign A to MBTM-CLRWP-18-L

Added building dimensions and updated CL to fit in allowable

EXISTING PHOTO - SIGN B



Sign B



FACE REPLACEMENT ONLY

PHOTO ENHANCEMENT - SIGN B



MBTM-MULTI-TENANT-SP

Tenant Panel Sign

1" = 1'

COLOR SCHEDULE

- Miratec Film #47899-1 Deep Purple or Arlon Translucent Purple Film #5460-0250048155460SL
- Translucent Miratec Film #30532-1 Magenta Printed On White Vinyl or Arlon Translucent Magenta Film #5450-0557048155450
- Plaskolite Polycarbonate TUFFAK SL White Faces

SPECIFICATIONS:

MANUFACTURE AND INSTALL TWO (2) SETS OF ACRYLIC FACES WITH VINYL FOR EXISTING TENANT PANELS. WHITE PLASKOLITE POLYCARBONATE TUFFAK SL FACES. RETROFIT IF POSSIBLE WITH 6500K WHITE LED. SEE COLOR SCHEDULE.



South Water Signs #
7038272



ADDRESS: 3600 MacArthur Blvd Ste I
New Orleans Louisiana
70114-6852

PAGE #
4

CLIENT SIGNATURE

DATE

11/20/19

PM

Nancy Luster

APPROVAL DATE

DESIGN

SWS DESIGN

FILE NAME

10.204.201_3600 MacArthur Blvd, New Orleans, LA

REVISIONS

DATE:

DESCRIPTION:

10/16/19

Initial Brand Book

11/02/19

Rev A

11/20/19

Rev B

01/30/20

Changed letterset styles

02.10.20

Updated with new survey info

03.02.20

Changed Sign A to MBTM-CLRWP-18-L

07.13.20

Added building dimensions and updated CL to fit in allowable

EXISTING PHOTO - SIGN C



Sign C

2'-6"



Aluminum Composite Material Panel
Scale: 1" = 1'-0"

ACM Panel with applied vinyl graphics

PHOTO ENHANCEMENT - SIGN C



COLOR SCHEDULE

- Miratec Film #47899-1 Deep Purple
or Arlon Translucent Purple Film #5460-0250048155460SL
- Translucent Miratec Film #30532-1 Magenta Printed On White Vinyl
or Arlon Translucent Magenta Film #5450-0557048155450

FACE REPLACEMENT ONLY



South Water Signs #
7038272



ADDRESS
3600 MacArthur Blvd Ste I
New Orleans Louisiana
70114-6852

PAGE #
5

CLIENT SIGNATURE

DATE

11/20/19

PM

Nancy Luster

DESIGN

SWS DESIGN

FILE NAME

10204281_3600 MacArthur Blvd_New Orleans, LA

REVISIONS

DATE:	DESCRIPTION:
10/16/19	Initial Brand Book
11/02/19	Rev A
11/20/19	Rev B
01/30/20	Changed letterset styles
02.10.20	Updated with new survey info
03.02.20	Changed Sign A to MBTM-CLRWP-18-L
07.13.20	Added building dimensions and updated CL to fit in allowable