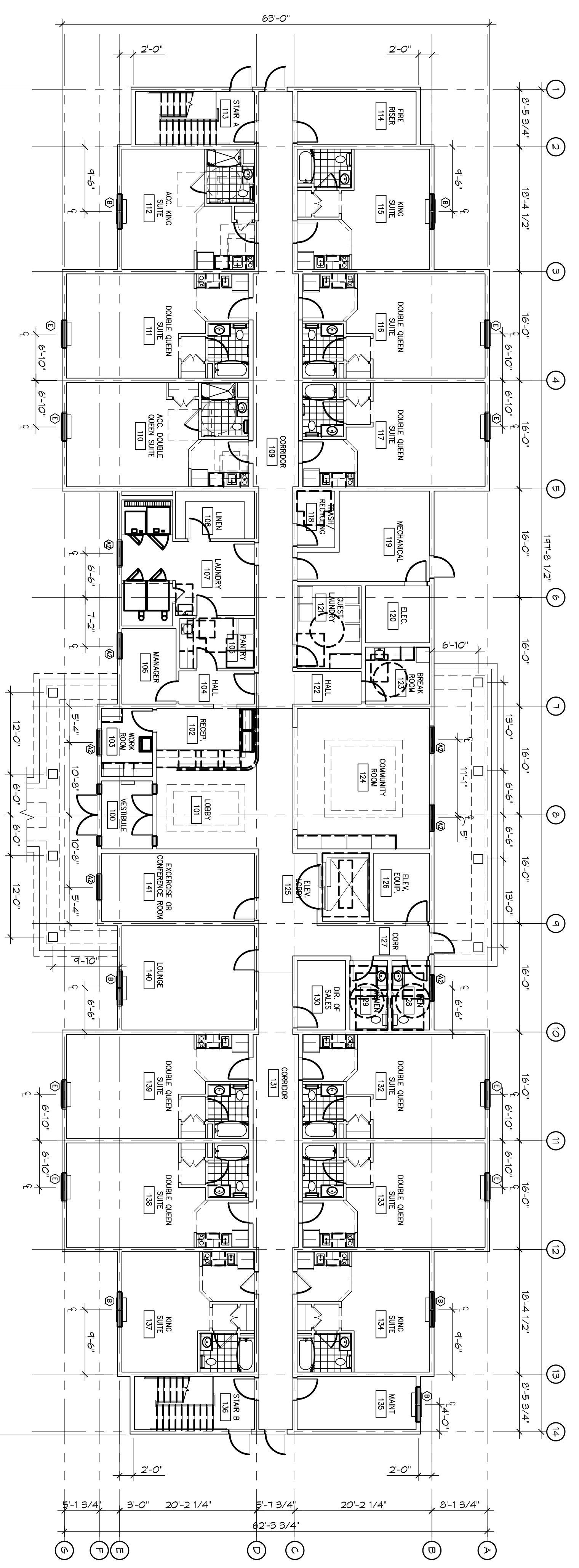


2 ARCHITECTURAL FLOOR PLAN - LEVELS 2 & 3
SCALE: 3/32" = 1'-0"
20 GUEST ROOMS EACH FLOOR



1 ARCHITECTURAL FLOOR PLAN - LEVEL 1
SCALE: 3/32" = 1'-0"
12 GUEST ROOMS

GENERAL NOTES

1. ALL DIMENSIONS ARE CENTRINE TO CENTERLINE OF GRID/WALL UNLESS NOTED OTHERWISE.
2. ALL FINISHES, FIXTURES, FURNITURE AND APPLIANCES THAT ARE SHOWN CONTRACTOR TO VERIFY THOSE ITEMS OWNER FINISHED AND CONTRACTOR INSTALLED (O/FI).
3. REFER TO PARTITION TYPES FOR PARTITION THICKNESS WHERE NOT SHOWN ON PLAN.
4. ALL MANUFACTURED ARTICLES, MATERIALS, AND EQUIPMENT SHALL BE CONDITIONED, USED APPLIED, INSTALLED, CONNECTED, ERECTED AND CLEANED IN ACCORDANCE WITH THE MANUFACTURERS WRITTEN SPECIFICATIONS OR INSTRUCTIONS.
5. FOR ALL WOOD MEMBERS REQUIRED BY CODE TO BE FIRE RETARDANT TREATED, PROVIDE FIRE RESISTANCE WITH FIRE RETARDANT WOOD SHALL BE IDENTIFIED WITH THE LABEL DESIGNATING THE CLASSIFICATION AND BY DIMENSION.
6. APPROVED FIRE EXTINGUISHERS SHALL BE PROVIDED LOCATED AND INSTALLED BY THE GENERAL CONTRACTOR, AS REQUIRED BY THE GOVERNING BODY. COORDINATE EXACT LOCATION WITH THE ARCHITECT.
7. ALL FIRE EXTINGUISHERS SHALL BE FIVE POUND, ABC, RATED FIRE EXTINGUISHER(S) AND/OR CABINET(S) WHERE SHOWN ON THESE PLANS.
8. ALL PENETRATIONS OF FIRE RESISTIVE FLOORS OR SHAFT WALLS SHALL BE PROTECTED BY MATERIALS AND INSTALLATION DETAILS THAT CONFORM TO THE STANDARDS FOR THROUGH PENETRATIONS (FRESTOP SYSTEMS). SEAL AROUND ALL PENETRATIONS (DOCS, PIPES, CONDENSERS, ETC.) WITH FIRE RESISTIVE MATERIALS (FIRESTOP, CONCRETE, OF ASSEMBLY, AT CONCRETE OR MASONRY, SEAL OFF OPENINGS WITH CONCRETE GROUT, AT PLASTER OR DRYWALL, DAMP GAP AND FILL WITH UL APPROVED SEALANT OR PUTTY PER MANUFACTURERS RECOMMENDATIONS.
9. MKAIP AROUND ALL ARCHITECTURAL, MECHANICAL, OR ELECTRICAL BOVES, RECESSED/PENETRATED INTO ANY FIRE-RATED WALLS WITH 5/8" TYPE "X" STRIP BOARD UNLESS WALL IS OF CONCRETE CONSTRUCTION.
10. SEE PROJECT SPECIFICATIONS FOR TOILET ACCESSORY HARDWARE SCHEDULE.
11. SEAL AROUND ALL PENETRATIONS DOCS, PIPES, CONDENSERS, ETC. AT PENETRATIONS THROUGH FIRE RESISTIVE WALLS WITH FIRE STOPPING RATING OF ASSEMBLY. CONCRETE OR MASONRY, SEAL OFF OPENINGS WITH CONCRETE GROUT. AT PLASTER OR DRYWALL, DAMP GAP AND FILL WITH UL APPROVED SEALANT OR PUTTY PER MANUFACTURERS RECOMMENDATIONS.

REVISIONS		DATE
#	DESCRIPTION	

DAMMON ENGINEERING, INC.
LOUISIANA & MISSISSIPPI

Chief Engineer: Brian Mistich, PE
554 Old Spanish Trail
Slidell, LA 70458

www.dammonengineering.com
info@dammonengineering.com
PH: 985.649.5832 F: 985.641.5950

SPORTSMAN'S CLUB

LOT #1 LA HWY 21
HACKBERRY, LA 70645

JOB No: 2265 DATE: NOVEMBER, 2015
DRAWN BY: JTL CHECKED BY: CKD

SHEET TITLE:
ARCHITECTURAL FLOOR
PLANS - LEVEL 1, 2, 4, 5,
SCHEME A

DRAWING NUMBER:
A101