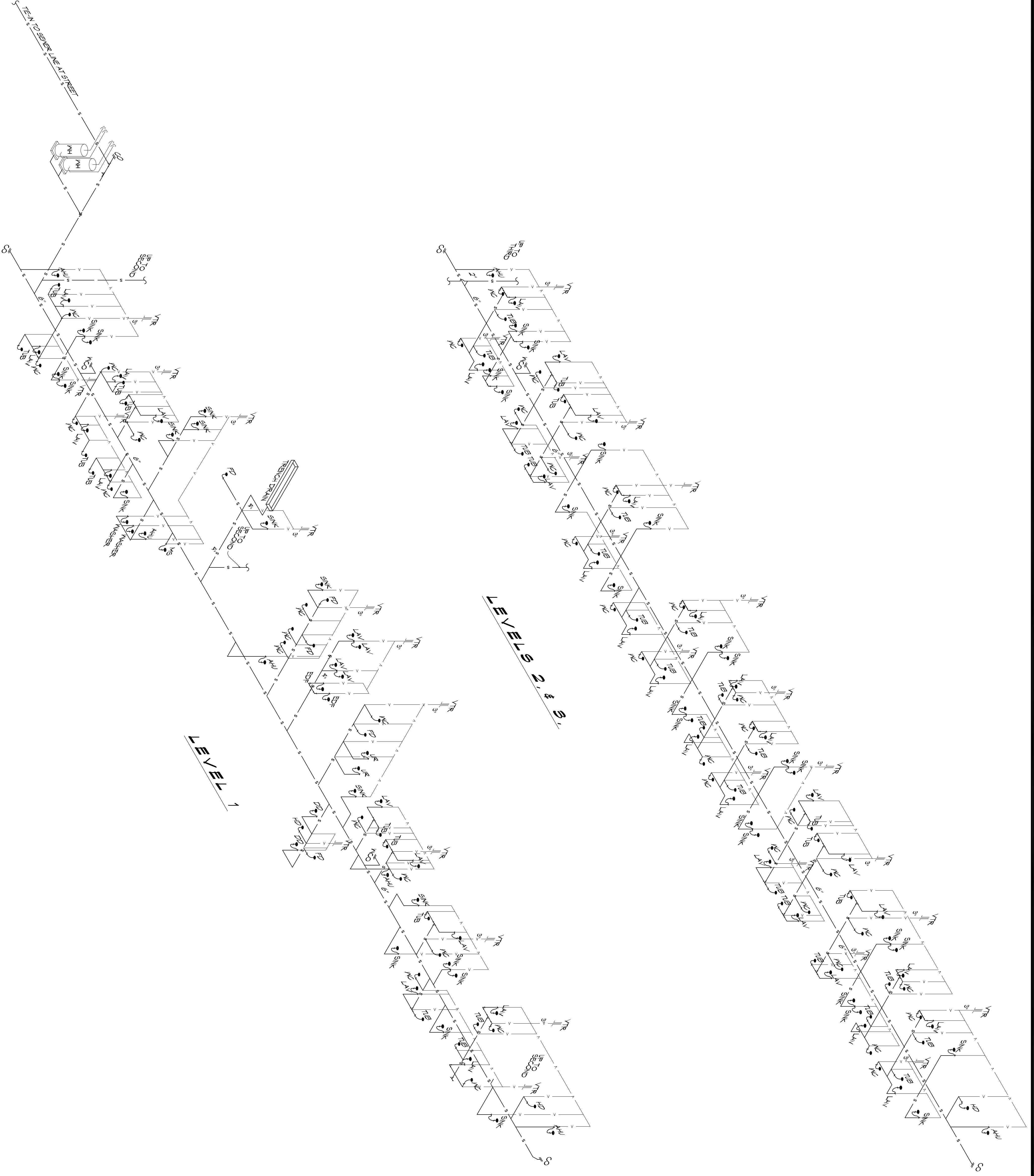


1 PLUMBING SANITARY RISER DIAGRAMS

SCALE: NTS



P102

DRAWING NUMBER:

SHEET TITLE:
PLUMBING RISER DIAGRAMS

MAINSTAY SUITES

700 MAIN STREET
LOT #1 LA HWY 21
HACKBERRY, LA 70645

JOB No: 2265 DATE: JANUARY, 2016

DRAWN BY: JTL CHECKED BY: CKD

We warrant that the drawings and specifications, design and construction requirements hereby set forth shall conform to the requirements of the applicable laws and regulations of the State of Louisiana and shall be the property of Dammon Engineering, Inc. and no part thereof shall be copied, reproduced, or otherwise used in connection with any work or project other than the specific project for which the drawings and specifications were prepared without the written consent of Dammon Engineering, Inc. All rights reserved. Please contact us with any questions or requests for clarification. We warrant that the drawings and specifications shall constitute the entire and exclusive contract between us and the client.

SCALE:

REVISIONS		
#	DESCRIPTION	DATE

DAMMON ENGINEERING, INC.

LOUISIANA & MISSISSIPPI

Chief Engineer: Brian Mistich, PE
554 Old Spanish Trail
Slidell, LA 70458

www.dammonengineering.com
info@dammonengineering.com
PH: 985.649.5832 F: 985.641.5950

