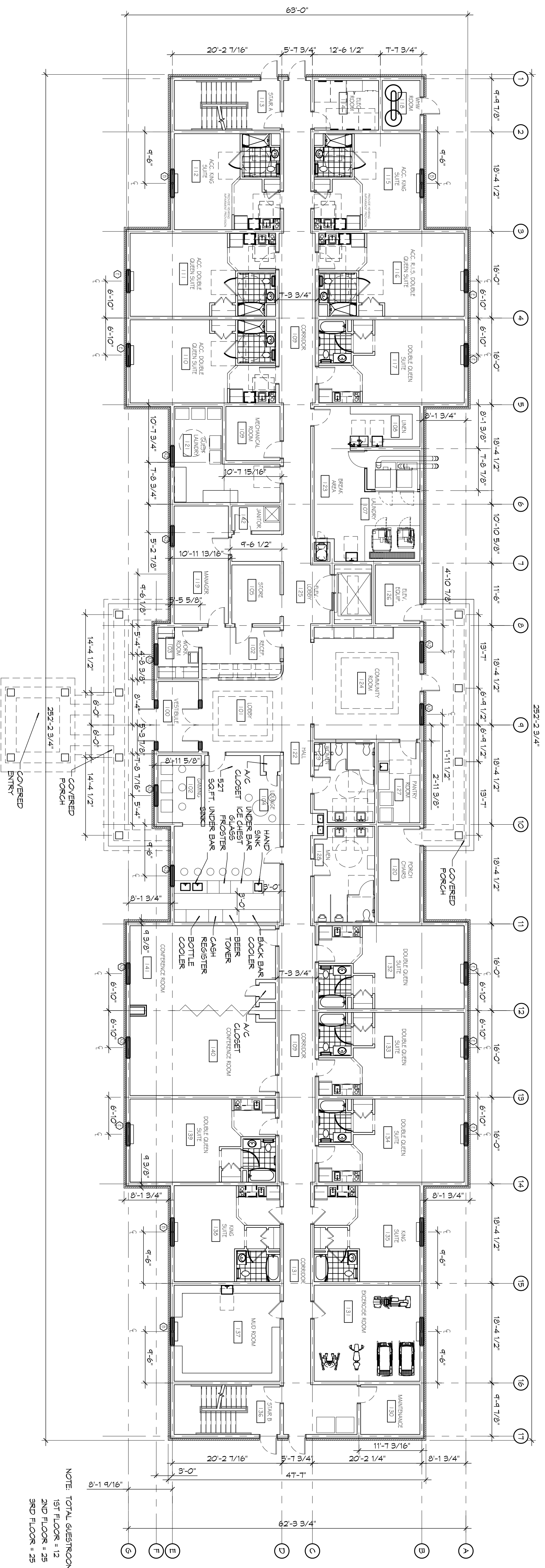


2 ARCHITECTURAL FLOOR PLAN - LEVELS 2 & 3
SCALE: 3/32" = 1'-0"

25 GUESTROOMS EACH FLOOR



1 ARCHITECTURAL FLOOR PLAN - LEVEL 1
SCALE: 3/32" = 1'-0"

13 GUESTROOMS

NOTE: TOTAL GUESTROOMS = 62
1ST FLOOR = 12
2ND FLOOR = 25
3RD FLOOR = 25

SHEET NO.:

A101

10 OF 10

DRAWING NUMBER:

SHEET TITLE:
ARCHITECTURAL FLOOR
PLANS - LEVEL 1, 2, 3,
SCHEME A

**MAIN STAY
SUITES**

100 MAIN STREET
LOT #1 LA HWY 27
HACKBERRY, LA 70645

JOB No: 2265 DATE: JANUARY, 2016

DRAWN BY: JTL CHECKED BY: CKD

The above drawings and specifications, depths and engineering registered hereby and shall remain the property of Dammon Engineering, and no part thereof shall be copied, reproduced, or used in connection with any work or project other than that specifically intended for which they have been prepared and approved without written consent of Dammon Engineering. Please contact with those drawings or specifications that constitute the contract. Dammon Engineering, Inc. is not responsible for any errors or omissions.

**PRELIMINARY
NOT FOR
CONSTRUCTION**

SCALE:

#	DESCRIPTION	DATE

REVISIONS

DAMMON
ENGINEERING, INC.
LOUISIANA & MISSISSIPPI

Chief Engineer: Brian Mistich, PE
554 Old Spanish Trail
Stidell, LA 70458

www.dammonengineering.com
info@dammonengineering.com
PH: 985.649.5832 F: 985.641.5950