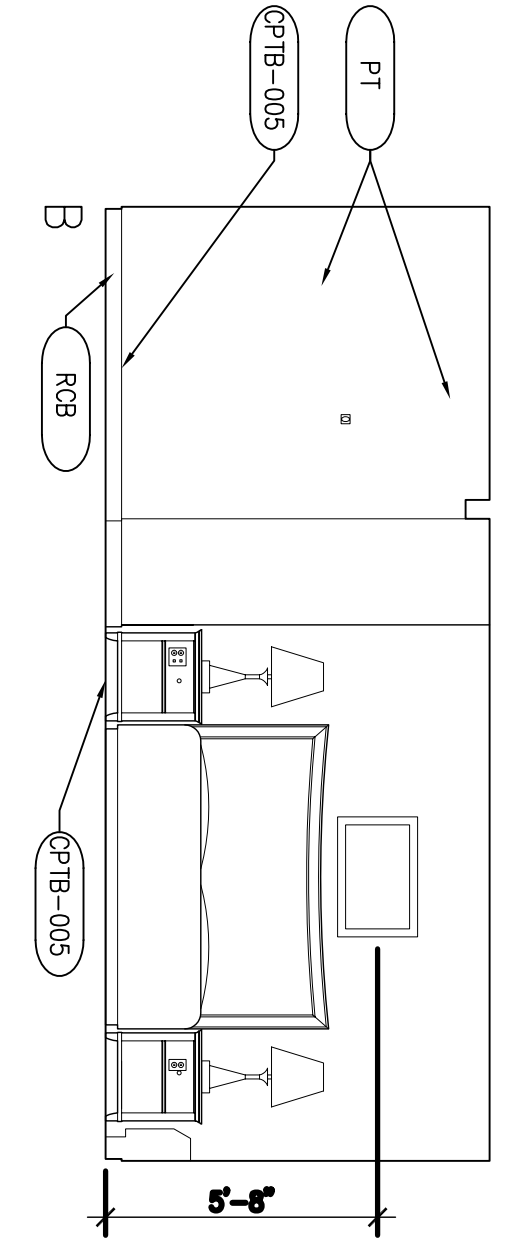
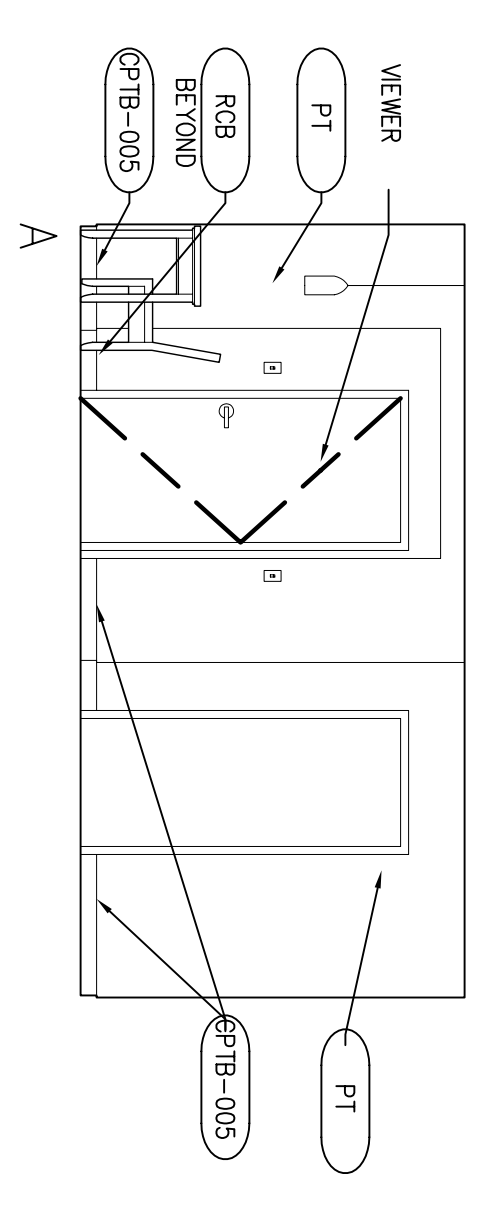
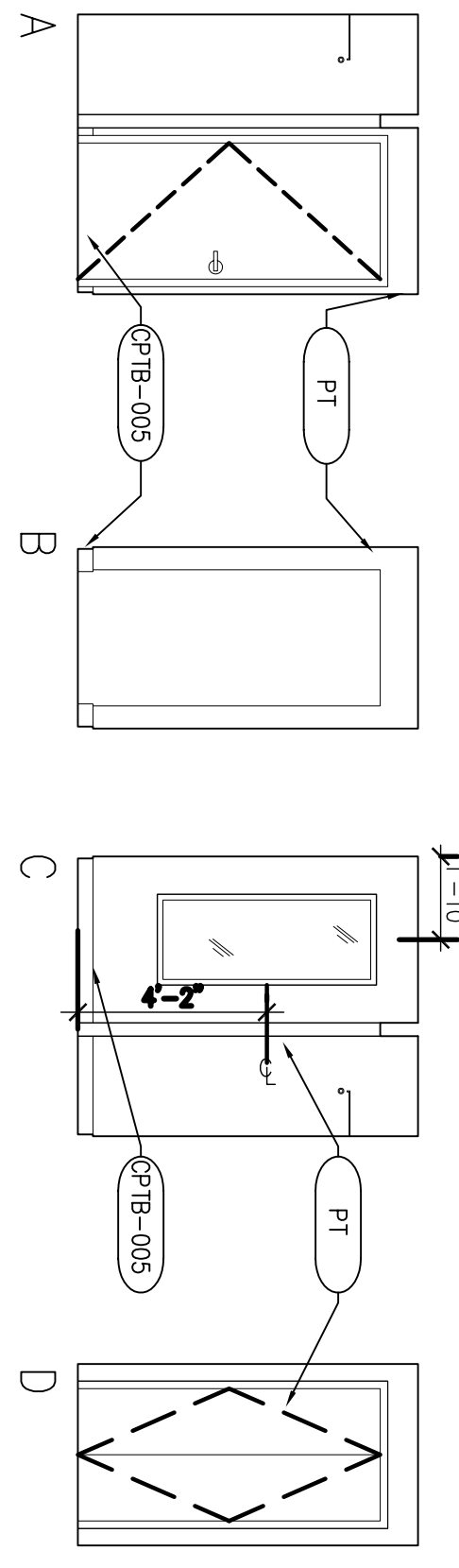
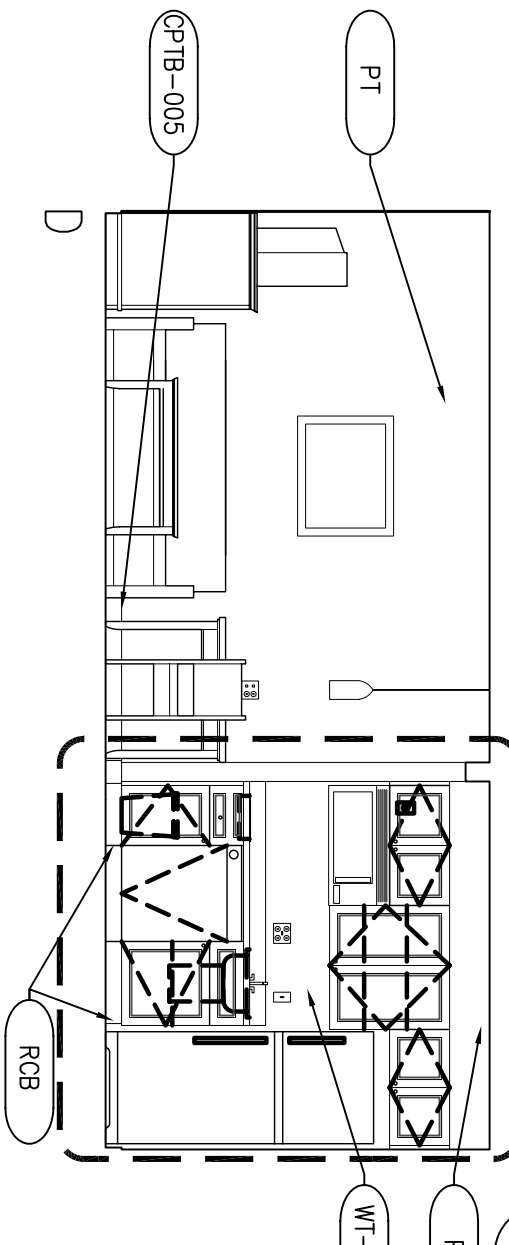
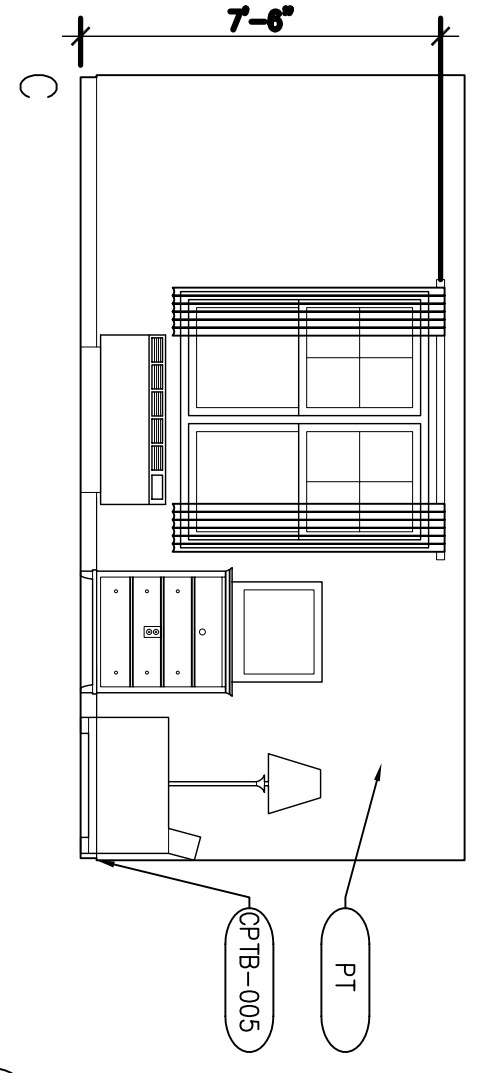


INTERIOR ELEVATIONS
SCALE: 1/4"=1'-0"



INTERIOR ELEVATIONS
SCALE: 1/4"=1'-0"



INTERIOR ELEVATIONS
SCALE: 1/4"=1'-0"

GUESTROOM GENERAL NOTES

1. REFER TO 1/8" FLOOR PLANS FOR OVERALL GUESTROOM AND WINDOW DIMENSIONS. UNDO.
2. GRID LINES ARE LOCATED AT THE CENTERLINE OF STUDS.
3. OVERALL ROOM DIMENSIONS ARE FROM CENTERLINE OF STUD TO CENTERLINE OF STUD. INTERIOR DIMENSIONS ARE FROM FACE OF FINISH TO FACE OF FINISH. UNDO.
4. FOR DETAILED SECTIONS, A SECTIONS OF KITCHEN CABINETS, BATHROOM CABINET, 4 DRESSING ROOM CLOSET SYSTEM. REFER TO SHEET A.002 A.003.
5. PLUMBING CHASE SHALL HAVE A FIRESTOP AT EACH FLOOR.
6. MAINTAIN, BY CODE, MINIMUM REQUIRED SEPARATION BETWEEN GUESTROOMS AT PLUMBING CHASE WALLS.

GUESTROOM CEILING NOTES

1. TYPICAL CEILING FINISH HEIGHT SHALL BE 8'-0" CLEAR AFFR TO TOPS. 1 THROUGH 3). UNDO. 9'-0" FOURTH FLOOR HEIGHT.
2. TYPICAL CEILING FINISH HEIGHT FOR BATHROOMS AND DRESSING ROOMS SHALL BE 7'-6" CLEAR AFFR. UNDO.
3. TYPICAL CEILING FINISH FOR BEDROOMS, LIVING ROOMS, AND DRESSING ROOMS SHALL BE TEXTURED PAINTED GYP BD. UNDO.
4. TYPICAL CEILING FINISH FOR BATHROOMS AND KITCHENS SHALL BE SMOOTH PAINTED GYP BD. UNDO.
5. SOFFITS SHALL BE SMOOTH PAINTED FINISH ON GYP BD.
6. CENTER SINGLE SURFACE MOUNTED LIGHT FIXTURES IN CEILING. UNDO.
7. CENTER SPRINKLER HEADS IN SPACES.

AREA	WALLS	TRIMS	DOORS	FLOORS	COMMENT	BASE	CEILING	OTHER
GUESTROOM	VL-005	PT-005	PT-005	CPT-005	USE	CPTD-005	CPTB-005	
KITCHEN	VL-005			WF-005			RCB-005	
BATHROOM	VL-006	PT-005	PT-005	CT-005			CTB-005	

GENERAL FINISH NOTE: REFER TO REF FOR CEILING FINISH. REFER TO FPE PLAN FOR FLOOR FINISH. REFER TO INTERIOR ELEVATIONS FOR WALL FINISH.

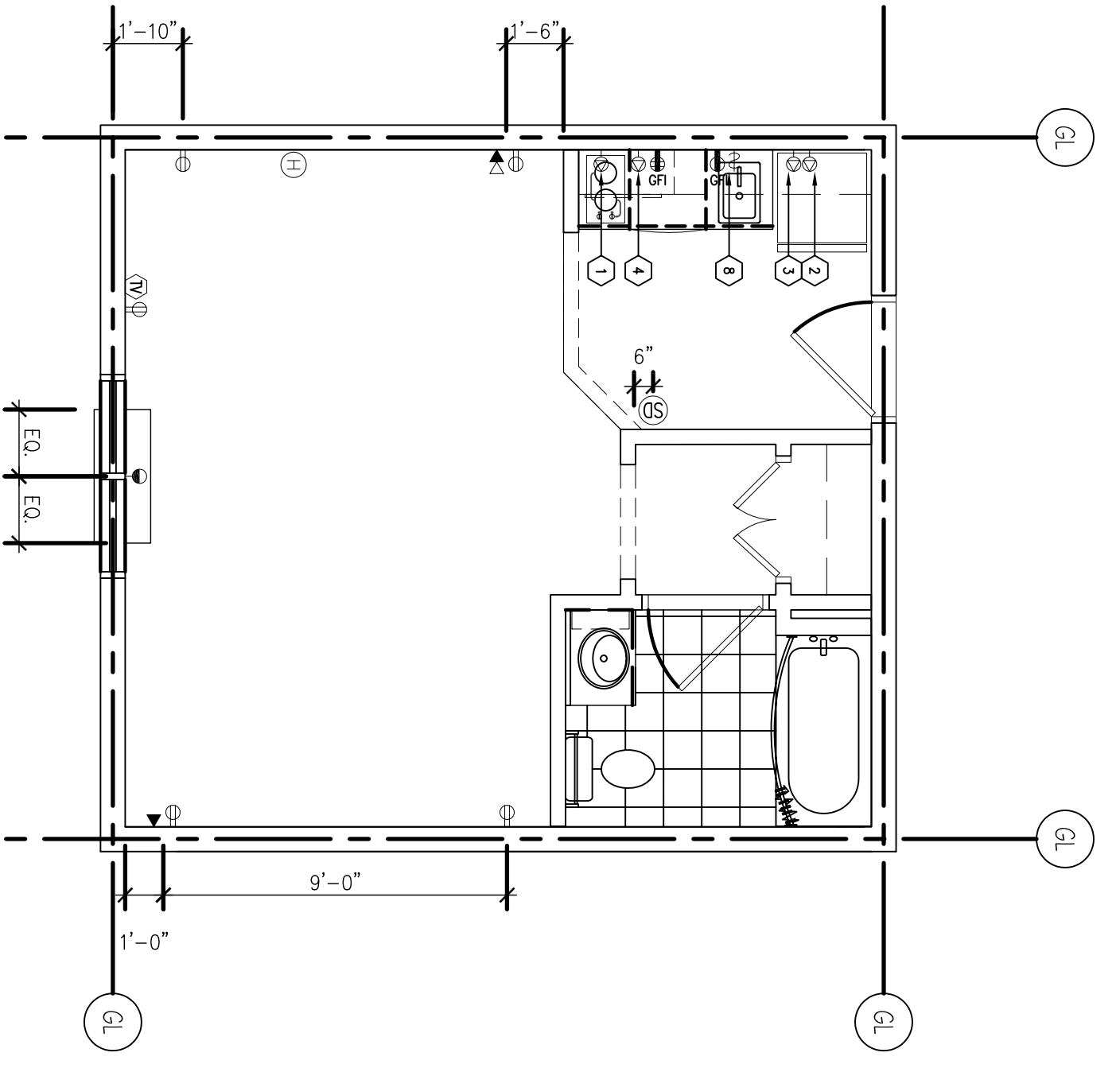
LIGHT & POWER SYMBOLS LEGEND

Symbol	Description
☉	CEILING MOUNTED LIGHT FIXTURE
◆	PENDANT LIGHT FIXTURE
⊙	FLOOR LAMP
⊕	DESIGNABLE LAMP
⊖	SMOKE DETECTOR
⊕	DOOR BELL W/ LIGHT (MEASURING IMPAIRED ROOMMATE)
⊖	TELEPHONE CONNECTION
⊕	CABLE TV CONNECTION
⊖	TELEPHONE CONNECTION
⊕	COMPUTER/DATA OUTLET
⊖	THERMOSTAT
⊕	EXHAUST FAN
⊖	DUPLEX RECEPTACLE
⊕	QUADPLEX RECEPTACLE
⊖	G.F.I. RECEPTACLE
⊕	SPECIAL RECEPTACLE
⊖	P1AC RECEPTACLE
⊕	DUPLEX RECEPTACLE & TELEPHONE OUTLET W/ COMMON PLATE
⊖	DUPLEX RECEPTACLE, TEL/COMP DATA OUTLET W/ COMMON PLATE
⊕	GFI RECEPTACLE/SINGLE POLE SWITCH WITH COMMON PLATE
⊖	SINGLE POLE SWITCH
⊕	DOUBLE POLE SWITCH
⊖	THREE WAY SWITCH
⊕	FOUR WAY SWITCH
⊖	WALL MOUNTED OCCUPANCY SENSOR W/ SWITCH

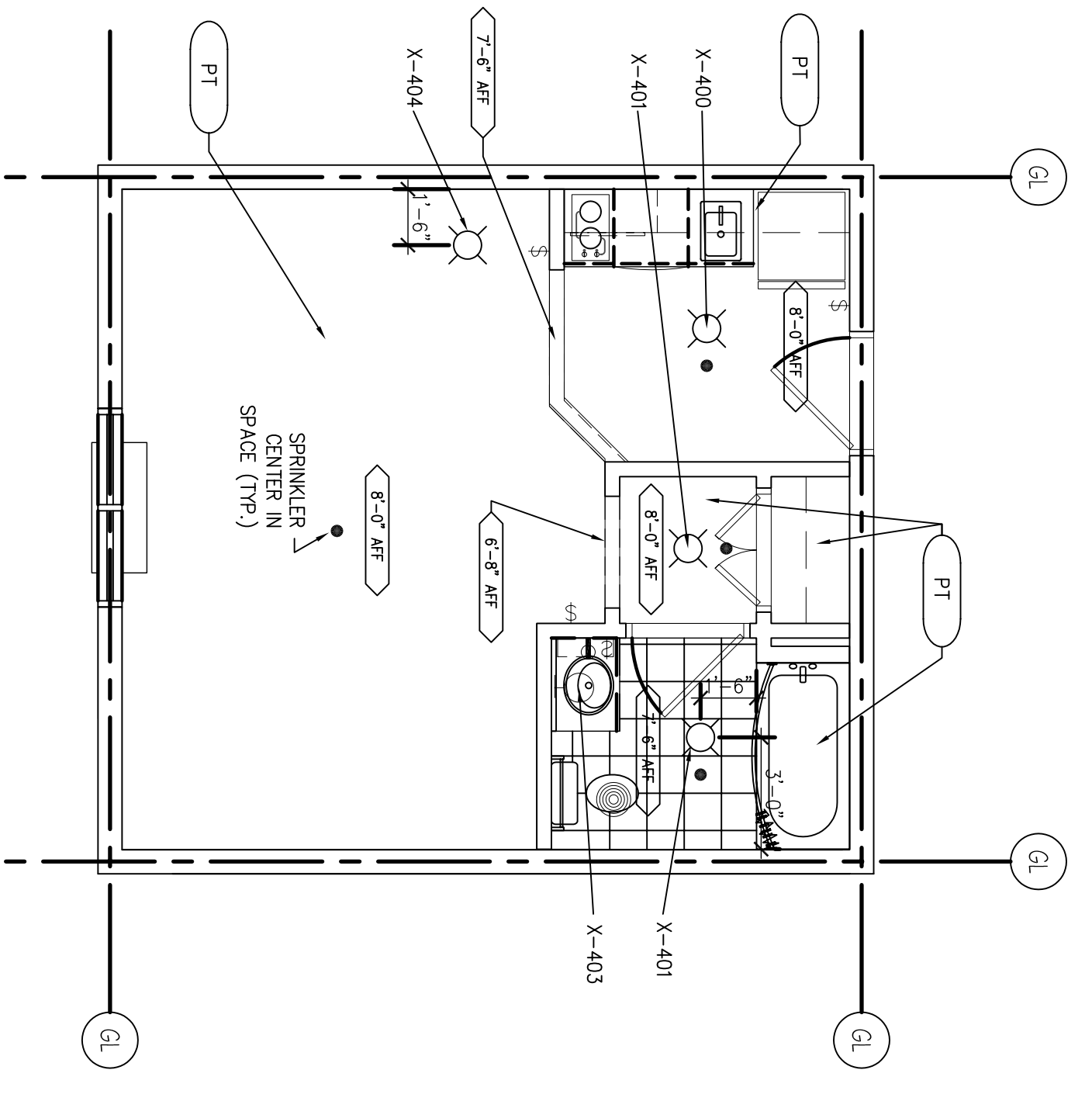
TOILET & BATH ACCESSORY SCHEDULE

ITEM#	DESCRIPTION	LOC.
TA-05	TOILET	PRG, GR, ADA, GR
TA-06	CONTINUOUS TOILET GRAB BAR (SURFACE MOUNTED)	ADA, GR
TA-07	SINK / COUNTER MOUNTING (HEIGHT)	ADA, GR
TA-08	MIRROR, SURFACE MOUNTED (BOTTOM @ 40" AFF)	GR, 4 ADA, GR
TA-09	TOILET BAR (24" @ 54" AFF, 24" @ 42" SURFACE MOUNTED)	GR, 4 ADA, GR
TA-10	TOILET BAR (11" @ 54" AFF) SURFACE MOUNTED	GR, 4 ADA, GR
TA-11	TOILET TISSUE DISPENSER (SINGLE ROLL / RECESSED)	PRG, GR, ADA, GR
TA-12	TUB GRAB BAR, SURFACE MOUNTED (NON-ADJ/CPTED)	GR
TA-13	CHIBED SHOWER CURTAIN ROD SURFACE MOUNTED, (MOUNTING HEIGHT = SEE SCHEDULE)	GR, 4 ADA, GR
TA-14	FOLDING SHOWER SEAT, SURFACE MOUNTED	ADA, GR
TA-15	2" TUB GRAB BAR (HEAD END, SURFACE MTD)	ADA, GR
TA-16	24" TUB GRAB BAR, 2 RECD (SIDE WALL, SURFACE MTD)	ADA, GR
TA-17	24" TUB GRAB BAR (HEAD END, SURFACE MTD)	ADA, GR
TA-18	SHOWER GRAB BARS SURFACE MOUNTED	ADA, GR
TA-19	ROBE/COAT HOOK	GR
TA-20	ROBE/COAT HOOK, 48"	ADA, GR
TA-21	HAIR DRYER	GR, 4 ADA, GR
TA-22	SHUR HEAD & CONTROLS (MOUNTING HEIGHT = SEE SCHED)	GR
TA-23	SHUR HEAD & CONTROLS (MOUNTING HEIGHT = SEE SCHED)	ADA, GR
TA-24	CULTURED SHELF, 24"	GR
TA-25	SOAP DISH, 42"	GR, 4 ADA, GR

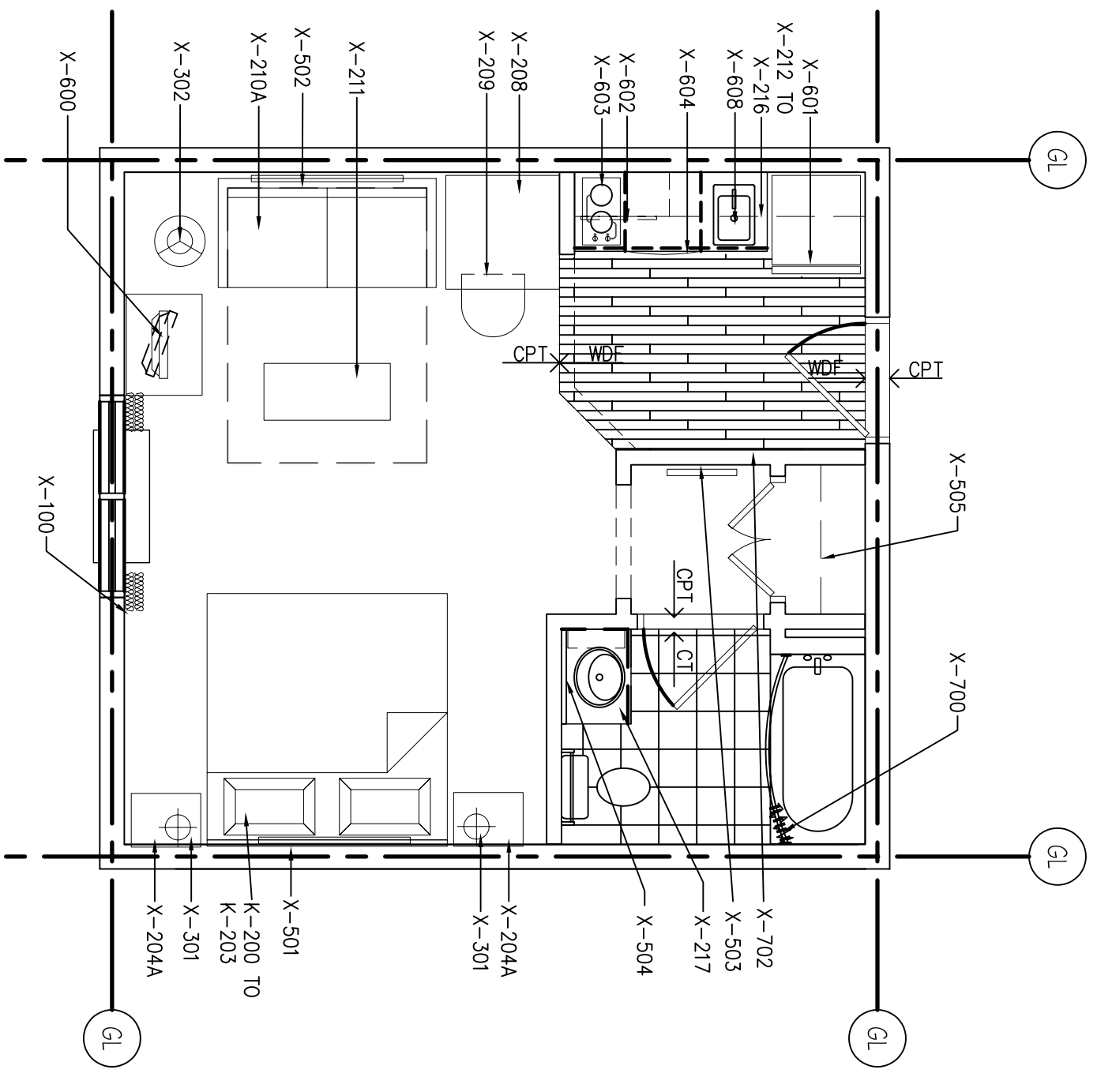
TOILET/BATH ACCESSORY NOTES:
1. PRG = PUBLIC RESTROOM
GR = GUESTROOM
ADA GR = ACCESSIBLE GUESTROOM



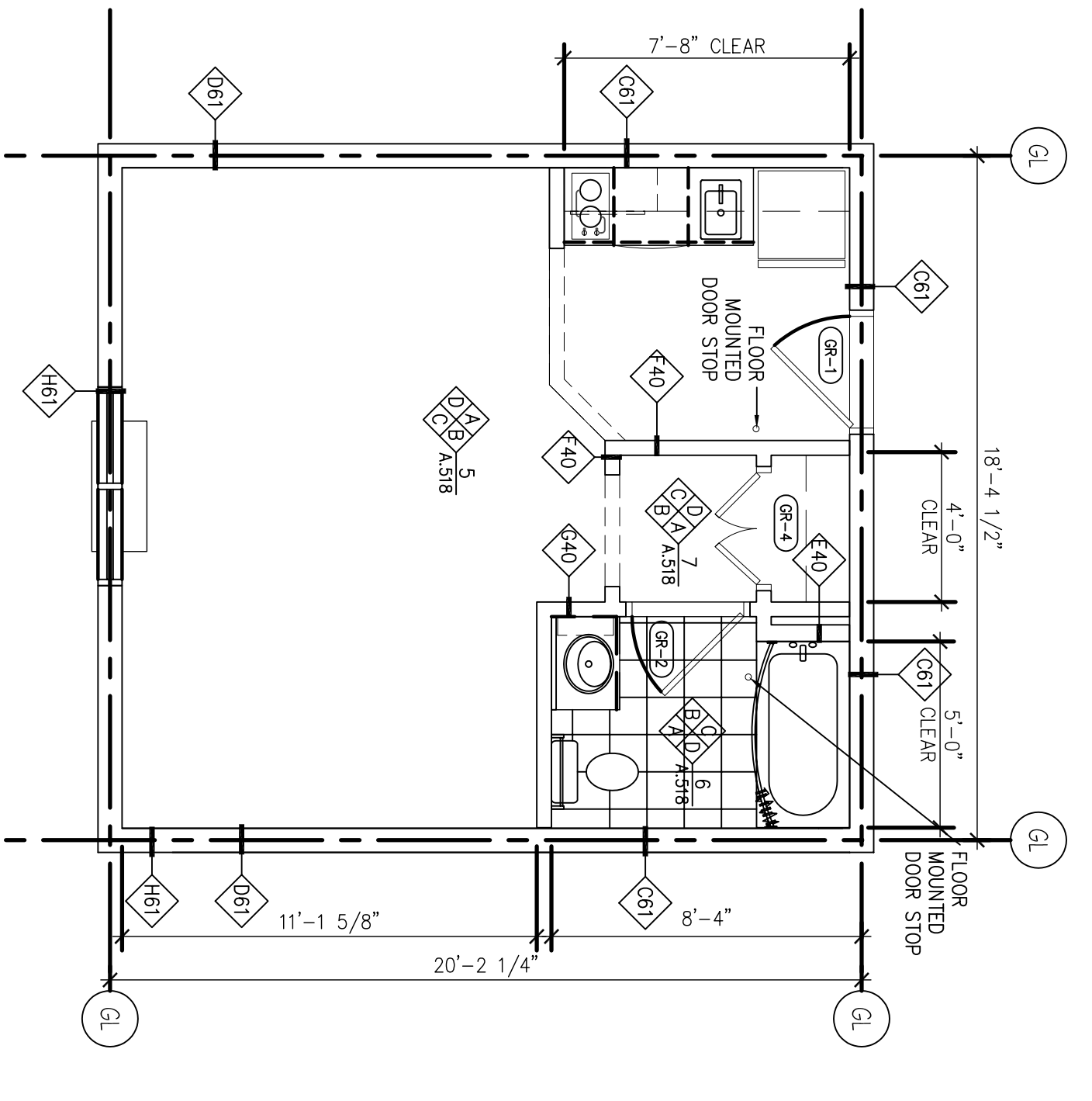
ELECTRIC DEVICE PLAN
SCALE: 1/4"=1'-0"



REFLECTED CEILING PLAN
SCALE: 1/4"=1'-0"



FLOOR FINISH/FFEE PLAN
SCALE: 1/4"=1'-0"



ARCHITECTURAL FLOOR PLAN
SCALE: 1/4"=1'-0"

DAMMON ENGINEERING, INC.
LOUISIANA & MISSISSIPPI

Chief Engineer: Brian Mistich, PE
554 Old Spanish Trail
Slidell, LA 70458

www.dammonengineering.com
info@dammonengineering.com
PH: 985.649.5832 F: 985.641.5950

REVISIONS

#	DESCRIPTION	DATE

SEAL: _____

PRELIMINARY NOT FOR CONSTRUCTION

MAINSTAY SUITES

100 MAIN STREET
LOT #1 LA HWY 27
HACKBERRY, LA 70645

JOB No: 2265 DATE: JANUARY, 2016
DRAWN BY: JTL CHECKED BY: [Signature]

AS14

10 OF 10