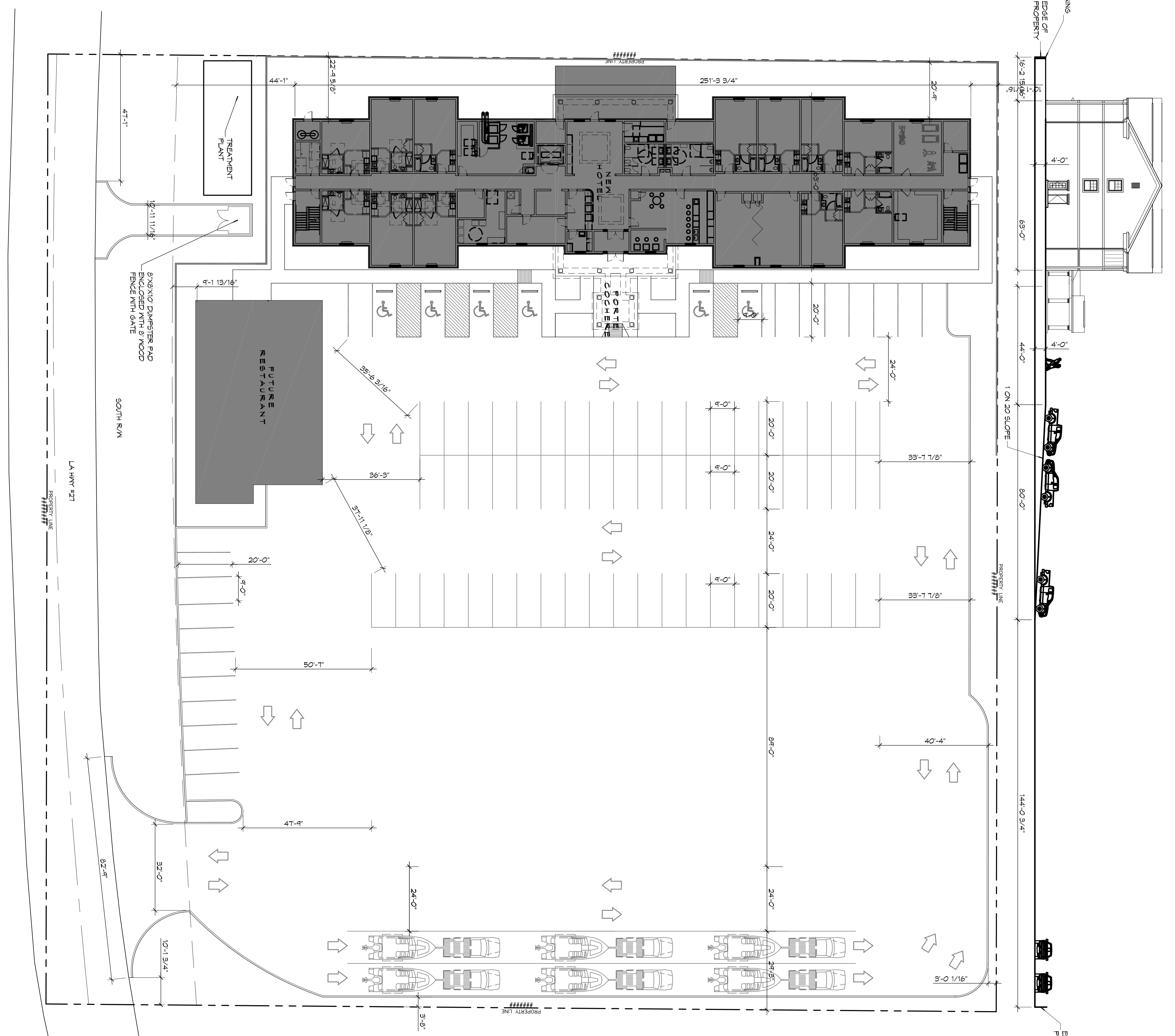


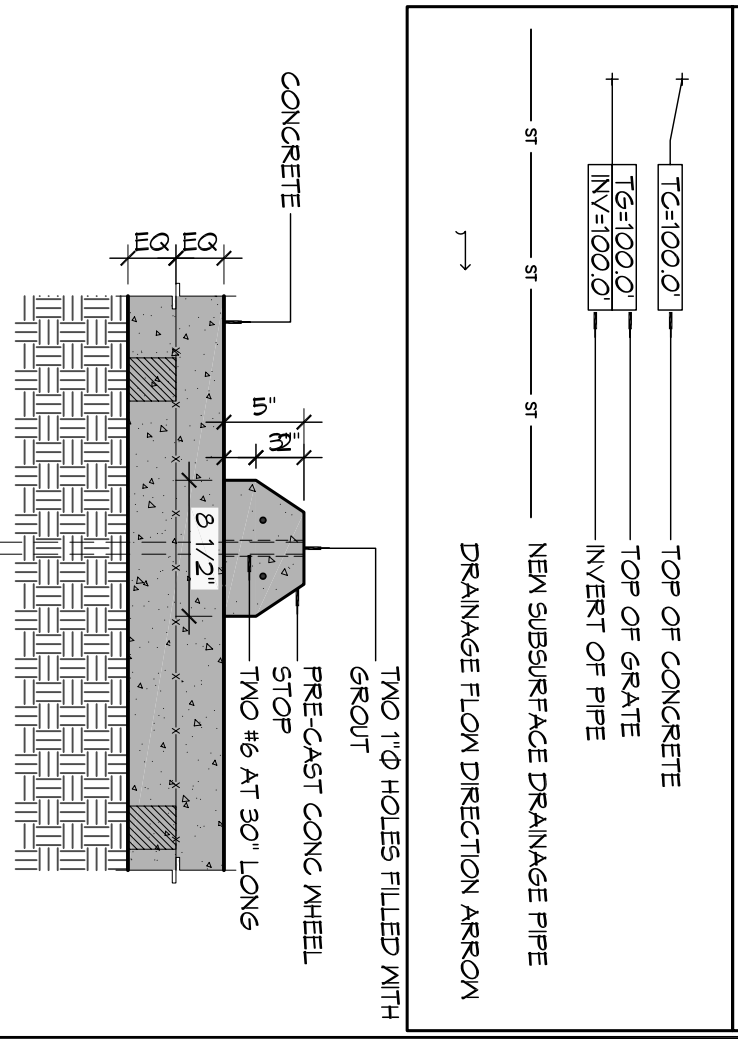
**1 SITE PLAN**  
SCALE: 1" = 20'



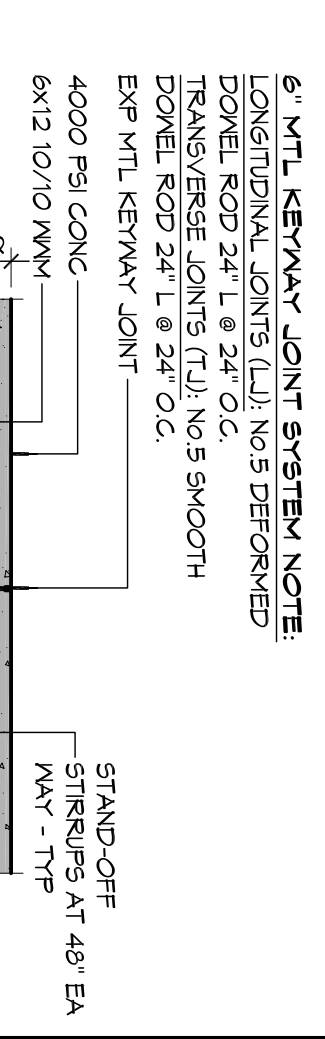
**GENERAL PAVING NOTES**

1. ALL NEW CONCRETE SHALL HAVE A MINIMUM COMPRESSIVE STRENGTH OF 4,000 PSI AT 28 DAYS AND A MINIMUM THICKNESS OF 6" CONCRETE MIX SHALL BE IN ACCORDANCE WITH THE LATEST REVISION OF ASTM C-150 TYPE 1.
2. CONCRETE PAVING THICKNESS SHALL VARY AS FOLLOWS:
  - a. AREAS (LOADING AREAS) 8" THICKNESS (INDICATED WITH CROSS HATCH WHERE OCCURS)
  - b. DRIVE LANES & PARKING AREAS 6" THICKNESS (STANDARD JACO)
3. ALL REINFORCING STEEL SHALL BE EASILY SPICED TO PREVENT BOTH VERTICAL AND HORIZONTAL COHERENT DRAG CONCRETE FROM BEING PLACED AND INSTALLED AS SHOWN ON THE PAVING PLAN AND IN ACCORDANCE WITH THE MANUFACTURER'S RECOMMENDATIONS.
5. ALL SUB GRADE FILL SHALL BE SELECT GRANULAR MATERIAL, COMPACTED TO 95% STANDARD PROCTOR DENSITY IN A MAXIMUM OF 6" LIFTS.
6. CONTRACTOR SHALL CONTACT THEIR REGULATORY DEPARTMENT OF ENGINEERING PRIOR TO CONDUCTING ANY WORK.
7. ANY WORK WITHIN THE ROADWAY OR ADJACENT TO THE ROADWAY CAUSING AN INTERFERENCE TO VEHICULAR TRAFFIC MUST CONFORM TO THE REQUIREMENTS SET FORTH BY THE UNIFORM MANUAL OF TRAFFIC CONTROL DEVICES OF THE STATE OF LOUISIANA. THE CONTRACTOR SHALL MAINTAIN THE EXISTING DRIVEWAY OR DRIVEWAYS AND MAINTAIN THEM DURING CONSTRUCTION ACTIVITY.
8. SEE SHEET C103 FOR SCHEDULED CATCH BASINS, TOP OF GRATE (TO) ELEVATIONS, AND INVERTS.

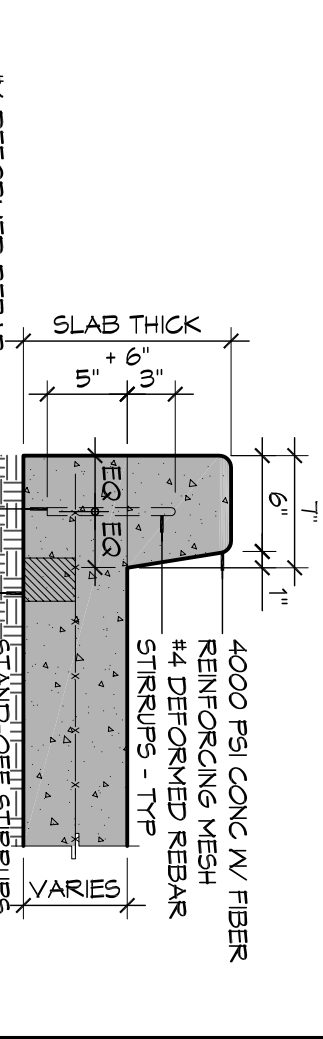
**SITE DRAINAGE LEGS**



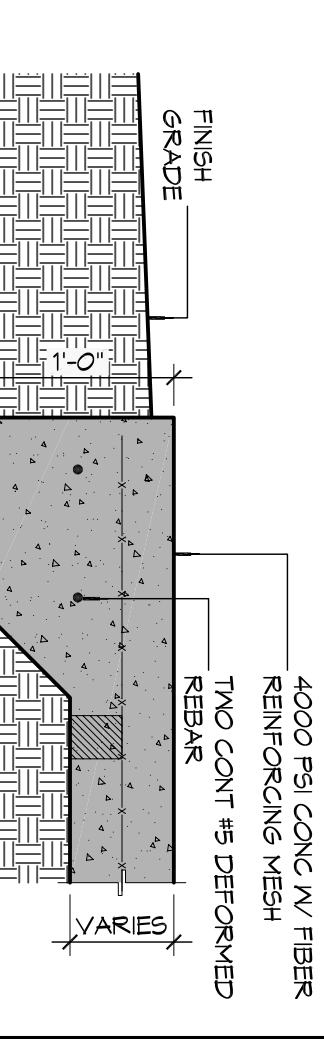
**TYPICAL BUMPER DETAIL**



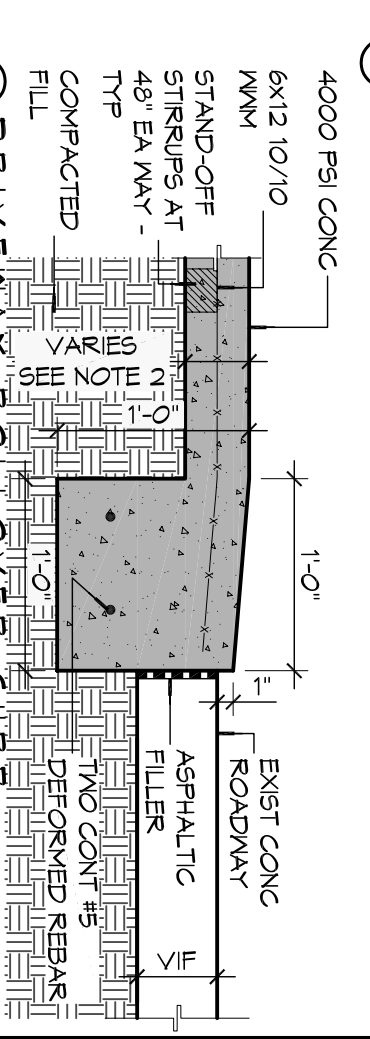
**TYPICAL PAVEMENT JOINT**



**TYPICAL WHEEL STOP**



**TYPICAL PAVEMENT EDGE**



| NO. | DESCRIPTION | DATE |
|-----|-------------|------|
|     |             |      |
|     |             |      |
|     |             |      |

**DAMMON ENGINEERING, INC.**  
LOUISIANA & MISSISSIPPI

Chief Engineer: Brian Mistich, PE  
554 Old Spanish Trail  
Slidell, LA 70458

www.dammonengineering.com  
info@dammonengineering.com  
PH: 985.649.5832 F: 985.641.5950

**PRELIMINARY NOT FOR CONSTRUCTION**

**MAINSTAY SUITES**

100 MAIN STREET  
LOT #1 LA HWY 27  
HACKBERRY, LA 70645

JOB No: 2265 DATE: JANUARY, 2016  
DRAWN BY: JTL CHECKED BY: [Signature]

SHEET TITLE: **1 SITE PLAN WITH BOAT PARKING**

DRAWING NUMBER: **C102**

SHEET NO: 6 OF 6