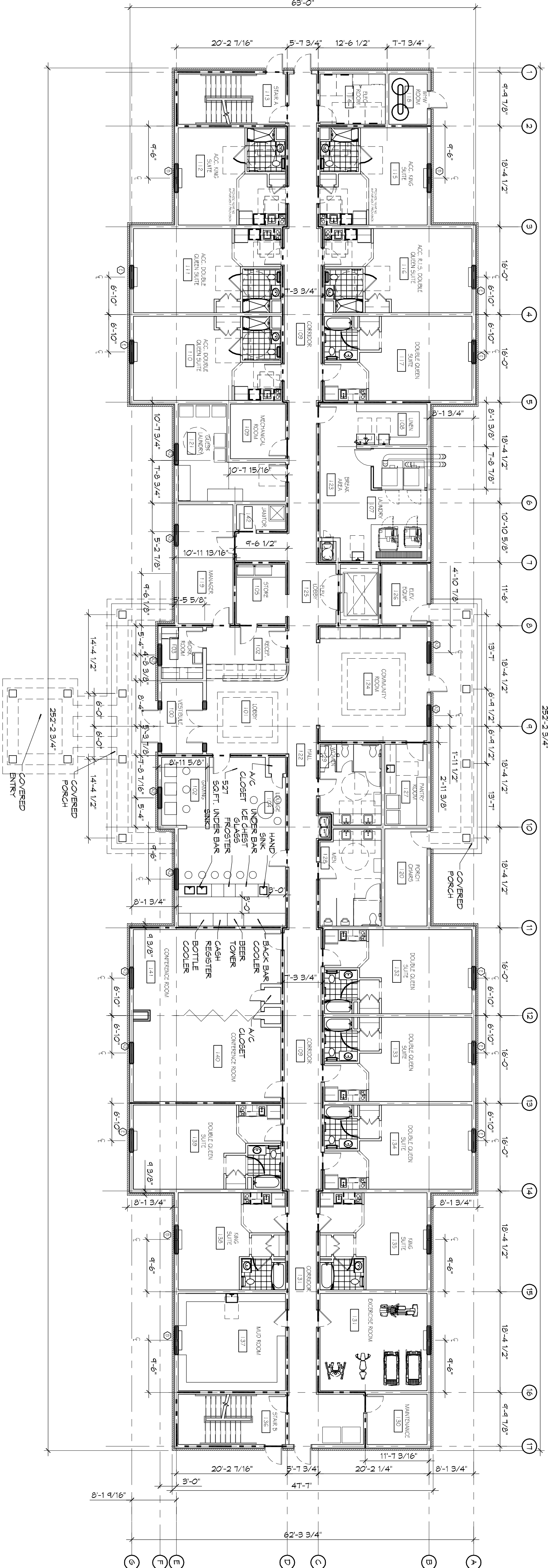


2 ARCHITECTURAL FLOOR PLAN - LEVELS 2 & 3
SCALE: 3/32" = 1'-0"

25 GUESTROOMS EACH FLOOR



1 ARCHITECTURAL FLOOR PLAN - LEVEL 1
SCALE: 3/32" = 1'-0"

12 GUESTROOMS

GENERAL NOTES

1. ALL DIMENSIONS ARE UNLESS OTHERWISE NOTED.
2. ALL FINISHES, FINISHES, PRINTS, AND APPLIANCES THAT ARE SHOWN AS GRAYED AND DASHED ARE TO BE OWNER PROVIDED AND NOT IN CONTRACT (NIC) AND ARE SHOWN FOR COORDINATION PURPOSES ONLY. CONTRACTOR TO VERIFY THESE ITEMS OWNER FURNISHED AND CONTRACTOR TO VERIFY THESE ITEMS OWNER REFER TO PARTITION TYPES FOR PARTITION THICKNESS WHERE NOT SHOWN ON PLAN.
3. ALL MANUFACTURED ARTICLES, MATERIALS, AND EQUIPMENT SHALL BE CONDITIONED USED APPLIED, INSTALLED, CONNECTED, ERECTED AND CLEANED IN ACCORDANCE WITH THE MANUFACTURER'S WRITTEN SPECIFICATIONS OR INSTRUCTIONS.
4. FOR ALL WOOD MEMBERS REQUIRED BY CODE TO BE FIRE RETARDANT TREATED, A TYPICAL FIRE RESISTANT FIRE RETARDANT TREATMENT SHALL BE IDENTIFIED WITH A LABEL, DETERMINING THE CLASSIFICATION AND FM DIVISION.
5. APPROVED FIRE EXTINGUISHERS SHALL BE FURNISHED LOCATED AND INSTALLED BY THE GENERAL CONTRACTOR, AS REQUIRED BY THE GOVERNING BODY. COORDINATE EXACT LOCATION WITH THE ARCHITECT.
6. ALL FIRE EXTINGUISHERS SHALL BE FIVE POUND, A8C RATED FIRE EXTINGUISHER(S) AND/OR CABINET(S) WHERE SHOWN ON THESE PLANS.
7. ALL PENETRATIONS OF FIRE RESISTIVE FLOORS OR SHIRT WALLS SHALL BE PROTECTED BY MATERIALS AND INSTALLATION DETAILS THAT CONFORM TO UL STANDARDS FOR THROUGH PENETRATIONS FIRESTOP SYSTEMS. SEAL AROUND ALL PENETRATIONS (DUCTS, PIPES, CONDUITS, OR OTHER PENETRATIONS) WITH FIRE RESISTANT MASONRY SEAL OFF OPENINGS WITH CONCRETE GROUT. AT PLAYERS OR DRUMWALL DRY UP GAPS AND FILL WITH UL APPROVED SEALANT OR PUTTY PER MANUFACTURER'S RECOMMENDATIONS.
8. MAKE AROUND ALL ARCHITECTURAL, MECHANICAL, OR ELECTRICAL BOXES RECEIVED/GENERATED INTO ANY FIRE RATED WALLS WITH 5/8" TYPE 'X' GYP/PM BOARD UNLESS FALL IS OF CONCRETE CONSTRUCTION.
9. SEE PROJECT SPECIFICATIONS FOR TOILET ACCESSORY HARDWARE SCHEDULE.
10. SEAL AROUND ALL PENETRATIONS (DUCTS, PIPES, CONDUITS, ETC.) AT NEW AND EXISTING FIRE-RATED ASSEMBLIES. SEAL SHALL SEAL OFF OPENINGS WITH CONCRETE GROUT. AT PLAYERS OR DRUMWALL DRY UP GAPS AND FILL WITH UL APPROVED SEALANT OR PUTTY PER MANUFACTURER'S RECOMMENDATIONS.

NOTE: TOTAL GUESTROOMS = 62
1ST FLOOR = 12
2ND FLOOR = 25
3RD FLOOR = 25

REVISIONS		DATE
#	DESCRIPTION	

DAMMON ENGINEERING, INC.
LOUISIANA & MISSISSIPPI

Chief Engineer: Brian Mistich, PE
154 Old Spanish Trail
Slidell, LA 70458

www.dammonengineering.com
Tel: 985.649.5832
Fax: 985.641.5950

**PRELIMINARY
NOT FOR
CONSTRUCTION**

MAINSTAY SUITES

100 MAIN STREET
LOT #1 LA HWY 27
HACKBERRY, LA 70645

JOB NO: 2265 DATE: FEBRUARY, 2016
DRAWN BY: JTL CHECKED BY: CKD

SHEET TITLE:
ARCHITECTURAL FLOOR
PLANS - LEVEL 1, 2, & 3,
SCHEME A

DRAWING NUMBER:
A101

SHEET NO. 10 OF 1