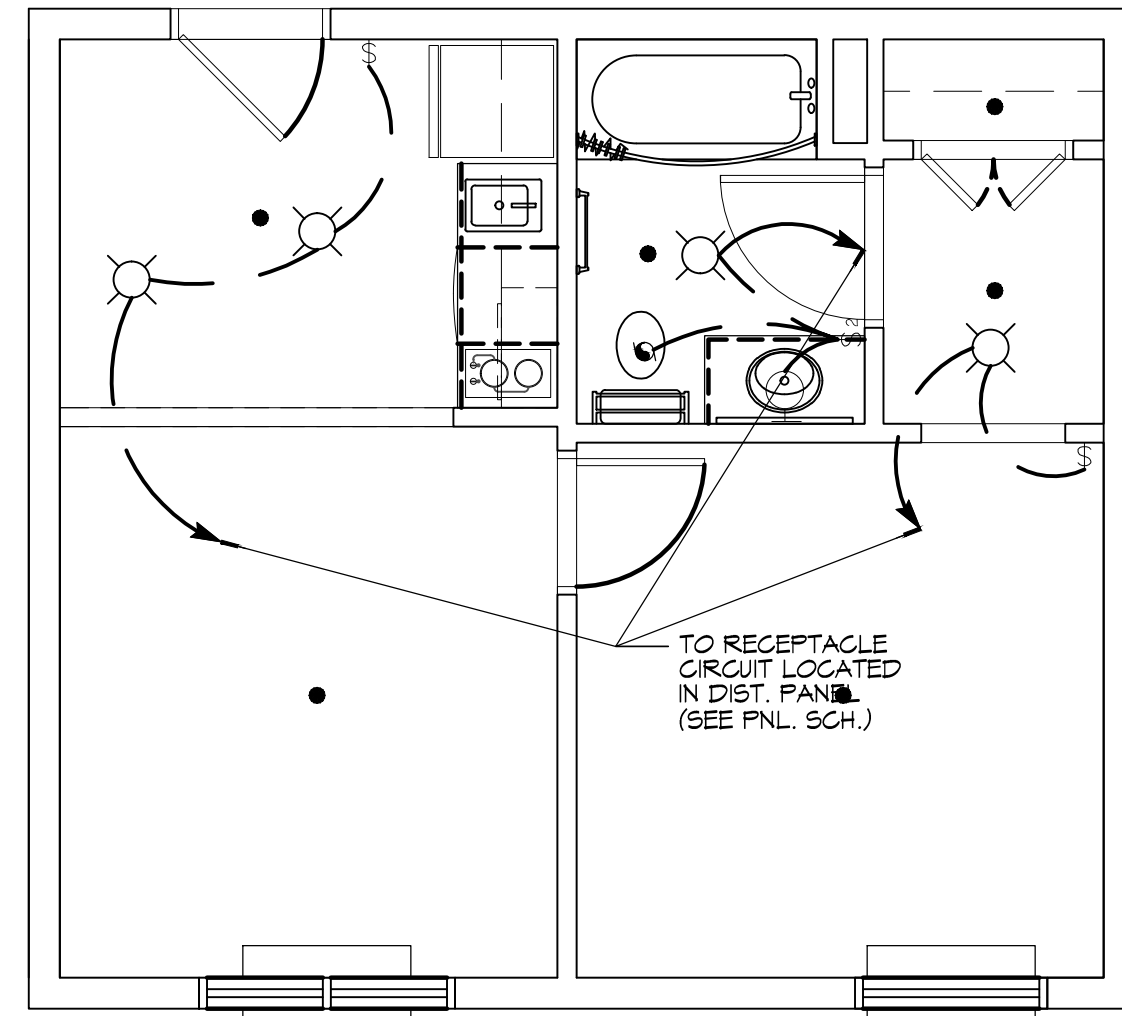
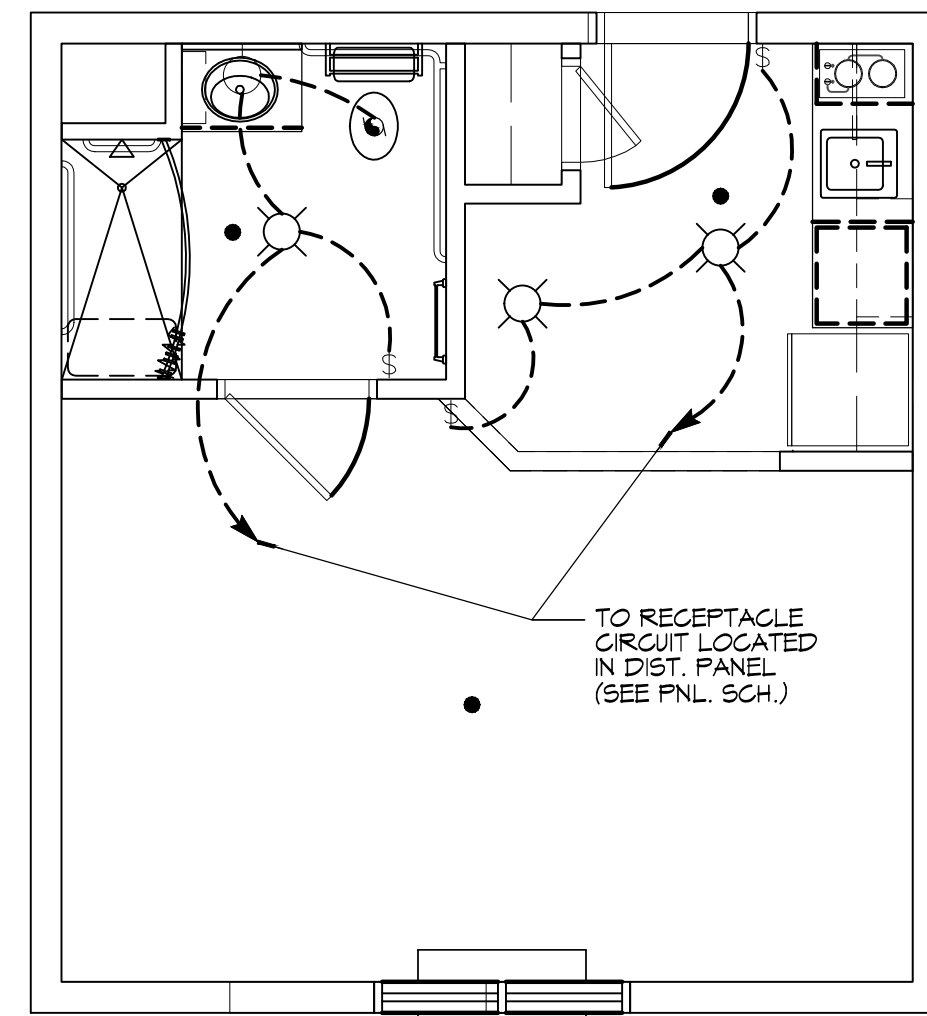


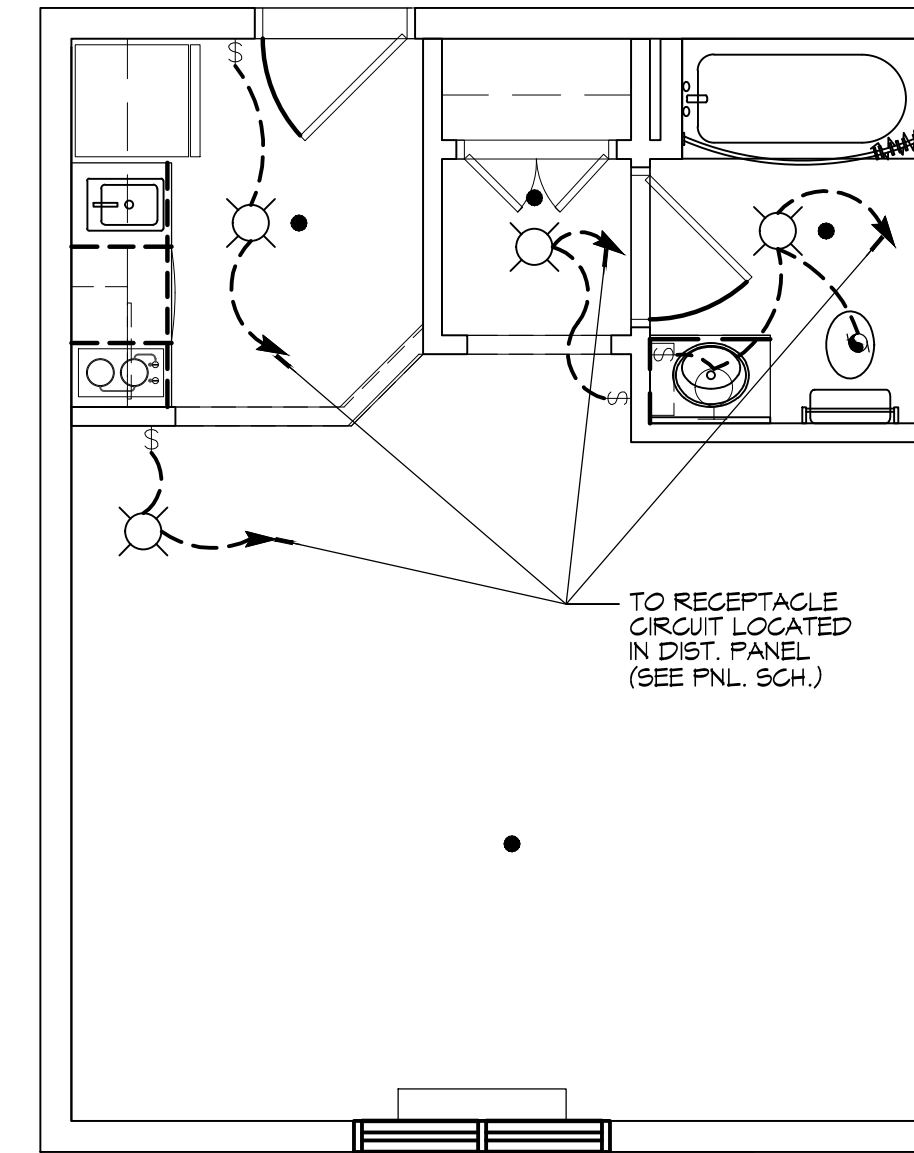
FILE NAME: A:\-New\2016\2016-02-01\2016-02-01-110314.dwg
 PLOT DATE: 2/1/2016 11:03:14 AM
 PLOT BY: JTL
 PROJECT: 2016-02-01-110314.dwg
 USER: JTL
 PLOT DATE: 2/1/2016 11:03:14 AM
 PLOT BY: JTL



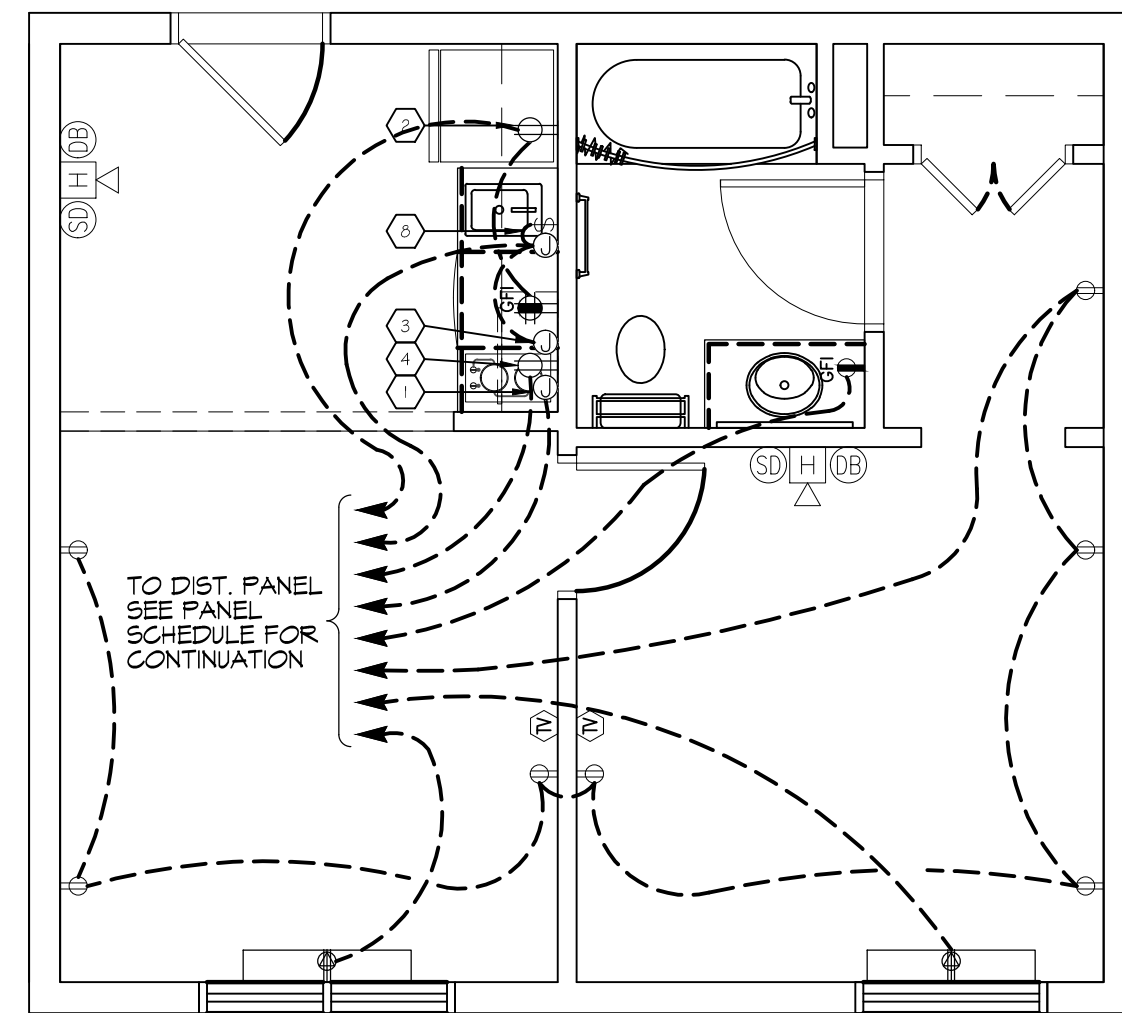
1 ACCESSIBLE ONE BEDROOM SUITE (LIGHTING)
SCALE: 1/4"=1'-0"



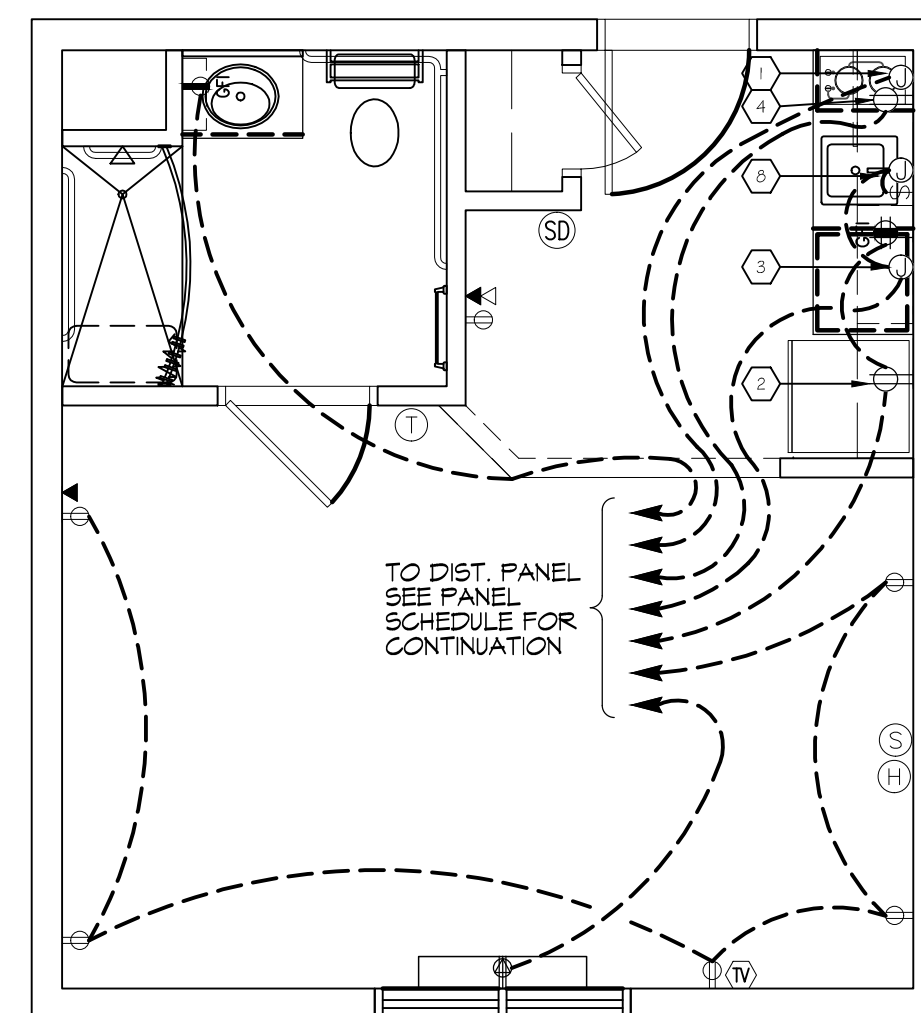
3 ACCESSIBLE KING SUITE (LIGHTING)
SCALE: 1/4"=1'-0"



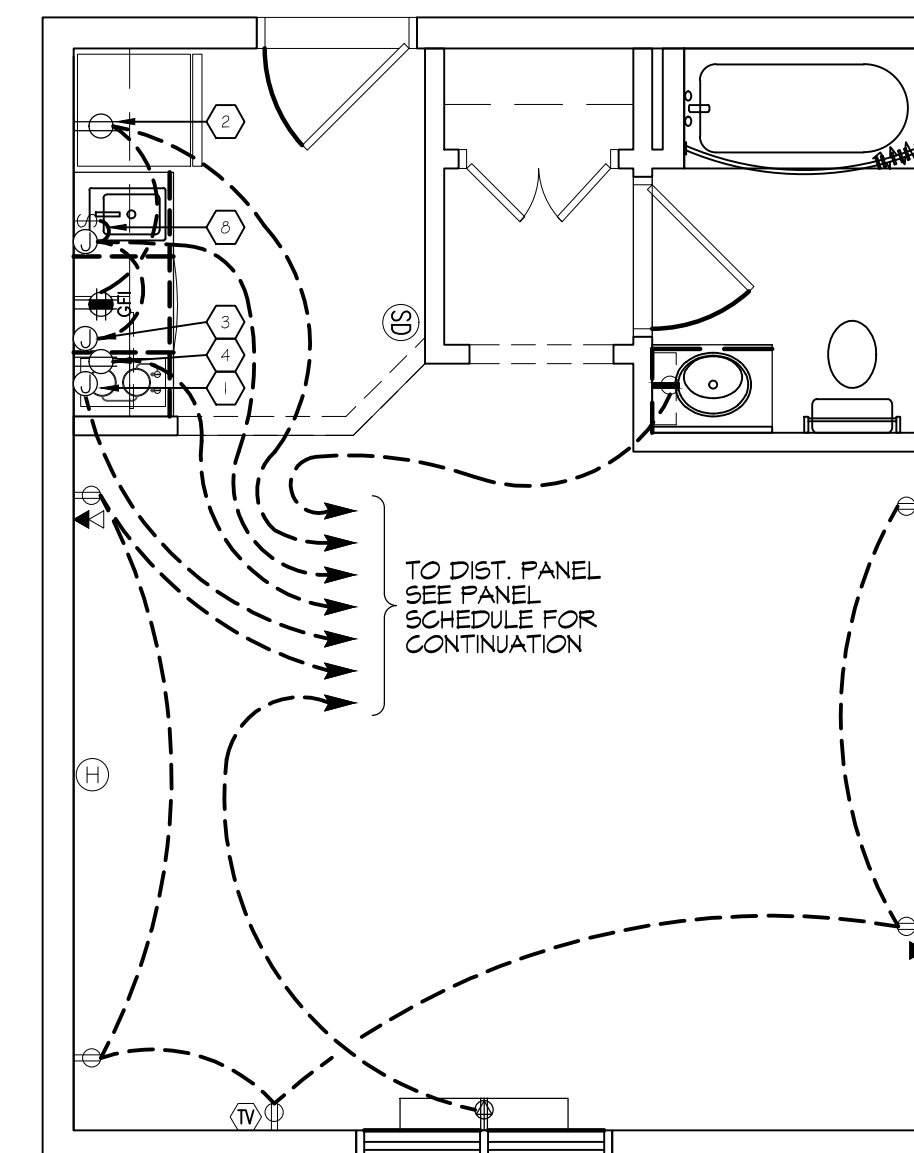
5 KING SUITE LARGE (LIGHTING)
SCALE: 1/4"=1'-0"



2 ACCESSIBLE ONE BEDROOM SUITE (POWER)
SCALE: 1/4"=1'-0"



4 ACCESSIBLE KING SUITE (POWER)
SCALE: 1/4"=1'-0"



6 KING SUITE LARGE (POWER)
SCALE: 1/4"=1'-0"

ELECTRICAL LEGEND - POWER

- SYMB
- ⊞ STANDARD 120V DUPLEX RECEPTACLE, NEMA 5-2 OR 18" AFF (UNLESS OTHERWISE NOTED)
 - ⊞ SINGLE-POLE DEDICATED RECEPTACLE - REFER TO PANEL SCHEDULE FOR CIRCUIT SIZE
 - ⊞ GFCI DUPLEX RECEPTACLE
 - ⊞ GFCI QUAD RECEPTACLE
 - ⊞ 208V DEDICATED RECEPTACLE
 - ⊞ 220V DEDICATED GFCI RECEPTACLE
 - ⊞ WEATHER-PROOF GFCI DUPLEX RECEPTACLE MOUNTED AT 30" AFF (UNLESS OTHERWISE NOTED)
 - ⊞ STANDARD 120V DUPLEX RECEPTACLE - FLOOR MOUNTED
 - ⊞ STANDARD QUAD RECEPTACLE - WALL-MOUNTED
 - ⊞ STANDARD QUAD RECEPTACLE - FLOOR MOUNTED
 - ⊞ 125V 15 AMP DUPLEX-USB 5VDC 3 AMP HUBBELL USB CHARGER RECEPTACLE
 - ⊞ 125V 15 AMP QUADPLEX-USB 5VDC 3 AMP HUBBELL USB CHARGER RECEPTACLE
 - ⊞ JUNCTION BOX
 - ⊞ GENERATOR BATTERY CHARGER GFI OUTLET
 - ⊞ 2-BUTTON PUSH BUTTON STATION
 - ⊞ COAX-CABLE CONNECTION FOR TELEVISION
 - ⊞ WALL MOUNTED DATA OUTLET
 - ⊞ FLOOR DATA OUTLET
 - ⊞ POWER DISCONNECT
 - ⊞ GAS WATER HEATER ON DECK OR MEZZANINE ABOVE - SIZE AS NOTED ON PLAN
 - ⊞ AIR CONDITIONING AIR HANDLING UNIT ON DECK OR MEZZANINE ABOVE, SEE MECHANICAL DRAWINGS
 - ⊞ AIR CONDITIONING CONDENSER UNIT ON CONCRETE PAD, SEE MECHANICAL DRAWINGS

- NOTES:
1. CONNECT ALL EMERGENCY/EXIT LIGHT FIXTURES TO NEAREST CONSTANT POWER SOURCE.
 2. THE #2 NEXT TO A RECEPTACLE OR DATA OUTLET DESIGNATES THAT THERE ARE TO BE TWO OUTLETS AT THAT LOCATION. ONE OVER THE OTHER (ONE HIGH & ONE LOW ON WALL). EXAMPLE: #2 OR #2
 3. REFER TO INTERIOR ELEVATIONS FOR MOUNTING HEIGHT AND ORIENTATION OF OUTLETS MOUNTED ABOVE COUNTERTOPS.
 4. ALL OUTLETS IN SUITES SHALL BE ARC FAULT.

ELECTRICAL LEGEND - LIGHTING

- ⊞ EMERGENCY LIGHT FIXTURE
- ⊞ EXIT LIGHT FIXTURE - WALL MOUNTED
- ⊞ EXIT LIGHT FIXTURE - CEILING MOUNTED
- ⊞ CEILING FAN
- ⊞ CLNG MTD FLOOR STRIP FIXTURE
- ⊞ RECESSED CEILING LIGHT FIXTURE
- ⊞ CLNG HUNG FLOOR STRIP FIXTURE
- ⊞ SURFACE MOUNTED LIGHT FIXTURE
- ⊞ WALL MOUNTED LIGHT FIXTURE
- ⊞ CLNG MTD FLOOR FIXTURE
- ⊞ OUTDOOR LIGHT ON PHOTO TIMER - MTD IN GROUND
- ⊞ PENDANT LIGHT FIXTURE
- ⊞ EXHAUST FAN - SEE MECH
- ⊞ ELECTRIC PANEL BOARD
- ⊞ CIRCUIT HOME RUN
- ⊞ WALL MTD SPEAKER - PROVIDE RATED HOUSING FOR RATED WALLS WHERE INDICATED
- ⊞ CLNG MTD SPEAKER - PROVIDE RATED HOUSING FOR RATED CEILING WHERE INDICATED
- * EXTEND TO FIXTURE(S) NOT SHOWN - SEE NOTE
- ⊞ LIGHT SWITCH 120V COMMERCIAL GRADE
- ⊞ LIGHT SWITCH - 3-WAY 120V COMMERCIAL GRADE
- ⊞ LIGHT SWITCH - DIMMER 120V COMMERCIAL GRADE
- ⊞ PROVIDED BY MC.

KEY NOTES

- ① JUNCTION BOX FOR RANGE TOP.
- ② DUPLEX RECEPTACLE FOR REFRIGERATOR, MOUNTED 30" ABOVE FLOOR.
- ③ JUNCTION BOX FOR DISHWASHER, MOUNTED BELOW COUNTER.
- ④ DUPLEX RECEPTACLE FOR MICROWAVE, MOUNTED IN CABINET ABOVE MICROWAVE.
- ⑤ SWITCH AND JUNCTION BOX FOR GARBAGE DISPOSAL. SWITCH TO BE MOUNTED ABOVE COUNTER AND JUNCTION BOX TO BE MOUNTED IN CABINET BELOW SINK.

DAMMON ENGINEERING, INC.
 LOUISIANA & MISSISSIPPI
 Chief Engineer: Brian Mistrich, PE
 554 Old Spanish Trail
 Slidell, LA 70588
 www.dammonengineering.com
 info@dammonengineering.com
 PH: 985.649.5832 F: 985.641.5950

# DESCRIPTION	DATE

SEAL: _____

PRELIMINARY NOT FOR CONSTRUCTION

MAIN STAY SUITES
 100 MAIN STREET
 LOT #17 LA HWY 271
 HOOGERSVILLE, LA 70045
 JOB No: 2265
 DATE: FEBRUARY, 2016
 DRAWN BY: JTL
 CHECKED BY: CKD

SHEET TITLE:
POWER & LIGHTING SUITES

DRAWING NUMBER:
E104

SHEET No: 10 of 10