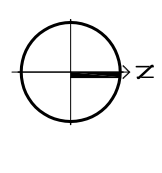
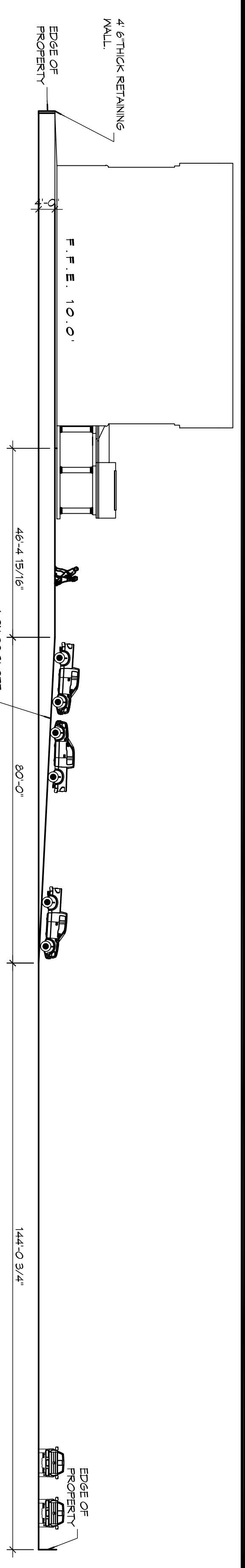


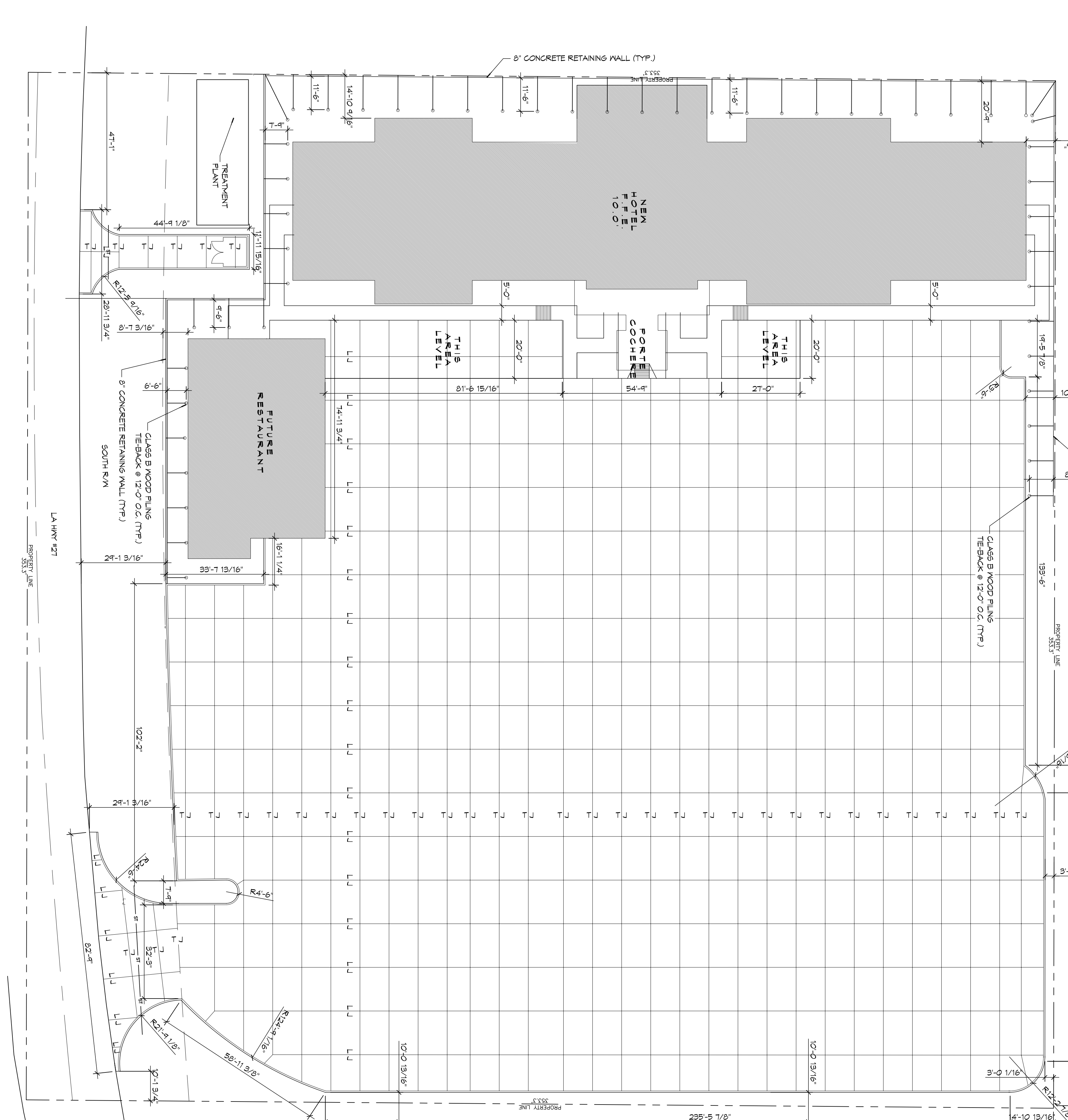
1 SITE SECTION

SCALE: 1" = 20'



1 SITE PAVING PLAN

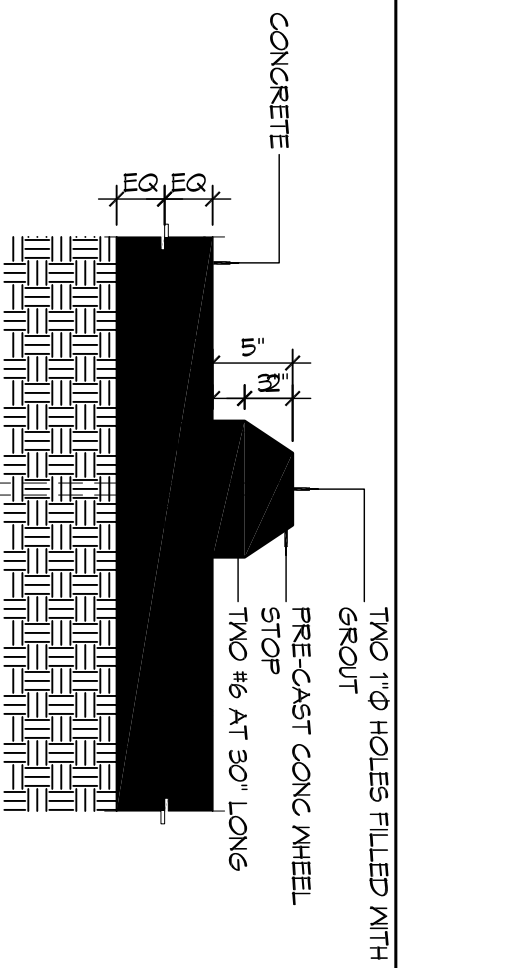
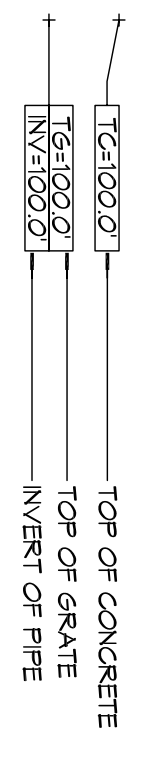
SCALE: 1" = 20'



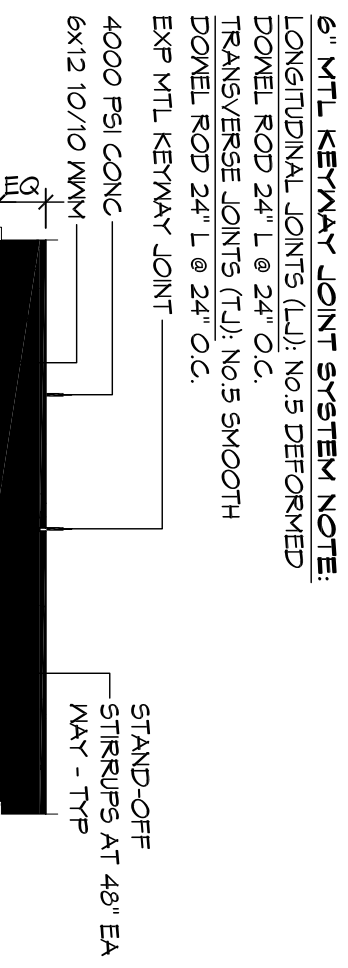
GENERAL PAVING NOTES

1. ALL NEW CONCRETE SHALL HAVE A MINIMUM COMPRESSIVE STRENGTH OF 4,000 PSI AT 28 DAYS AND A MINIMUM THICKNESS OF 6" CONCRETE MIX SHALL BE IN ACCORDANCE WITH THE LATEST REVISION OF ASTM C-150 TYPE 1.
2. CONCRETE PAVING THICKNESS SHALL VARY AS FOLLOWS:
 - a. APRONS & LOADING AREAS = 8" THICKNESS
 - b. DRIVE LANES & PARKING AREAS = 6" THICKNESS (STANDARD JND)
3. ALL REINFORCING STEEL SHALL MEET ASTM-A615 (GRADE 60).
4. ALL VERTICAL AND HORIZONTAL MOVEMENT JOINTS SHALL BE LOCATED AND INSTALLED AS SHOWN ON THE PAVING PLAN AND IN ACCORDANCE WITH THE MANUFACTURER'S RECOMMENDATIONS.
5. ALL SUB GRADE FILL SHALL BE SELECT GRANULAR MATERIAL COMPACTED TO 95% STANDARD PROCTOR DENSITY IN A MAXIMUM OF 6" LIFTS.
6. CONTRACTOR SHALL CONTACT THEIR REGULATORY DEPARTMENT OF ENGINEERING PRIOR TO CONDUCTING ANY WORK.
7. ANY WORK WITHIN THE ROADWAY OR ADJACENT TO THE ROADWAY (INCLUDING ANY INTERFERENCE TO SIGNALS, TRAFFIC LIGHTS, CONCRETE CONTROL DEVICES OF THE STATE OF LOUISIANA, THE CONTRACTOR MUST FINISH ALL NECESSARY TRAFFIC SIGNS AND/OR BARRICADES AND MAINTAIN THEM DURING CONSTRUCTION ACTIVITY.

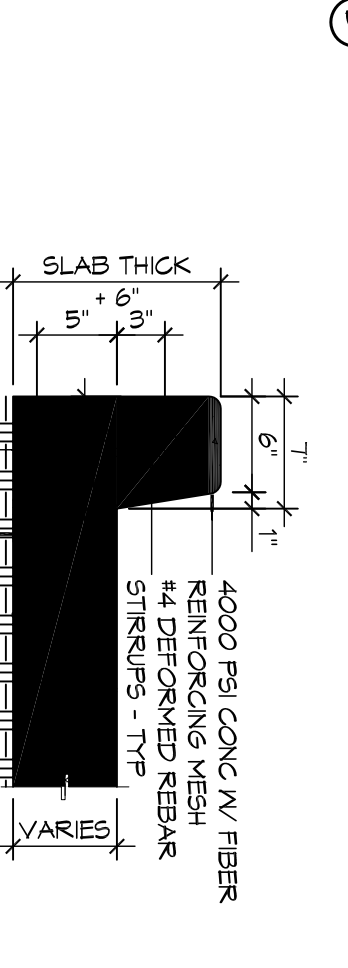
SITE LEGEND



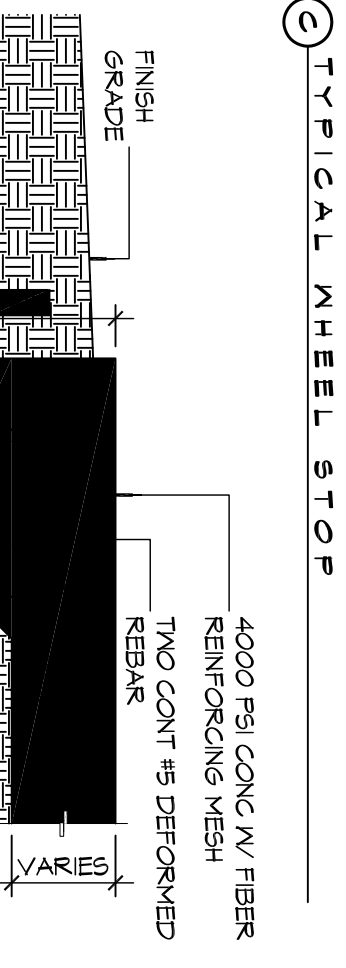
11 TYPICAL CURB DETAIL



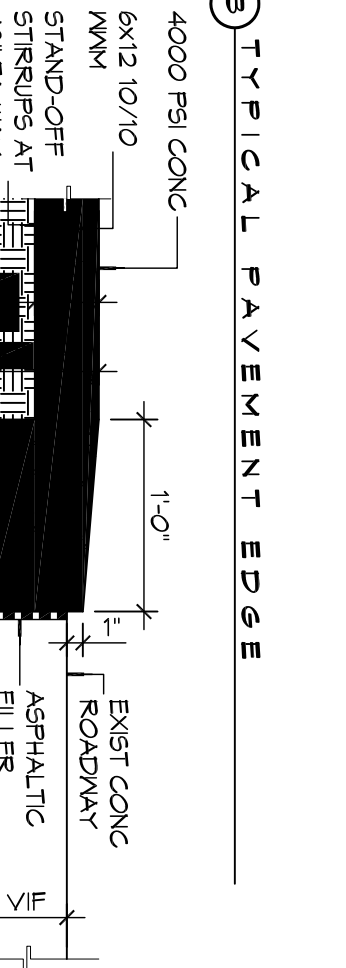
12 TYPICAL WHEEL STOP



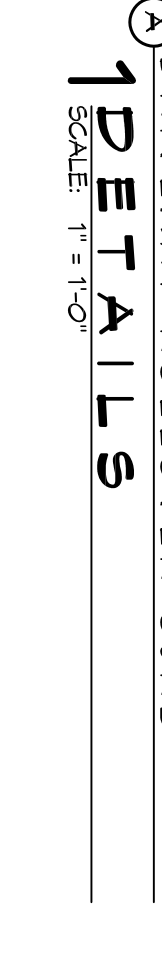
13 TYPICAL PAVEMENT JOINT



14 TYPICAL PAVING EDGE



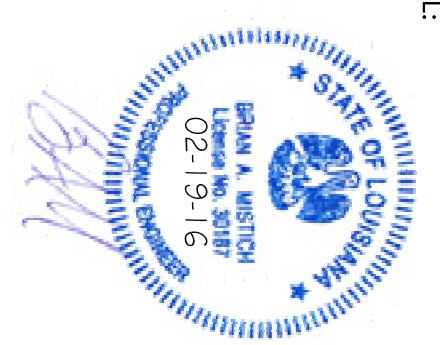
15 TYPICAL RETAINING WALL SECTION



16 TYPICAL DRIVEWAY ROLLER CURB

DAMMON ENGINEERING, INC.
LOUISIANA & MISSISSIPPI

Chief Engineer: Brian Mistick, PE
554 Old Spanish Trail
Stidell, LA 70458
www.dammonengineering.com
info@dammonengineering.com
PH: 985.649.5832 F: 985.641.5950



MAINSTAY SUITES
100 MAIN STREET
LOT #1 LA HWY 27
HACKBERRY, LA 70645

JOB NO: 2265 DATE: FEBRUARY, 2016
DRAWN BY: JTL CHECKED BY: BAM

C103
SHEET TITLE: MAINSTAY SUITES SITE PAVING PLAN
DRAWING NUMBER: C103
SHEET NO: 1 OF 52