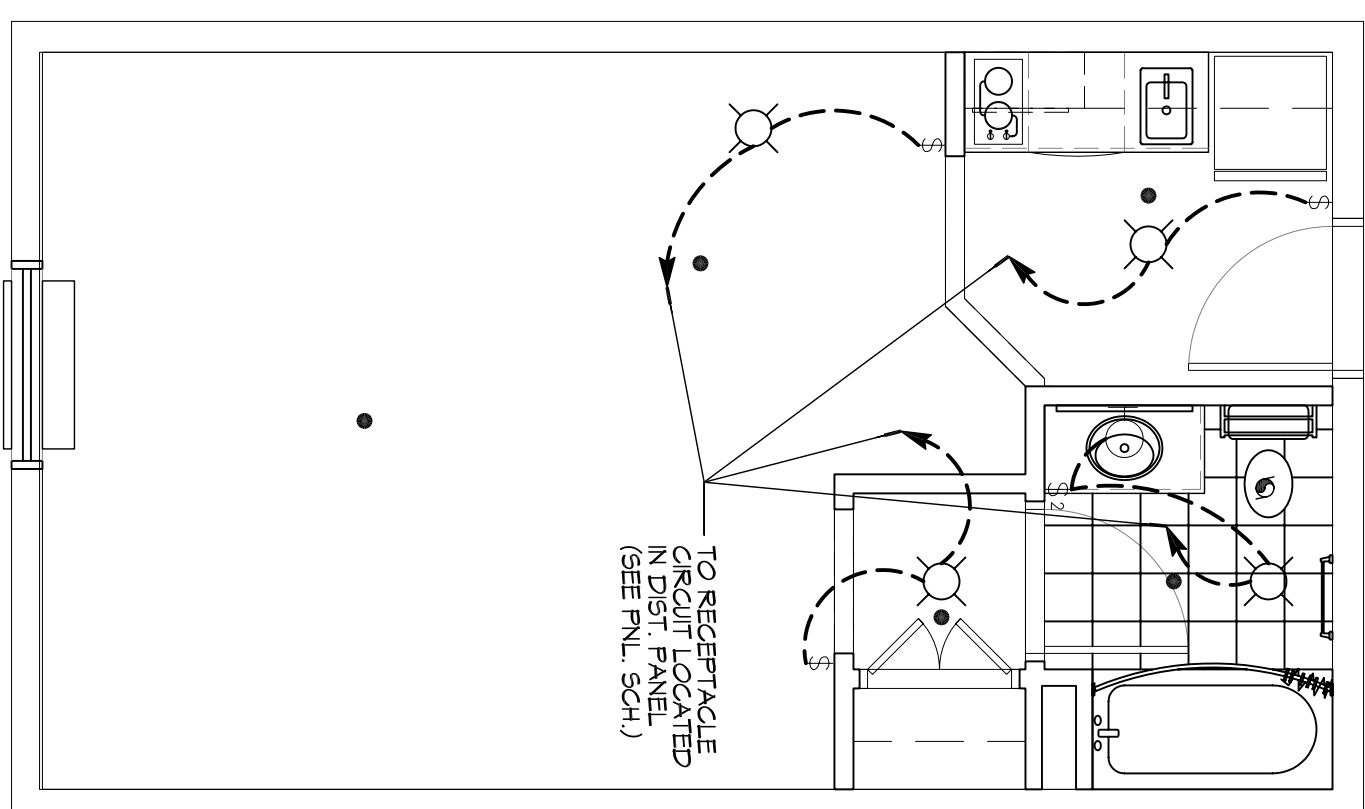
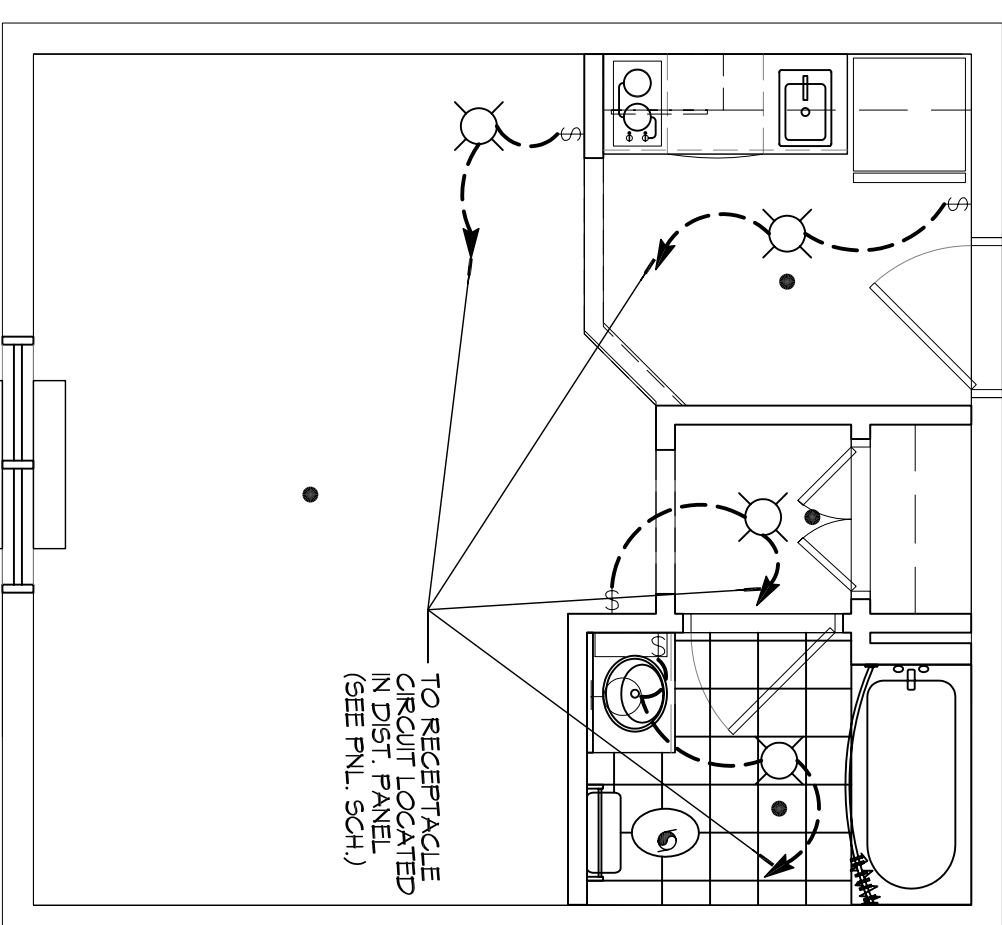


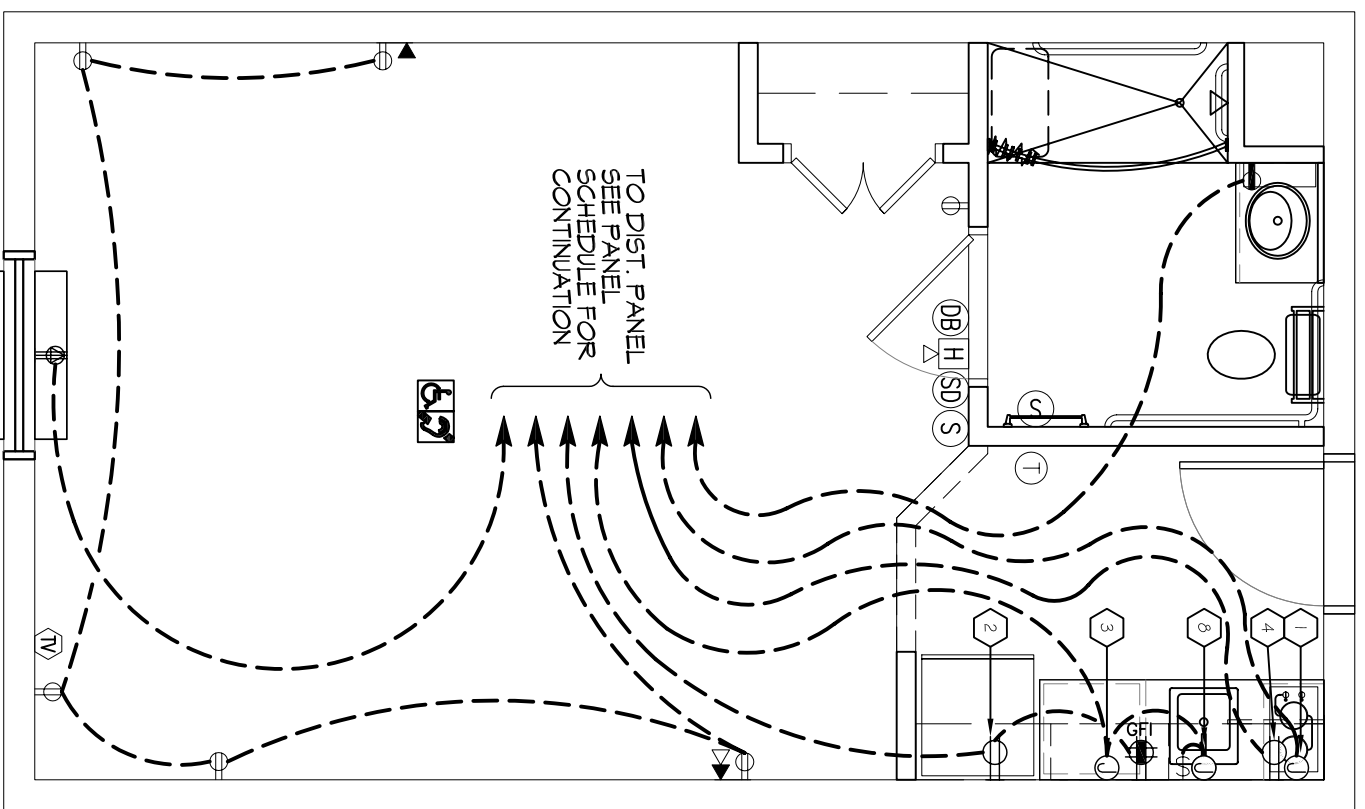
1 ACCESSIBLE DOUBLE QUEEN SUITE (LIGHTING)
SCALE: 1/4"=1'-0"



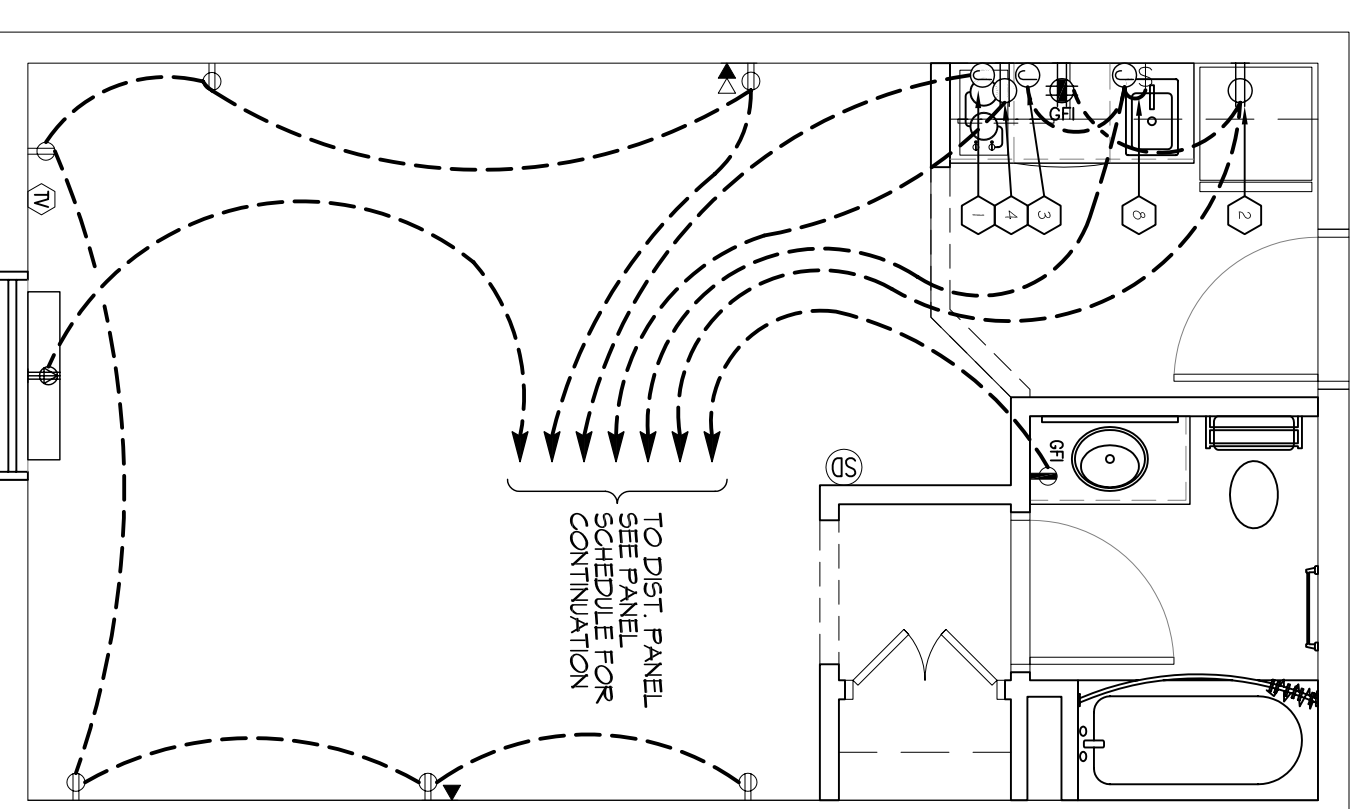
3 DOUBLE QUEEN SUITE (LIGHTING)
SCALE: 1/4"=1'-0"



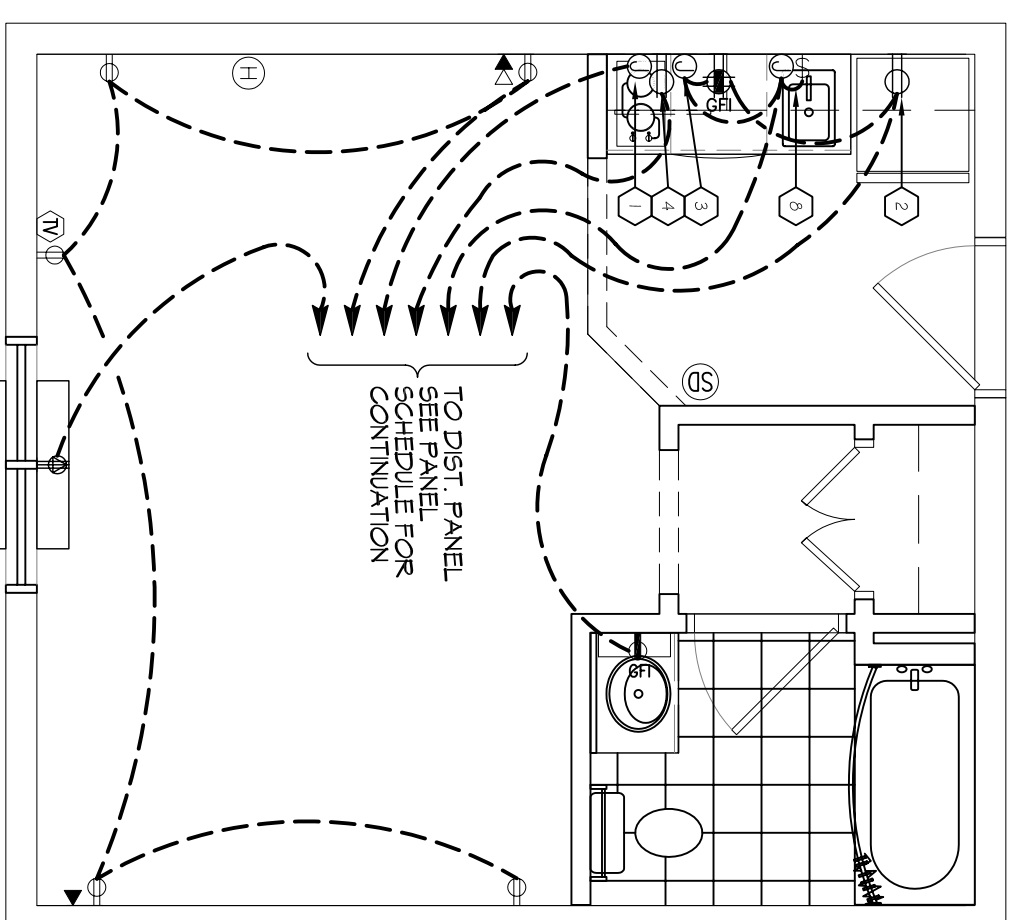
5 KING SUITE (LIGHTING)
SCALE: 1/4"=1'-0"



2 ACCESSIBLE DOUBLE QUEEN SUITE (POWER)
SCALE: 1/4"=1'-0"



4 DOUBLE QUEEN SUITE (POWER)
SCALE: 1/4"=1'-0"



6 KING SUITE (POWER)
SCALE: 1/4"=1'-0"

ELECTRICAL LEGEND - POWER

- SYMB
- STANDARD 120V DUPLEX RECEPTACLE - NEMA 5-2 OR 15' AFF (UNLESS OTHERWISE NOTED)
- SINGLE-POLE DEDICATED RECEPTACLE - REFER TO PANEL SCHEDULE FOR CIRCUIT SIZE
- GFIC DUPLEX RECEPTACLE
- GFIC QIAD RECEPTACLE
- 208V DEDICATED RECEPTACLE
- 220V DEDICATED GFIC RECEPTACLE
- WEATHER-PROOF GFIC DUPLEX RECEPTACLE MOUNTED AT 30" AFF (UNLESS OTHERWISE NOTED)
- STANDARD 120V DUPLEX RECEPTACLE - FLOOR MOUNTED
- STANDARD QIAD RECEPTACLE - WALL MOUNTED
- STANDARD QIAD RECEPTACLE - FLOOR MOUNTED
- 125V 15 AMP DUPLEX USB BYOC 3 AMP HUBBELL USB CHARGER RECEPTACLE
- 125V 15 AMP QIADP EXHIBS BYOC 3 AMP HUBBELL USB CHARGER RECEPTACLE
- JUNCTION BOX
- GENERATOR BATTERY CHARGER GFI OUTLET
- 2-BUTTON PUSH BUTTON STATION
- COAX-CABLE CONNECTION FOR TELEVISION
- FLOOR DATA OUTLET
- POWER DISCONNECT
- GAS WATER HEATER ON DECK OR MEZZANINE ABOVE - SEE AS NOTED ON PLAN
- AIR CONDITIONING AIR HANDLING UNIT ON DECK
- AIR MECHANICAL ABOVE, SEE MECHANICAL DRAWINGS
- AIR CONDITIONING CONDENSER UNIT ON CONCRETE PAD, SEE MECHANICAL DRAWINGS

- NOTES:**
- CONNECT ALL EMERGENCY/EXIT LIGHT FIXTURES TO NEAREST CONSTANT POWER SOURCE.
 - THE # NEXT TO A RECEPTACLE OR DATA OUTLET DESIGNATES THAT OTHER (ONE HIGH / ONE LOW OR WALL / ONE OVER THE OTHER).
 - REFER TO INTERIOR ELEVATIONS FOR MOUNTING HEIGHT AND ORIENTATION OF OUTLETS MOUNTED ABOVE COUNTERTOPS.
 - ALL OUTLETS IN SUITES SHALL BE ARC FAULT.

ELECTRICAL LEGEND - LIGHTING

- EMERGENCY LIGHT FIXTURE
- EXIT LIGHT FIXTURE - WALL MOUNTED
- EXIT LIGHT FIXTURE - CEILING MOUNTED
- CEILING FAN
- CLING MTD FLOOR STRIP FIXTURE
- RECESSED CEILING LIGHT FIXTURE
- CLING HINGE FLOOR STRIP FIXTURE
- SURFACE MOUNTED LIGHT FIXTURE
- MALL MOUNTED LIGHT FIXTURE
- CLING MTD FLOOR FIXTURE
- OUTDOOR LIGHT ON PHOTO TIMER - MTD IN GROUND
- PENDANT LIGHT FIXTURE
- EXHAUST FAN - SEE MECH
- ELECTRIC PANEL BOARD
- CIRCUIT HOME RUN
- MALL MTD SPEAKER - PROVIDE RATED HOUSING FOR RATED WALLS WHERE INDICATED
- CLING MTD SPEAKER - PROVIDE RATED HOUSING FOR RATED CEILING WHERE INDICATED
- CLING MTD FLOOR STRIP
- CLING HINGE FLOOR STRIP
- SURFACE MOUNTED LIGHT
- MALL MOUNTED LIGHT
- CLING MTD FLOOR FIXTURE
- EXTEND TO FIXTURE(S) NOT SHOWN - SEE NOTE
- LIGHT SWITCH - 3-WAY 120V COMMERCIAL GRADE
- LIGHT SWITCH - DIMMER 120V COMMERCIAL GRADE
- PROVIDED BY M.C.

KEY NOTES

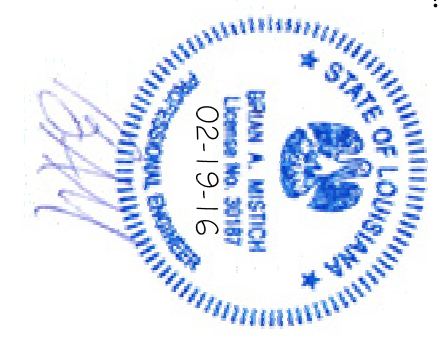
- JUNCTION BOX FOR RANGE TOP
- DUPLEX RECEPTACLE FOR REFRIGERATOR, MOUNTED 30" ABOVE FLOOR
- JUNCTION BOX FOR DISHWASHER, MOUNTED BELOW COUNTER
- DUPLEX RECEPTACLE FOR MICROWAVE, MOUNTED IN CABINET ABOVE COUNTER
- SWITCH AND JUNCTION BOX FOR GARBAGE DISPOSAL SWITCH TO BE MOUNTED IN CABINET BELOW SINK

DAMMON ENGINEERING, INC.
LOUISIANA & MISSISSIPPI

Chief Engineer: Brian Mistich, PE
554 Old Spanish Trail
Slidell, LA 70458

www.dammonengineering.com
info@dammonengineering.com
PH: 985.649.5832 F: 985.641.5950

REVISIONS	DATE



MAIN STAY SUITES

100 MAIN STREET
LOT #1 LA HWY 27
HACKBERRY, LA 70645

JOB No: 2265 DATE: FEBRUARY, 2016
DRAWN BY: JTL CHECKED BY: BAM

The above drawings and specifications, design and all approvals represented herein are the property of Dammon Engineering, Inc. and shall remain the property of Dammon Engineering, Inc. and shall not be used in connection with any work or project other than the specific project for which they have been prepared and developed without written consent of Dammon Engineering. Please contact with these drawings or specifications that contain the name of the engineer or architect who prepared them.

SHEET TITLE: POWER & LIGHTING SUITES

DRAWING NUMBER: **E103**

SHEET NO: 47 OF 52