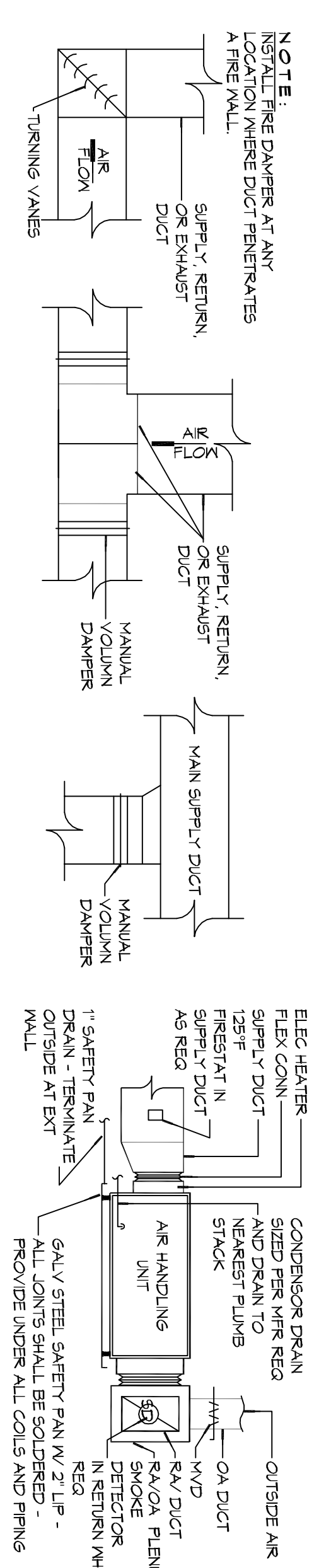
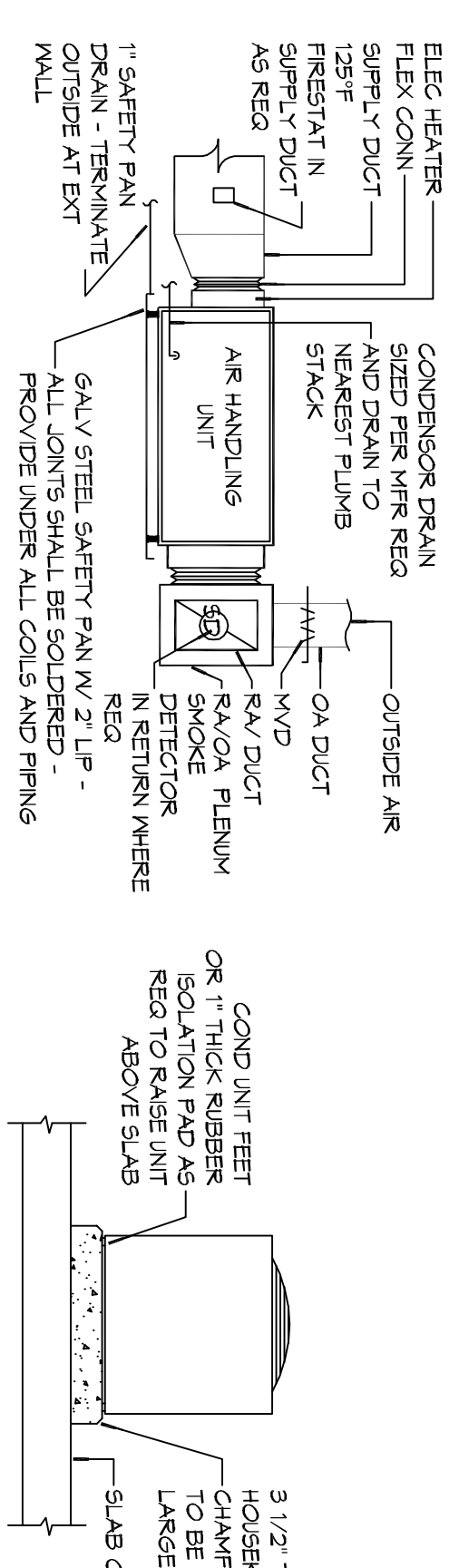


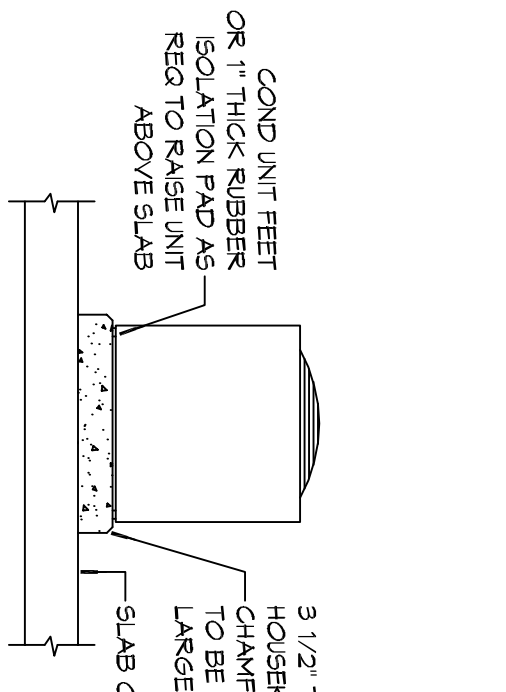
2 TYPICAL CEILING DIFFUSER & DUCTWORK  
SCALE: N.T.S.



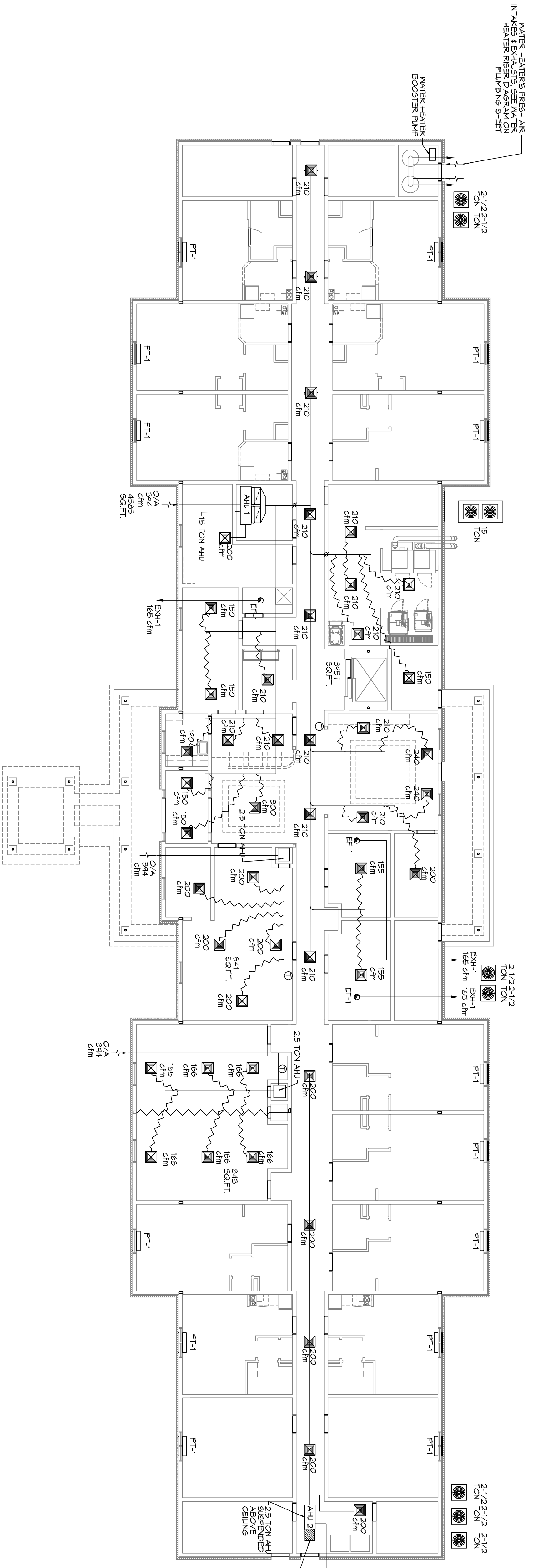
3 TYPICAL HARD DUCT DETAILS  
SCALE: N.T.S.



4 TYPICAL AHU DETAIL  
SCALE: N.T.S.



5 TYPICAL A/C CONDENSER DETAIL  
SCALE: N.T.S.



A/C UNIT SCHEDULE

TOTAL BU	ELECTRICAL		MFR
	VOLT	MAX O.C.P.	
180,000 BU 15 TON AC	208V, 3Ø	66.3	80
36,000 BU 2 1/2 TON AC	208V, 3Ø	10.0	15

AHU UNIT SCHEDULE

TOTAL BU	ELECTRICAL		MFR
	CFM	MAX O.C.P.	
180,000 BU 15 TON	6000	94.4	22.5
36,000 BU 2 1/2 TON	1000	4.9	1.0

PTAC SCHEDULE

UNIT	ELECTRICAL		MFR
	CFM	MAX O.C.P.	
PT-1	4000	36.0	9.5
6/STROOMS	360	3.6	0.9

EXHAUST FAN SCHEDULE

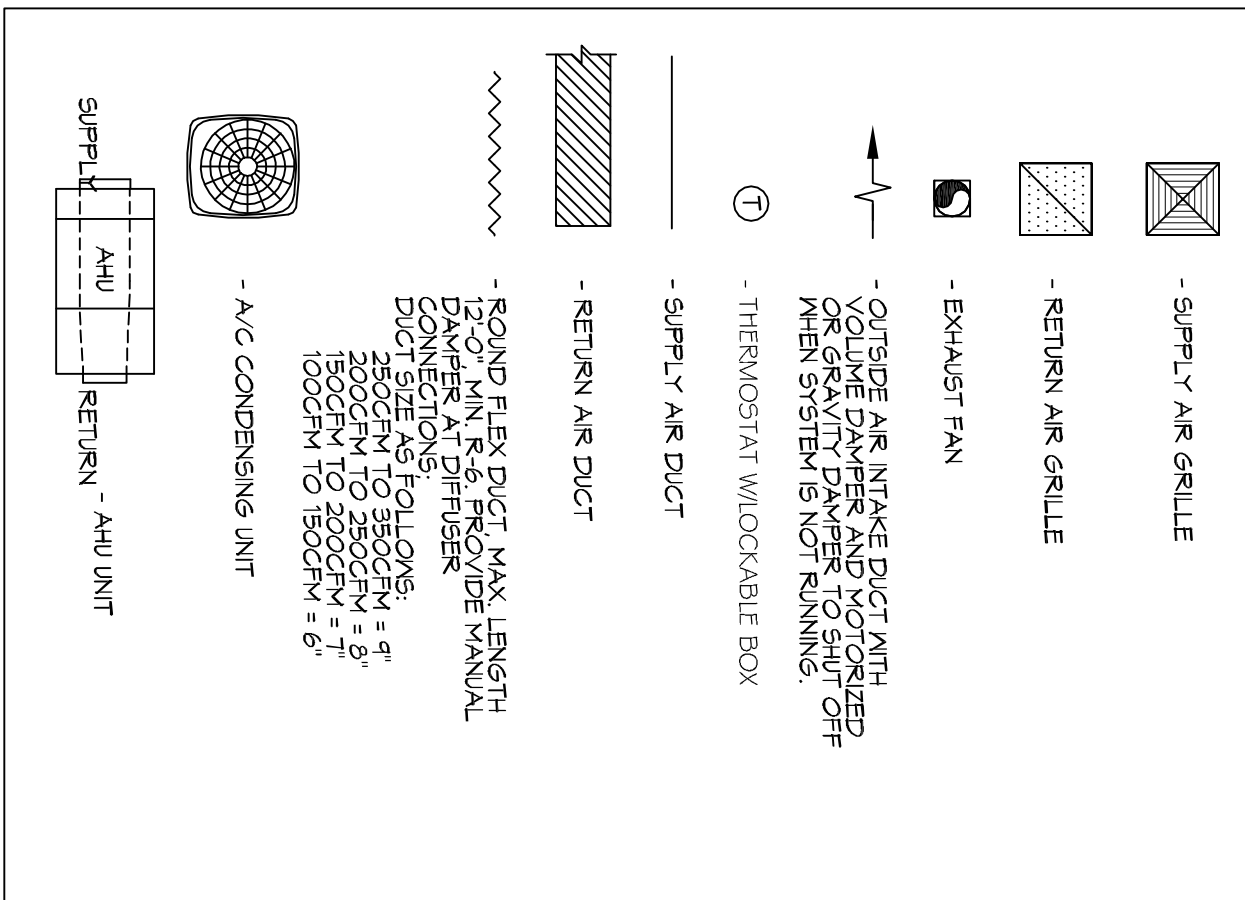
FAN NO.	ELECTRICAL		MFR
	CFM	VOLTAGE	
EXH-1	165	120	1.0

NOTE:  
1. ALL FANS INSTALLED IN RATED ASSEMBLIES SHALL BE EQUIPPED W/ APPROPRIATE FIRE DAMPER TO MATCH ASSEMBLY FIRE RATING.  
2. PAINT ALL SHUTTERS AND EXTERIOR GRILLES TO COLOR SPECIFICATION BY ARCHITECT.  
3. PROVIDE BIRD SCREENING ON ALL SHUTTERS AND EXTERIOR GRILLES.  
4. PROVIDE BACK FLOW PREVENTERS ON ALL EXHAUST SYSTEMS.

GENERAL HVAC NOTES

- OWNER HAS THE OPTION FOR AHU/DIGITAL SYSTEM FOR PTAC UNITS. OPTION IS AVAILABLE TO HAVE REMOTE THERMOSTATS FOR PTAC UNITS.
- CONCEALED DUCTWORK TO BE GALVANIZED SHEET METAL LINED WITH FIBROUS GLASS DUCT LINER, MIN R-6, INSTALLED PER SVAKMA STANDARDS.
- EXPOSED DUCTWORK TO BE GALVANIZED SHEET METAL LINED WITH FIBROUS GLASS DUCT LINER, MIN R-6, INSTALLED PER SVAKMA STANDARDS.
- ROUND FLEXIBLE DUCT TO BE UL-181, CLASS 1, AIR DUCT MATERIALS.
- DUCT SIZES SHOWN ARE CLEAR INSIDE DIMENSIONS.
- IN ALL SYSTEMS OVER 2000 CFM AND LESS THAN 15,000 CFM, SMOKE DETECTORS SHALL BE INSTALLED IN ACCORDANCE WITH NFPA 72 IN THE RETURN DUCT DOWNSTREAM OF THE AIR HANDLING UNIT AND ALL FILTERS TO BE DOWNSTREAM OF THE RETURN AIR OF EACH SYSTEM.
- PROVIDE UL LISTED 2" (MIN) THICK RATED FIRE RESISTANT ALL DUCT PENETRATIONS OF FIBER GLASS INSULATION AND INSULATION REQUIRED BY CODE INCLUDING OUTSIDE AIR INTAKES AND EXHAUST FANS.
- CONDENSATE DRAINS TO BE PVC PIPE RUN TO PLUMBERS P-TRAP WITH FIVE FEET OF AIR HANDLING UNITS.
- ALL AIR HANDLING SYSTEMS TO BE BALANCED TO ASSURE PROPER AIR FLOW PER PLANS.
- ALL THERMOSTATS TO BE AUTOMATIC CHANGE-OVER WITH HEAT SWITCH.
- EXHAUST FAN SHALL BE CONTROLLED BY A SWITCH ON THE WALL IN THE SAME LOCATION AS LIGHT SWITCHES. PROVIDE BACK DRAFT DAMPER.
- LOCATION FOR PLUMBING EXHAUST VENT IN PROPER ROOF DAMPERS AT THE REGISTER.
- ALL SUPPLY AIR VENTS SHALL BE EQUIPPED WITH AIR CONTROL.
- LOCATE OUTDOOR UNITS AS SHOWN ON ARCHITECTURAL DRAWINGS.
- REGISTER LINES SHALL BE SIZED BY UNIT MANUFACTURER AND INSTALLED TO MATCH TO REGISTER AND CONTROL DAMPERS.
- REGISTER AIR SHALL BE SUPPLIED TO EACH REGISTER THROUGH EXTERIOR WALL DUCT SUPPLIED WITH A CONTROL DAMPER.
- ALL ELECTRICAL, MECHANICAL, AND PLUMBING PENETRATING FIRE WALLS SHALL BE FIRE CALLED PENETRATIONS THROUGH EXISTED CONSTRUCTION SHALL BE SEALED WITH A MATERIAL CAPABLE OF PREVENTING THE PASSAGE OF FLAMES AND HOT GASES WHEN TESTED IN ACCORDANCE WITH ASTM E814.
- ALL MECHANICAL SYMBOLS ARE DRAWN DIAGRAMMATICALLY. CONTRACTOR TO VERIFY WITH OWNER LOCATIONS OF VENTS, DAMPERS, REGISTERS, ETC.
- FLEXIBLE DUCTWORK LENGTH NOT TO EXCEED 12'-0".
- REFER TO REFLECTED CEILING PLAN FOR FINAL GRILLE AND DIFFUSER LOCATIONS AND COORDINATE AS REQUIRED.
- FINAL LOCATION OF TEMPERATURE CONTROLS TO BE COORDINATED WITH OWNER AT JOB SITE.
- PROVIDE AND INSTALL SMOKE DETECTORS AS APPROVED BY LOCAL AHS. PLACE NEAR R/A AND S/A OPENINGS OF AHU AND PROVIDE WITH ACCESS PANEL, WIRING BY ELECTRICAL CONTRACTOR.
- FRESH AIR INTAKES ARE REQUIRED TO HAVE MOTORIZED OR GRAVITY DAMPERS TO SHUT OFF WHEN SYSTEM IS NOT RUNNING.
- PROVIDE BIRD SCREENING AT ALL EXTERIOR MECHANICAL PENETRATIONS.
- COORDINATE WALL MOUNTED THERMOSTAT LOCATIONS WITH ALL OWNER FINISHED ITEMS EITHER WALL MOUNTED OR FLOOR MOUNTED AGAINST PARTITIONS. REFER TO ARCHITECTURAL DRAWINGS.
- SEE ROOF PLAN FOR ALL ROOF PENETRATIONS.
- PROVIDE MIN 18 GA GALVANIZED SHEET METAL TO BLANK-OFF GABLE VENTS WHERE INTAKE/EXHAUST DUCTS OCCUR.

LEGEND



**DAMMON ENGINEERING, INC.**  
LOUISIANA & MISSISSIPPI  
Chief Engineer: Brian Mstsch, PE  
554 Old Spanish Trail  
Slidell, LA 70458  
www.dammonengineering.com  
info@dammonengineering.com  
PH: 985.649.5832 F: 985.641.9590

REVISIONS	DESCRIPTION	DATE

**MAINSTAY SUITES**  
100 MAIN STREET  
SUITE 201  
HACKBERRY, LA 70645  
JOB No: 2265 DATE: APRIL, 2016  
DRAWN BY: CKD CHECKED BY: BAN  
SHEET TITLE: MECHANICAL PLAN - LEVEL 1  
DRAWING NUMBER: M101  
SHEET No: 43 of 52