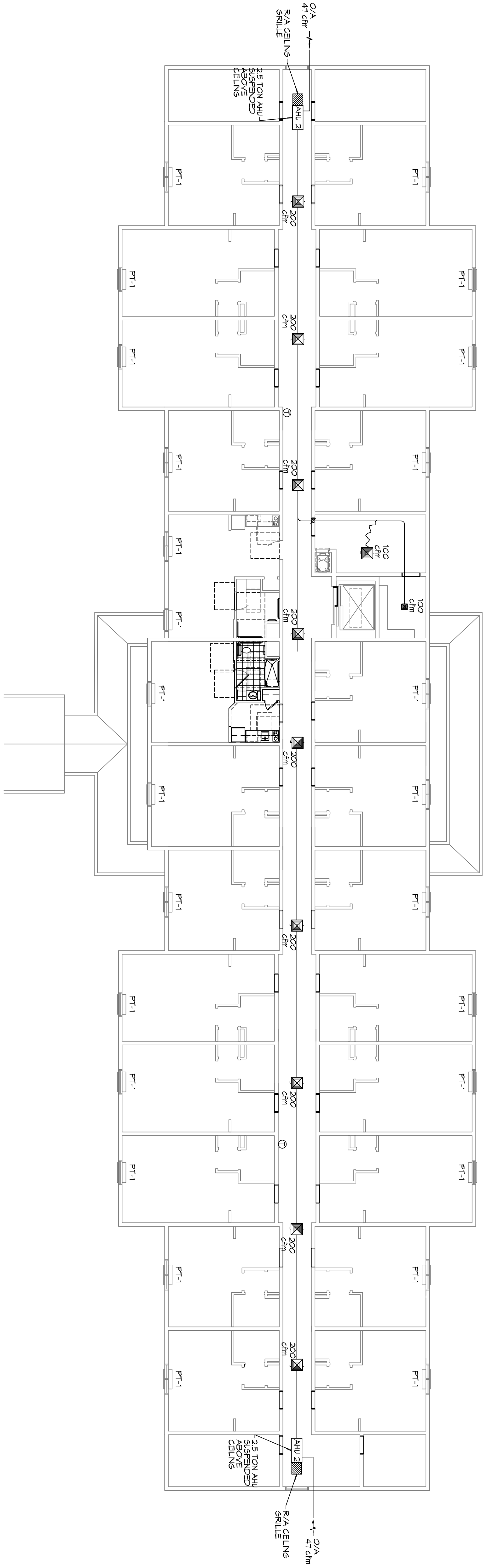


MECHANICAL PLAN - LEVELS 2 & 3
SCALE: 3/32"=1'-0"



PTAC SCHEDULE										
UNIT	TOTAL BTU	CFM	OA (Kw)	ELECTRICAL			WFR			
				VOLT	MCA	MAX O.C.P.				
PT-1 GUESTROOMS	9,000	360	36	315	208V, 3Ø	14.5	20	AMANA		
HALLWAY	36,000	1000	47	10	208V, 3Ø	10	15	TRANE OR EQUAL		

MAINSTAY SUITES
100 MAIN STREET
LOT #1 LA HWY 27
HACKBERRY, LA 70645

JOB No: 2265 DATE: APRIL, 2016
DRAWN BY: CKD CHECKED BY: BAM

This drawing, its specifications, design and arrangements registered hereby and shall remain the property of Dammon Engineering, and no part thereof shall be copied, reproduced, or used in connection with any work of project other than the specific project for which the same have been prepared and provided. Without the consent of Dammon Engineering, Inc. "Visual Control" with their drawings or specifications shall constitute a violation of the laws of Louisiana and Mississippi.

REVISIONS		
#	DESCRIPTION	DATE

DAMMON ENGINEERING, INC.
LOUISIANA & MISSISSIPPI

Chief Engineer: Brian Mistch, PE
554 Old Spanish Trail
Stidell, LA 70458

www.dammonengineering.com
info@dammonengineering.com
PH: 985.649.5832 F: 985.641.5950