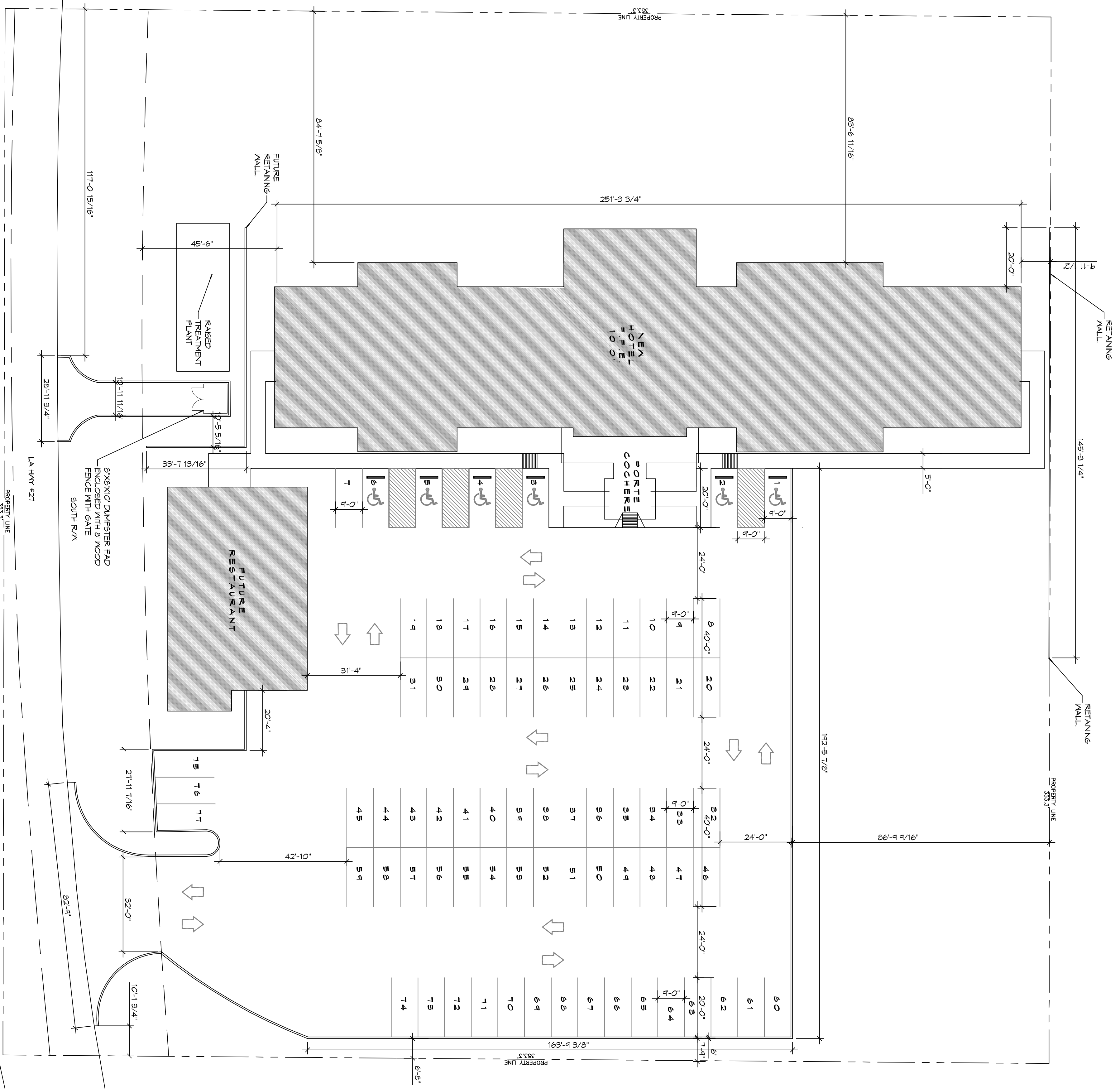


1 SITE PLAN
SCALE: 1" = 30'



PARKING STATISTICS

- PARKING REQUIREMENTS**
- GUEST ROOM COUNT
 - 62 ROOMS
 - PARKING COUNT REQUIREMENT
 - 1 PARKING SPACE PER GUEST ROOM
 - MINIMUM REQUIRED PARKING SPACE COUNT
 - 62 SPACES
 - PARKING SPACES PROVIDED
 - 77 SPACES (INCLUDING 6 ACCESSIBLE SPACES)

PARKING NOTE:

- 1) THE PARKING LOT SHALL BE ASPHALT WITH CONCRETE CURBS.
- 2) THE APRON AND HANDICAP SPACES SHALL BE CONCRETE.
- 3) THE DUPASTER PAD SHALL BE ALL CONCRETE WITH CONCRETE CURBS.



Chief Engineer: Brian Mistich, PE
554 Old Spanish Trail
Slidell, LA 70458
www.dammonengineering.com
info@dammonengineering.com
PH: 985.649.5832 F: 985.641.5950

REVISIONS		DATE
#	DESCRIPTION	



MAINSTAY SUITES

100 MAIN STREET
LOT #1 LA HWY 21
HACKBERRY, LA 70645

JOB No: 2265 DATE: APRIL, 2016

DRAWN BY: JTL CHECKED BY: BAM

This drawing and all related documents are the property of Dammon Engineering, Inc. and shall remain the property of Dammon Engineering, Inc. No part thereof shall be copied, reproduced, or transmitted in any form or by any means, electronic, mechanical, photocopying, recording, or by any information storage and retrieval system, without the prior written consent of Dammon Engineering, Inc. All other rights are reserved. For more information, please contact us at 985.649.5832.

SHEET TITLE:
SITE PLAN WITH BOAT PARKING

DRAWING NUMBER:
C101

SHEET No. 5 of 52