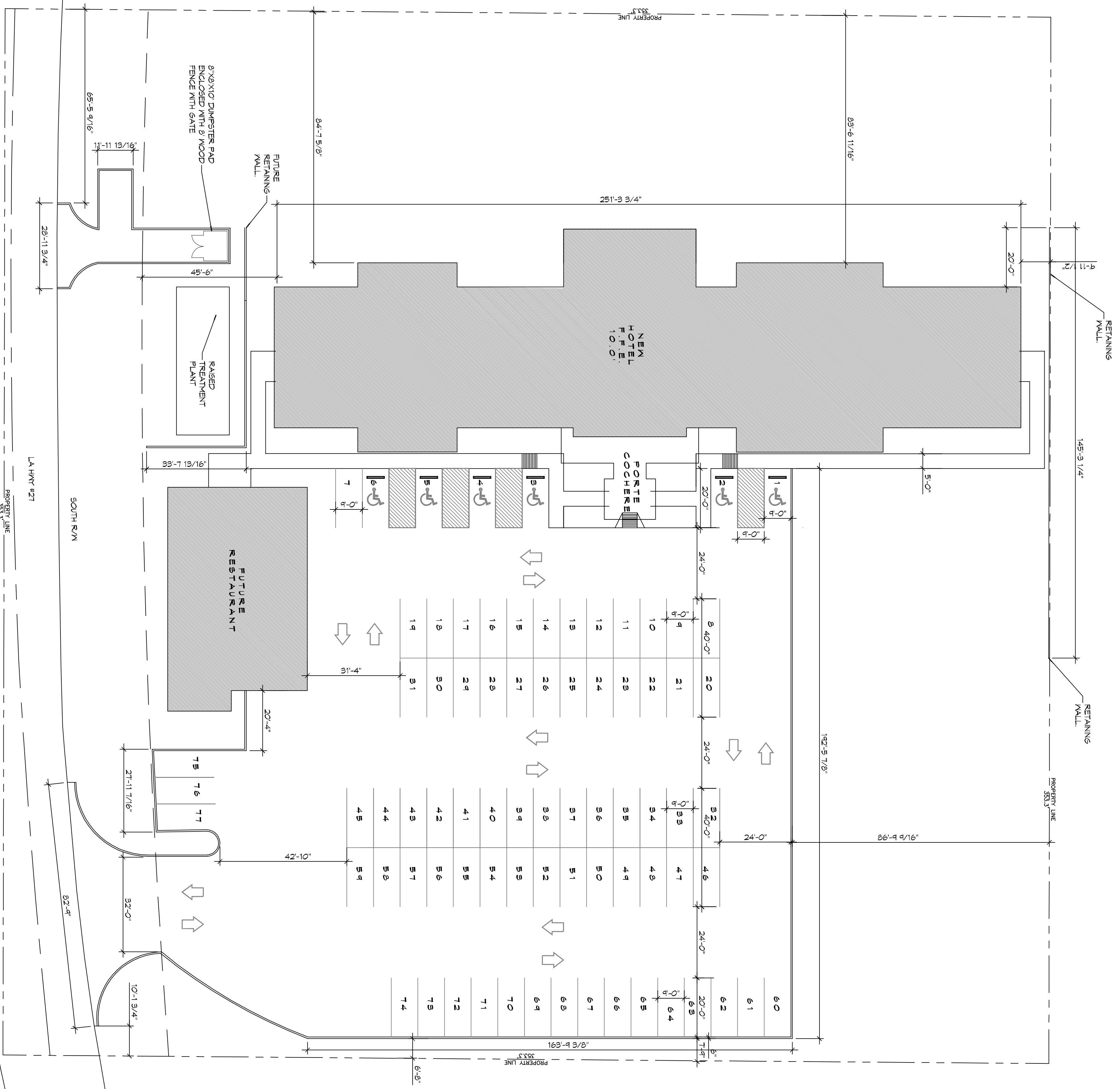


**1 SITE PLAN**  
SCALE: 1" = 30'



**PARKING STATISTICS**

- PARKING REQUIREMENTS**
- GUEST ROOM COUNT
  - 62 ROOMS
  - PARKING COUNT REQUIREMENT
  - 1 PARKING SPACE PER GUEST ROOM
  - MINIMUM REQUIRED PARKING SPACE COUNT
  - 62 SPACES
  - PARKING SPACES PROVIDED
  - 77 SPACES (INCLUDING 6 ACCESSIBLE SPACES)

**PARKING NOTE:**

- 1) THE PARKING LOT SHALL BE ASPHALT WITH CONCRETE CURBS.
- 2) THE APRON AND HANDICAP SPACES SHALL BE CONCRETE.
- 3) THE DUMPSTER PAD SHALL BE ALL CONCRETE WITH CONCRETE CURBS.



Chief Engineer: Brian Mistich, PE  
554 Old Spanish Trail  
Slidell, LA 70458  
www.dammonengineering.com  
info@dammonengineering.com  
PH: 985.649.5832 F: 985.641.5950

| REVISIONS |             | DATE |
|-----------|-------------|------|
| #         | DESCRIPTION |      |
|           |             |      |
|           |             |      |
|           |             |      |
|           |             |      |
|           |             |      |
|           |             |      |
|           |             |      |
|           |             |      |
|           |             |      |
|           |             |      |



**MAINSTAY SUITES**

100 MAIN STREET  
LOT #1 LA HWY 21  
HACKBERRY, LA 70645

JOB No: 2265 DATE: APRIL, 2016  
DRAWN BY: JTL CHECKED BY: BAM

This drawing is the property of Dammon Engineering, Inc. and shall remain the property of Dammon Engineering, Inc. and no part thereof shall be copied, reproduced, or transmitted in any form or by any means, electronic, mechanical, photocopying, recording, or by any information storage and retrieval system, without the prior written consent of Dammon Engineering, Inc. Please contact with their copyright notices that are contained on the drawings.

SHEET TITLE:  
SITE PLAN WITH BOAT PARKING

DRAWING NUMBER:  
**C101**

SHEET No. 5 of 52