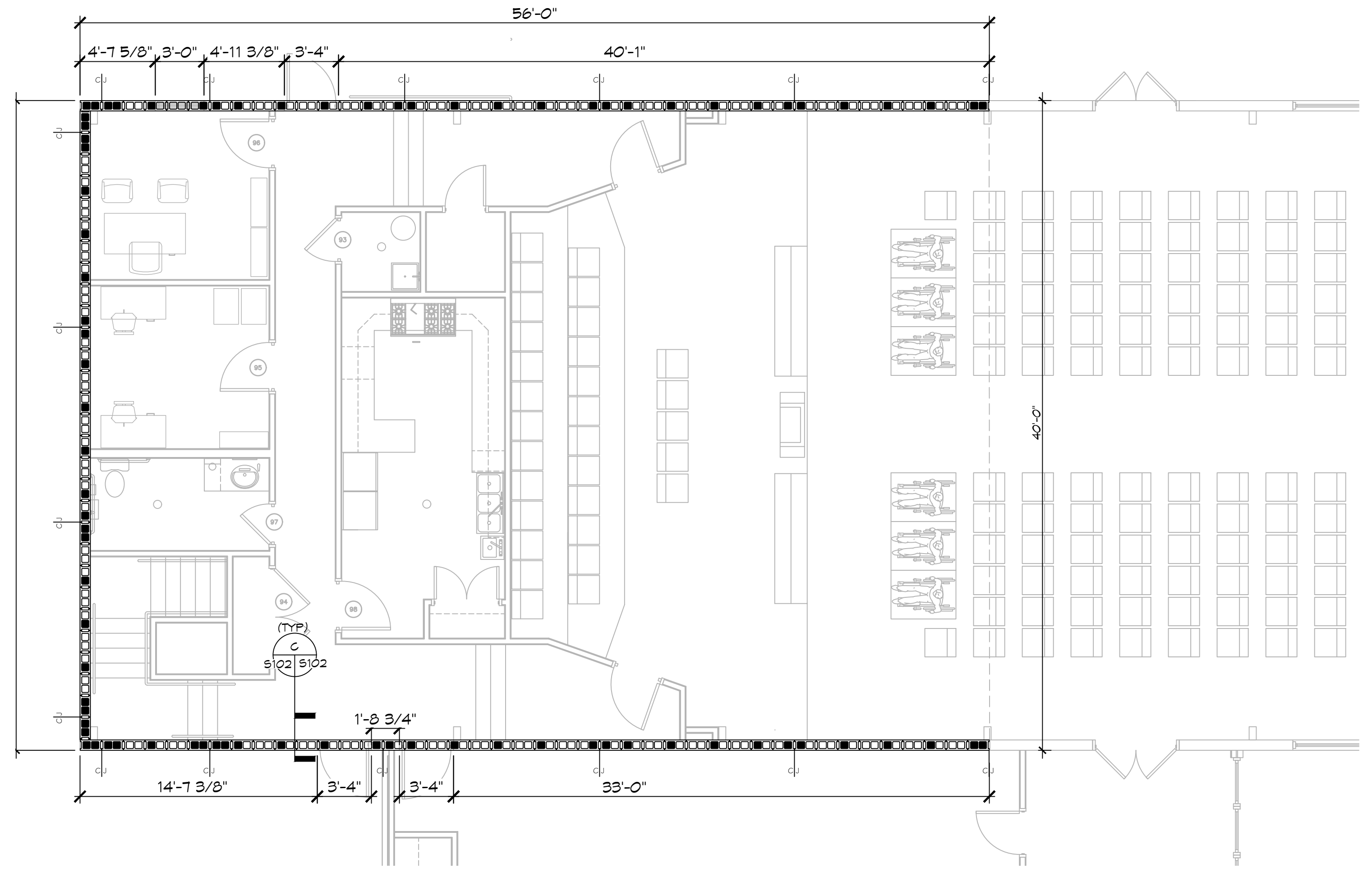
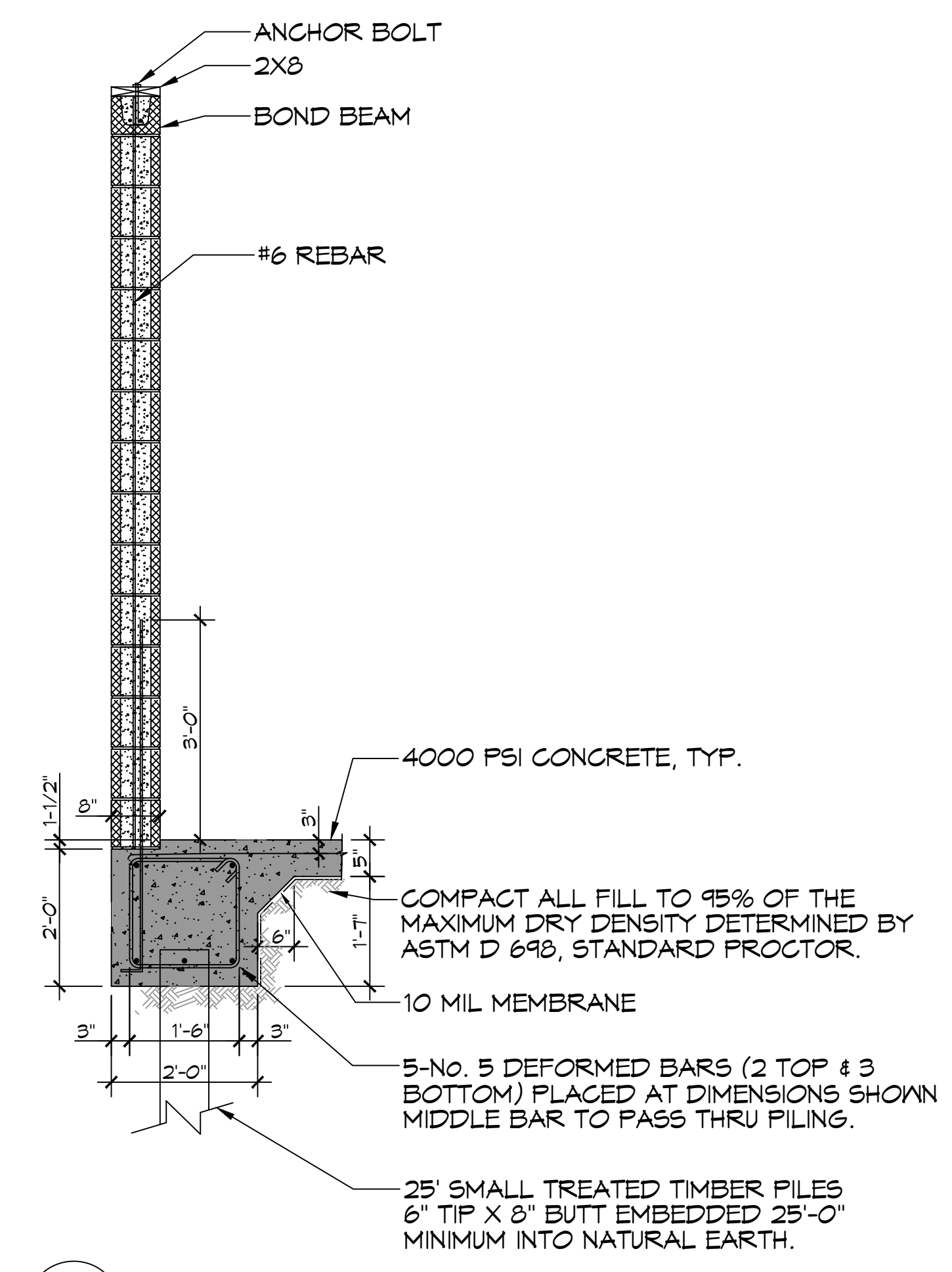


FILE NAME: S:\1 - CMU\5102.dwg DATE: 02-08-2025 10:54:15 AM USER: brian.watich

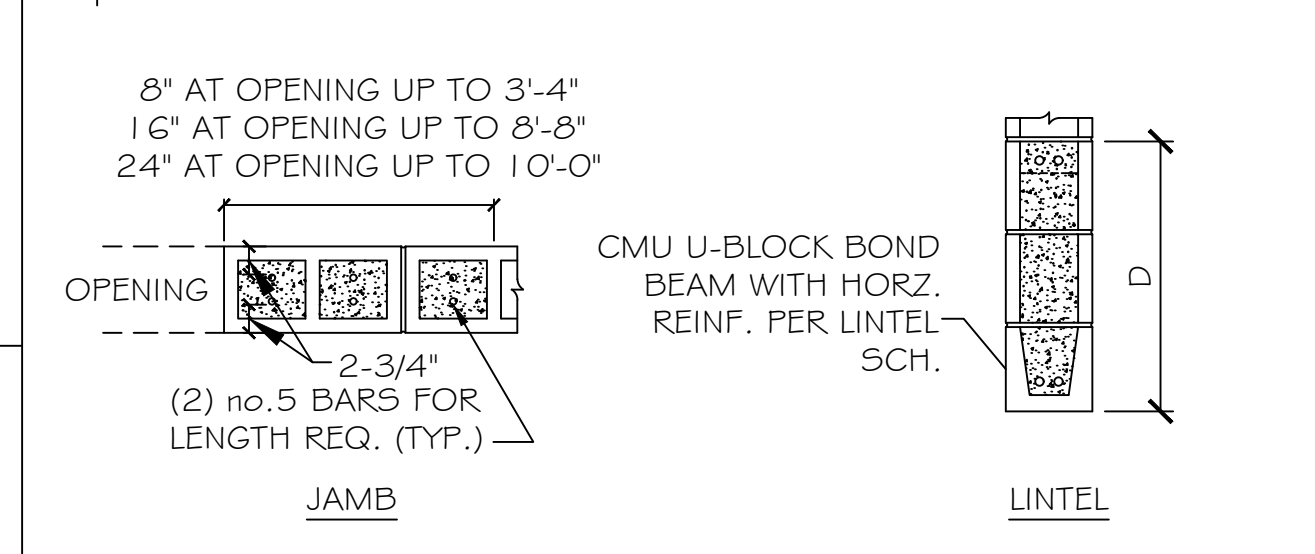
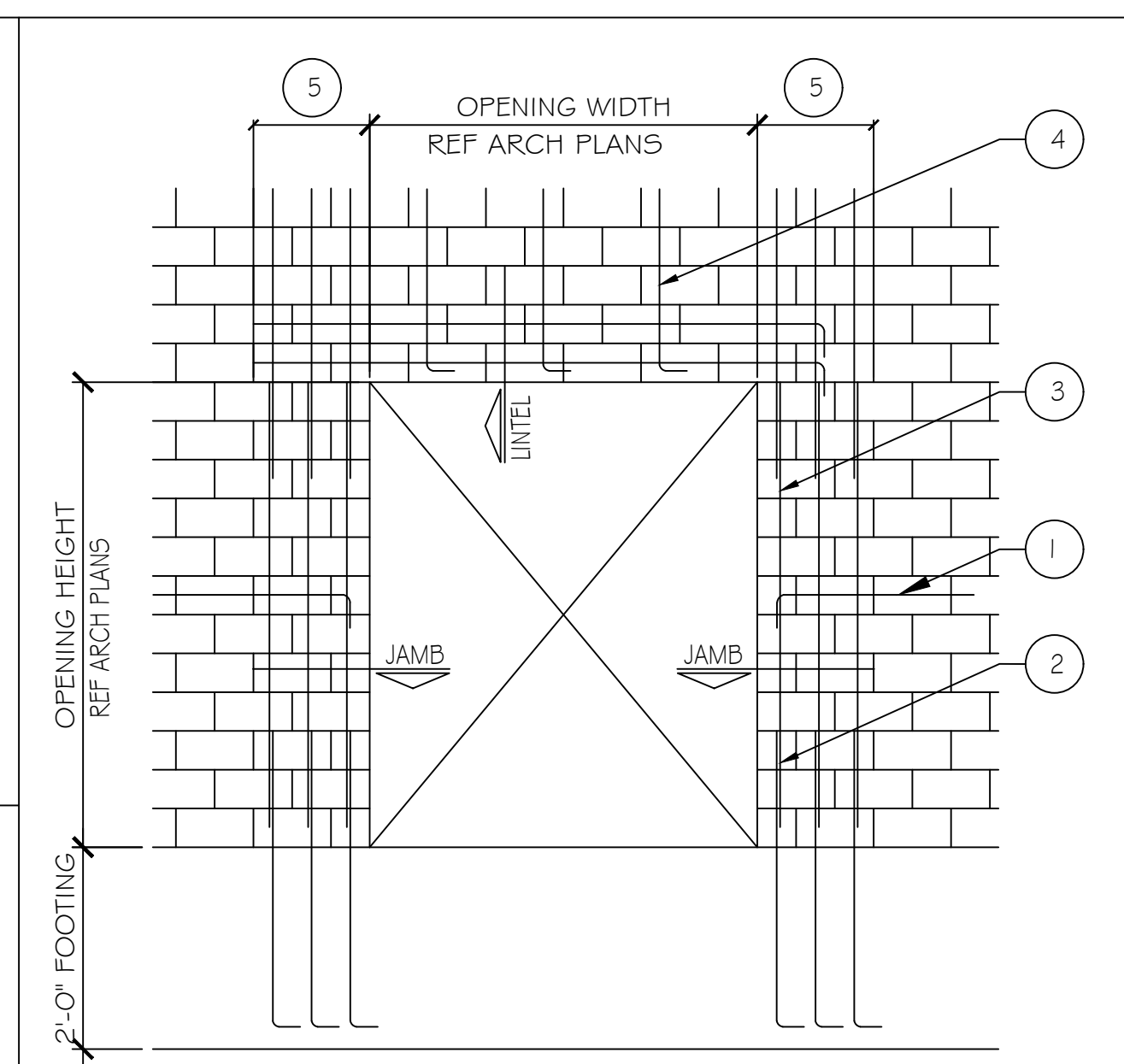
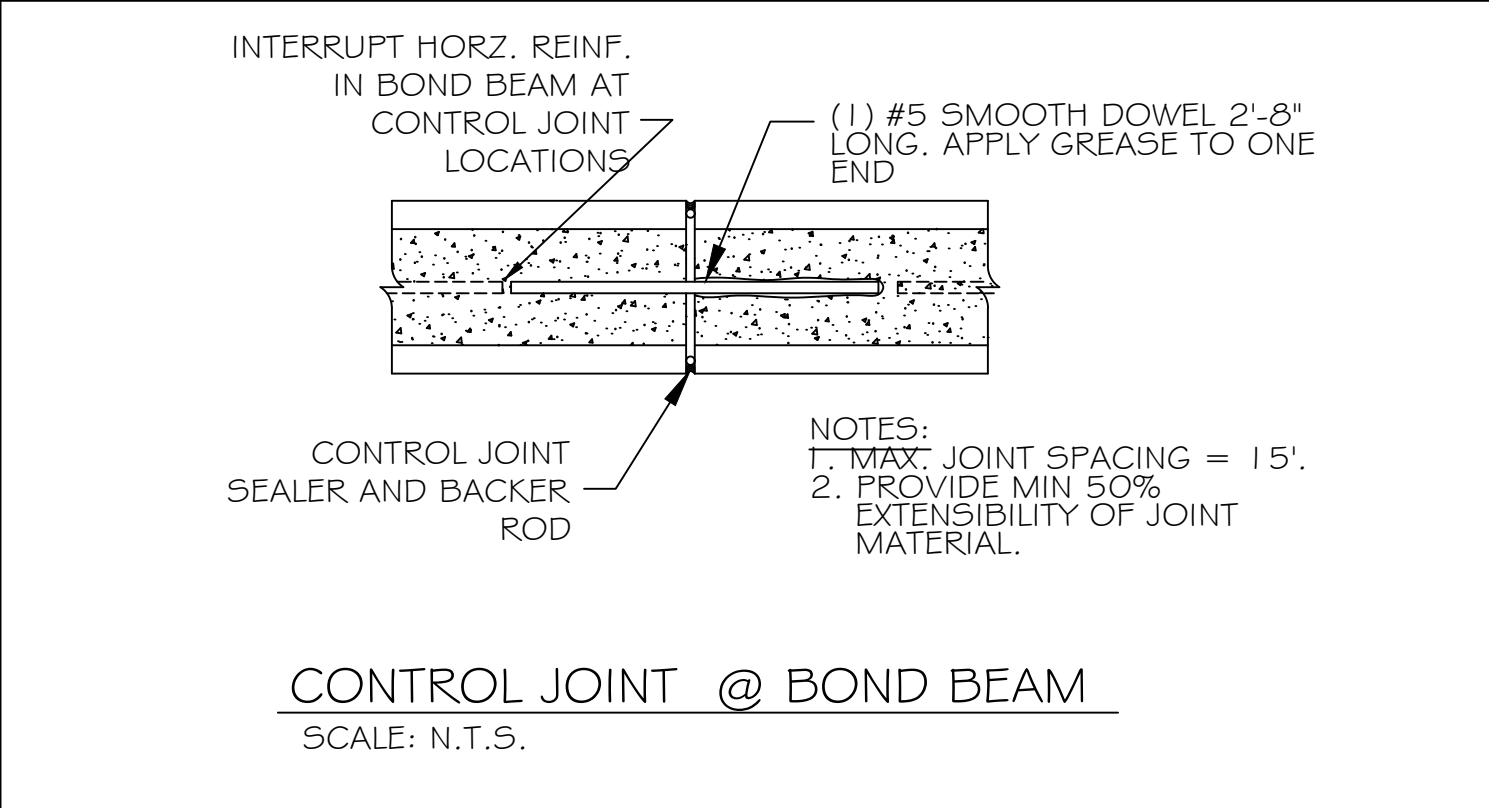
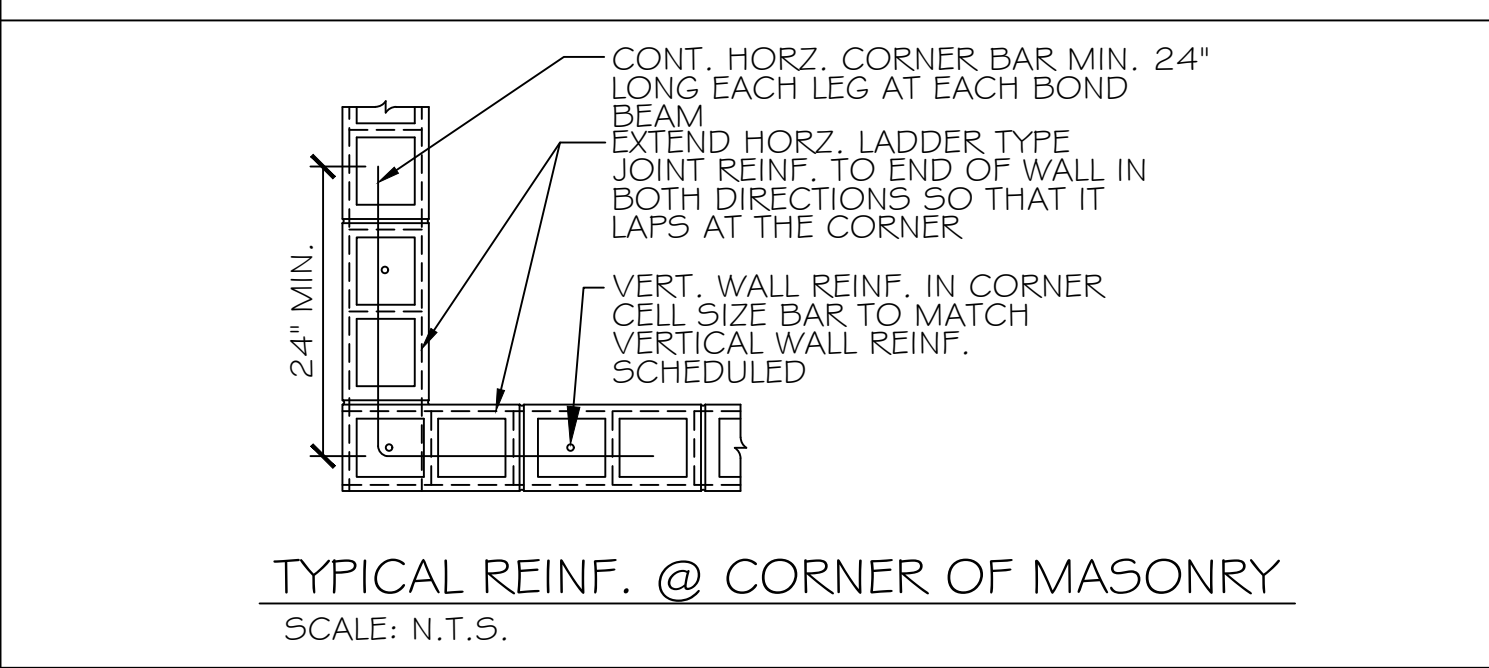
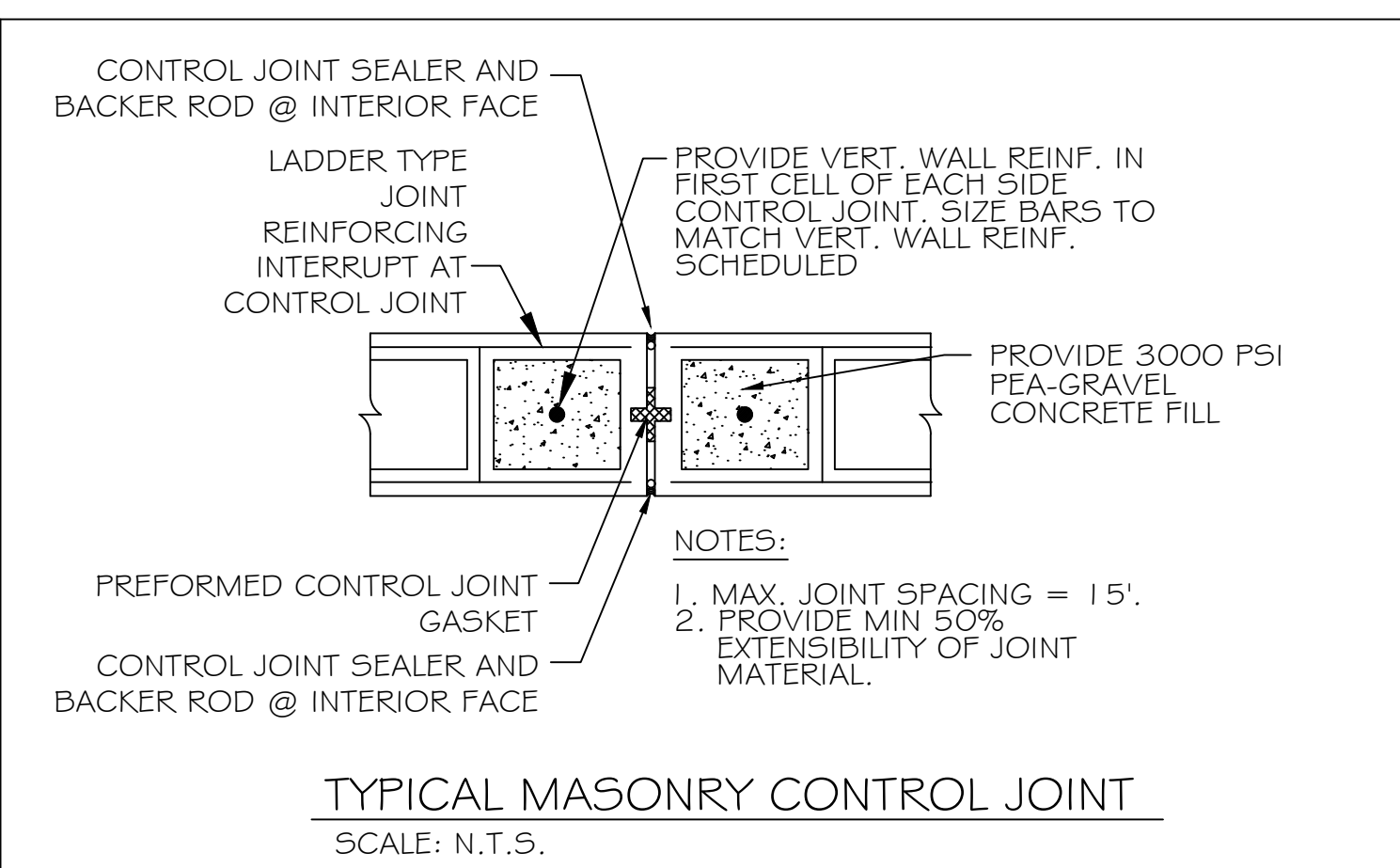


LEGEND

- INDICATES CONTINUOUS NO. 5 VERTICAL REINF. W/ 3000 PSI CONCRETE FILL.
- INDICATES MASONRY CONTROL JOINT. SEE DETAIL THIS SHEET

CMU LINTEL SCHEDULE			
WIDTH (W)	CLEAR SPAN	DEPTH (D)	HORIZ. REINF.
8" TYP AT ALL CMU WALLS	UP TO 3'-4"	8"	(1) #6 BOTTOM
	UP TO 6'-4"	16"	(1) #6 T&B
	UP TO 14'-0"	24"	(2) #6 T&B

PROVIDE 3000 PSI PEA-GRAVEL CONCRETE FILL FOR ALL LINTELS.



- NOTES:**
- WHERE HORIZ. REINFORCEMENT IS INTERRUPTED BY OPENING OR CONTROL JOINT PROVIDE STANDARD ACI HOOK WITH VERT. WALL REINF. AT END CELL.
 - SPLICES IN VERT. REINF. REF. WALL SECTIONS S-3.
 - ALL VERT. BARS AT DOOR JAMBS TO BE FULL HEIGHT.
 - CONTINUE VERT. WALL REINF. OVER OPENING. ANCHOR VERT. REINF. INTO LINTEL BEAM WITH STANDARD ACI HOOK.
 - EXTEND LINTEL A MIN. 2'-0" BEYOND FACE OF OPENING EACH SIDE FOR STRAIGHT LINTEL REINF. AND 1'-0" FOR LINTEL REINF. WITH STANDARD ACI HOOK.

DAMMON ENGINEERING, INC.
LOUISIANA & MISSISSIPPI

Chief Engineer: Brian Watich, PE
554 Old Spanish Trail
Slidell, LA 70468
www.dammonengineering.com
info@dammonengineering.com
PH: 985.649.8832 F: 985.641.9590

#	DESCRIPTION	DATE

REVISIONS

THE SIXTH URBAN RESISTANCE FOUNDATION

928 FELICITY STREET
NEW ORLEANS, LA 70130

JOB No: 02-08-2025
DATE: 02-08-2025
DRAWN BY: BAW
CHECKED BY: CKD

SHEET TITLE:
CMU PLAN

DRAWING NUMBER:
S102

SHEET No: 6 of 10