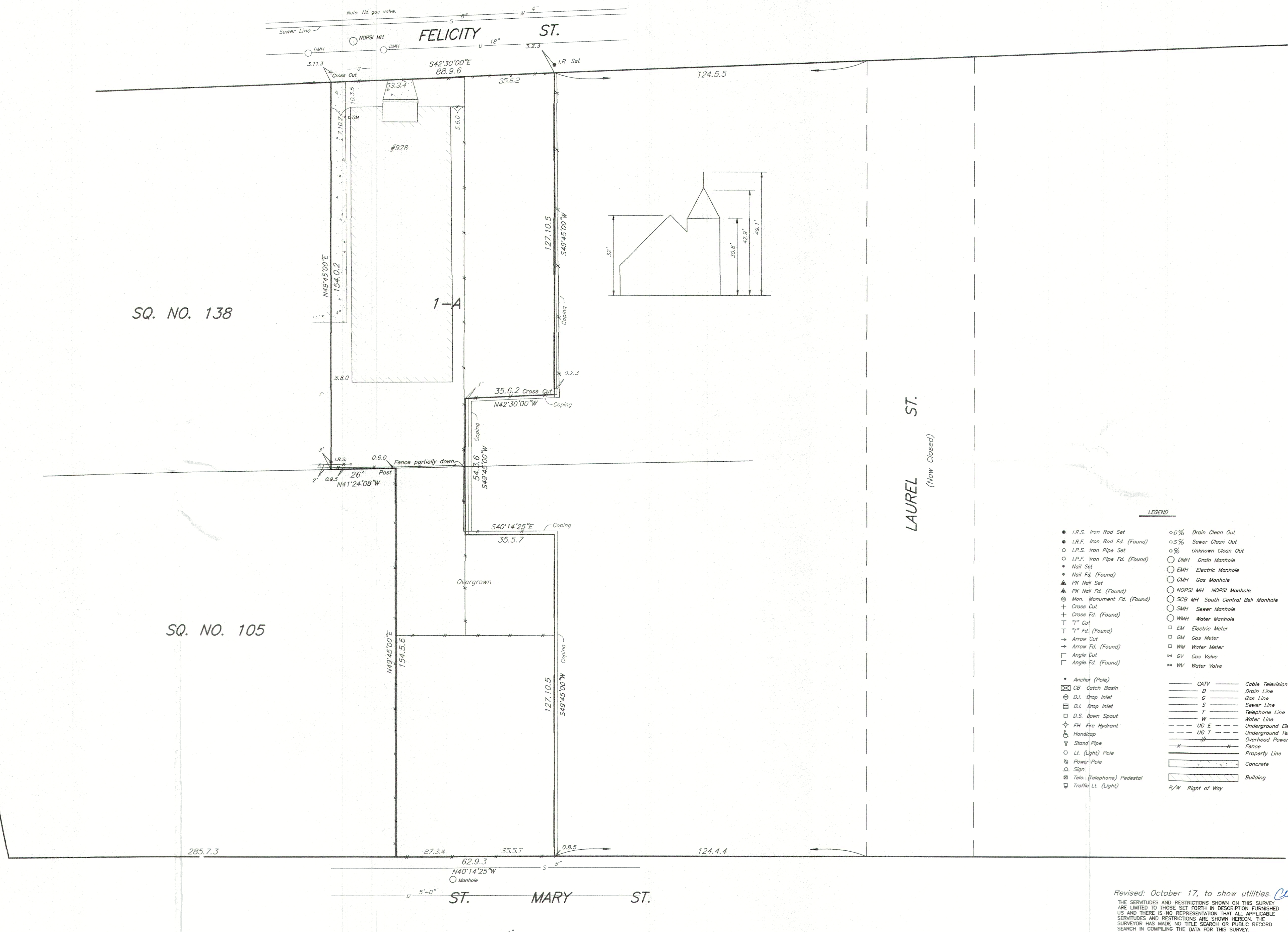
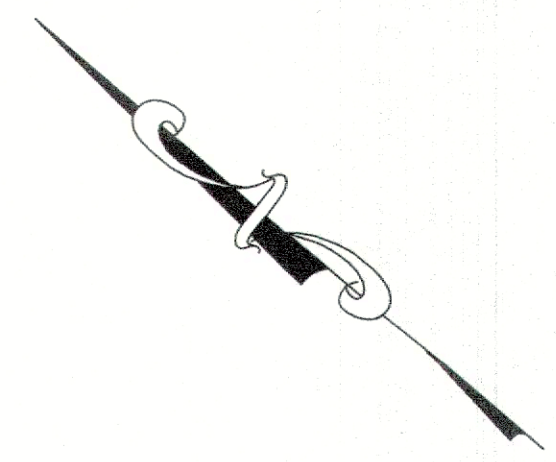


SQ. NO. 105-138
FOURTH DISTRICT
(Lot 1-A)

ORLEANS PARISH
NEW ORLEANS, LA



LEGEND

● I.R.S. Iron Rod Set	○ D% Drain Clean Out
● I.R.F. Iron Rod Fd. (Found)	○ S% Sewer Clean Out
○ I.P.S. Iron Pipe Set	○ Unknown Clean Out
○ I.P.F. Iron Pipe Fd. (Found)	○ DMH Drain Manhole
● Nail Set	○ EMH Electric Manhole
● Nail Fd. (Found)	○ GMH Gas Manhole
▲ PK Nail Set	○ NOPSI MH NOPSI Manhole
▲ PK Nail Fd. (Found)	○ SCB MH South Central Bell Manhole
⊙ Mon. Monument Fd. (Found)	○ SMH Sewer Manhole
+ Cross Cut	○ WMH Water Manhole
+ Cross Fd. (Found)	○ EM Electric Meter
T T Cut	○ GM Gas Meter
T T Fd. (Found)	○ WM Water Meter
→ Arrow Cut	⊕ GV Gas Valve
→ Arrow Fd. (Found)	⊕ WV Water Valve
⊔ Angle Cut	
⊔ Angle Fd. (Found)	
● Anchor (Pole)	— CATV — Cable Television Line
☒ CB Catch Basin	— D — Drain Line
⊙ D.I. Drop Inlet	— G — Gas Line
⊙ D.I. Drop Inlet	— S — Sewer Line
⊙ D.S. Down Spout	— T — Telephone Line
⊙ FH Fire Hydrant	— W — Water Line
⊙ Handicap	— UG E — Underground Electric Line
⊙ Stand Pipe	— UG T — Underground Telephone Line
○ Lt. (Light) Pole	— — — Overhead Power Line
⊙ Power Pole	— — — Fence
⊙ Sign	— — — Property Line
⊙ Tele. (Telephone) Pedestal	— — — Concrete
⊙ Traffic Lt. (Light)	— — — Building
	R/W Right of Way

ANNUNCIATION ST. SIDE

LAUREL ST. (Now Closed)

HASTINGS PL. (Late Magazine Pl.)

SQ. NO. 138

SQ. NO. 105

ST. MARY ST.

Call before you dig.
Ticket No. 220684693

Note:
The locations of underground and other nonvisible utilities shown hereon have been determined from data and/or extracted from records made available to us by agencies controlling such records. Where found, the surface features of locations are shown. The ACTUAL nonvisible locations may vary from those shown hereon. Each agency should be contacted relative to the precise location of its underground installation prior to any reliance upon the accuracy of such locations shown hereon, including prior to excavation and digging.

Revised: October 17, to show utilities. *Clint Simion*
THE SERVICES AND RESTRICTIONS SHOWN ON THIS SURVEY ARE LIMITED TO THOSE SET FORTH IN DESCRIPTION FURNISHED US AND THERE IS NO REPRESENTATION THAT ALL APPLICABLE SERVICES AND RESTRICTIONS ARE SHOWN HEREON. THE SURVEYOR HAS MADE NO TITLE SEARCH OR PUBLIC RECORD SEARCH IN COMPILING THE DATA FOR THIS SURVEY.
Improvements may not be to scale for clarity. The dimensions shown prevail over scale.
All lot bearings as per plan.

Date: October 4, 2022
Scale: 1" = 20'
This plat represents an actual ground survey made by me or under my direct supervision and control and meets the requirements for the Standards of Practice for Boundary Surveys as found in Louisiana Administrative Code TITLE 46:IXI, Chapter 25 for a Class "C" survey.
Made at the request of Hewitt-Washington & Associates.

Gilbert, Kelly & Couturie, Inc., Surveying & Engineering
2121 N. Causeway Blvd., Metairie LA 70001 (504) 836-2121 *Clint Simion*



X:\GIC CAD DRAWINGS\4th District\Sp. 100-198\167028 (9'6-28 Felicity) LOT 1-A.dwg, 10/18/2022 12:53:33 PM