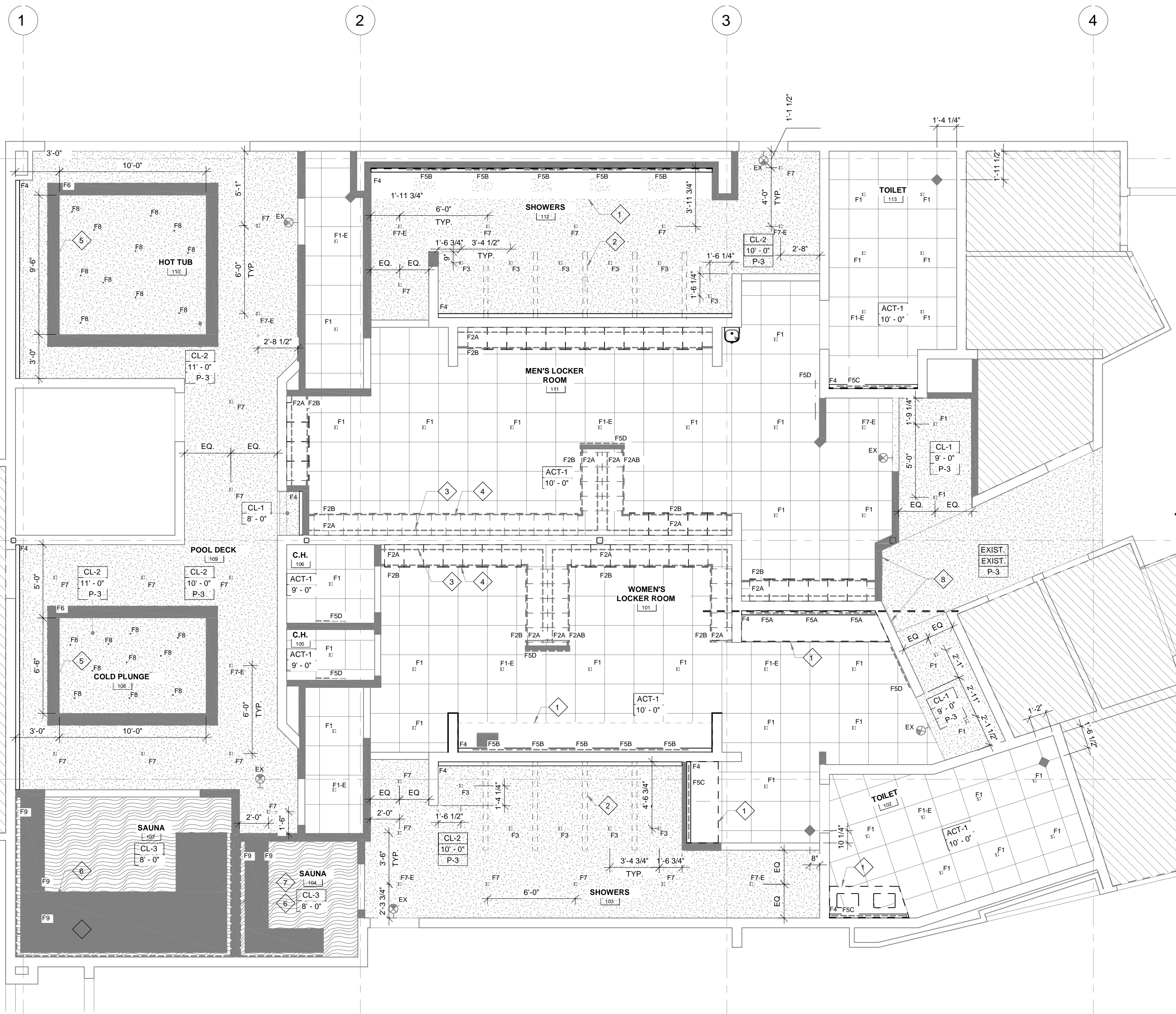


FILE NAME: A:\1 - Commercial\3337 - One Glen Atchafalaya Home\Architect\Work\609\A105 - REFLECTED CEILING PLAN.dwg - PLOT DATE & TIME: Thursday, October 10, 2024 10:14:44



**61ST FLOOR BLDG A REFLECTED CEILING PLAN**  
 SCALE: 1/4"=1'-0"

**GENERAL NOTES**

1. REFER TO A104 FOR CEILING MATERIAL.
2. REFER TO E102 FOR LIGHTING FIXTURE SCHEDULES.
3. REFER TO ELECTRICAL DRAWINGS FOR LIGHTING SCHEDULE AND FURTHER INFORMATION.
4. COORDINATE WITH SPRINKLER CONTRACTOR:
  - a. ALL SPRINKLER HEADS ARE TO BE CONCEALED TYPE.
  - b. PROVIDE HIGH TEMPERATURE HEADS IN SAUNAS (BLUE-286 DEGREE STAINLESS STEEL)

**CEILING KEY**

MARK	TYPE
ACT-1	2 X 2 ACOUSTICAL TILE IN XL 9/16" GRID, WHITE
CL-1	GYPSUM BOARD
CL-2	MOISTURE RESISTANT GYPSUM BOARD
CL-3	FRT PLYWOOD
	TILE OVER CEMENTITIOUS BACKER BOARD

**RCP NOTES**

- 1 CASEWORK BELOW.
- 2 PARTIAL HEIGHT WALL BELOW.
- 3 LIGHTING FIXTURE MOUNTED ON TOP OF LOCKERS. REFER TO DETAILS.
- 4 LIGHTING FIXTURE AT TOE KICK.
- 5 LIGHTING FIXTURE MOUNTED ON TOP OF SOFFIT.
- 6 LIGHTING FIXTURE AT BENCH.
- 7 (2) LINES OF LIGHTING AT BENCH BACK.
- 8 PROPOSED METAL BACK LIT SIGNAGE ON STANDOFF; PROVIDED BY OWNERS SIGNAGE VENDOR.

**GENERAL RCP NOTES**

1. REFER TO FINISH AND MATERIAL SCHEDULE ON A104 FOR ADDITIONAL FINISH, MATERIAL AND CEILING INFORMATION.
2. REFER TO ELECTRICAL DRAWINGS FOR LIGHTING FIXTURE SCHEDULE.
3. ACCESS PANELS SHALL BE PAINTED TO MATCH ADJACENT WALL/CEILING COLOR UNLESS OTHERWISE NOTED.
4. ALL EXPOSED STRUCTURE, PIPEWORK, DUCKWORK, ETC. AT CEILING TO BE PREPARED FOR PAINT FINISH UNLESS OTHERWISE NOTED. SEE FINISH SCHEDULE.
5. ALL CEILING HEIGHTS NOTED ARE MEASURED FROM FINISHED FLOOR.
6. REFER TO MECHANICAL DRAWINGS FOR DIFFUSER AND REGISTER INFORMATION.
7. GENERAL CONTRACTOR TO VERIFY EXTENT AND TYPE OF EXIT AND EMERGENCY LIGHTING REQUIREMENTS WITH ELECTRICAL ENGINEER AND PER APPLICABLE CODES.
8. CEILINGS IN ALL AREAS UNDER CONTRACT TO BE INSTALLED IN STRICT ACCORDANCE WITH MANUFACTURERS' SPECIFICATIONS, LOCAL BUILDING CODES AND ALL OTHER APPLICABLE CODES. PROVIDE LATERAL BRACING.
9. VERIFY ALL CEILING HEIGHTS AND CEILING FLENUM CLEARANCES TO ASSURE FINISHED CEILING HEIGHTS CALLED OUT ON FABIANO DESIGNS' DOCUMENTS. ANY DISCREPANCIES SHALL BE BROUGHT TO FABIANO DESIGNS' ATTENTION IMMEDIATELY, PRIOR TO COMMENCEMENT OF WORK.
10. ANY DISCREPANCIES AMONG FIXTURES, FIRE AND SMOKE DETECTION DEVICES, HVAC OR OTHER CONDITIONS SHALL BE BROUGHT TO THE ATTENTION OF FABIANO DESIGNS FOR CLARIFICATION.
11. ALL DIMENSIONS ARE TO CENTER LINE OF FIXTURE, UNLESS OTHERWISE NOTED.
12. WHEN MORE THAN ONE LIGHT SWITCH OR FAN CONTROL SWITCH OCCURS IN ONE LOCATION, GANS SWITCHES TOGETHER AND PROVIDE A COMMON SWITCH PLATE COVER.
13. ALL CEILING GRIDS TO BE CENTERED IN SPACES WITH EQUAL TILES AT OPPOSITE SIDES AS SHOWN UNLESS OTHERWISE NOTED. SLIVERS OF TILE AT THE EDGES SHOULD BE AVOIDED.
14. ALL LIGHTING FIXTURES TO BE CENTERED ON LAY-IN PANELS IN SUSPENDED CEILING AREAS AS SHOWN UNLESS OTHERWISE NOTED.
15. PROVIDE ADDITIONAL BLOCKING AND/OR ANCHORING ABOVE CEILINGS FOR SUPPORT OF LIGHT FIXTURES, AND CONCEALED BLOCKING TO BE FIRE RETARDANT.

**DAMMON ENGINEERING, INC.**  
 LOUISIANA & MISSISSIPPI  
 Chief Engineer: Brian Metch, PE  
 554 Old Spanish Trail  
 Slidell, LA 70588  
 www.dammonengineering.com  
 info@dammonengineering.com  
 PH: 985.649.5832

#	DESCRIPTION	DATE

SEAL:

**MENS AND WOMENS LOCKER ROOM**  
**CROSSETTES**  
**ATHLETIC CLUB**  
 200 NORTH MILITARY ROAD  
 SLIDELL, LA  
 JOB No: 2527 DATE: 10-10-2024  
 DRAWN BY: LJP CHECKED BY: JMS

SHEET TITLE:  
**1ST FLOOR BLDG A REFLECTED CEILING PLAN**  
 DRAWING NUMBER:  
**A105**  
 SHEET No: 8 of 17