

LIGHTING SCHEDULE

MARK	DESCRIPTION	MANUFACTURER	MODEL NO.	LAMP	
F1	2' x 2' SQUARE DOWNLIGHT	SOLAIS	ST2ARM-S*-PW-BDM-PW-FL-4-95-900-UNV2-CT*	0 - 10V, 1% DIMMING	
F2A	TAPE LIGHT WITH CHANNEL	LUMINI	BA42-SO-95K*-BSC-G-PDCU-M*-24	0 - 10V, 1% DIMMING	ON TOP OF LOCKERS
F2B	TAPE LIGHT WITH CHANNEL	LUMINI	BA42-SO-95K*-BSC-G-PDCU-M*-24	0 - 10V, 1% DIMMING	AT TOE KICK OF LOCKERS
F3	2' x 2' DOWNLIGHT - SHOWERS	SOLAIS	ST2ARM-S*-PW-BDM-PW-NFL-4-95-900-UNV2-CT*	0 - 10V, 1% DIMMING	
F4	COVE LIGHT-DAMP AREA	CORONET LED	EZ-PW*-95-LOW-UNV-DB-M-COVE-E-WAO*	-	
F3A	BACKLIT MIRROR	-	-	0 - 10V, 1% DIMMING	REFER TO TOILET ACCESSORIES FOR SPECIFICATIONS
F3B	BACKLIT MIRROR	-	-	0 - 10V, 1% DIMMING	REFER TO TOILET ACCESSORIES FOR SPECIFICATIONS
F3C	BACKLIT MIRROR	-	-	0 - 10V, 1% DIMMING	REFER TO TOILET ACCESSORIES FOR SPECIFICATIONS
F3D	BACKLIT MIRROR	-	-	0 - 10V, 1% DIMMING	REFER TO TOILET ACCESSORIES FOR SPECIFICATIONS

F6	TAPE LIGHT WITH CHANNEL-DAMP AREA	LUMINI	BA42MET-HO-92K*-BXC-F-PDCU-M*-24	0 - 10V, 1% DIMMING	
F7	2' x 2' SQUARE DOWNLIGHT-DAMP AREA	SOLAIS	ST2ARM-S*-PW-BDM-PW-FL-4-95-900-UNV2-CT*	0 - 10V, 1% DIMMING	
F8	1' DOWNLIGHT	BRUCK LIGHTING	NU1-RDDR-SM-OTLM-95K-40-30D-DL-PH-PH-LVL-DX-C*-UNV-DIM10*		
F9	TAPE LIGHT -SAUNA	LUMINI	KLB-S-VB*-93LO-95K-SF-MC-KBL-SAP-SM-O-B-SAWH*-PDCU-M*-24		AT SAUNA BENCH AND BACK
EX	EXIT LIGHT		ELXTEU-1-S-C-W*		

EQUIPMENT SCHEDULE

NOTE: GENERAL CONTRACTOR TO COORDINATE WITH OWNER ON CONTRACTOR INSTALLED ITEMS.

MARK	DESCRIPTION	MANUFACTURER	MODEL NO.	REMARK
EQ1	SCALE			

GENERAL LIGHTING NOTES

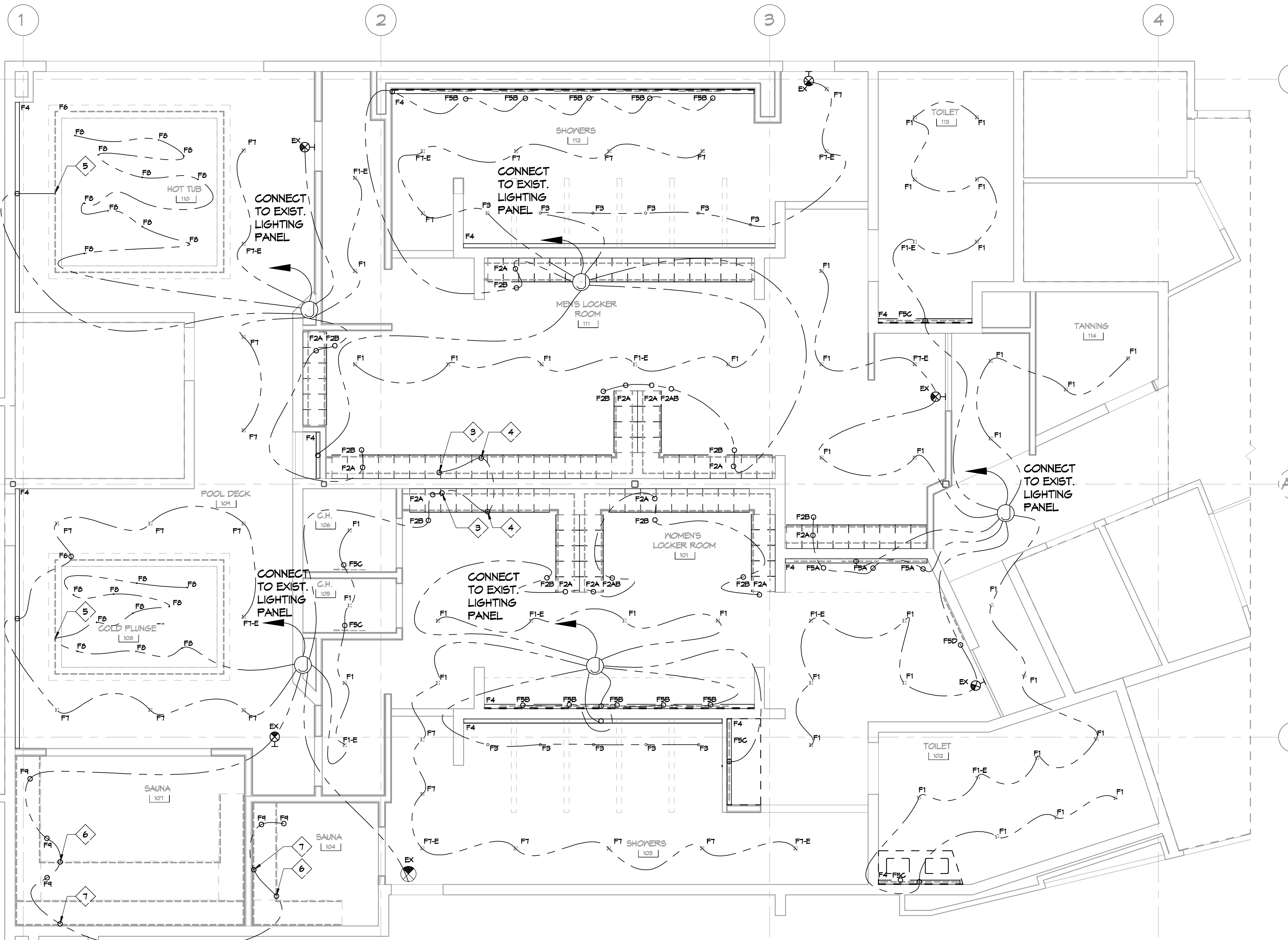
- ALL WORK SHALL COMPLY WITH APPLICABLE NATIONAL, STATE, AND LOCAL CODES, RULES, REGULATIONS, AND REQUIREMENTS OF THE SERVICE UTILITY COMPANY.
- GENERAL CONTRACTOR SHALL NOTIFY THE ARCHITECT IMMEDIATELY IF ANY CONFLICTS OCCUR BETWEEN LIGHTING AND ANY OTHER TRADE. DO NOT PROCEED WITH INSTALLATION IN THAT AREA UNTIL CONFLICT HAS BEEN RESOLVED TO THE SATISFACTION OF THE ARCHITECT AND ENGINEER.
- REFER TO ARCHITECTURAL DRAWINGS FOR EXACT LOCATION AND MOUNTING INSTRUCTIONS FOR ALL LIGHT FIXTURES. NOTIFY THE ARCHITECT AND ENGINEER OF ANY DISCREPANCIES BETWEEN THESE PLANS AND THE ARCHITECTURAL PLANS RELATING TO QUANTITY, TYPE AND LOCATION OF DEVICES AND/OR FIXTURES.
- WHEN SPECIFIC LIGHT FIXTURE HAS BEEN SPECIFIED IN THE FIXTURE SCHEDULE, ELECTRICAL CONTRACTOR SHALL PROVIDE COMPLETE ASSEMBLY INCLUDING ALL PARTS AND HARDWARE TO INSURE PROPER FUNCTIONING FIXTURE.
- ALL CONDUCTORS SHALL BE A MINIMUM OF #12 AWG UNLESS NOTED OTHERWISE.
- ALL 120V RUNS LONGER THAN 60 FEET SHALL BE #10 AWG AND 277V RUNS LONGER THAN 150 FEET SHALL BE #10 AWG UNLESS NOTED OTHERWISE.
- ALL CONDUCTORS SHALL BE COPPER.
- WHERE CONDUCTOR SIZES ARE NOTED ON DRAWINGS, THAT WIRE SIZE SHALL BE THROUGH THE ENTIRE RUN UNLESS OTHERWISE NOTED.
- MOUNTED LIGHT SWITCHES 48" AFF UNLESS NOTED OTHERWISE ON ARCHITECTURAL DRAWINGS.
- WHERE MORE THAN ONE SWITCH OCCURS IN THE SAME LOCATION, THEY SHALL BE INSTALLED IN A GANG TYPE BOX UNDER ONE COVER PLATE. ALL GANGED SWITCHES SHALL HAVE A COMMON SEAMLESS FACEPLATE. EACH MULTI-GANGED BOX SHALL BE NO MORE THAN SIX (6) SWITCHES WIDE. WHERE MORE THAN SIX (6) SWITCHES ARE SHOWN AT ONE (1) LOCATION, ADDITIONAL MULTI-GANGED BOXES SHALL BE STACKED VERTICALLY AND THE WIDTH OF THE MULTI-GANGS SHALL BE AS EVEN AS POSSIBLE.
- EACH DIMMER SWITCH SHALL HAVE A WATTAGE RATING 25% HIGHER THAN THE TOTAL WATTAGE OF ALL LIGHTS TO BE CONTROLLED BY THE DIMMER. DIMMER SIZES 600, 1000, 1500, AND 2000 WATTS, LUTRON NOVA T-STAR. WHERE SWITCHES ARE GANGED WITH DIMMERS, THE SWITCHES SHALL ALSO BE LUTRON NOVA T-STAR. FLUORESCENT AND LOW VOLTAGE DIMMERS SHALL BE LUTRON NOVA T-STAR.
- ALL EMERGENCY EXIT LIGHT FIXTURES SHALL HAVE 90 MINUTE BATTERY BACKUP WITH INTEGRAL TEST BUTTON AND SHALL BURN CONTINUOUSLY.
- ALL FLUORESCENT FIXTURES THAT UTILIZE DOUBLE-ENDED LAMPS AND CONTAIN BALLASTS SHALL BE PROVIDED WITH A DISCONNECTING MEANS IN ACCORDANCE WITH NEC 410.136.

RCP NOTES

- CASEWORK BELOW.
- PARTIAL HEIGHT WALL BELOW.
- LIGHTING FIXTURE MOUNTED ON TOP OF LOCKERS, REFER TO DETAILS.
- LIGHTING FIXTURE AT TOE KICK.
- LIGHTING FIXTURE MOUNTED ON TOP OF SOFFIT.
- LIGHTING FIXTURE AT BENCH.
- (2) LINES OF LIGHTING AT BENCH BACK.
- PROPOSED METAL BACK LIT SIGNAGE ON STANDOFF, PROVIDED BY OWNERS SIGNAGE VENDOR.

LIGHTING LEGEND

- JUNCTION BOX
- ELECTRICAL WIRING
- HOME RUN



81ST FLOOR BLDG A LIGHTING PLAN
SCALE: 1/4"=1'-0"

DAMMON ENGINEERING, INC.
LOUISIANA & MISSISSIPPI
www.dammonengineering.com
info@dammonengineering.com
PH: 985.649.5832

Chief Engineer: Brian Misch, PE
554 Old Spanish Trail
Slidell, LA 70588

REVISIONS	DATE



**MENS AND WOMENS LOCKER ROOM
COSMETIC CLUB**

200 NORTH MILITARY ROAD
SLIDELL, LA

JOB No: 2937 DATE: 10-10-2024
LIP CHECKED BY: BAM
DRAWN BY: LIP

SHEET TITLE:
1ST FLOOR BLDG A
LIGHTING PLAN

DRAWING NUMBER:
E102

SHEET No: 15 of 17