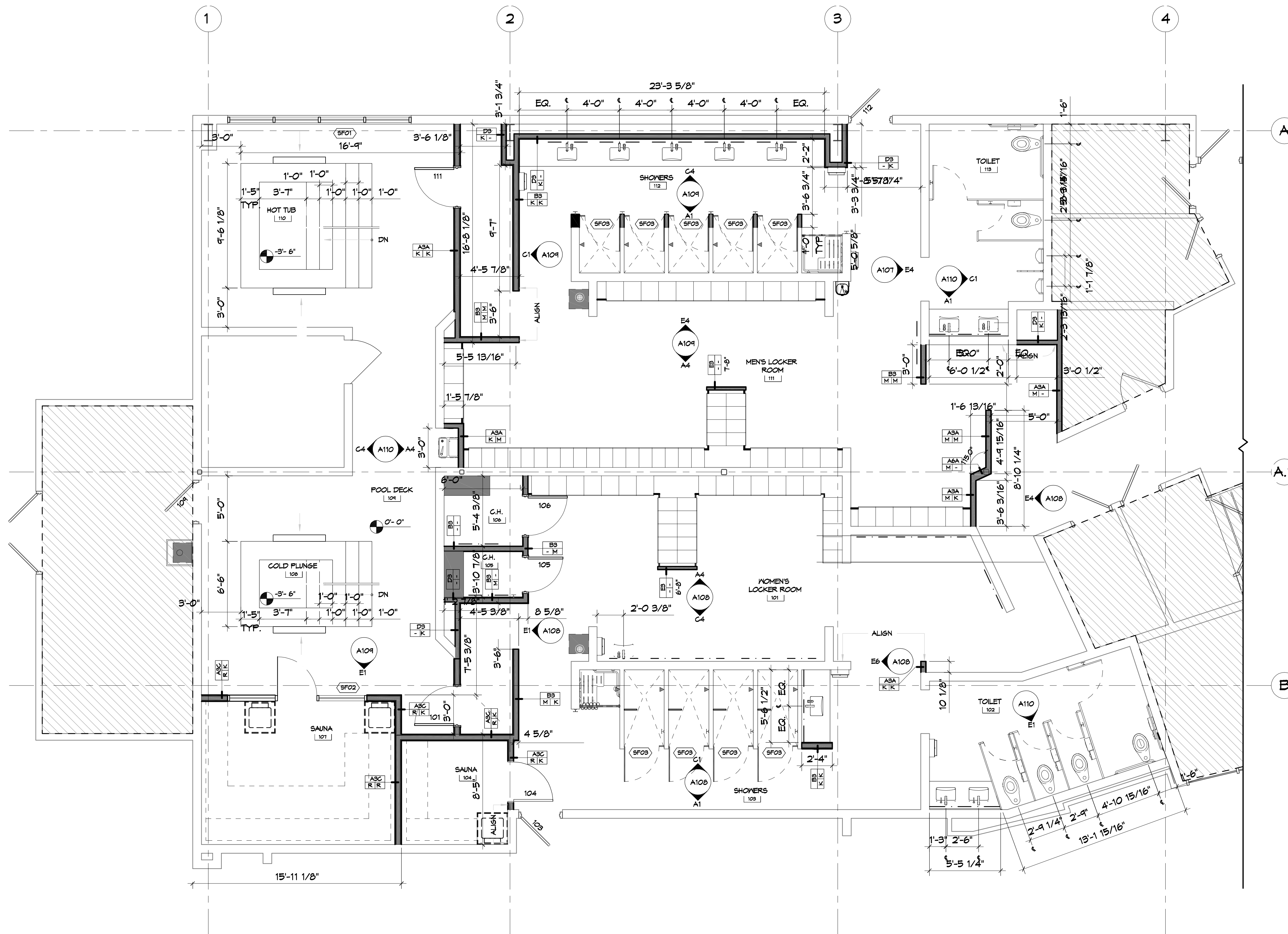


D:\L\DWG\41st Floor\41st Floor Bldg A Construction Floor Plan.dwg - 12/20/24 10:30:34 AM



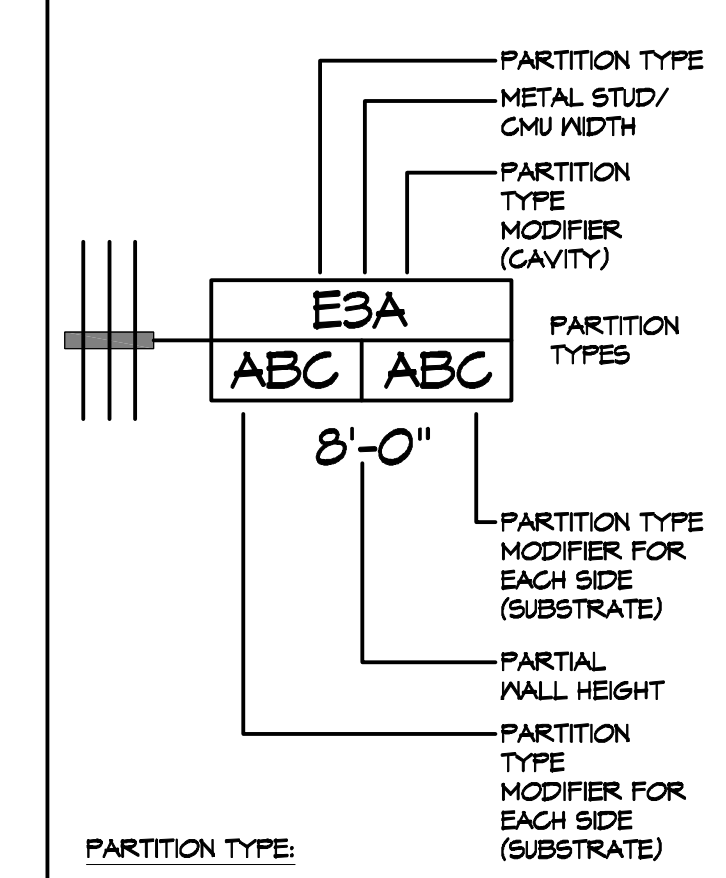
41ST FLOOR BLDG A CONSTRUCTION FLOOR PLAN
 SCALE: 1/4"=1'-0"

GENERAL NOTES

- REFER TO A107 FOR PARTITION TYPES AND DETAILS.
- REFER TO P102 FOR PLUMBING SCHEDULE.
- REFER TO A106 FOR DOOR SCHEDULE.

LEGEND

PARTITION TYPE SYMBOL



- PARTITION TYPE MODIFIER (CAVITY):**
- PROVIDE ACOUSTICAL BATT INSULATION FULL DEPTH AND HEIGHT OF EACH METAL STUD CAVITY.
 - PROVIDE ACOUSTICAL STONE WOOL INSULATION (ROXUL) FULL DEPTH AND HEIGHT OF EACH METAL STUD CAVITY.
 - PROVIDE THERMAL INSULATION BATT R-19 FULL HEIGHT IN EACH STUD CAVITY AS DETAILED.
- PARTITION TYPE MODIFIER (SUBSTRATE):**
- PROVIDE (1) LAYER 5/8" MOISTURE RESISTANT GYPSUM BOARD IN PLACE OF GYPSUM BOARD ON THE SIDE EXPOSED TO MOISTURE.
 - PROVIDE (1) LAYER OF 5/8" CEMENT BOARD IN PLACE OF GYPSUM BOARD ON THE SIDE WITH TILE FINISH.
 - PROVIDE (1) LAYER OF 5/8" KERDI BOARD IN PLACE OF GYPSUM BOARD ON THE SIDE WITH FINISH.
 - PROVIDE (1) LAYER OF 5/8" CEMENT BOARD UP TO HEIGHT INDICATED ON INTERIOR ELEVATIONS IN PLACE OF GYPSUM BOARD ON THE SIDE WITH TILE FINISH.
 - PROVIDE (1) LAYER OF 5/8" KERDI BOARD UP TO HEIGHT INDICATED ON INTERIOR ELEVATIONS IN PLACE OF GYPSUM BOARD ON THE SIDE WITH TILE FINISH.
 - SUB-MODIFIER TO "M": PROVIDE MOISTURE RESISTANT GYPSUM BOARD IN PLACE OF GYPSUM BOARD ABOVE TILE FINISH.
 - PROVIDE (1) ADDITIONAL LAYER OF 5/8" GYPSUM BOARD ATTACHED TO (1) SIDE OF SCHEDULED PARTITION TYPE AS INDICATED. SPECIALTY SPACE - REFER TO DETAILS.
 - ASSEMBLY WITHIN STEAM ROOM, SAUNA, ETC. REFER TO SPECIFIC DETAILS RELATED TO SPECIAL CONSTRUCTION.

- PARTITION TYPE NOTES:**
- USE GALVANIZED METAL STUDS WHERE MOISTURE PROTECTION IS REQUIRED.
 - METAL STUD GAGE DETERMINED PER CHART BELOW:

LIMITED HEIGHT OF METAL STUD PARTITION
L/360 ALLOW DEFLECTION

DESIGNATION	STUD WIDTH	SPACING	GAUGE	LIMITED HEIGHT
2	2 1/2"	16"	20GA	12'-7"
			18GA	13'-5"
3	3 5/8"	16"	20GA	16'-0"
			18GA	17'-11"
4	4"	16"	20GA	18'-0"
			18GA	19'-4"
6	6"	16"	20GA	24'-4"
			18GA	26'-7"
8	8"	16"	20GA	30'-11"
			18GA	33'-3"

LEGEND

	EXISTING TO REMAIN
	NEW WALLS

DAMMON ENGINEERING, INC.
 LOUISIANA & MISSISSIPPI
 Chief Engineer: Brian Metch, PE
 554 Old Spanish Trail
 Slidell, LA 70588
 www.dammonengineering.com
 info@dammonengineering.com
 PH: 985.649.5832

#	DESCRIPTION	DATE



MENS AND WOMENS LOCKER ROOM
CROSSETTES
CATHLETIC CLUB
 200 NORTH MILITARY ROAD
 SLIDELL, LA
 JOB No: 2527 DATE: 10-10-2024
 DRAWN BY: LJP CHECKED BY: JMS

SHEET TITLE:
1ST FLOOR BLDG A CONSTRUCTION FLOOR PLAN
 DRAWING NUMBER:
A102
 SHEET No: 5 of 17