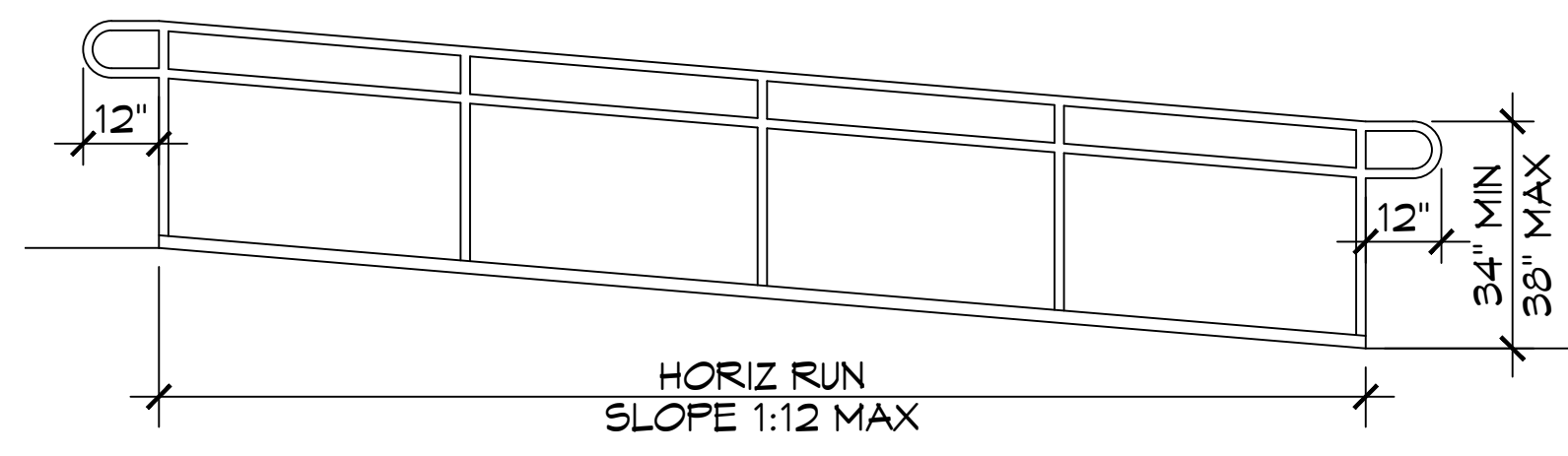


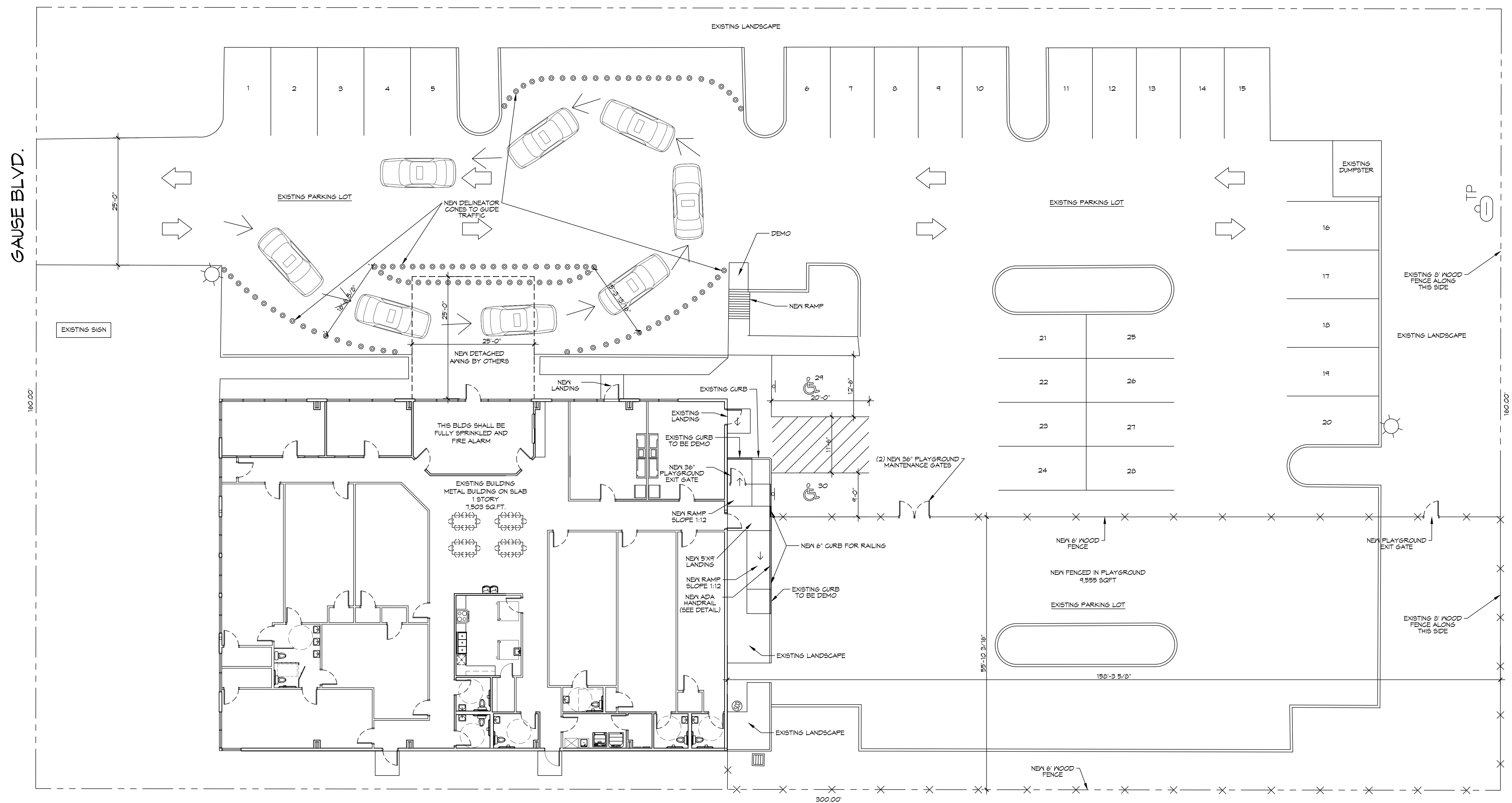
FILE NAME: \\s:_comm\dwg\civil\dwg\3101 - 3101.dwg DATE: 8/19/2025 10:02:34 AM



1 ACCESSIBLE RAMP
SCALE: N.T.S.

PARKING REQUIREMENTS
DAY CARE CENTERS REQUIRE MINIMUM OF 5 SPACES PLUS 1 FOR EVERY EMPLOYEE ON DUTY
5 SPACES
20 EMPLOYEES ON DUTY
25 PARKING SPACES REQUIRED
26 REGULAR PARKING SPACES PROVIDED
2 HANDICAP PARKING SPACES PROVIDED
TOTAL PARKING SPACES PROVIDED 28

PLANNING
ZONING DISTRICT - HC2 HIGHWAY COMMERCIAL
BUILDING SQUARE FOOTAGE
TOTAL BUILDING 7,503 SQ. F.T
FLOOD ZONE
THIS PROPERTY IS NOT IN SPECIAL FLOOD HAZARD AREA



1 PROPOSED SITE PLAN
SCALE: 1" = 10'-0"

DAMMON ENGINEERING, INC.
LOUISIANA & MISSISSIPPI
www.dammoneengineering.com
info@dammoneengineering.com
Chief Engineer: Brian Watch, PE
554 Old Spanish Trail
Slidell, LA 70468
PH: 985.649.9832

REVISIONS	DATE
# DESCRIPTION	
1	

SEAL:

NEW DAYCARE
THREE PEAS IN A POD EARLY LEARNING CENTER
2965 GAUSE BLVD
SLIDELL, LA 70461
JOB No: 2511 DATE: 2-18-2026
DRAWN BY: LJP CHECKED BY: JWS

SHEET TITLE:
PROPOSED SITE PLAN

DRAWING NUMBER:
C101
SHEET No: 3 of 13