

D.L. MARR, A.S. Commercial/Mechanical Drawings, 5101 - Mechanical, Revision 11, 2025, 3/24/25

Terminal Box Schedule						
Tag	Inlet Size (")	CFM	Inlet SP (in. wg)	kW Heat	Make / Model	Remarks
VVT-1	14	1700	0.5	5	Carrier 35EB	1
VVT-2	14	1100	0.5	5	Carrier 35EB	1
VVT-3	14	1250	0.5	5	Carrier 35EB	1
VVT-4	14	1200	0.5	5	Carrier 35EB	1
VVT-5	14	1250	0.5	5	Carrier 35EB or equal	2
VVT-6	14	1575	0.5	5	Carrier 35EB	1
VVT-7	14	1650	0.5	5	Carrier 35EB	1

- Existing air terminal box to be reused. Clean and inspect for damage. Replace in kind if damaged or if components are missing.
- Replace existing VVT-5 air terminal box (due to size).

DIFFUSER SCHEDULE					
TAG	SERVICE	NECK SIZE	DESCRIPTION		Remarks
A	Supply Air	Ref. Plan	24" x 24" Adjustable Square Cone Diffuser, Price ASCDA w/ Insulated Back Panel		1, 2, 3
B	Supply Air	Ref. Plan	12" x 12" Adjustable Square Cone Diffuser, Price ASCDA w/ Insulated Back Panel		1, 2, 3
C	Return Air	Ref. Plan	16" x 16" Perforated Return Air Diffuser, Price PDDR w/ Damper & Insulated Back Panel		1, 2, 3
D	Return Air	Ref. Plan	20" x 20" Perforated Return Air Diffuser, Price PDDR w/ Damper & Insulated Back Panel		1, 2, 3
R	Varies		Existing diffuser to be relocated / reused		4

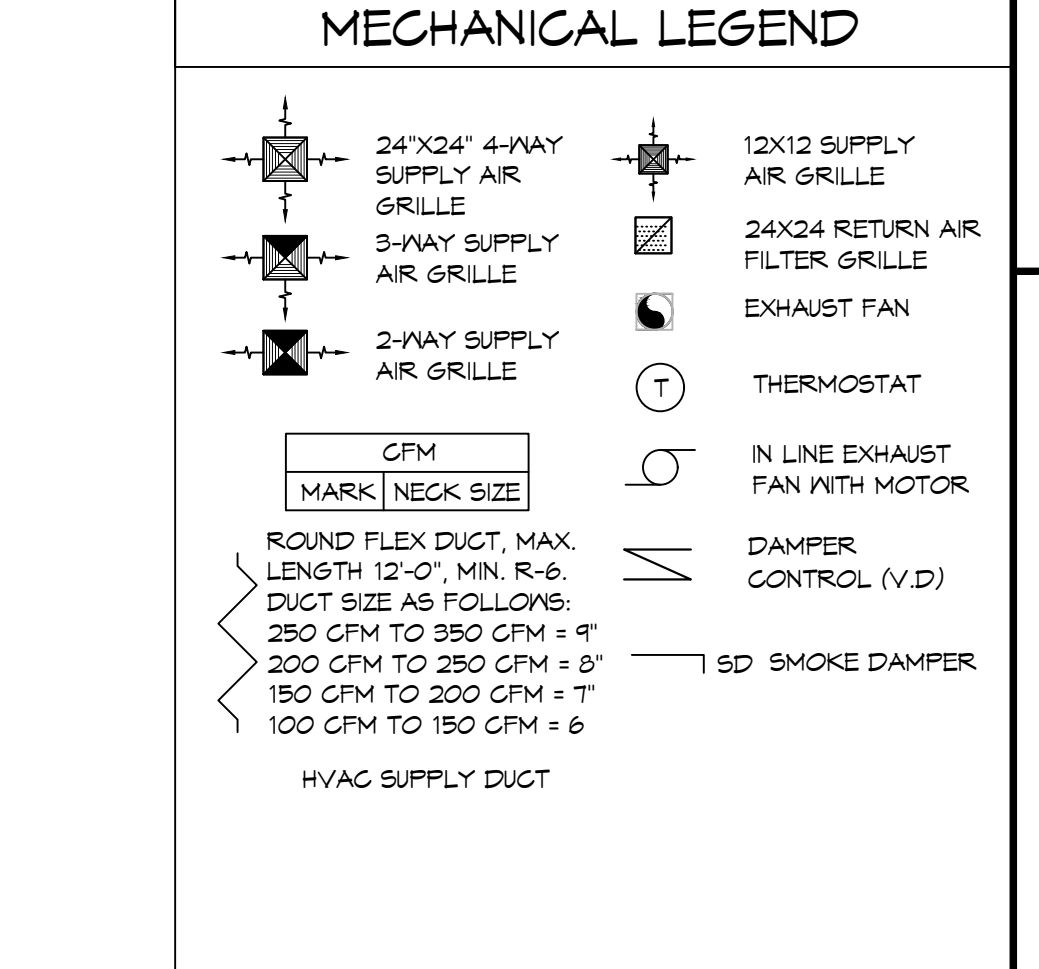
Exhaust Fan Schedule								
Tag	Fan	TSP (CFM)	Volts	Phase	Hz	Watts	Make / Model	Remarks
EF-1	110	0.2	120	1	60	47.3	Broan A110	1, 2

- Install per Manufacturer's recommendations.
- Interlock with light switch.

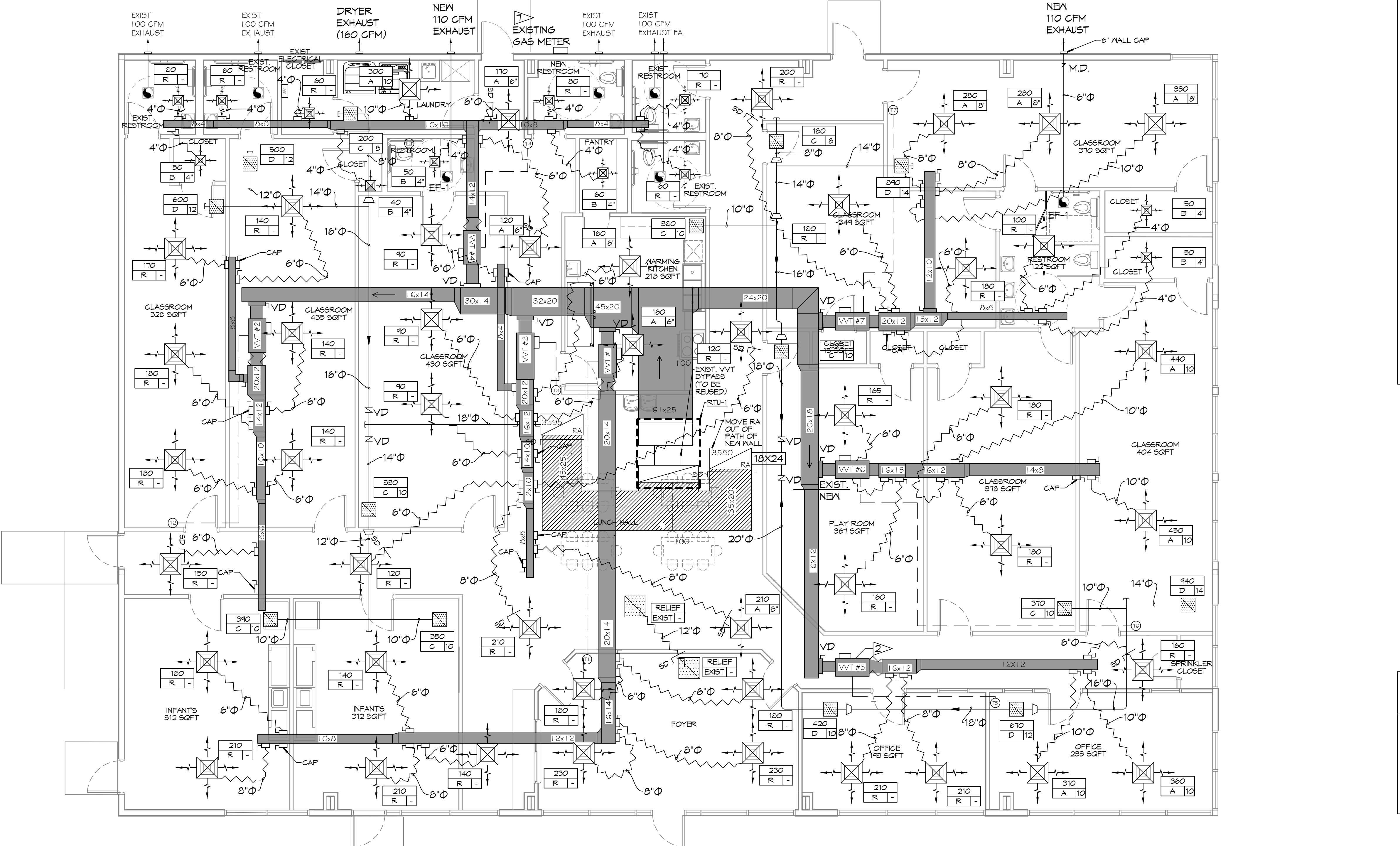
ROOFTOP SCHEDULE															
TAG	Make / Model	NOMINAL TONS	TOTAL CFM	VENTILATION AIR (CFM)	ESP (" WC)	COOLING REQ'D		GAS HEAT		POWER		MCA	REMARKS		
						TMBH	SMBH	INPUT (MBH)	OUTPUT (MBH)	Motor HP	VAC			HZ	PH
RTU-1	Trane YSD300G3RL00	25	9725	2550	0.8	303.2	180.5	250	200	7.5	208	60	3	112	1, 2, 3

- Furnish with VAV supply air temperature control, hinged MERV 13 filter access, local disconnect switch with breaker, convenience outlet, gas heat, supply air smoke detector and motorized OA damper w/ barometric relief.
- Cooling capacities to be rated in accordance with AHRI standard 210/290 for ASHRAE standard design weather conditions in New Orleans, LA.
- Install per Manufacturer's recommendations.

- ### GENERAL HVAC NOTES
- CONCEALED DUCTWORK TO BE GALVANIZED SHEET METAL WRAPPED WITH FIBROUS GLASS DUCT WRAP WITH FSK VAPOR BARRIER, MIN R-6. INSTALLED PER SMACNA STANDARDS. DUCT WORK IMMEDIATELY DOWNSTREAM FROM AHU SHALL BE LINED FOR SOUND ATTENUATION.
 - EXPOSED DUCTWORK TO BE GALVANIZED SHEET METAL LINED WITH FIBROUS GLASS DUCT LINER, MIN R-6. INSTALLED PER SMACNA STANDARDS.
 - ROUND FLEXIBLE DUCT TO BE UL-181, CLASS 1, AIR DUCT MATERIALS.
 - DUCT SIZES SHOWN ARE CLEAR INSIDE DIMENSIONS.
 - IN ALL SYSTEMS OVER 2000 CFM AND LESS THAN 15,000 CFM, SMOKE DETECTORS SHALL BE INSTALLED IN ACCORDANCE WITH NFPA 72E IN THE RETURN DUCT DOWNSTREAM OF THE AIR HANDLING UNIT AND ALL FILTERS TO AUTOMATICALLY STOP THE FAN.
 - PROVIDE UL LISTED 125 F° FIRESTAT IN RETURN AIR OF EACH SYSTEM UNDER 2000 CFM TO SHUT DOWN THE FAN IN THE EVENT OF FIRE.
 - PROVIDE UL RATED FIRE DAMPERS WHERE REQUIRED AT ALL DUCT PENETRATIONS OF FIRE-RATED ASSEMBLIES AND WHERE REQUIRED BY CODE, INCLUDING OUTSIDE AIR INTAKES AND EXHAUST FANS.
 - CONDENSATE DRAINS TO BE PVC PIPE RUN TO PLUMBERS P-TRAP WITHIN FIVE FEET OF AIR HANDLING UNITS.
 - ALL AIR HANDLING SYSTEMS TO BE BALANCED TO ASSURE PROPER AIR FLOWS PER PLANS.
 - ALL THERMOSTATS TO BE AUTOMATIC CHANGEOVER WITH HEAT SWITCH.
 - EXHAUST FAN SHALL BE CONTROLLED BY A SWITCH ON THE WALL IN THE SAME LOCATION AS LIGHT SWITCH(S). PROVIDE BACK DRAFT DAMPER.
 - PROVIDE AND INSTALL WATER PROOF GRILLE VENT IN PROPER ROOF LOCATION FOR PLUMBING FIXTURE EXHAUST.
 - ALL SUPPLY AIR VENTS SHALL BE EQUIPPED WITH AIR CONTROL DAMPERS AT THE REGISTER.
 - LOCATE OUTDOOR UNITS AS SHOWN ON ARCHITECTURAL DRAWINGS.
 - REFRIGERANT LINES SHALL BE SIZED BY UNIT MANUFACTURER AND INSTALLED ACCORDING TO MANUFACTURER'S INSTRUCTIONS.
 - FRESH AIR SHALL BE SUPPLIED TO EACH AIR HANDLER THROUGH EXTERIOR WALL DUCT SUPPLIED WITH A CONTROL DAMPER.
 - ALL ELECTRICAL, MECHANICAL, AND PLUMBING PENETRATING FIRE WALLS SHALL BE FIRE CAULKED. (PENETRATIONS THROUGH RATED CONSTRUCTION SHALL BE SEALED WITH A MATERIAL CAPABLE OF PREVENTING THE PASSAGE OF FLAMES AND HOT GASES WHEN TESTED IN ACCORDANCE WITH ASTM-E8-14).
 - ALL MECHANICAL SYMBOLS ARE DRAWN DIAGRAMMATICALLY. CONTRACTOR TO VERIFY WITH OWNER LOCATIONS OF VENTS, DAMPERS, REGISTERS, ETC.
 - FLEXIBLE DUCTWORK LENGTH NOT TO EXCEED 12'-0". SUPPORT FLEX DUCT TO PREVENT SAGGING.
 - REFER TO REFLECTED CEILING PLAN FOR FINAL GRILLE AND DIFFUSER LOCATIONS AND COORDINATE AS REQUIRED.
 - FINAL LOCATION OF TEMPERATURE CONTROLS TO BE COORDINATED WITH OWNER AT JOB SITE.
 - PROVIDE AND INSTALL SMOKE DETECTORS AS APPROVED BY LOCAL AHJ. PLACE NEAR R/A AND S/A OPENINGS OF AHU AND PROVIDE, WITH ACCESS PANEL, WIRING BY ELECTRICAL CONTRACTOR.
 - FRESH AIR INTAKES ARE REQUIRED TO HAVE MOTORIZED OR GRAVITY DAMPERS TO SHUT OFF WHEN SYSTEM IS NOT RUNNING.
 - PROVIDE BIRD SCREENS AT ALL EXTERIOR MECHANICAL PENETRATIONS.
 - COORDINATE WALL MOUNTED THERMOSTAT LOCATIONS WITH ALL OWNER FURNISHED ITEMS EITHER HALL MOUNTED OR FLOOR MOUNTED AGAINST PARTITIONS. REFER TO ARCHITECTURAL DRAWINGS.
 - PROVIDE MIN 18 GA GALVANIZED SHEET METAL TO BLANK-OFF GABLE VENTS WHERE INTAKE/EXHAUST DUCTS OCCUR.



- ### HVAC CONSTRUCTION NOTES
- VERIFY HVAC CONTROLS AND COMPONENTS ARE COMPLETE AND FUNCTIONAL.
 - REPLACE VVT #5 VAV BOX (REFERENCE SCHEDULE)
 - RELOCATE/REPLACE DIFFUSERS AS NOTED (REFERENCE SCHEDULE)
 - MODIFY DUCTWORK AS NOTED.
 - REPLACE RTU-1 (REFERENCE SCHEDULE)
 - BALANCE AIRFLOWS AS NEEDED.
 - REUSE EXISTING GAS METER SUPPLY TO RTU-1



MECHANICAL PLAN
SCALE: 3/16"=1'-0"

DAMMON

ENGINEERING, INC.
 LOUISIANA & MISSISSIPPI
 Chief Engineer: Brian Mistrich, PE
 554 Old Spanish Trail
 Slidell, LA 70458
 www.dammonengineering.com
 info@dammonengineering.com
 PH: 985.649.5832

DATE	REVISIONS	#	DESCRIPTION

SEAL:

NEW DAYCARE
THREE PEAS IN A POD EARLY
LEARNING CENTER
 2066 GAUSE BLVD.
 SLIDELL, LA 70461
 JOB No: 2517
 DATE: 12-01-2025
 DRAWN BY: LJP
 CHECKED BY: CJK

SHEET TITLE:
 MECHANICAL PLAN
 DRAWING NUMBER:
M101
 SHEET No: 10 of 13