



PH: (504) 885-7138  
 20175  
 NEW ORLEANS, LOUISIANA  
**T. BYRON SMITH ARCHITECTS LTD.**

PROJECT: PROPOSED BLOCKBUSTER VIDEO  
 88  
 MILITARY ROAD  
 SUDELT, LOUISIANA

DATE: 07-03-98  
 DRAWN BY: W  
 CHECKED BY: W  
 PROJECT NO.: 000-98-78  
 SHEET NO.: 1  
 TOTAL SHEETS: 1

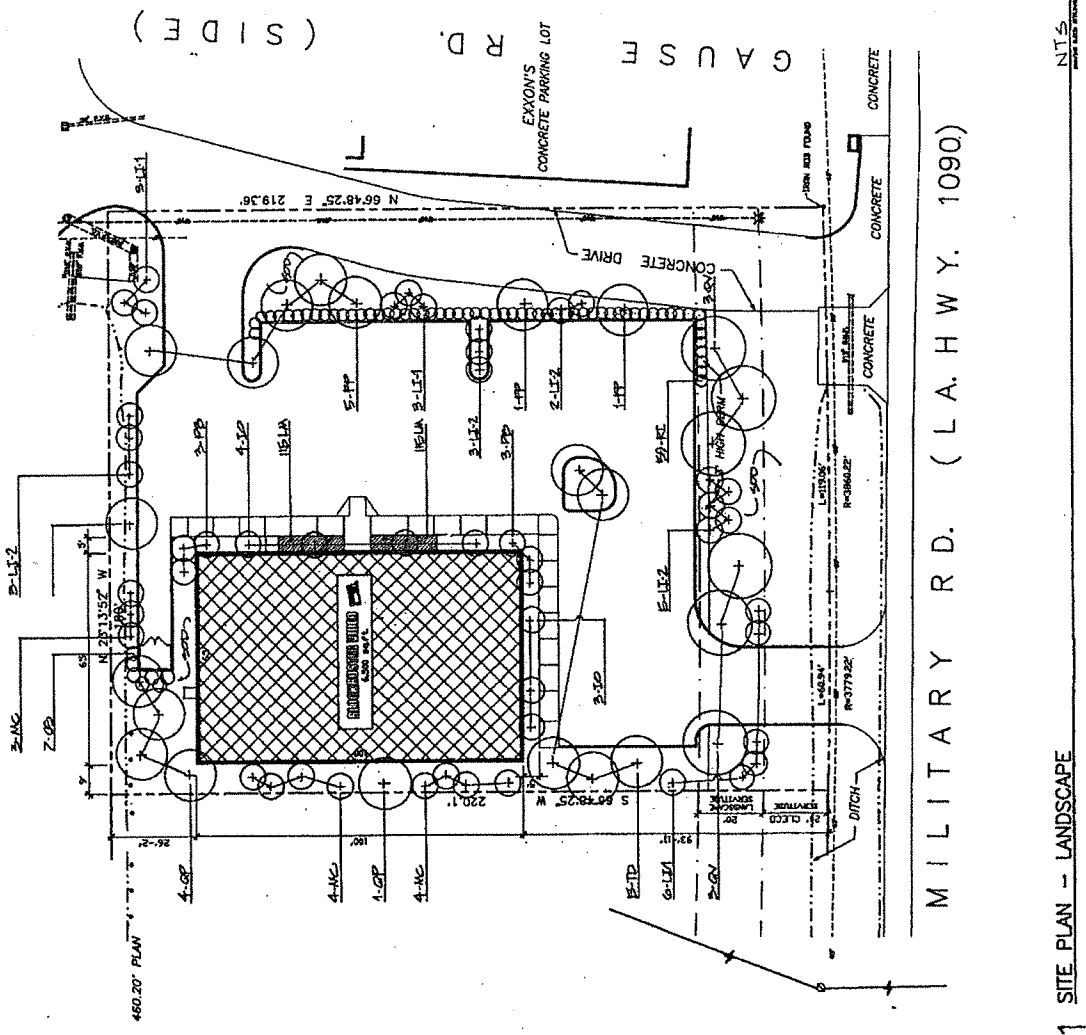
LD-1

**PLANT MATERIAL LIST**

REF. #	SYMBOL	COMMON NAME	SPEC.
1	1-1	FLORIDA SPRAWL	1 GAL/AN
2	2-1	FLORIDA SPRAWL	2 GAL/AN
3	3-1	FLORIDA SPRAWL	3 GAL/AN
4	4-1	FLORIDA SPRAWL	4 GAL/AN
5	5-1	FLORIDA SPRAWL	5 GAL/AN
6	6-1	FLORIDA SPRAWL	6 GAL/AN
7	7-1	FLORIDA SPRAWL	7 GAL/AN
8	8-1	FLORIDA SPRAWL	8 GAL/AN
9	9-1	FLORIDA SPRAWL	9 GAL/AN
10	10-1	FLORIDA SPRAWL	10 GAL/AN
11	11-1	FLORIDA SPRAWL	11 GAL/AN
12	12-1	FLORIDA SPRAWL	12 GAL/AN
13	13-1	FLORIDA SPRAWL	13 GAL/AN
14	14-1	FLORIDA SPRAWL	14 GAL/AN
15	15-1	FLORIDA SPRAWL	15 GAL/AN
16	16-1	FLORIDA SPRAWL	16 GAL/AN
17	17-1	FLORIDA SPRAWL	17 GAL/AN
18	18-1	FLORIDA SPRAWL	18 GAL/AN
19	19-1	FLORIDA SPRAWL	19 GAL/AN
20	20-1	FLORIDA SPRAWL	20 GAL/AN
21	21-1	FLORIDA SPRAWL	21 GAL/AN
22	22-1	FLORIDA SPRAWL	22 GAL/AN
23	23-1	FLORIDA SPRAWL	23 GAL/AN
24	24-1	FLORIDA SPRAWL	24 GAL/AN
25	25-1	FLORIDA SPRAWL	25 GAL/AN
26	26-1	FLORIDA SPRAWL	26 GAL/AN
27	27-1	FLORIDA SPRAWL	27 GAL/AN
28	28-1	FLORIDA SPRAWL	28 GAL/AN
29	29-1	FLORIDA SPRAWL	29 GAL/AN
30	30-1	FLORIDA SPRAWL	30 GAL/AN
31	31-1	FLORIDA SPRAWL	31 GAL/AN
32	32-1	FLORIDA SPRAWL	32 GAL/AN
33	33-1	FLORIDA SPRAWL	33 GAL/AN
34	34-1	FLORIDA SPRAWL	34 GAL/AN
35	35-1	FLORIDA SPRAWL	35 GAL/AN
36	36-1	FLORIDA SPRAWL	36 GAL/AN
37	37-1	FLORIDA SPRAWL	37 GAL/AN
38	38-1	FLORIDA SPRAWL	38 GAL/AN
39	39-1	FLORIDA SPRAWL	39 GAL/AN
40	40-1	FLORIDA SPRAWL	40 GAL/AN
41	41-1	FLORIDA SPRAWL	41 GAL/AN
42	42-1	FLORIDA SPRAWL	42 GAL/AN
43	43-1	FLORIDA SPRAWL	43 GAL/AN
44	44-1	FLORIDA SPRAWL	44 GAL/AN
45	45-1	FLORIDA SPRAWL	45 GAL/AN
46	46-1	FLORIDA SPRAWL	46 GAL/AN
47	47-1	FLORIDA SPRAWL	47 GAL/AN
48	48-1	FLORIDA SPRAWL	48 GAL/AN
49	49-1	FLORIDA SPRAWL	49 GAL/AN
50	50-1	FLORIDA SPRAWL	50 GAL/AN

**MAINTENANCE NOTE**  
 BLOCKBUSTER VIDEO STORES SHALL ASSUME RESPONSIBILITY FOR  
 MAINTENANCE OF ALL PLANT MATERIALS. THE CLIENT SHALL BE  
 RESPONSIBLE FOR THE REPLACEMENT OF PLANTS AND REPAIRS OF  
 DAMAGED PLANTS, AND REPLACEMENT OF DAMAGED OR DEAD PLANT  
 MATERIALS.

**LARSON / RODRIGUEZ LIMITED**  
 2601 Armys  
 P.O. BOX 1000, SUITE 100, NEW ORLEANS, LA 70114



1 SITE PLAN - LANDSCAPE

NTS