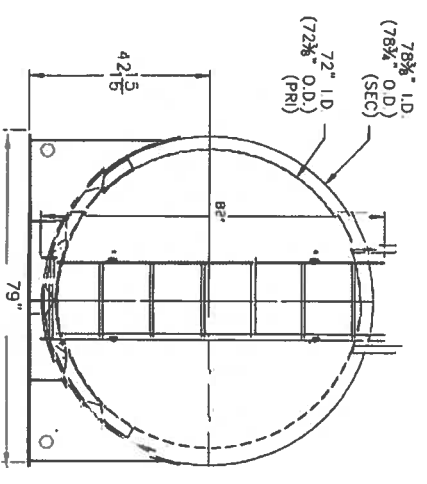
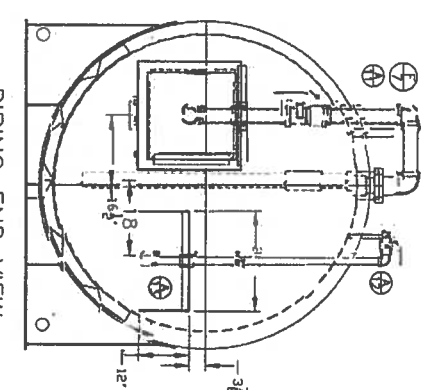


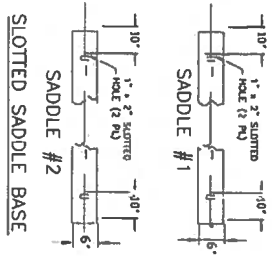
SIDE ELEVATION



LADDER END VIEW



PIPING END VIEW



BILL OF MATERIALS

MARK QTY	DESCRIPTION
<b>PRIMARY HEADS &amp; SHELLS</b>	
2	8" X 75" CIRCLES (HEADS)
4	7 GA SHEETS 72" WIDE X 227" LG
<b>SECONDARY HEADS &amp; SHELLS</b>	
2	8" X 87" CIRCLES
5	7 GA SHEETS 60" WIDE X 247" LG
<b>FITTINGS</b>	
<b>MARK QTY DESCRIPTION</b>	
1	8" TO E NIPPLE W/ 8" E VENT Box CABQ 0366-03-60HF (PRI)
1	8" TO E NIPPLE W/ 8" E VENT Box CABQ 0366-03-60HF (SEC)
5	2" X 9" TO E NIPPLES WILL HAVE WELD SEAM
2	4" X 9" TO E NIPPLES WILL HAVE WELD SEAM
2	4" FNPT TANK FLANGES W/ PLUG (PERLUITE VENTS)
1	2" FNPT TANK FLANGES W/ STEEL CAP SEAL WELDED
2	8" X 9" TO E NIPPLES WILL HAVE WELD SEAM
<b>ATTACHMENTS</b>	
<b>MARK QTY DESCRIPTION</b>	
1	2" SCH 40 PIPE 76X LG W/ 2" FULL COUP (MONITOR WELL)
2	UL SADDLES (REF DWG TG-78-1 FOR CONSTRUCTION)
4	FRIGIARD LFT LUG 10" X 16" X 3"
2	SPACERS ~SEE DETAIL~
2	WEARPAD 3/4" X 9K" WIDE X 111" LONG
96	ESTIMATED BAGS OF PERIUTE
1	18" S.P. BOLTED MANWAY W/ FIBERFLEX GASKET
1	1/8" THICK COVER & 1/2" THICK FLANGE
1	1/8" THICK GRADE 5 ZINC BOLTS
1	1/8" THICK GRADE 5 ZINC NUTS
1	KRUEGER LEVEL GAUGE
1	KRUEGER LEAK GAUGE
1	2" PRESS/VAC W/ ALARM, NPT-F VENT
1	3" FLL PIG WITH HRC SPILL BOX
1	1.5" SUCTION PIPING
1	HEAD-MOUNTED PLATFORM 12" DEEP X 15" WIDE

MARK QTY	DESCRIPTION
<b>LADDER</b>	
2	2" X 3/8" F.B 82" LG (SIDE RAILS)
8	2" X 3/8" F.B 6" LG (LADDER CLIPS) ~SEE DETAIL~
7	3/4" H.R. BAR 18" LG (LADDER RUNGS)
4	1/2" X 1/2" LG BOLTS W/ WASHERS AND NUTS

PRIMARY: 270,520 CFH  
 SECONDARY: 292,320 CFH  
 EST WT = 20,000 LB

**HALL TANK COMPANY**  
 NORTH LITTLE ROCK, ARKANSAS  
 ENGINEERED PRODUCTS PHONE: (501) 946-3811

DESIGNED BY: ABILLIOTT DATE: 8/29/24 DRAWN BY: DATE: LA/7/C  
 TITLE: 5,000 GALLON HORIZONTAL FIREGUARD  
 AST: #72 X 288.25" LG (PRI)  
 BIRDEWALD MAINTENANCE  
 MANDREVILLE, LA  
 SCALE: NTS 1/4" = 1' 1/4" = 1'  
 DRAWING NUMBER: 31649-1-1 THRU  
 31649-1-2

CONTENTS OF TANK

**DIESEL**

APPROVAL DRAWING

NOT FOR FABRICATION

- APPROVED AS SUBMITTED
- APPROVED AS MARKED
- CHANGE AND RE-SUBMIT FOR APPROVAL

SIGNATURE: *[Signature]*  
 DATE: 9/26/25

AS INDICATED ABOVE, THE BUYER APPROVES THE PRODUCT DESIGN PRESENTED IN THIS DRAWING AND AGREES TO THE TERMS AND CONDITIONS OF THE SALES ORDER PROVIDED FOR THIS PRODUCT.