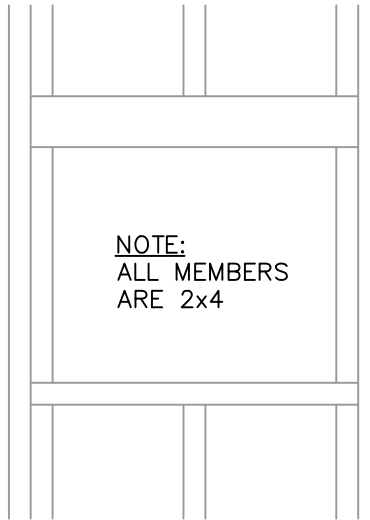
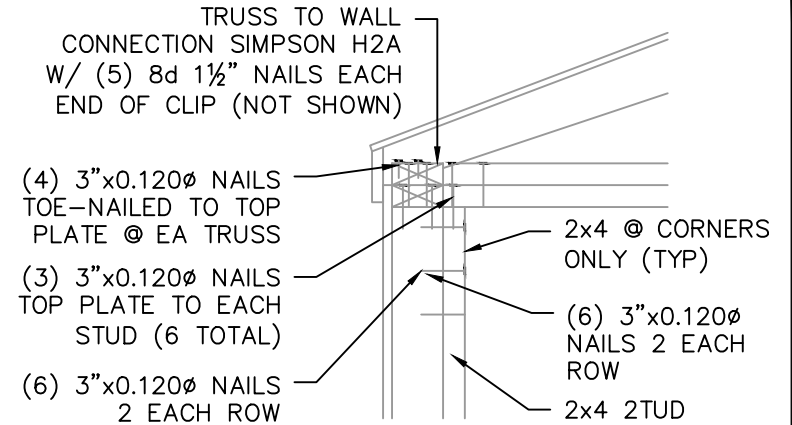


1-CORNER DETAIL

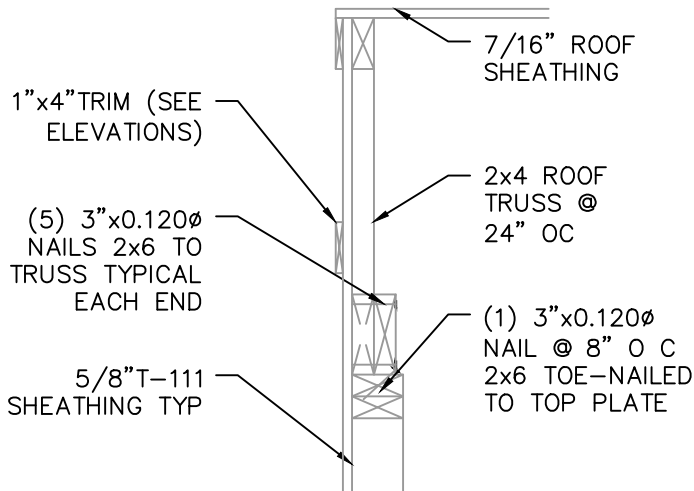


2-TYP WINDOW FRAMING

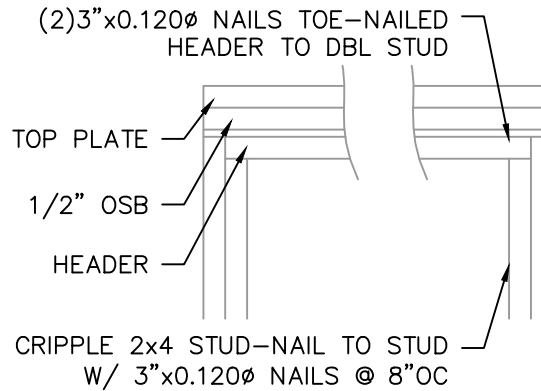


NOTE: INSTALL H2 5A PER MANUFACTURES RECOMMENDATIONS

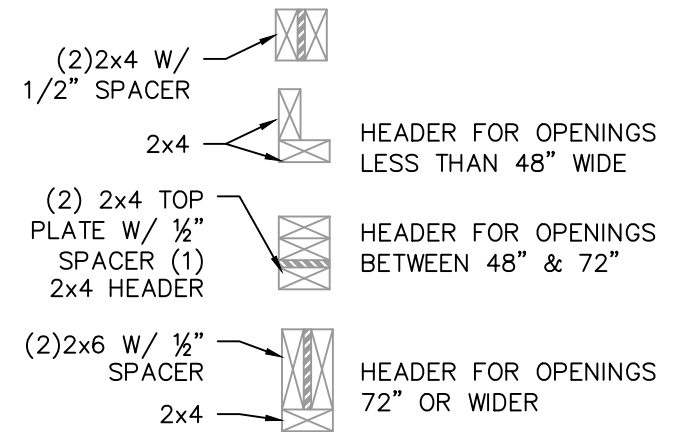
3-CORNER & WALL DETAIL



4-END WALL DETAIL



5-TYP DOOR FRAMING



NOTE: FOR 12' HIGH OR GREATER SIDEWALLS, A 48" MAX OPENING IS ALLOWED



**DANIEL'S PORTABLE BUILDINGS, LLC.**

601-551-0469

DRAWN BY: TNT    SCALE: NTS    DATE: 04-13-2022

SHEET TITLE: BUILD DETAIL 1

DRAWING NUMBER:

**S-109**



**DAMMON ENGINEERING, INC.**

554 Old Spanish Trail Slidell, LA 70458 (985) 649-5832

Chief Engineer: Brian Mistich, PE  
554 Old Spanish Trail  
Slidell, LA 70458

www.dammonengineering.com  
info@dammonengineering.com  
PHONE: 985-649-5832