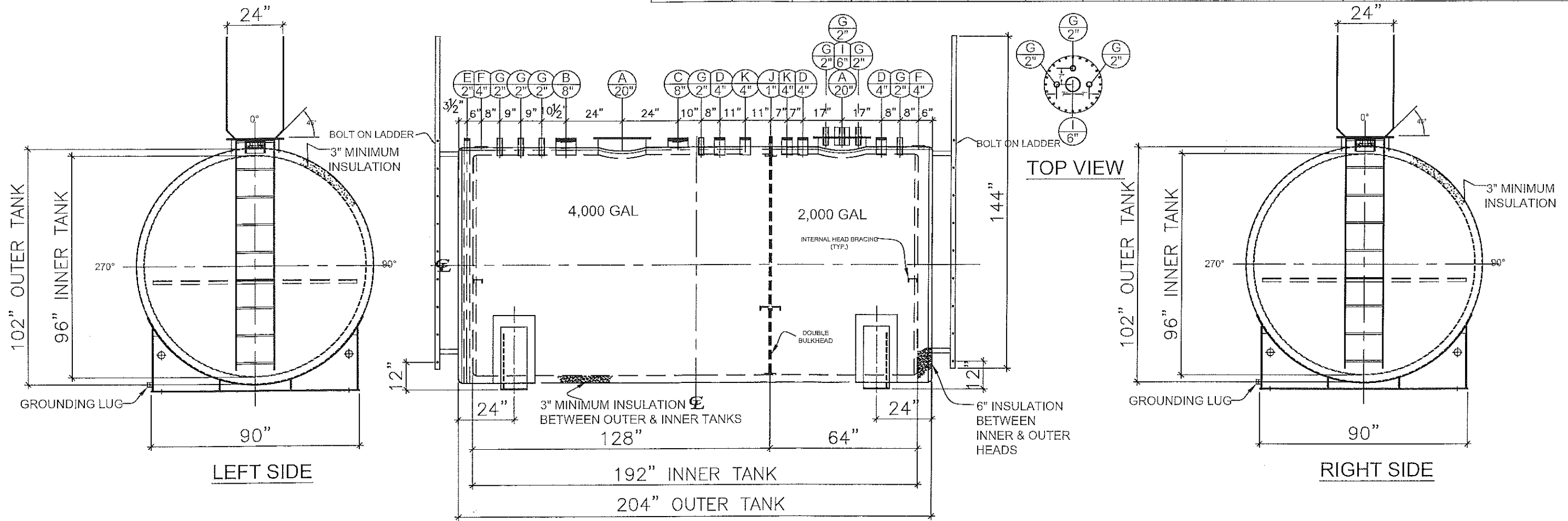


**NOZZLE SCHEDULE**

ITEM	SIZE	RATING	TYPE	MATL.	PROJ. IN	PROJ. OUT	REMARKS	NOTES
A	20"	U.L.	M.W.	C.S.	STD.	STD.	SINGLE PUNCHED	TIGHT BOLTED
B	8"	N.P.T.	CPL.	C.S.	STD.	STD.	PRIMARY	EMERGENCY VENT OPENING
C	8"	N.P.T.	H.CPL.	C.S.	STD.	STD.	SECONDARY	EMERGENCY VENT OPENING
D	4"	N.P.T.	CPL.	C.S.	STD.	STD.	-	-
E	2"	N.P.T.	PIPE	C.S.	STD.	STD.	-	MONITORING PORT
F	4"	N.P.T.	W.F.	C.S.	STD.	STD.	-	INTERSTICE FILL
G	2"	N.P.T.	CPL.	C.S.	STD.	STD.	-	-
H	6"	N.P.T.	CPL.	C.S.	STD.	STD.	-	-
I	6"	N.P.T.	CPL.	C.S.	STD.	STD.	PRIMARY	EMERGENCY VENT OPENING
J	1"	N.P.T.	CPL.	C.S.	STD.	STD.	-	BULKHEAD TEST PORT
K	4"	N.P.T.	TOE	C.S.	STD.	STD.	PRIMARY	4" TOE NIPPLE



**NOTES:**

- A. B. Material: H.R. Carbon Steel.
- C. Design Pressure: Atmospheric.
- D. Design Temperature: Ambient.
- E. Built & labeled per U.L. #142, #2085 & STI Fireguard Specifications.
- F. Interstice to be filled w/ 3" min. thermal insulation per Fireguard specs.
- G. Exterior: Blast & apply one shop coat WHITE enamel.
- H. All fittings to be labeled and protected for shipment.
- I. Customer to verify nozzle sizes, locations and quantities.
- J. Saddles/skids may require shimming or grouting during installation.

\*All pages of this Schedule A are incorporated by reference and are a part of the additional terms of the Master Terms & Conditions of Sale.  
www.newberrytanks.com/masterterms.pdf

APPROVAL FOR CONSTRUCTION  
SCHEDULE A - MASTER TERMS &  
CONDITIONS OF SALE\*

APPROVED AS DRAWN.  
 APPROVED WITH NOTED CHANGES,  
CONSTRUCTION WILL BE SCHEDULED  
WHEN SIGNED DRAWING AND  
CONFIRMED ORDER ARE RECEIVED.  
SIGNATURE *Calvin Moorman*

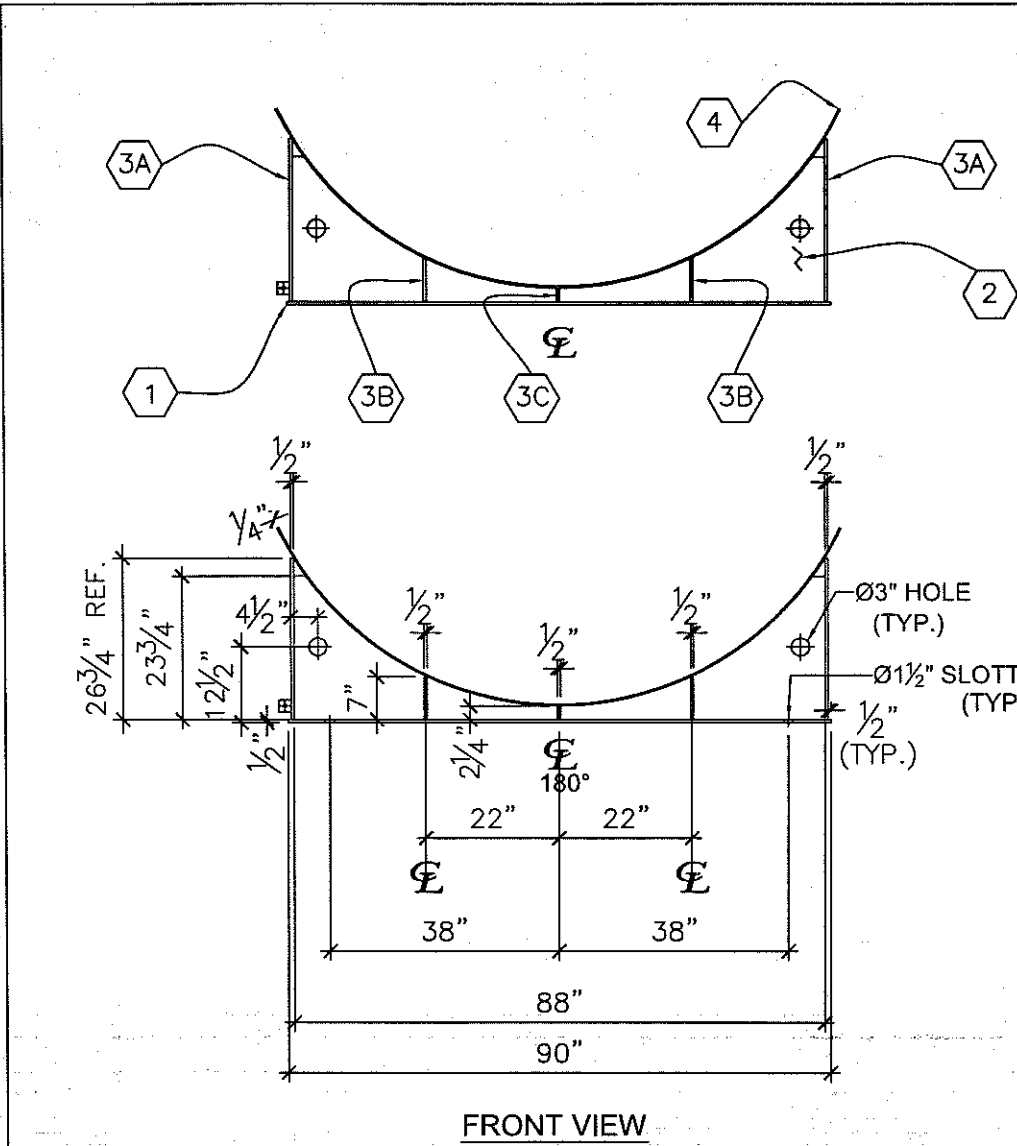
SALES ORDER# 25348



Phone: 870-735-4473 Fax: 870-735-3982

VESSEL DESCRIPTION:  
6000 Gallon 96" I.D. x 16'-0" O.A.L. Fireguard Saddle Tank  
Split 4,000//2,000 w/ Double Bulkhead

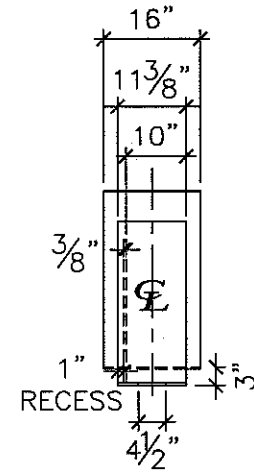
CUSTOMER: JF PETROLEUM		P.O.#	
DATE: 8/22/24	SCALE:	DWG.# NB06000FGD096250	DRAWN BY: TC/AJC CHKD. BY: CR




FRONT VIEW

MARK	NB#	QTY	MATERIAL	DIMENSION	DESCRIPTION
①	SA096FG-1	1	A-36	1/2" x 11 3/8" x 90"	Base Plate
②	SA096FG-2	2	A-36	3/8" x 23 3/4" x 44"	Web Plate
③A	SA096FG-3A	2	A-36	1/2" x 11 3/8" x 30"	Outside Stiffener
③B	SA096FG-3B	2	A-36	1/2" x 7" x 10"	Inside Large Stiffener
③C	SA096FG-3C	1	A-36	1/2" x 2 1/4" x 10"	Inside Small Stiffener
④	SA096FG-4	1	A-36	1/4" x 16" x 120"	Wear Plate

NOTE:  
SEAL WELD ALL SADDLE PARTS



SIDE VIEW

SALES ORDER#			
 Phone: 870-735-4473 Fax: 870-735-3982			
VESSEL DESCRIPTION: Ø96" Fireguard Tank Saddle			
CUSTOMER:		P.O.#	
DATE: 4/2/13	SCALE:	DWG.# SA096FG-SADDLE	DRAWN BY: TC CHKD. BY:

This drawing may contain PRIVILEGED and CONFIDENTIAL information and is intended only for the use of the specific individual(s) to which it is addressed.

Newberry Tanks & Equipment, LLC 205 North Walker West Memphis, AR. 72301 870-735-4473 www.newberrytanks.com