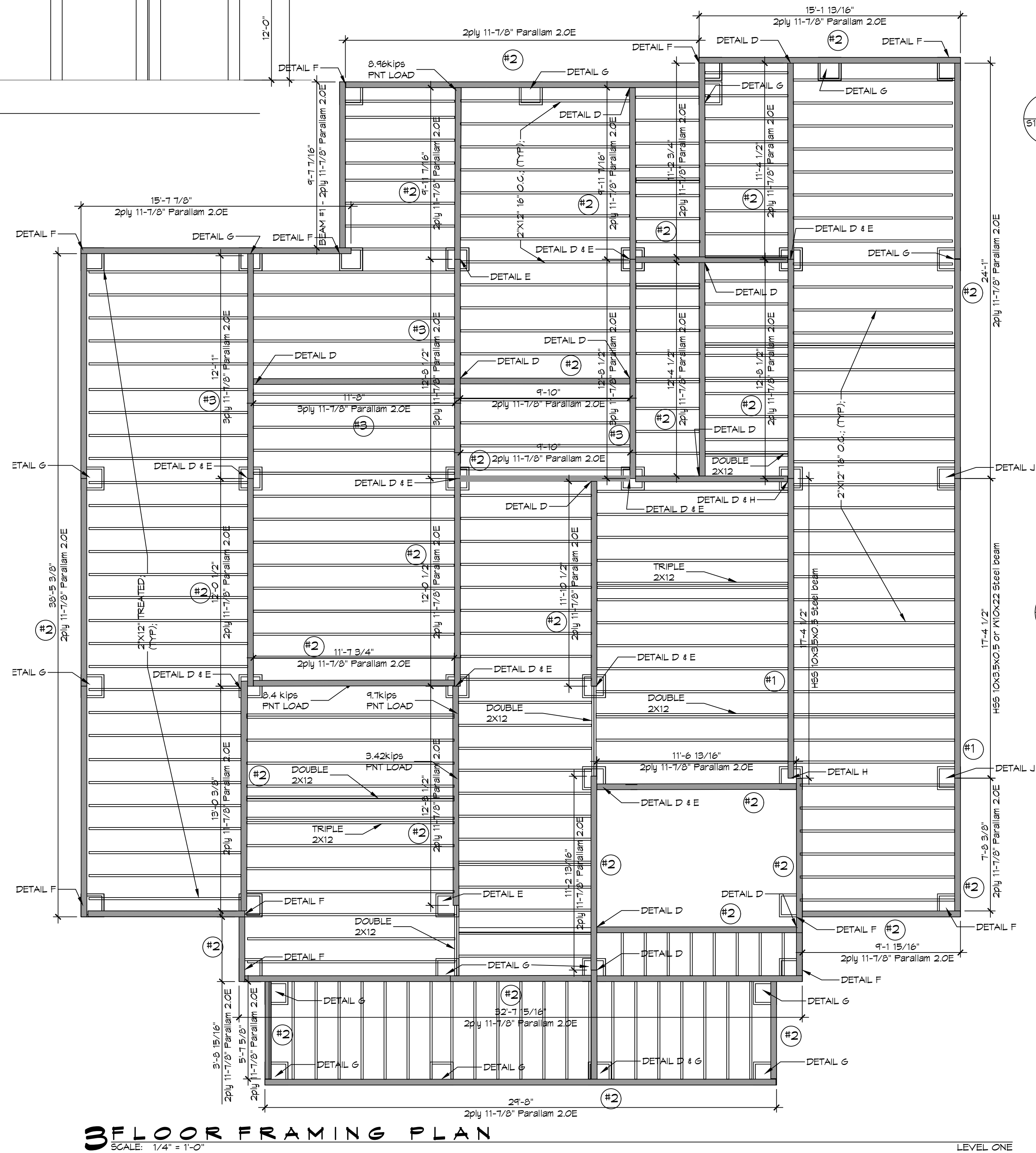


02-2025 - All Foundations of Residential Buildings, including Retention Structures, shall be designed in accordance with the Louisiana Building Code, Chapter 11, Part 1103, and the International Building Code, Chapter 18, Part 1805.1.



FINISH FLOOR ELEVATION 21.9'  
 LOWEST HORIZ MEMBER ELEV. 19.5'  
 ALLOWED LOWEST MEMBER ELEV. 18.0'  
 BASE FLOOD ELEVATION 16.0'

**BUILDING HEIGHT**  
 SCALE: 1/8" = 1'-0"

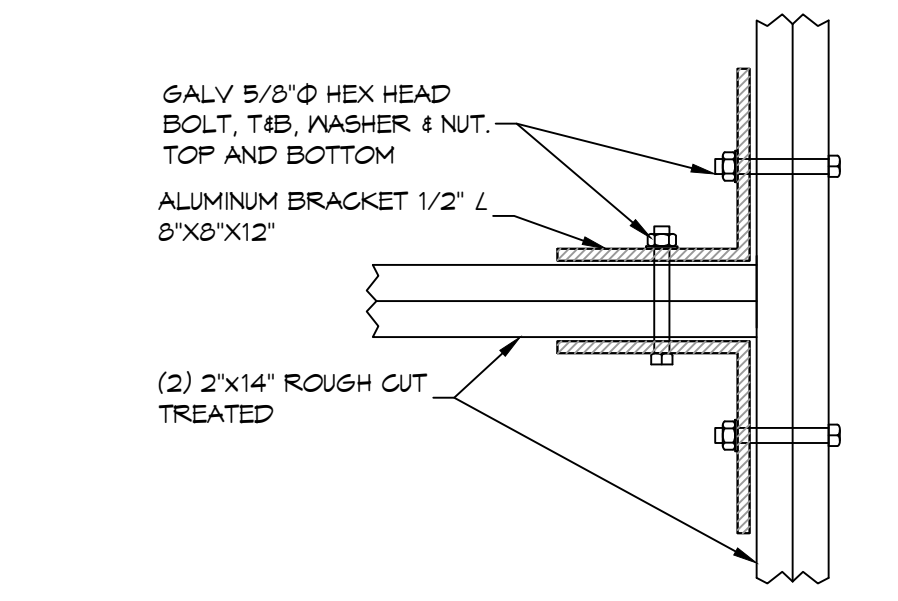


**3 FLOOR FRAMING PLAN**  
 SCALE: 1/4" = 1'-0"

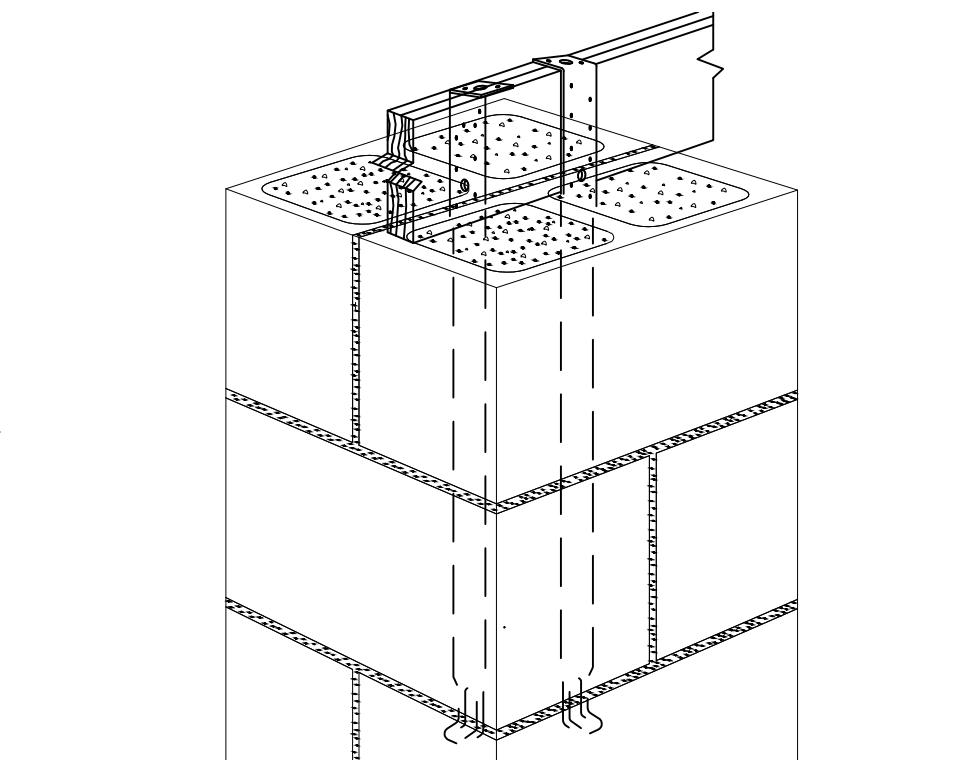
**DESIGN CRITERIA**  
 THE CONSTRUCTION FOR SAID RESIDENCE, WHERE BASIC WIND SPEED IS 150 MILES PER HOUR, WIND EXPOSURE ZONE D, IS DESIGNED IN ACCORDANCE WITH: AMERICAN FOREST AND PAPER ASSOCIATION (AF&PA) WOOD FRAME CONSTRUCTION MANUAL FOR ONE AND TWO FAMILY DWELLINGS (WFCM) 2001 EDITION AS WELL AS THE INTERNATIONAL RESIDENTIAL CODE (IRC) 2021 EDITION.  
 NOTE: NAMING A CERTAIN BRAND, MAKE OR MANUFACTURER IS TO DESIGNATE THE GENERAL STYLE, TYPE, CHARACTER AND QUALITY STANDARD OF THE PRODUCT DESIRED.

**GENERAL NOTES**  
 1. ALL LUMBER SHALL BE PRESSURE TREATED WITH A RETENTION OF .4 PER C.F.  
 2. ALL FASTENERS SHALL BE HOT DIPPED GALVANIZED (HDG) PER ASTM A153.  
 3. ALL CONNECTORS SHALL BE HDG PER ASTM A653, CLASS G105 SHEET WITH 1.25 OZ/SF ZINC COATING.  
 4. DOUBLE UP AND TRIPPLE UP ON FLOOR JOISTS UNDER ALL LOAD BEARING WALLS AND BATHTUBS.

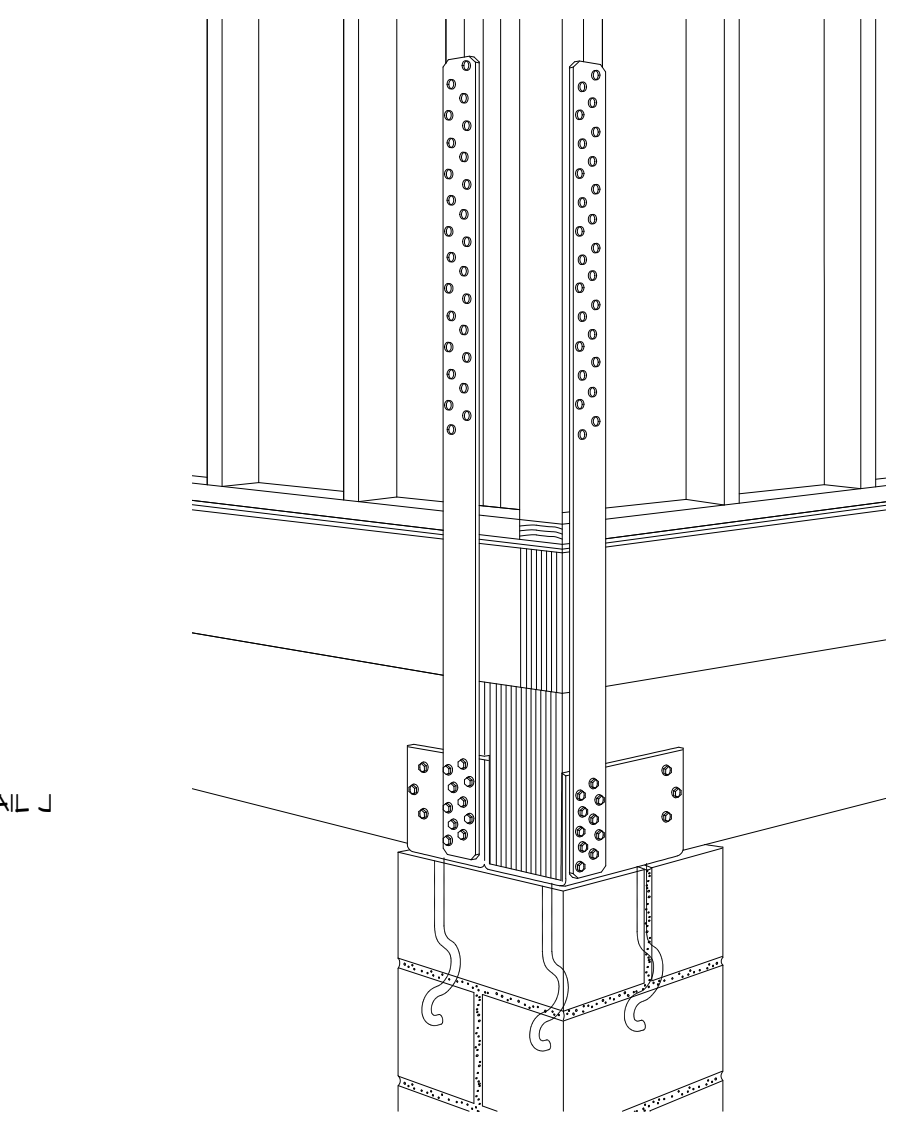
**BEAMS**  
 THIS IS THE TOTAL NUMBER OF BEAMS FOR THE ENTIRE PROJECT. SEE PLANS FOR LENGTHS  
 #1 - STEEL BEAM HSS 10x3.5x0.5 or W10x22 Steel beam = 5ea  
 #2 - 2ply 11-7/8" Parallam 2.OE = 29ea  
 #3 - 3ply 11-7/8" Parallam 2.OE = 4ea



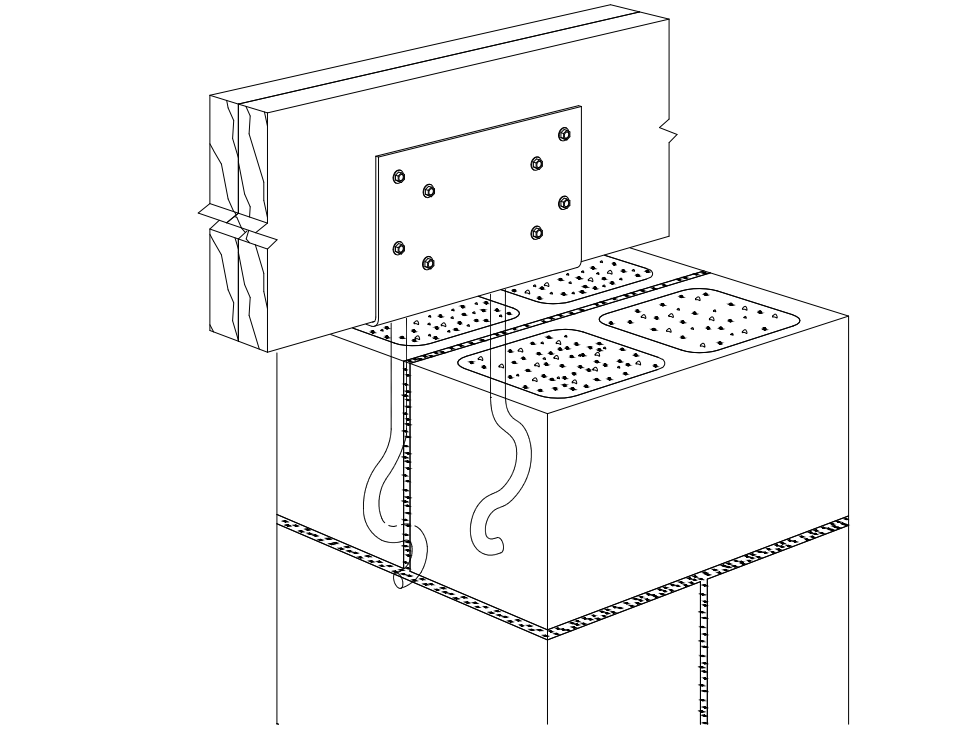
**D DETAIL**  
 SCALE: 1-1/2" = 1'-0" CONNECTION BRACKET WOOD BEAMS



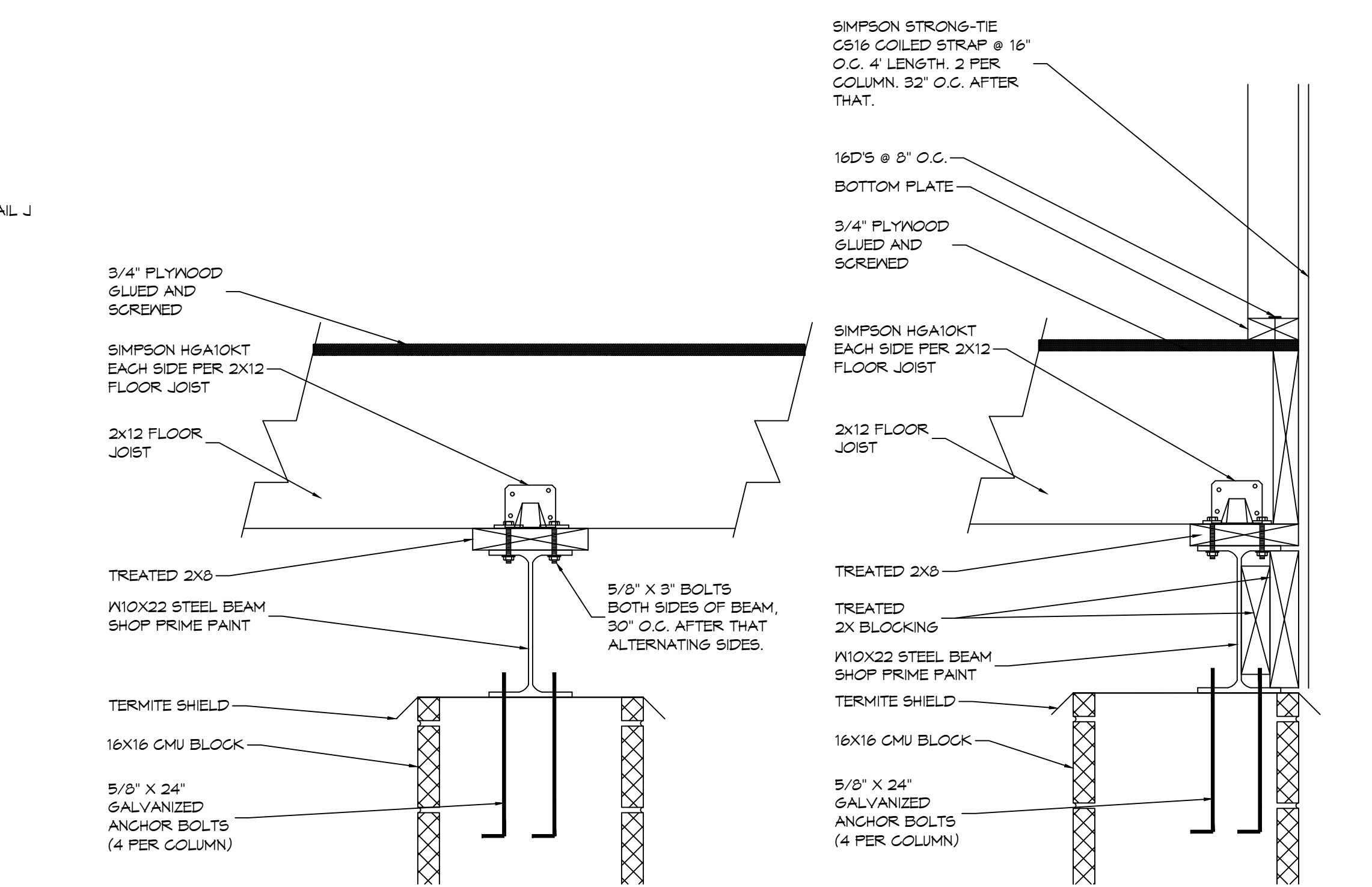
**E SIMPSON FAB1**  
 SCALE: N.T.S. TWO @ INTERIOR COLUMNS ONLY



**F SIMPSON ECCLQM**  
 SCALE: N.T.S. AT EACH EXTERIOR CORNERS



**G SIMPSON CCQM**  
 SCALE: N.T.S. EXTERIOR ONLY



**H STEEL BEAM CONNECTION**  
 SCALE: SCALE 1-1/2" = 1'-0"

**J STEEL BEAM CONNECTION**  
 SCALE: SCALE 1-1/2" = 1'-0"

**DAMMON ENGINEERING, INC.**  
 LOUISIANA & MISSISSIPPI  
 www.dammonengineering.com  
 info@dammoneng.com  
 Phone: 985.449.5832

NO.	DATE	DESCRIPTION



**J B A D E A N D Y**  
 218 MARLIN DRIVE  
 SUDELL, LA. 70461  
 JOB No: 06-20-2025  
 DRAWN BY: BAY  
 CHECKED BY: CSD  
 SHEET TITLE: FLOOR FRAMING PLAN LEVEL ONE  
 DRAWING NUMBER: **S103**  
 SHEET No: 3 of 7