

- ONE LINE NOTES:**
- 36" LONG SNEEP ELBOW
 - PROVIDE TWO (2) 3" SCHEDULE 40 PVC CONDUIT BELOW GRADE AND SCH 80 PVC CONDUIT ABOVE GRADE WITH SUITABLE FISH WIRE.
 - 120/240V 1Ø 200amp METER PAN.
 - 3 #4 THHN, 1 #2 GND, 2-1/2" C
 - 120/240V 1Ø 200A PANELBOARD WITH MAIN BREAKER.
 - 2-3/4" x 10' CU CLAD GND ROD, #1/0 CU GND WIRE. PROTECT IN PVC PIPE. CONNECT TO METAL BLDG, COLD WATER SUPPLY & GAS LINE. CAD WELD ALL CONNECTIONS.

RISER DIAGRAM
SCALE: NTS

PANEL SCHEDULE													
PANEL LOCATION: EQUIPMENT ROOM		INTERRUPTING RATING: 10 KAIC		VOLTAGE ENCLOSEURE: 240/120V, 200A, 1Ø, 3Ø W MAIN CIRCUIT		BREAKER: FLUSH MOUNTED W/ EQUIPMENT SHD		BAR SQUARE Ø TYPE GDB OR EQUAL		FEEDER SOURCE: UTILITY			
CKT NO	THHN WIRE SIZE	LOAD DESCRIPTION	BREAKER AMP POLE	LOAD (KVA)	AP		BP		LOAD (KVA)	BREAKER AMP POLE	LOAD DESCRIPTION	THHN WIRE SIZE	CKT NO
					Ø	Ø	Ø	Ø					
1	#12	RECEPTACLES CLASSROOM 3	20 1	1000	Ø	Ø	Ø	Ø	800	1 20	LIGHTS, CLASSROOM 3 AND CLOSET	#12	2
3	#12	RECEPTACLES CLASSROOM 3 AND CLOSETS	20 1	1000	Ø	Ø	Ø	Ø	700	1 20	LIGHTS, LOUNGE AND KITCHEN AND UTILITY CLOSET	#12	4
5	#12	RECEPTACLES STUDY	20 1	1000	Ø	Ø	Ø	Ø	1000	1 20	LIGHTS AND EXHAUST FAN (BATHROOMS)	#12	6
7	#12	RECEPTACLE, MICROWAVE	20 1	1800	Ø	Ø	Ø	Ø	800	1 20	LIGHTS AND EXHAUST FAN (GEAR ROOM)	#12	8
9	#12	RECEPTACLE, REFRIGERATOR	20 1	1800	Ø	Ø	Ø	Ø	500	1 20	LIGHTS EXTERIOR	#12	10
11	#12	RECEPTACLES GEAR ROOM AND KITCHEN	20 1	1000	Ø	Ø	Ø	Ø			SPACE	#12	12
13	#12	RECEPTACLES OUTSIDE	20 1	120	Ø	Ø	Ø	Ø			SPACE	#12	14
15	#12	RECEPTACLE FOR WATER COOLER	20 1	900	Ø	Ø	Ø	Ø			SPACE	#12	16
17	#12	RECEPTACLES, BATHROOMS	20 1	900	Ø	Ø	Ø	Ø			SPACE	#12	18
19	#12	RECEPT. TV, CLASSROOM 3	20 1	900	Ø	Ø	Ø	Ø			SPACE	#12	20
21		SPARE	20 1		Ø	Ø	Ø	Ø			SPACE	#12	22
23	#12	RECEPT. TV, STUDY	20 1	900	Ø	Ø	Ø	Ø			SPACE	#12	24
25		SPARE	20 1		Ø	Ø	Ø	Ø			SPACE	#12	26
27		SPARE	20 1		Ø	Ø	Ø	Ø			SPACE	#12	28
29		SPARE	20 1		Ø	Ø	Ø	Ø			SPACE	#12	30
31	#10	WATER HEATER	50 2	2800	Ø	Ø	Ø	Ø			SPACE	#10	32
33	#10	AHU-1	25 2	1450	Ø	Ø	Ø	Ø	4000	2 45	HEAT PUMP-1	#10	33
35	#10	AHU-2	25 2	1450	Ø	Ø	Ø	Ø	4000	2 50	HEAT PUMP-2	#10	34
37					Ø	Ø	Ø	Ø					
39					Ø	Ø	Ø	Ø					
41					Ø	Ø	Ø	Ø					
				TOTAL CONNECTED LOAD (KVA) = 42,250									
				AP = 21,240		BP = 20,760							
				SOLID NEUTRAL NEUTRAL WIRE (N)						GROUND BUS GROUND WIRE (G)			

ELECTRICAL LOAD SUMMARY

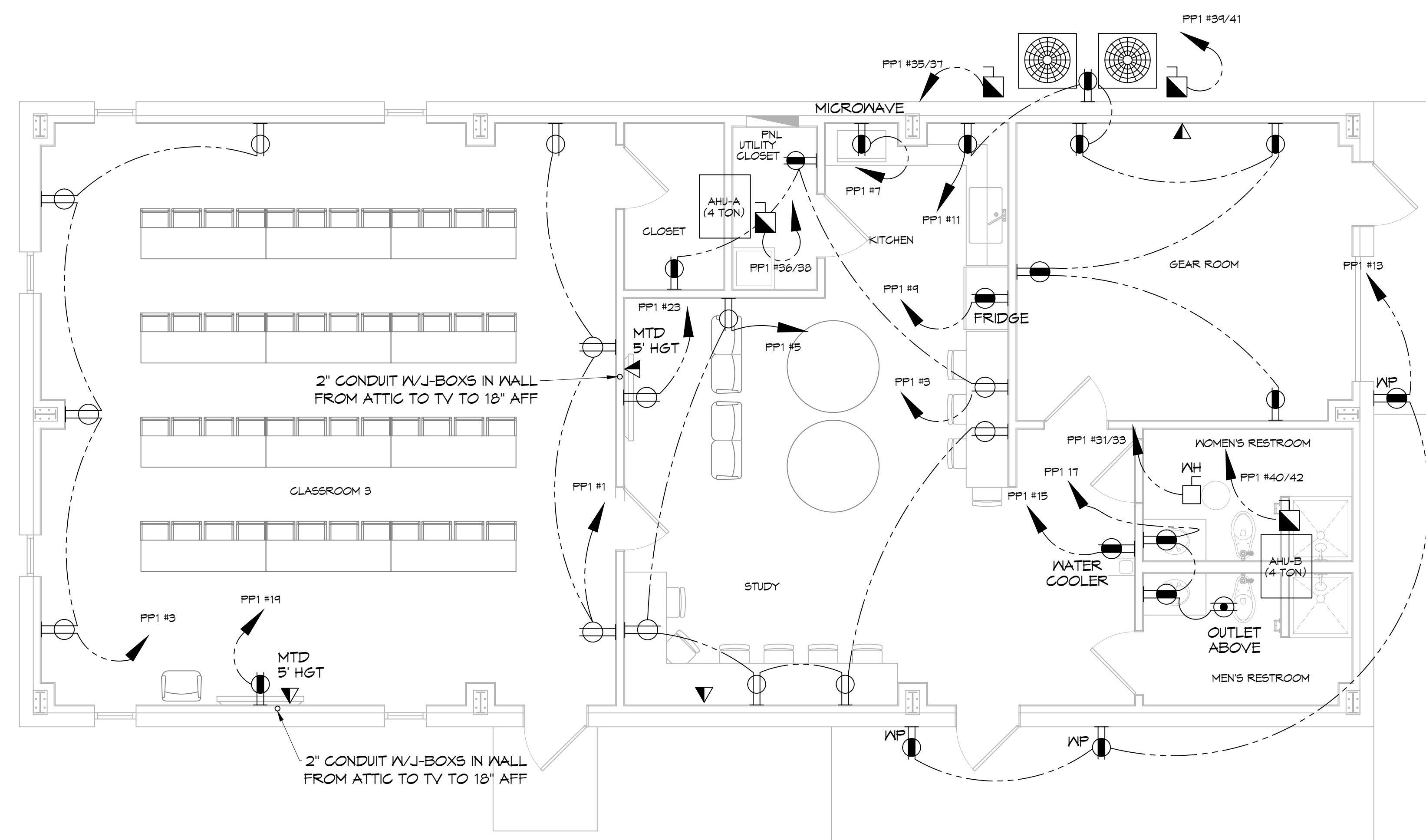
POWER COMPANY:	Cleco			
PROJECT NAME:	NEW TRAINING FACILITY			
PROJECT ADDRESS:	34780 RANGE ROAD			
CITY/TOWN:	SLIDELL, LOUISIANA 70460			
INTENDED USER:	ST. TAMMANY FIRE TRAINING			
REQUIRED SERVICE:	240/120 VOLTS 1 PHASE 3 WIRE			
SERV ENTR SIZE:	200 AMPS			
HVAC TONNAGE:	1.5 TONS			
LARGEST MOTOR:	HP			
NOTE: MOTORS ABOVE 20 HP MAY REQUIRE REDUCED VOLTAGE STARTING AND ARE NEVER RECOMMENDED FOR USE WITH 240/120V, 1 PH, 3 W SERVICE				
TOTAL BUILDING SQUARE FOOTAGE:	S.F.			
INDIVIDUAL UNIT SQUARE FOOTAGE:	0 S.F.			
INDIVIDUAL UNIT DESIGNATION:	(MULT OCCUPANCY)			
LOAD SOURCE				
BUILDING LIGHTING	2.1			
ELECTRIC WATER HEATING	5.0			
HEAT PUMPS	18.2			
SUPPLEMENTAL HEAT SYSTEMS	5.8			
AIR COND CONDENSING UNITS				
ELEC HEATING (PRIMARY) AHUS				
COOKING				
REFRIGERATION	1.5			
RECEPTACLES (STANDARD)	7.5			
RECEPTACLES (COMPUTER)				
TOTAL MOTORS (EXCLUDE HVAC)				
EXTERIOR LIGHTING	0.5			
MISCELLANEOUS - CEILING FANS				
OTHER				
TOTAL CONNECTED LOAD	41.2	0.0	0.0	0.0

GENERAL POWER NOTES

- ALL WORK SHALL CONFORM TO THE LATEST EDITION OF THE NATIONAL ELECTRICAL CODE, THE GOVERNING ELECTRICAL CODE AND ALL OTHER INSPECTION DEPARTMENTS HAVING JURISDICTION. OBTAIN CERTIFICATES OR APPROVAL WHERE REQUIRED. ELECTRICAL CONTRACTOR SHALL VERIFY ALL WIRE AND CONDUIT SIZES FOR MECHANICAL EQUIPMENT TO BE INSTALLED.
- ALL MATERIALS FURNISHED SHALL BE NEW AND SHALL BE U.L. LISTED.
- THE DRAWINGS INDICATE SIZE AND GENERAL LOCATION OF WORK. SCALE DIMENSIONS SHALL NOT BE USED. THE EXACT LOCATION OF ALL LIGHTING FIXTURES, RECEPTACLES AND TELEPHONE OUTLETS, ETC, SHALL BE DETERMINED BY ACTUAL CONDITIONS IN THE FIELD.
- PRIOR TO BIDDING, CONTRACTOR SHALL VISIT THE JOB SITE AND FAMILIARIZE THEMSELVES WITH THE EXISTING CONDITIONS.
- ELECTRICAL CONTRACTOR SHALL COORDINATE HIS WORK WITH OTHER TRADES AND WITH OTHER CONTRACTORS WHOSE WORK MAY AFFECT THIS INSTALLATION.
- ELECTRICAL CONTRACTOR SHALL COORDINATE INCOMING ELECTRICAL SERVICE WITH UTILITY COMPANY AND INCLUDE IN HIS BID ALL CHARGES AND FEES INCURRED IN MODIFICATIONS.
- ELECTRICAL CONTRACTOR SHALL COORDINATE THE TELEPHONE INSTALLATION WITH THE TELEPHONE COMPANY AND THE GENERAL CONTRACTOR.
- ELECTRICAL CONTRACTOR, BEFORE INSTALLING ANY OF THE WORK, SHALL SEE THAT IT DOES NOT INTERFERE WITH CLEARANCES REQUIRED FOR FINISHED COLUMNS, HUNG CEILINGS, PLASTER, PARTITIONS, WALLS, ETC, AS SHOWN IN THE ARCHITECTURAL DRAWINGS AND DETAILS. IF ANY WORK IS INSTALLED AND IT LATER DEVELOPS THAT SUCH DETAILS OR DESIGN CANNOT BE FOLLOWED, THE CONTRACTOR, AT HIS OWN EXPENSE, SHALL MAKE SUCH CHANGES IN THE WORK AS DIRECTED BY THE ARCHITECT, AS WELL AS TO PERMIT THE INSTALLATION OF THE ARCHITECTURAL WORK AS SHOWN ON THE PLANS AND DETAILS.
- PERFORM TEST REQUIRED BY THE OWNER OR THE ENGINEER IN CONNECTION WITH THE OPERATION OF THE ELECTRICAL SYSTEM IN THE BUILDING. ALL TESTS SHALL BE MADE IN ACCORDANCE WITH THE LATEST STANDARD OF THE IEEE AND THE NATIONAL ELECTRICAL CODE.
- MINIMUM CONDUCTOR SIZE SHALL BE #12, 600V INSULATION.
- MINIMUM SIZE CONDUIT SHALL BE 3/4" ELECTRICAL METALLIC TUBING (EMT) FOR INTERIOR USE, 3/4" RIGID ALUMINUM FOR EXTERIOR USE ABOVE GRADE AND 1" SCHEDULE 40 PVC, BURIED A MINIMUM OF 18" FOR NON-VEHICULAR TRAFFIC AREAS, AND 3 FT IN VEHICULAR TRAFFIC AREAS. EMT SHALL BE USED WITH METAL STUD CONSTRUCTION AND ALL ASSEMBLY OCCUPANCIES. 6 FT LENGTH MC CABLE IS ALLOWED ABOVE DROPPED CEILING.
- INTERIOR FITTINGS SHALL BE CAST WHERE EXPOSED ON WALLS, AND EXTERIOR FITTINGS SHALL BE CAST BOXES WITH NEMA 3R COVER(S).
- CONTRACTOR SHALL INSTALL WIRING AND OTHER CIRCUIT COMPONENTS TO MATCH EQUIPMENT ACTUALLY INSTALLED.
- ALL 120V RUNS LONGER THAN 60 FEET SHALL BE #10 AWG AND 277V RUNS LONGER THAN 150 FEET SHALL BE #10 AWG UNLESS NOTED OTHERWISE.
- INSTALL GROUND FAULT RECEPTACLES AT RECEPTACLE LOCATIONS WITHIN 5' OF SINKS OR LAVATORIES, AND AT EXTERIOR LOCATIONS. EXTERIOR RECEPTACLES SHALL ALSO BE WATERPROOF. ALL RECEPTACLES IN A KITCHEN AREA SHALL HAVE GROUND FAULT PROTECTION.
- BONDING AND GROUNDING SHALL BE IN ACCORDANCE WITH NFPA 70:250-65, NFPA 250-23, 250-11 & 250-12.
- GROUND NEUTRAL IN ACCORDANCE WITH NFPA 70:250-23b.
- FUSES SHALL BE ITC CLASS K5, 250 VOLT, 200,000 AMP INTERRUPTING CAP.
- PROVIDE SERVICES OF A FIRE/SMOKE DETECTION AND ALARM COMPANY TO DESIGN AND INSTALL ALARM SYSTEM TO MEET REQUIREMENTS OF THE STATE FIRE MARSHALL AND THE FIRE DISTRICT.
- EXTERIOR LIGHTING SHALL BE SHADED OR INWARDLY DIRECTED IN SUCH A MANNER SO THAT NO DIRECT LIGHTING OR GLARE IS CAST BEYOND THE PROPERTY LINE. THE INTENSITY OF SUCH LIGHTING SHALL NOT EXCEED ONE FOOT CANDLE AS MEASURED AT THE ABUTTING PROPERTY LINE.
- ALL ELECTRICAL, MECHANICAL AND PLUMBING PENETRATING FIRE PARTITIONS SHALL BE FIRE CAULKED. (PENETRATIONS THROUGH RAISED CONSTRUCTION SHALL BE SEALED WITH A MATERIAL CAPABLE OF PREVENTING THE PASSAGE OF FLAMES AND HOT GASES WHEN TESTED IN ACCORDANCE WITH ASTM-E814.)
- VERIFY ELECTRICAL CONNECTIONS PER MANUFACTURER'S RECOMMENDATIONS.
- TYPES NM AND NMC CABLES SHALL NOT BE PERMITTED TO BE EXPOSED IN DROPPED OR SUSPENDED CEILING.

POWER LEGEND

- DUPLEX RECEPTACLE - WALL MOUNTED
- GFCI DUPLEX RECEPTACLE - WALL MOUNTED
- WEATHER PROOF GFCI DUPLEX RECEPTACLE - WALL MOUNTED
- DATA OUTLET - WALL MOUNTED
- DISCONNECT SWITCH W/ VIABLE BLADES
- FUSE DISCONNECT SWITCH W/ VIABLE BLADES
- JUNCTION BOX



27 POWER PLAN
SCALE: 1/4"=1'-0"

DAMMON ENGINEERING, INC.
LOUISIANA & MISSISSIPPI

State Engineer: Brian Michot, PE
5540 Cochrane Road, Suite 100
Slidell, LA 70468
www.dammonengineering.com
info@dammon.com
PH: 985.649.5832

REVISIONS	DATE	DESCRIPTION



**NEW TRAINING FACILITY
ST. TAMMANY FIRE PROTECTION
DISTRICT No. 1**

34780 S RANGE ROAD
SLIDELL, LA 70460

JOB No: 2507 DATE: 12-19-2024
DRAWN BY: BAW
CHECKED BY: C&K

SHEET TITLE: POWER PLAN
DRAWING NUMBER: E101

SHEET No: 14 of 15