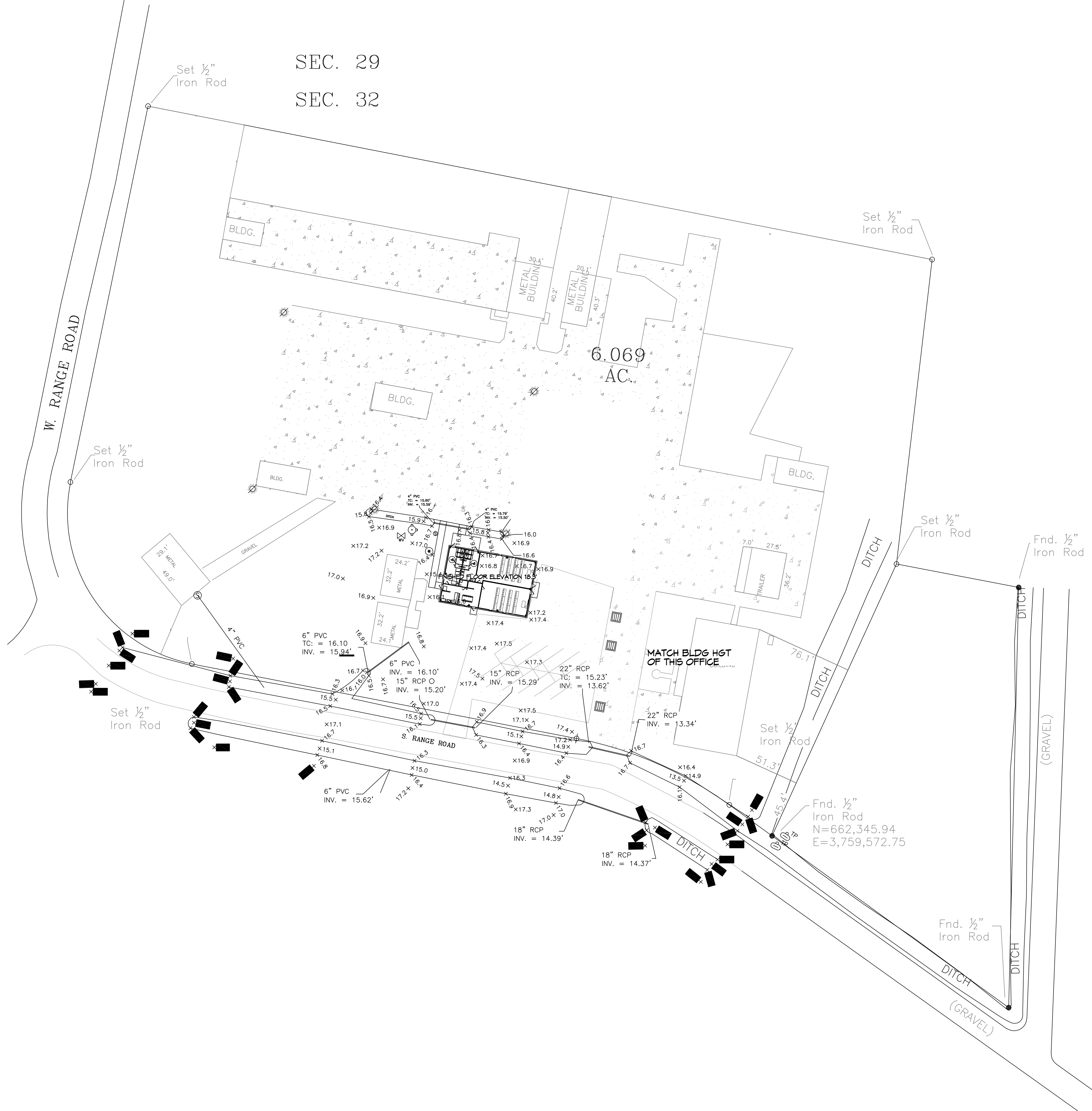


SEC. 29

SEC. 32



Set 1/2" Iron Rod

Set 1/2" Iron Rod

6.069 AC.

W. RANGE ROAD

Set 1/2" Iron Rod

Set 1/2" Iron Rod

Fnd. 1/2" Iron Rod

Set 1/2" Iron Rod

Set 1/2" Iron Rod

Fnd. 1/2" Iron Rod
N=662,345.94
E=3,759,572.75

Fnd. 1/2" Iron Rod

6" PVC
TC: = 16.10
INV. = 15.94'

6" PVC
INV. = 15.62'

18" RCP
INV. = 14.39'

18" RCP
INV. = 14.37'

22" RCP
TC: = 15.23'
INV. = 13.62'

22" RCP
INV. = 13.34'

MATCH BLDG HGT
OF THIS OFFICE

5' FINISHED FLOOR ELEVATION 16.3'

BLDG.

BLDG.

BLDG.

BLDG.

METAL BUILDING

METAL BUILDING

METAL

METAL

METAL

METAL

METAL

METAL

METAL

METAL

METAL

METAL

METAL

METAL

METAL

METAL

METAL

METAL

METAL

TRAILER

TRAILER

TRAILER

TRAILER

TRAILER

TRAILER

TRAILER

TRAILER

TRAILER

TRAILER

TRAILER

TRAILER

TRAILER

TRAILER

TRAILER

TRAILER

TRAILER

TRAILER

TRAILER

TRAILER

DITCH

DITCH

DITCH

DITCH

DITCH

DITCH

DITCH

DITCH

DITCH

DITCH

DITCH

DITCH

DITCH

DITCH

DITCH

DITCH

DITCH

DITCH

(GRAVEL)

(GRAVEL)

(GRAVEL)

(GRAVEL)

GRAVEL

GRAVEL

GRAVEL

GRAVEL

GRAVEL

GRAVEL

GRAVEL

GRAVEL

GRAVEL

GRAVEL

GRAVEL

GRAVEL

GRAVEL

GRAVEL

GRAVEL

GRAVEL

GRAVEL

GRAVEL

GRAVEL

GRAVEL

GRAVEL

GRAVEL

GRAVEL

GRAVEL

GRAVEL

GRAVEL