

FILE NAME: \\S:\Government\310 - Fire Station #10\Drawings\General\Drawings\102 - Ceiling Framing Plan.dwg  
 PLOT DATE: 12/10/2025 10:05:33 AM  
 PLOT BY: B. MISTICH

**DESIGN CRITERIA**

THE CONSTRUCTION FOR SAID RESIDENCE, WHERE BASIC WIND SPEED IS 140 MILES PER HOUR, WIND EXPOSURE ZONE C, IS DESIGNED IN ACCORDANCE WITH: AMERICAN FOREST AND PAPER ASSOCIATION (AF&PA) WOOD FRAME CONSTRUCTION MANUAL FOR ONE AND TWO FAMILY DWELLINGS (WFCM) 2001 EDITION AS WELL AS THE INTERNATIONAL RESIDENTIAL CODE (IRC) 2021 EDITION.

**GENERAL CEILING FRAMING NOTES**

- REFER TO SHEET S601 FOR TYPICAL CONNECTION DETAILS AND SCHEDULES.
- PROVIDE CEILING FRAMING AT ALL GYPSUM BOARD CEILINGS AND SOFFITS SHOWN.
- ALL CEILING JOISTS SHALL BE SPACED AT 16 INCHES OC UNLESS NOTED OTHERWISE.
- PROVIDE DOUBLE JOISTS AT SIDES OF FRAMED OPENINGS AND AT CHANGES IN FRAMING DIRECTION UNLESS MORE STRINGENT FRAMING IS SHOWN.
- CONTRACTOR SHALL COORDINATE JOIST LAYOUT WITH LIGHTS, VENTS, ACCESS OPENINGS, AND OTHER CEILING PENETRATIONS AS REQUIRED.
- PROVIDE FRAMED OPENING WHERE NECESSARY TO ACCOMMODATE RECESSED LIGHT FIXTURES. WHERE CONFLICT OCCURS, RECESSED LIGHT LOCATION GOVERNS.
- PROVIDE DOUBLE JOISTS AT EACH SIDE OF JOISTS THAT ARE CUT. DO NOT CUT MORE THAN TWO ADJACENT JOISTS.
- REFER TO TABLES S102.1 AND S102.2 FOR HEADER SCHEDULE. ALL HEADERS WILL COMPLY WITH SAID SCHEDULE UNLESS NOTED OTHERWISE.
- PROVIDE 5/8" DECKING FOR A/C UNITS AND WATER HEATER. REFER TO MECHANICAL PLAN M101 FOR REFERENCE.
- SEE REFLECTED CEILING PLAN A102 FOR ACCESS PANEL SIZE & LOCATION. COORDINATE EXACT LOCATION W/EQUIPMENT LAYOUT. COORDINATE ROUGH OPENING DIMENSIONS WITH ACCESS PANEL MANUFACTURER.
- REFER TO DOOR AND WINDOW SCHEDULES FOR OPENING DIMENSIONS.
- PROVIDE LOOKOUTS OF EQUAL SIZE OF ADJACENT CEILING JOISTS WHERE CEILING JOISTS ARE NOT PARALLEL TO ROOF RAFTERS.
- ALL CEILING JOISTS SHALL BE CONNECTED TO ROOF RAFTERS AT ALL ROOF/CEILING FRAMING JUNCTIONS.
- DO NOT PLACE PLYWOOD DECKING ABOVE IT CLOSET 105 OR WALLS ENCLOSING IT TO ACCOMMODATE CONDUITS AND SNEEPS. COORDINATE WITH RELEVANT TRADES CLEARANCE REQUIREMENTS.
- ADJUST FRAMED OPENING AS NECESSARY TO ACCOMMODATE CLEARANCE NEEDED FOR TELESCOPING ATTIC STAIR.

**LEGEND**

- ← 2x8 → CEILING JOIST SPAN DIRECTION AND JOIST SIZE
- EXTENTS OF 3/4" PLYWOOD DECK
- EXTENTS OF 5/8" PLYWOOD DECK
- FRAMED OPENING

**TABLE S102.1 - HEADER SPANS - INTERIOR LOADBEARING WALLS**  
WFCM 2001 Table 3.24A1 & 3.24B1

HEADER SUPPORTING	SIZE	BUILDING WIDTH (FT)		
		12	24	36
		SPAN (FT - IN)		
ONE FLOOR (CENTER BEARING)	(2) 2x4	4'-0"	2'-10"	2'-4"
	(2) 2x6	5'-11"	4'-3"	3'-5"
	(2) 2x8	7'-1"	5'-2"	4'-4"
	(2) 2x10	7'-11"	6'-0"	5'-0"
	(2) 2x12	8'-6"	6'-7"	5'-7"
	(3) 2x8	8'-5"	6'-4"	5'-3"
	(3) 2x10	9'-3"	7'-1"	6'-0"
	(3) 2x12	9'-11"	7'-8"	6'-7"
	(4) 2x8	9'-5"	7'-2"	6'-0"
	(4) 2x10	10'-3"	7'-11"	6'-9"
TWO FLOORS ONLY (CENTER BEARING)	(2) 2x4	2'-7"	1'-11"	1'-7"
	(2) 2x6	3'-10"	2'-10"	2'-5"
	(2) 2x8	4'-9"	3'-7"	3'-0"
	(2) 2x10	5'-6"	4'-2"	3'-6"
	(2) 2x12	6'-1"	4'-9"	4'-1"
	(3) 2x8	5'-10"	4'-5"	3'-9"
	(3) 2x10	6'-7"	5'-1"	4'-4"
	(3) 2x12	7'-2"	5'-8"	4'-11"
	(4) 2x8	6'-7"	5'-1"	4'-3"
	(4) 2x10	7'-5"	5'-9"	4'-11"
(4) 2x12	8'-0"	6'-4"	5'-6"	

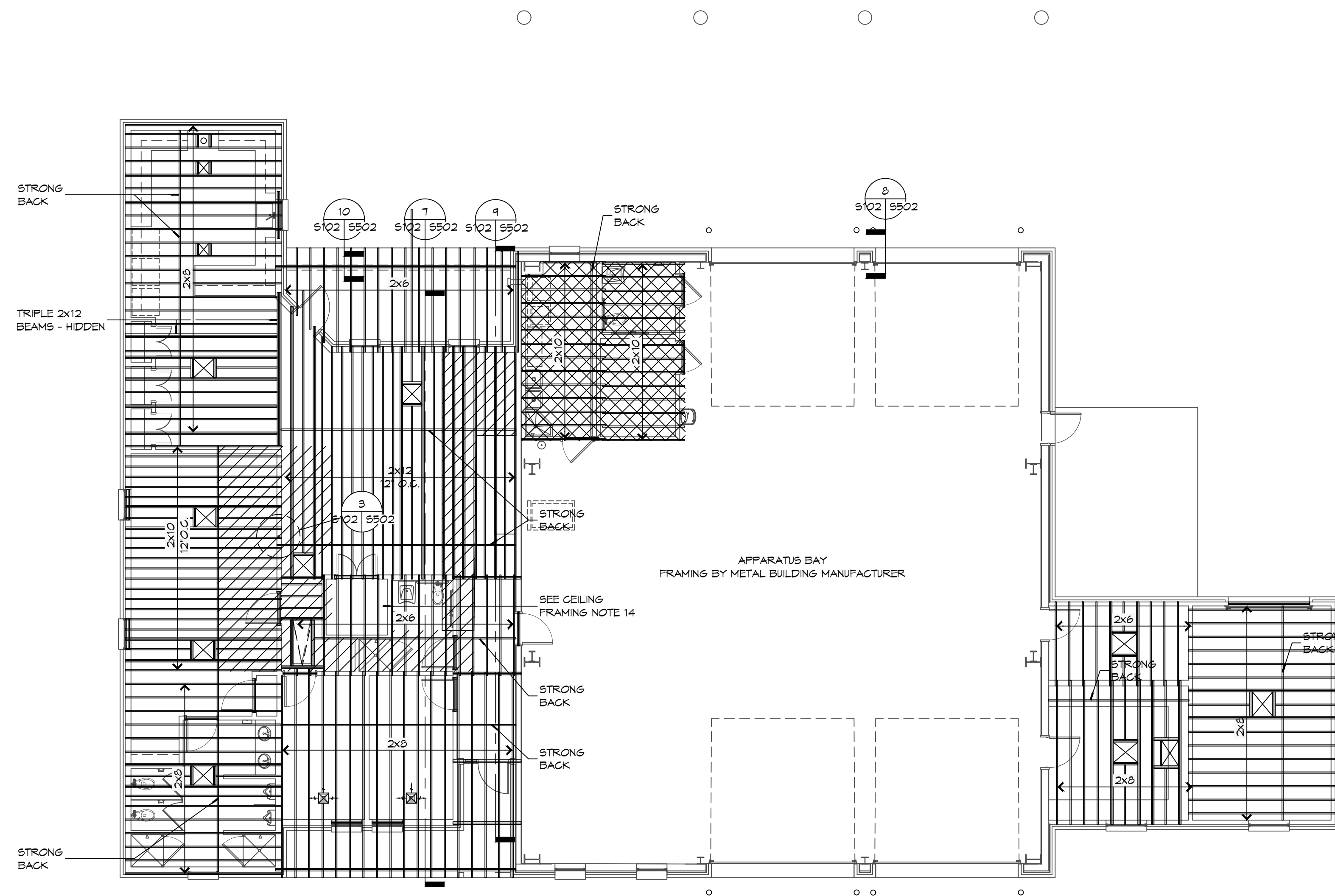
MAXIMUM SPAN 16'-0"  
NOTE: BUILDING WIDTH IS MEASURE PERPENDICULAR TO THE RIDGE. FOR WIDTHS BETWEEN THOSE SHOWN, SPANS ARE PERMITTED TO BE INTERPOLATED.

**TABLE S102.2 - HEADER SPANS - EXPOSURE "C" FOR EXTERIOR LOADBEARING WALLS**  
WFCM 2001 Table 3.23a

HEADER SIZE	SPAN	NUMBER FULL HEIGHT STUDS REQ AT EA END
(2) 2x4	4'-0"	TWO
(2) 2x6	4'-10"	TWO
(2) 2x8	5'-4"	TWO
(2) 2x10	5'-8"	TWO
(2) 2x12	6'-1"	TWO
(3) 2x8	6'-6"	THREE
(3) 2x10	7'-0"	THREE
(3) 2x12	7'-5"	THREE
(4) 2x8	7'-6"	FOUR
(4) 2x12	8'-7"	FOUR

140 MPH WIND - EXPOSURE 'C' (TYPICAL) EACH 1/1/2" PLYWOOD SPACER BETWEEN

**NOTE:**  
1. ALL HEADERS SHALL HAVE SOLID BLOCKING.



**1 CEILING FRAMING PLAN**  
SCALE: 1/8" = 1'-0"

**DAMMON ENGINEERING, INC.**  
 LOUISIANA & MISSISSIPPI  
 www.dammonengineering.com  
 info@dammonengineering.com  
 554 Old Spanish Trail  
 Slidell, LA 70458  
 Chief Engineer: Brian Mistich, PE  
 12/10/2025

REVISIONS	DATE	DESCRIPTION



NEW FIRE STATION #10  
 ST. TAMMANY FIRE PROTECTION DISTRICT NO. 1  
 2145 LAKESHORE VISTA BLVD  
 SLIDELL, LA 70461  
 JOB No: 2519 DATE: 12-09-2025  
 DRAWN BY: CKD CHECKED BY: BAK

SHEET TITLE:  
CEILING FRAMING PLAN AND DETAILS

DRAWING NUMBER:

**S102**