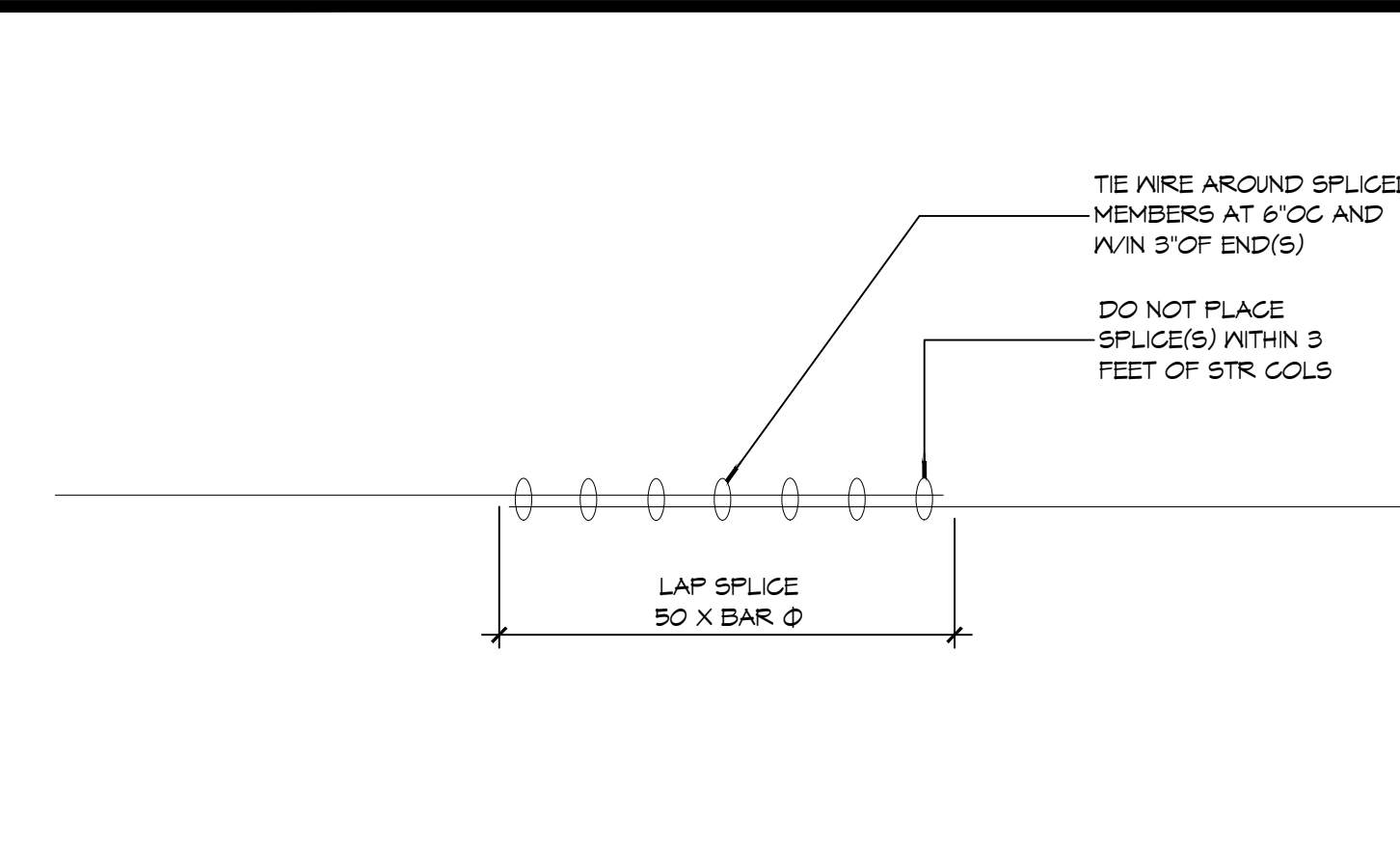
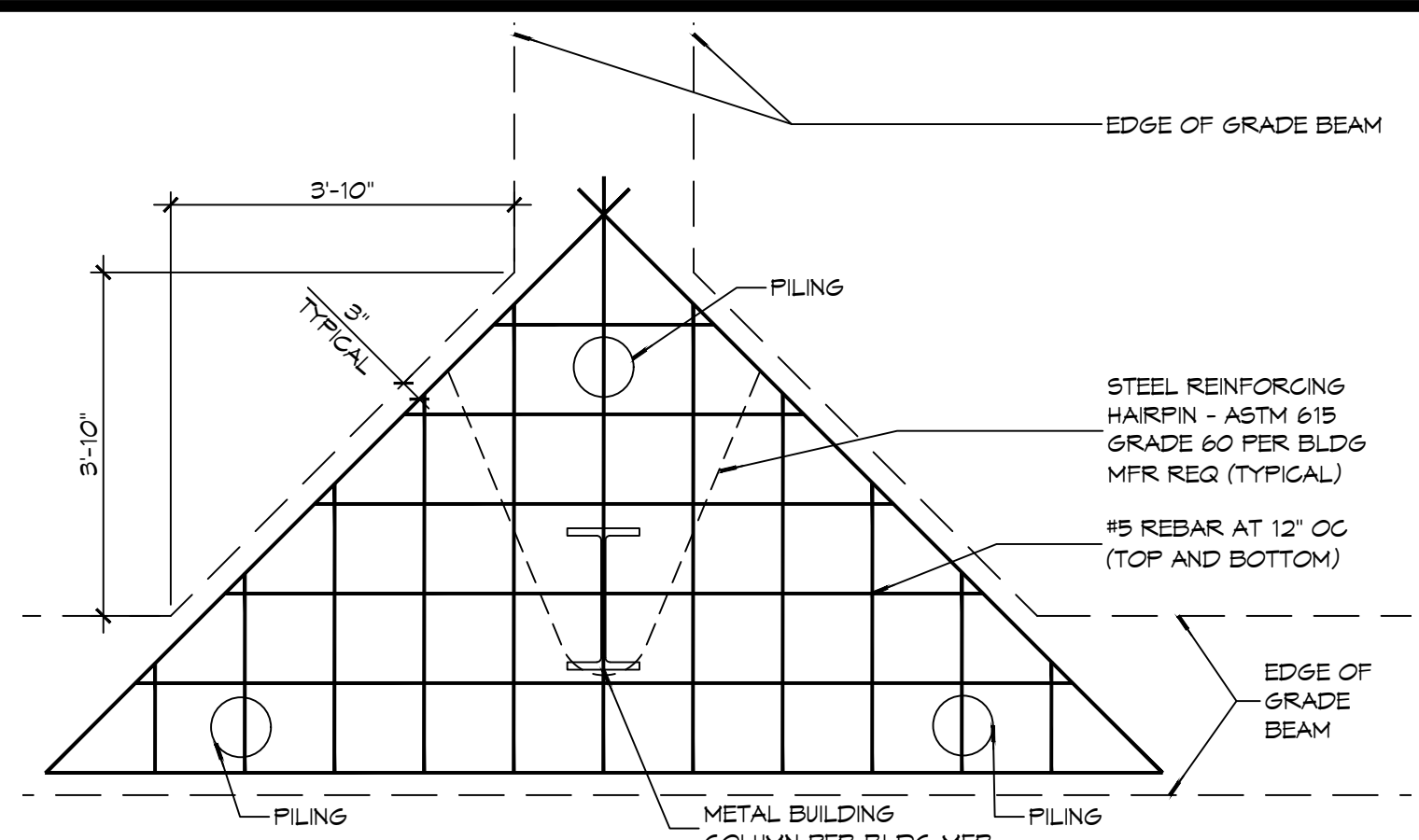


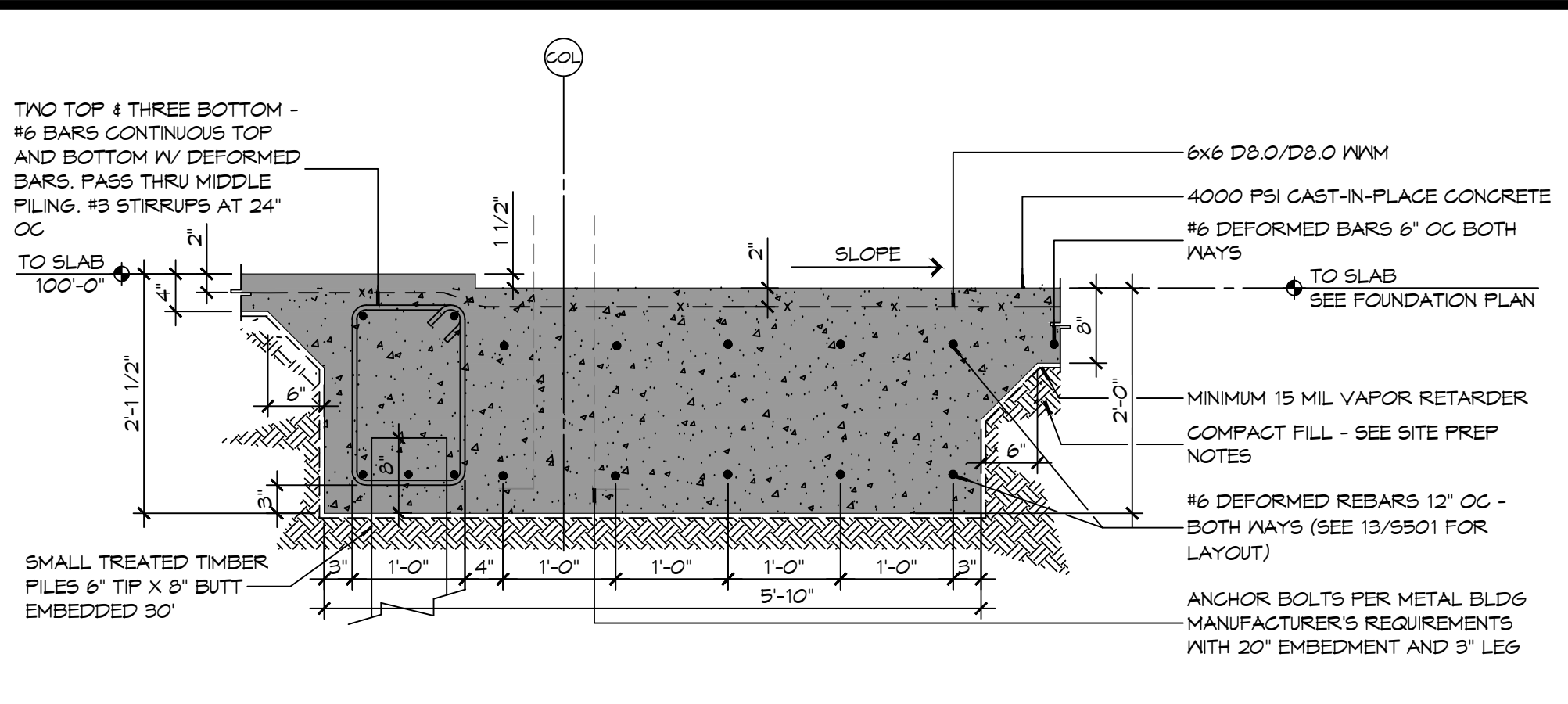
FILE NAME: J:\S_Government\310 - Fire Station #10\310-Foundation\310-Foundation.dwg, PLOT DATE: 12/05/2025, 10:08:11 AM, Plotter: HP DesignJet 500



14 FOUNDATION DETAIL
 55015101 SCALE: NTS

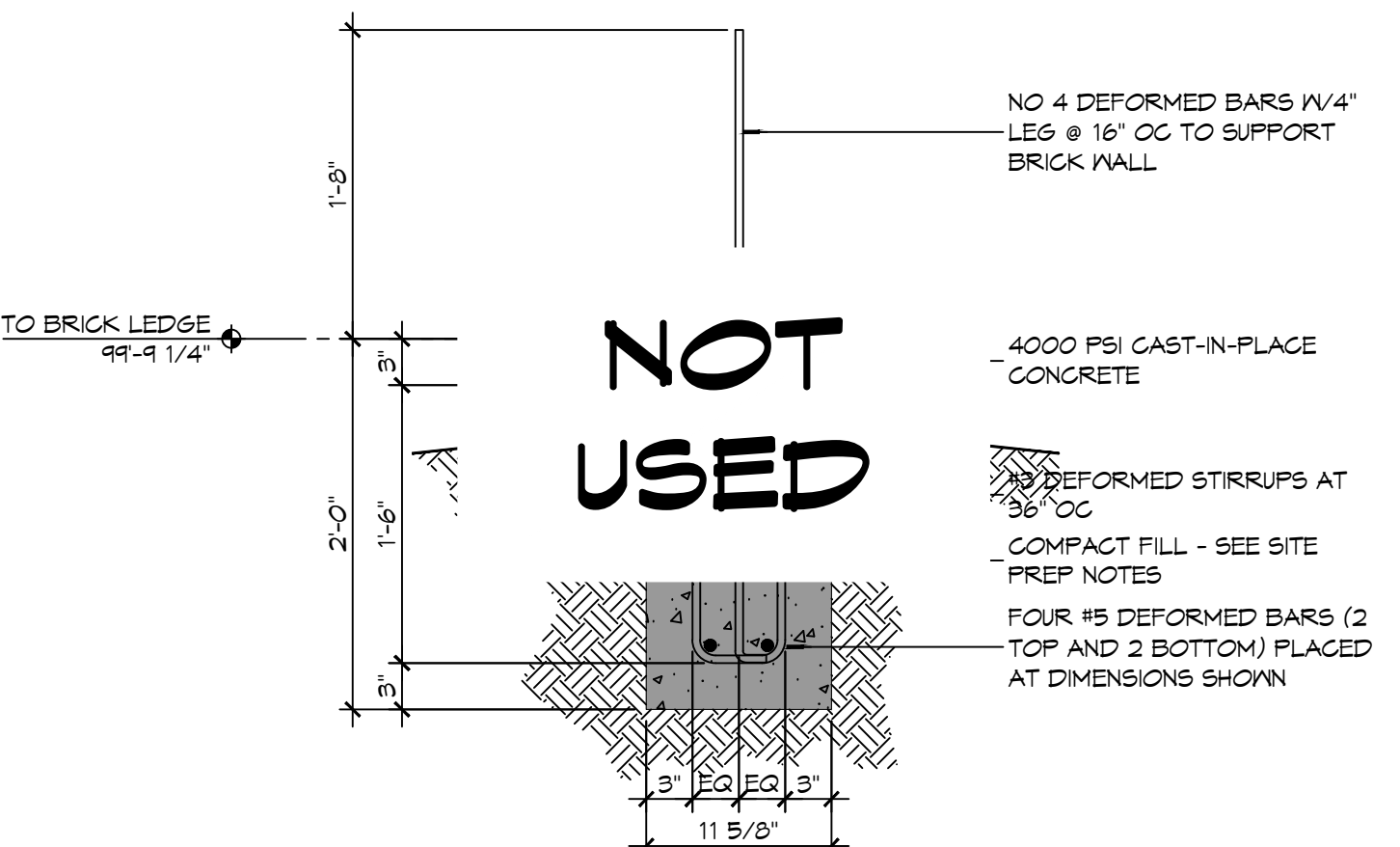


13 FOUNDATION DETAIL
 55015101 SCALE: 1/2" = 1'-0"

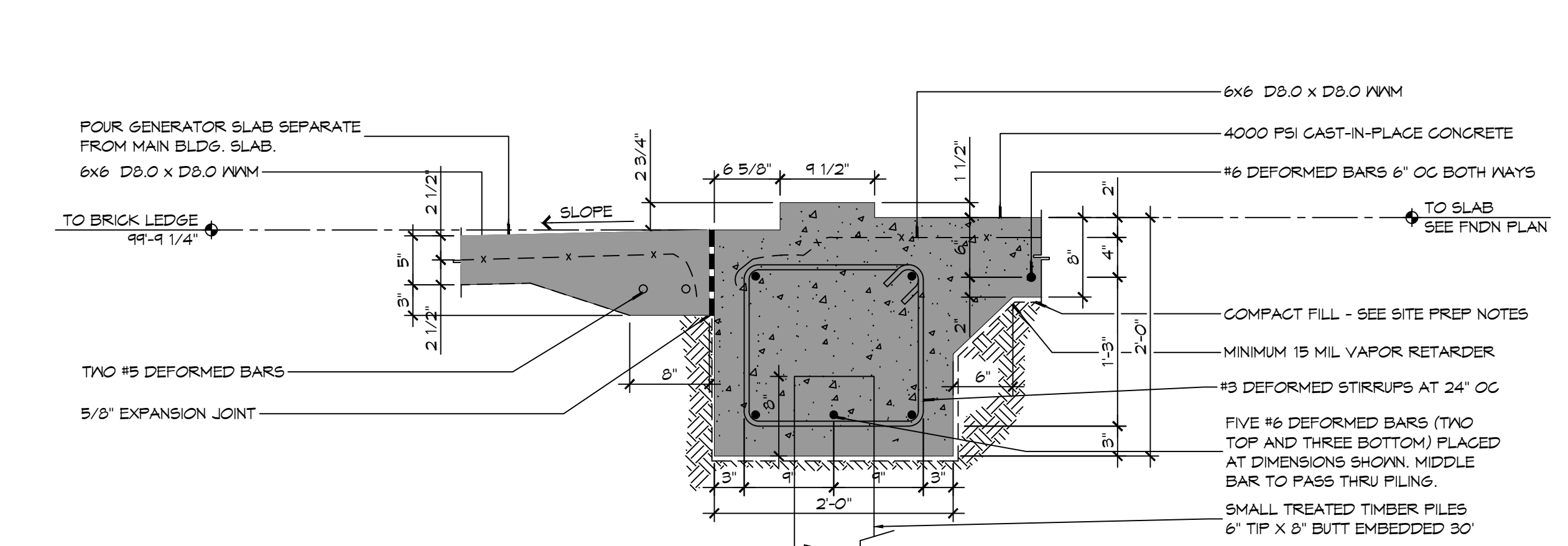


12 FOUNDATION DETAIL
 55015101 SCALE: 3/4" = 1'-0"

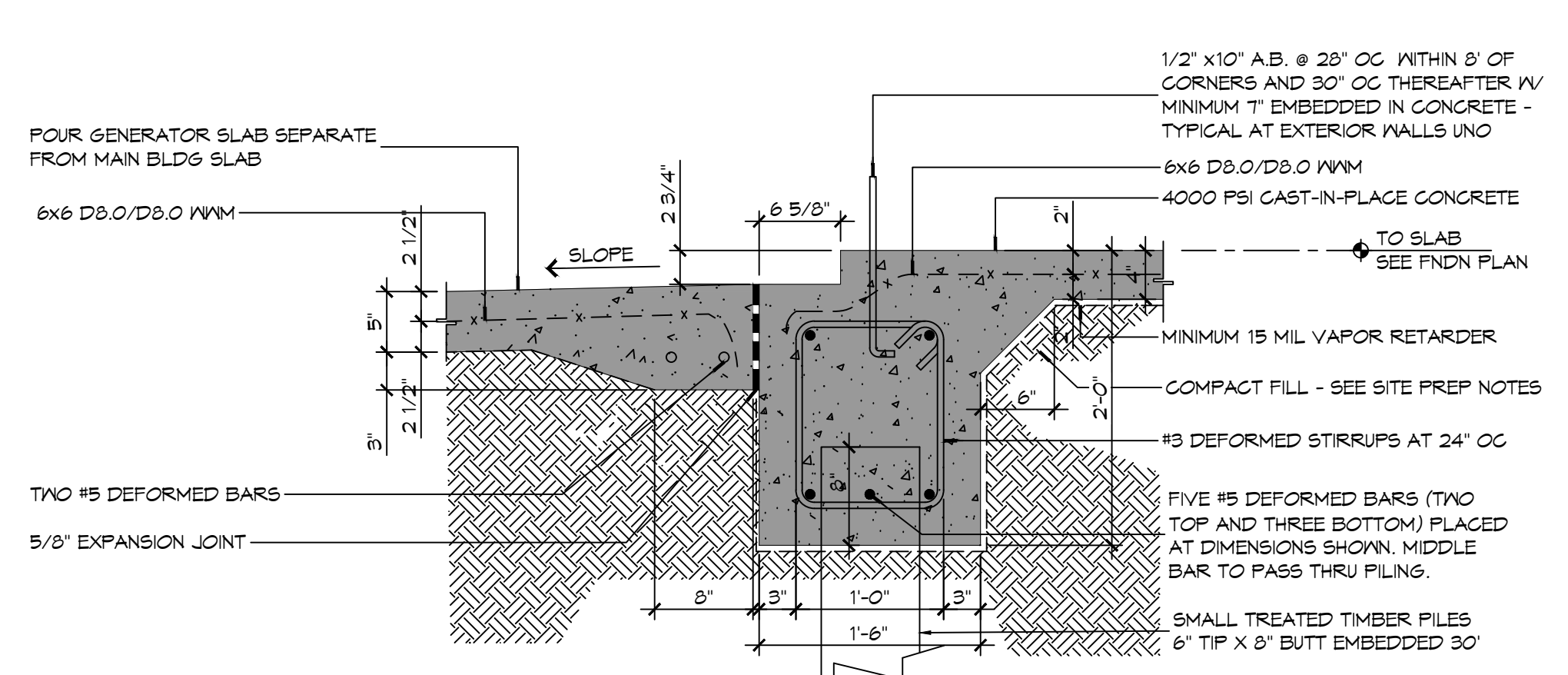
- ### GENERAL FOUNDATION NOTES
- CONCRETE REINFORCING STEEL SHALL CONFORM TO THE REQUIREMENTS OF ASTM A605, GRADE 60. REINFORCING TO BE WELDED SHALL CONFORM TO THE REQUIREMENTS OF ASTM A706, GRADE 60, UNLESS NOTED OTHERWISE.
 - FABRICATION OF REINFORCING STEEL SHALL BE IN ACCORDANCE WITH THE DETAILS OF AC308-91, "DETAILING OF CONCRETE REINFORCEMENT".
 - CORNER BARS SHALL BE PROVIDED AT ALL CORNERS AND INTERSECTIONS OF CONCRETE BEAMS, GRADE BEAMS, WALLS, AND STEM WALLS.
 - UNLESS NOTED OTHERWISE, CONCRETE COVER SHALL CONFORM TO THE MINIMUMS REQUIRED BY AC308-08.
 - THE CONTRACTOR SHALL BE RESPONSIBLE FOR THE STABILITY OF THE STRUCTURE DURING CONSTRUCTION.
 - WORK NOT INDICATED AS PART OF THE DRAWINGS BUT REASONABLY IMPLIED TO BE SIMILAR TO THAT A CORRESPONDING PLACES SHALL BE REPEATED.
 - ALL EXCAVATIONS FOR FOOTINGS OR PILE CAPS SHALL BE MADE TO GRADES SHOWN. CONTRACTOR SHALL TAKE MEASURES TO PREVENT CAVE-IN OF THE FOOTING EXCAVATION. THESE MEASURES MAY INCLUDE CUTTING BACK THE SIDE SLOPES AND/OR THE USE OF SIDE FORMS.



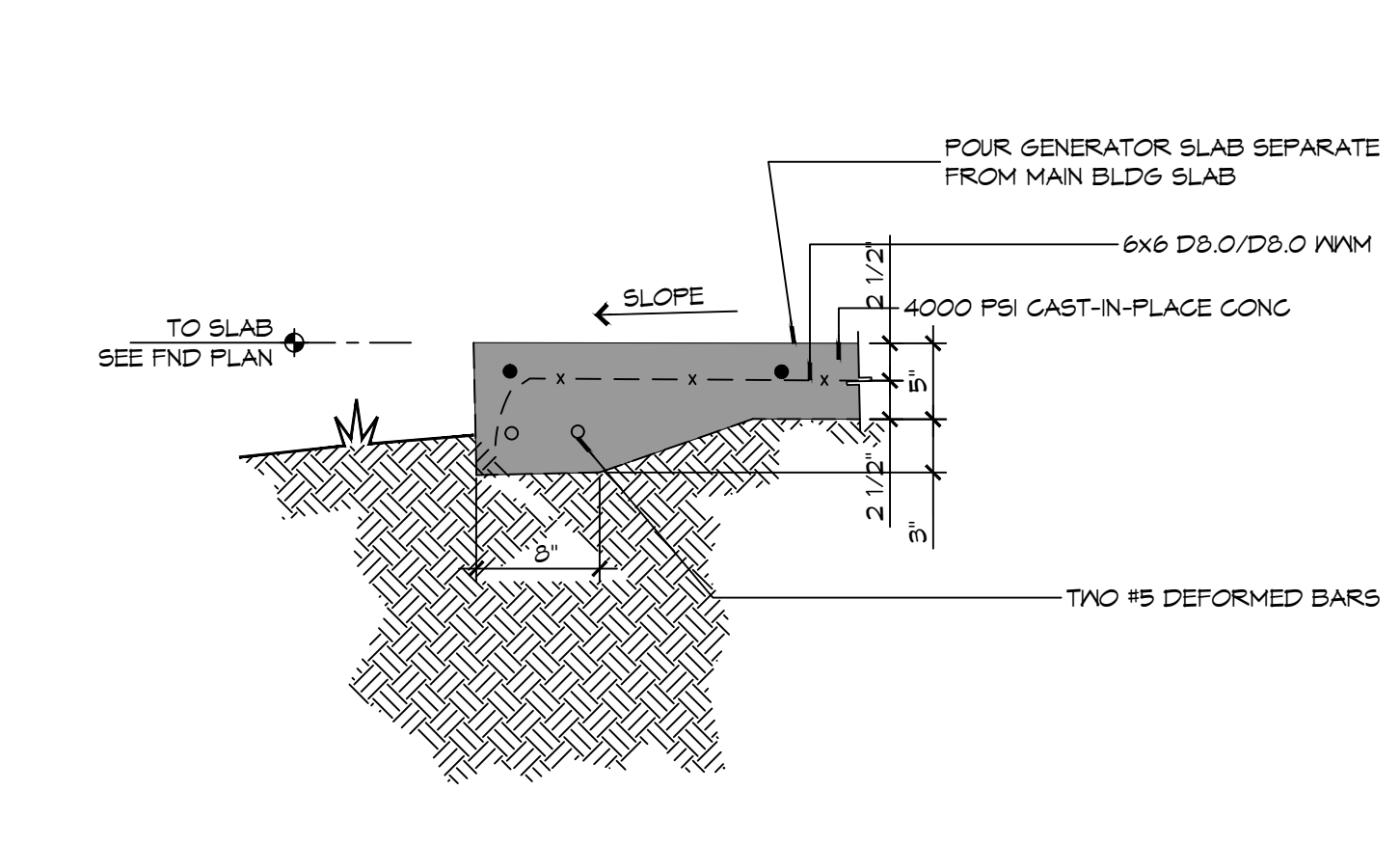
11 FOUNDATION DETAIL
 55015101 SCALE: 1" = 1'-0"



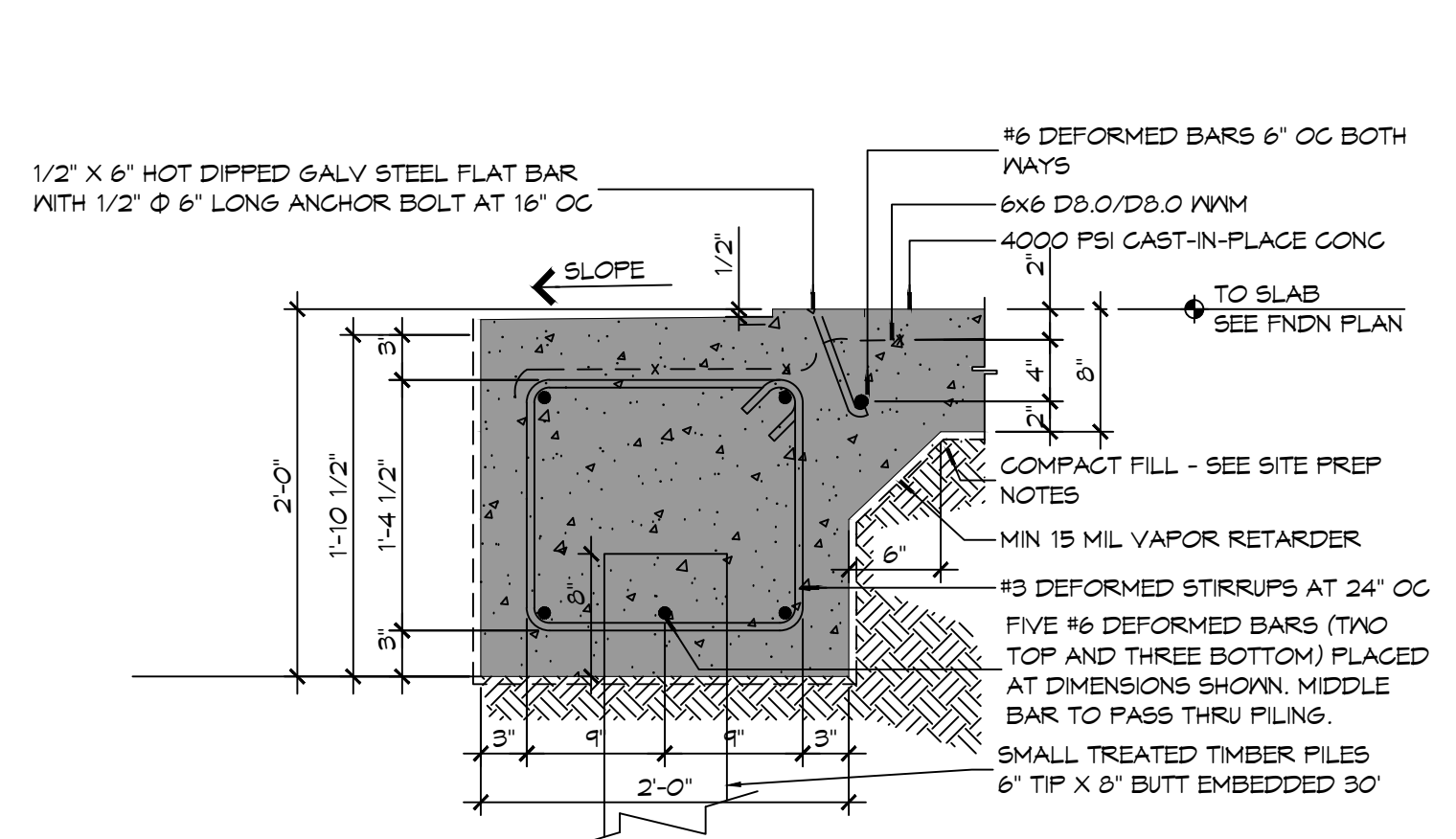
10 FOUNDATION DETAIL
 55015101 SCALE: 1" = 1'-0"



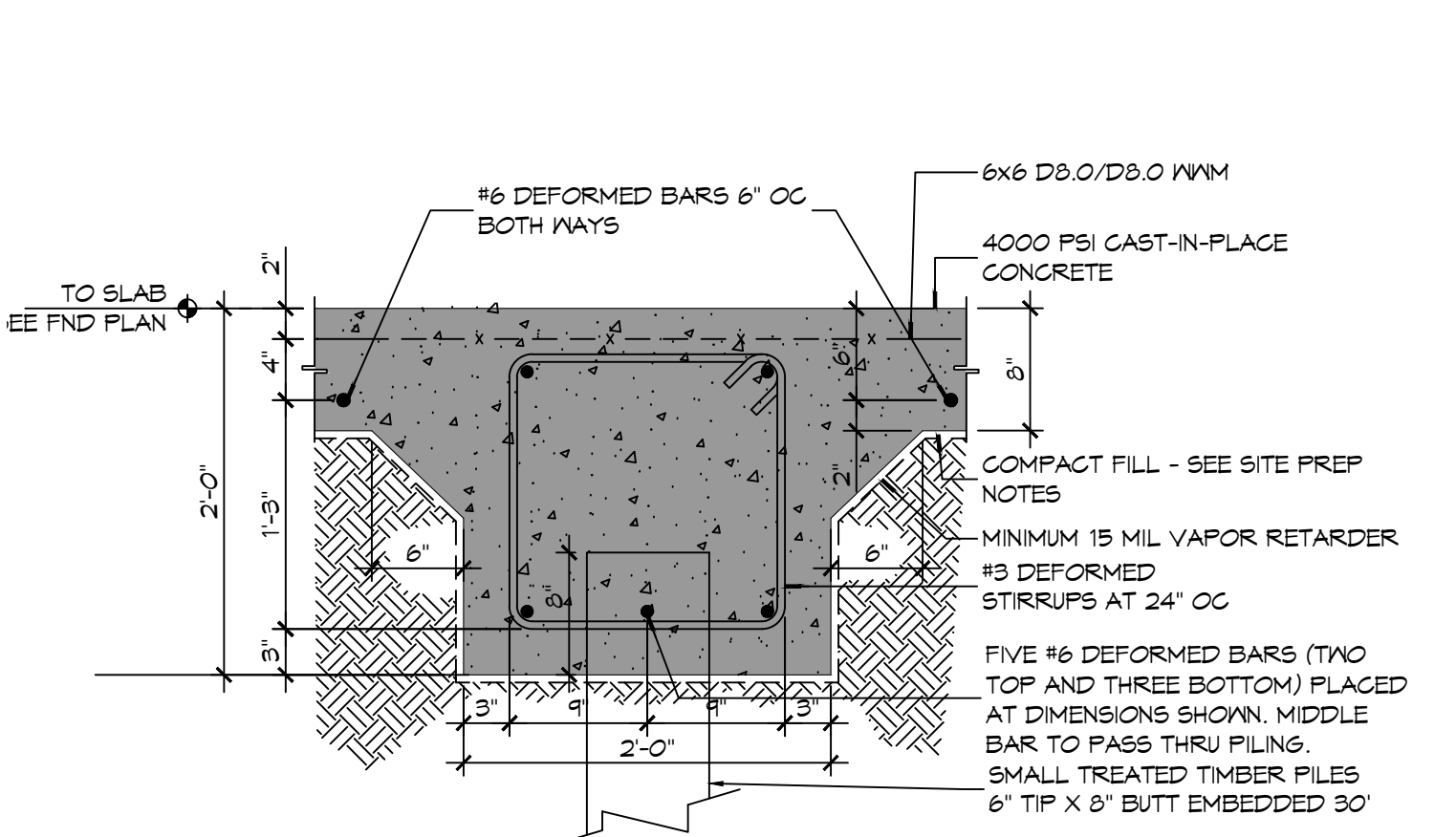
9 FOUNDATION DETAIL
 55015101 SCALE: 1" = 1'-0"



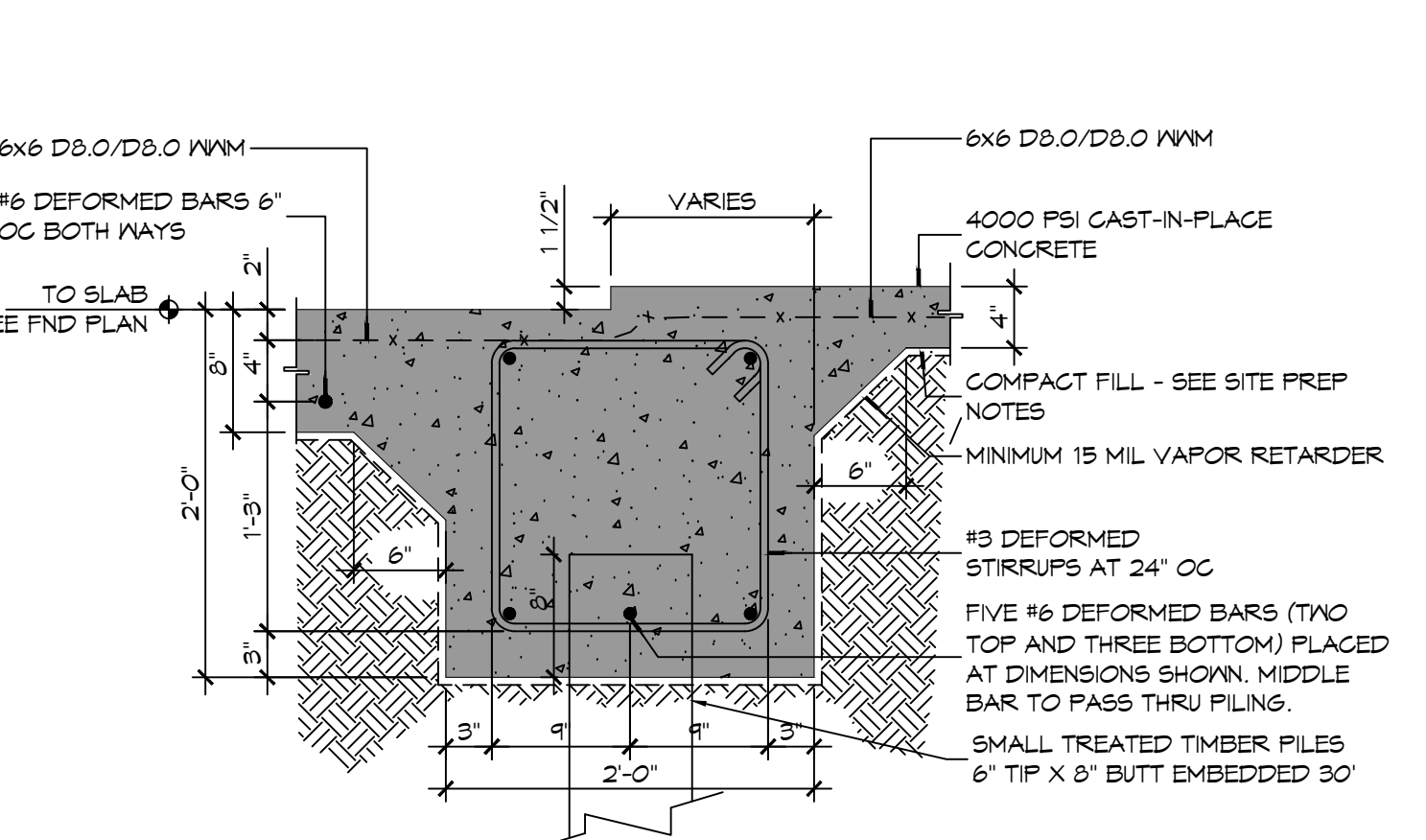
8 FOUNDATION DETAIL
 55015101 SCALE: 1" = 1'-0"



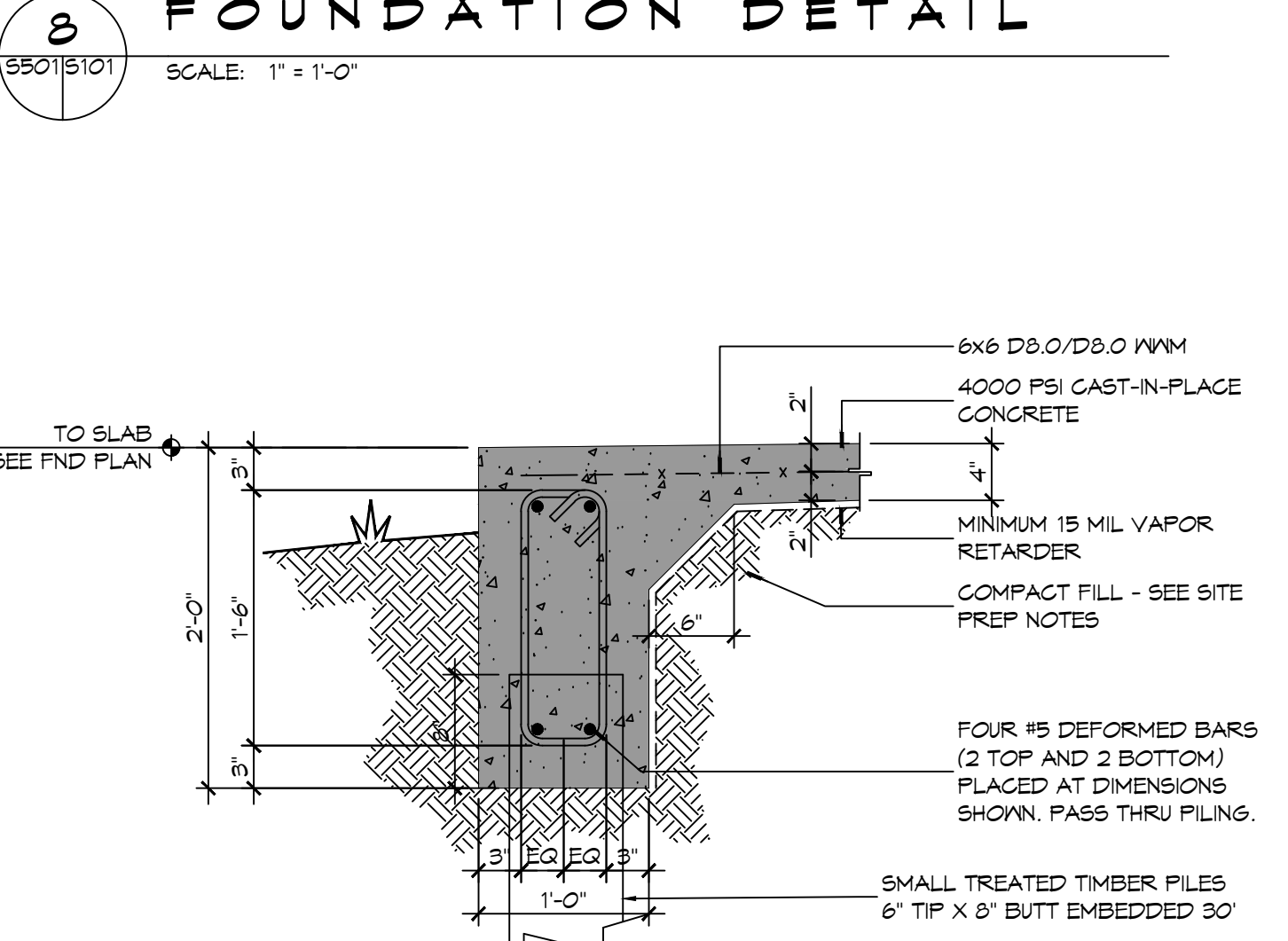
7 FOUNDATION DETAIL
 55015101 SCALE: 1" = 1'-0"



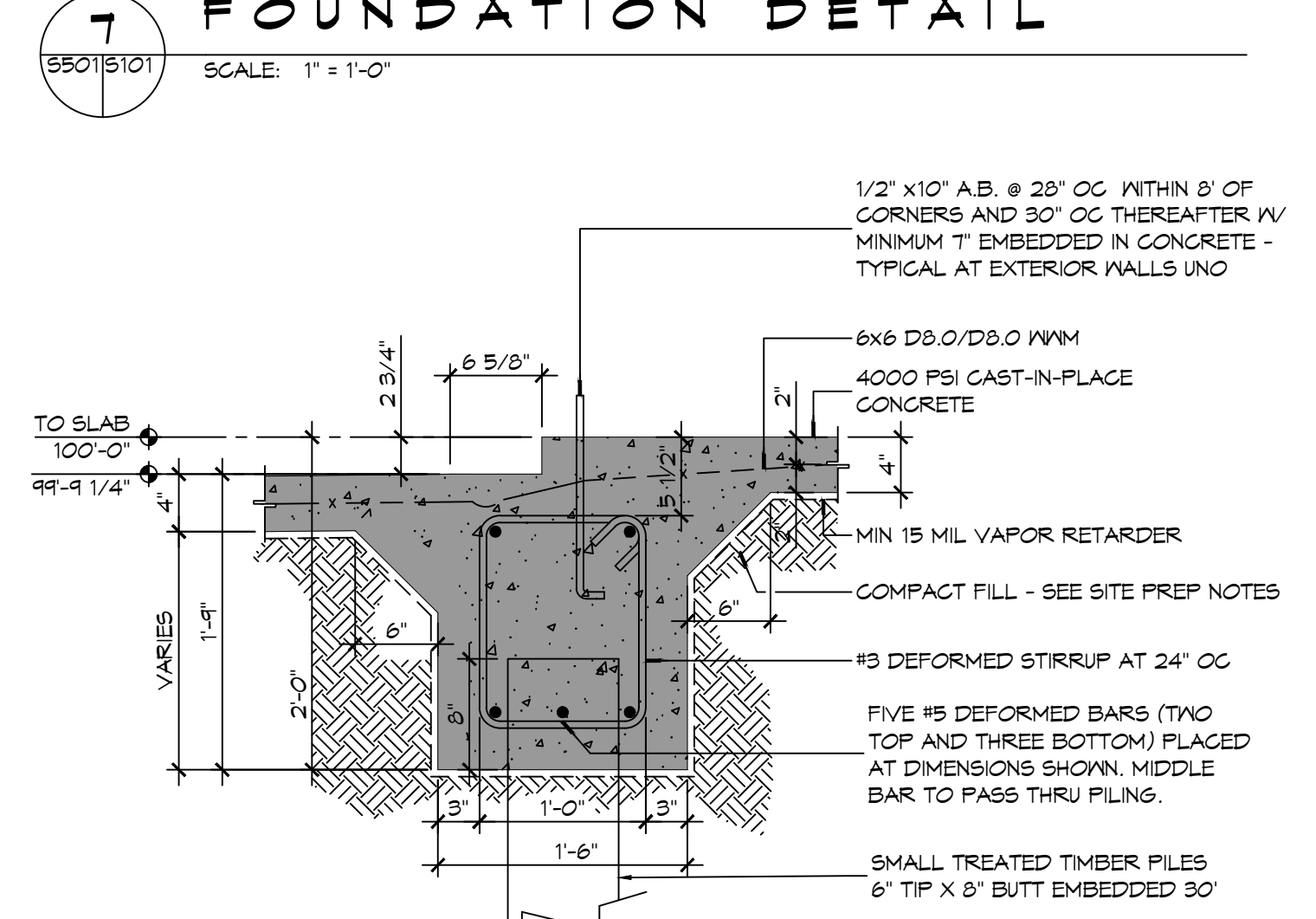
6 FOUNDATION DETAIL
 55015101 SCALE: 1" = 1'-0"



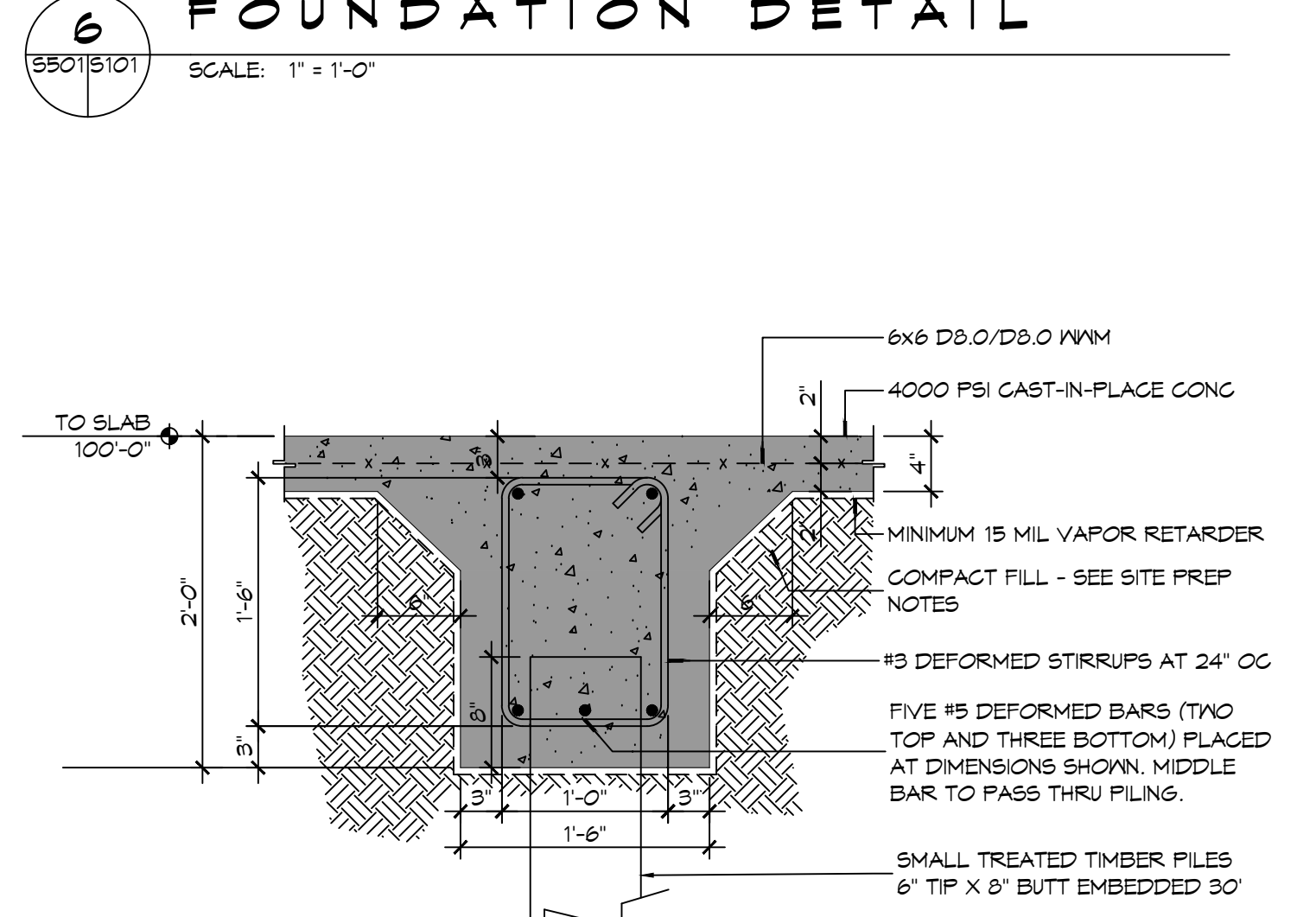
5 FOUNDATION DETAIL
 55015101 SCALE: 1" = 1'-0"



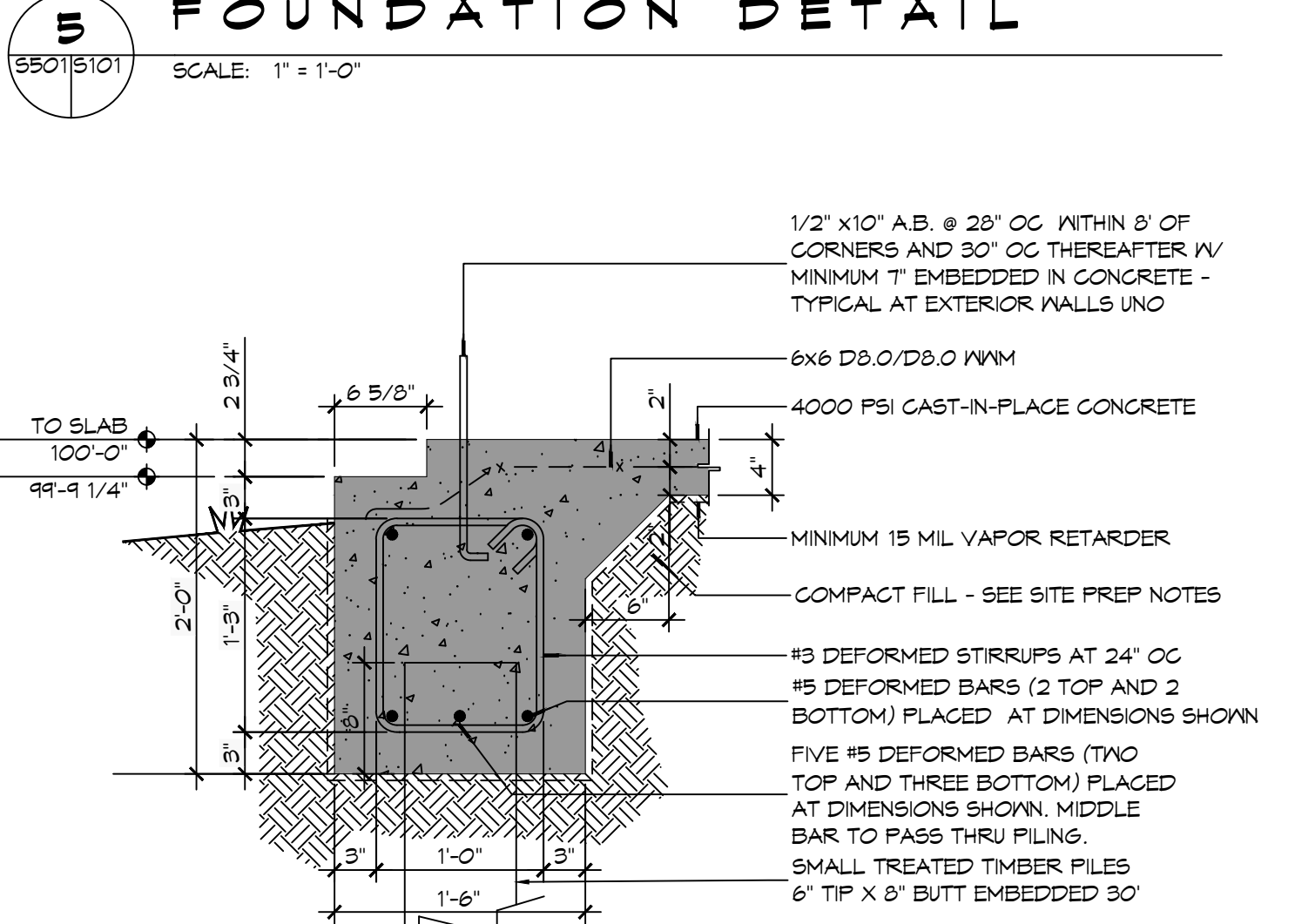
4 FOUNDATION DETAIL
 55015101 SCALE: 1" = 1'-0"



3 FOUNDATION DETAIL
 55015101 SCALE: 1" = 1'-0"



2 FOUNDATION DETAIL
 55015101 SCALE: 1" = 1'-0"



1 FOUNDATION DETAIL
 55015101 SCALE: 1" = 1'-0"

DAMMON ENGINEERING, INC.

LOUISIANA & MISSISSIPPI
 Chief Engineer: Brian Mistich, PE
 554 Old Spanish Trail
 Slidell, LA 70458
 www.dammonengineering.com
 info@dammonengineering.com
 PH: 985.649.5832

#	DESCRIPTION	DATE



NEW FIRE STATION #10
ST. TAMMANY FIRE PROTECTION DISTRICT NO. 1
 2148 LAKESHORE VISTA BLVD
 SLIDELL, LA 70461
 JOB No: 2519 DATE: 12-05-2025
 DRAWN BY: CKD CHECKED BY: EAM

SHEET TITLE:
 FOUNDATION DETAILS
 DRAWING NUMBER:
5501
 SHEET No: 15 of 37