

DOOR SCHEDULE

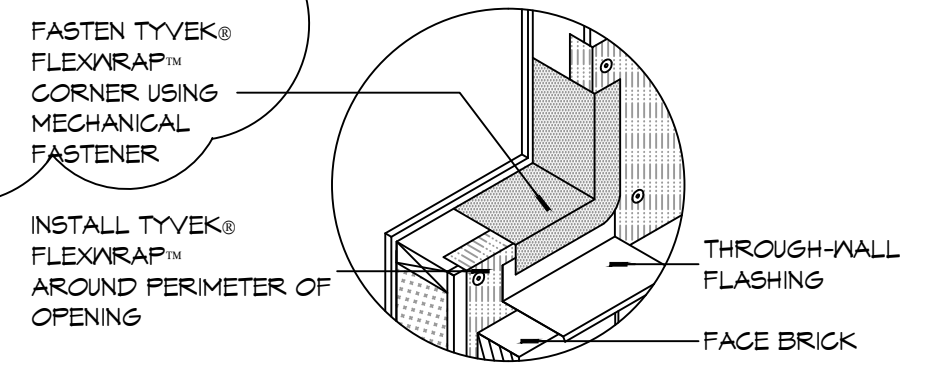
MK	WIDTH	HEIGHT	TYPE	THICK	DOOR MATERIAL	FRAME MATERIAL	FRAME TYPE	HEAD	JAMB	SILL	FR	HWR	REMARKS
101A	3'-0"	7'-0"	FG	1 3/4"	ALUM	ALUM	F4	21/A502	9/A502 & 10/A502	7/A502	NR	01	
101B	3'-0"	7'-0"	F	1 3/4"	INSUL MTL	HM	F1	15/A502	6/A502	1/A502	45 MIN	07	
102A	3'-0"	7'-0"	GG	1 3/4"	ALUM	ALUM	F3	21/A502	10/A502	7/A502	NR	01	
103A	3'-0"	7'-0"	F	1 3/4"	SC WOOD	HM	F2	13/A502	4/A502	8/A502	20 MIN	02	SMOKE TIGHT
104A	3'-0"	7'-0"	F	1 3/4"	SC WOOD	HM	F2	14/A502	5/A502	8/A502	NR	03	
105A	(2) 2'-0"	7'-0"	LL	1 3/4"	SC WOOD	HM	F2	14/A502	5/A502	8/A502	NR	06A	
107A	3'-0"	7'-0"	F	1 3/4"	SC WOOD	HM	F2	13/A502	4/A502	8/A502	20 MIN	02	SMOKE TIGHT
109A	(2) 1'-6"	7'-0"	LL	1 3/4"	SC WOOD	HM	F2	14/A502	5/A502	8/A502	NR	06	
109B	(2) 1'-6"	7'-0"	LL	1 3/4"	SC WOOD	HM	F2	14/A502	5/A502	8/A502	NR	06	
109C	(2) 1'-6"	7'-0"	LL	1 3/4"	SC WOOD	HM	F2	14/A502	5/A502	8/A502	NR	06	
113A	3'-0"	7'-0"	F	1 3/4"	SC WOOD	HM	F2	13/A502	4/A502	8/A502	20 MIN	05	SMOKE TIGHT
114A	3'-0"	7'-0"	F	1 3/4"	SC WOOD	HM	F2	14/A502	5/A502	8/A502	NR	04	
116A	2'-4"	7'-0"	F	1 3/4"	SC WOOD	HM	F2	14/A502	5/A502	8/A502	NR	13	
117A	14'-0"	14'-0"	O2	1 1/2"	INSUL MTL	MTL	N/A	20/A502	19/A502	1/A502	NR	01	NOT USED
117B	14'-0"	14'-0"	O2	1 1/2"	INSUL MTL	MTL	N/A	20/A502	19/A502	1/A502	NR	01	NOTE 1, CHI M# 3324 POWDER COATED, LIFT MASTER 3/4 HP, 844 REMOTE
117C	14'-0"	14'-0"	O2	1 1/2"	INSUL MTL	MTL	N/A	20/A502	19/A502	1/A502	NR	01	NOTE 1, CHI M# 3324 POWDER COATED, LIFT MASTER 3/4 HP, 844 REMOTE
117D	3'-0"	7'-0"	F	1 3/4"	INSUL MTL	HM	F2	18/A502	11/A502	2/A502	NR	12	
118A	3'-0"	7'-0"	L	1 3/4"	METAL	HM	F2	12/A502	3/A502	7/A502	NR	03	
119A	3'-0"	7'-0"	L	1 3/4"	METAL	HM	F2	12/A502	3/A502	7/A502	NR	03	
120A	3'-0"	7'-0"	L	1 3/4"	METAL	HM	F2	12/A502	3/A502	7/A502	NR	09	
121A	14'-0"	14'-0"	O2	1 1/2"	INSUL MTL	MTL	N/A	20/A502	19/A502	1/A502	NR	01	NOTE 1, CHI M# 3324 POWDER COATED, LIFT MASTER 3/4 HP, 844 REMOTE
121B	14'-0"	14'-0"	O2	1 1/2"	INSUL MTL	MTL	N/A	20/A502	19/A502	1/A502	NR	01	NOTE 1, CHI M# 3324 POWDER COATED, LIFT MASTER 3/4 HP, 844 REMOTE
122A	3'-0"	7'-0"	L	1 3/4"	MTL	HM	F2	11/A502	16/A502	7/A502	NR	09	
123A	3'-0"	7'-0"	L	1 3/4"	MTL	HM	F2	13/A502	16/A502	7/A502	NR	09	
124A	-	-	-	-	-	-	-	-	-	-	-	-	NOT USED
124B	8'-0"	7'-0"	O1	1 1/2"	MTL	MTL	N/A	20/A502	19/A502	1/A502	NR	01	MANUAL OPERATION, CHI

WINDOW SCHEDULE

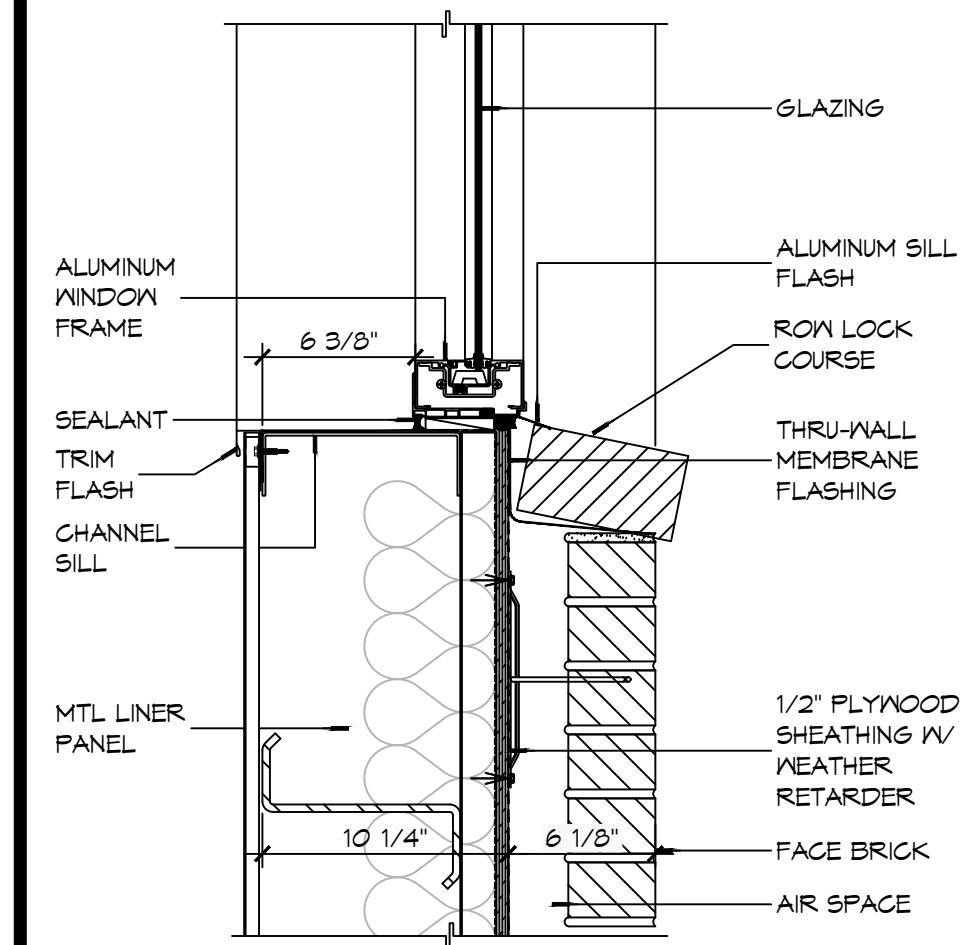
MK	SIZE (WxH)	FRAME	TYPE	GLAZING	REMARKS
A	3'-0"x4'-0"	ALUM	SINGLE HUNG	IMPACT	BLACK FRAME
B	N/A	N/A	N/A	N/A	N/A
C	3'-0"x4'-0"	ALUM	SINGLE HUNG	IMPACT	BLACK FRAME, METAL CHANNEL JAMBS AND HEADERS INSTEAD OF WOOD STUD FRAMING
D	3'-0"x4'-0"	ALUM	SINGLE HUNG	IMPACT	OBSCURE/TRANSLUCENT GLASS W/BLACK FRAME
E	3'-0"x5'-6"	ALUM	SINGLE HUNG	IMPACT	BLACK FRAME

NOTE: ALL EXTERIOR WINDOWS AND DOOR ASSEMBLES TO BE RATED FOR 140 MPH WINDS AND SHALL BE MISSILE IMPACT RESISTANT.

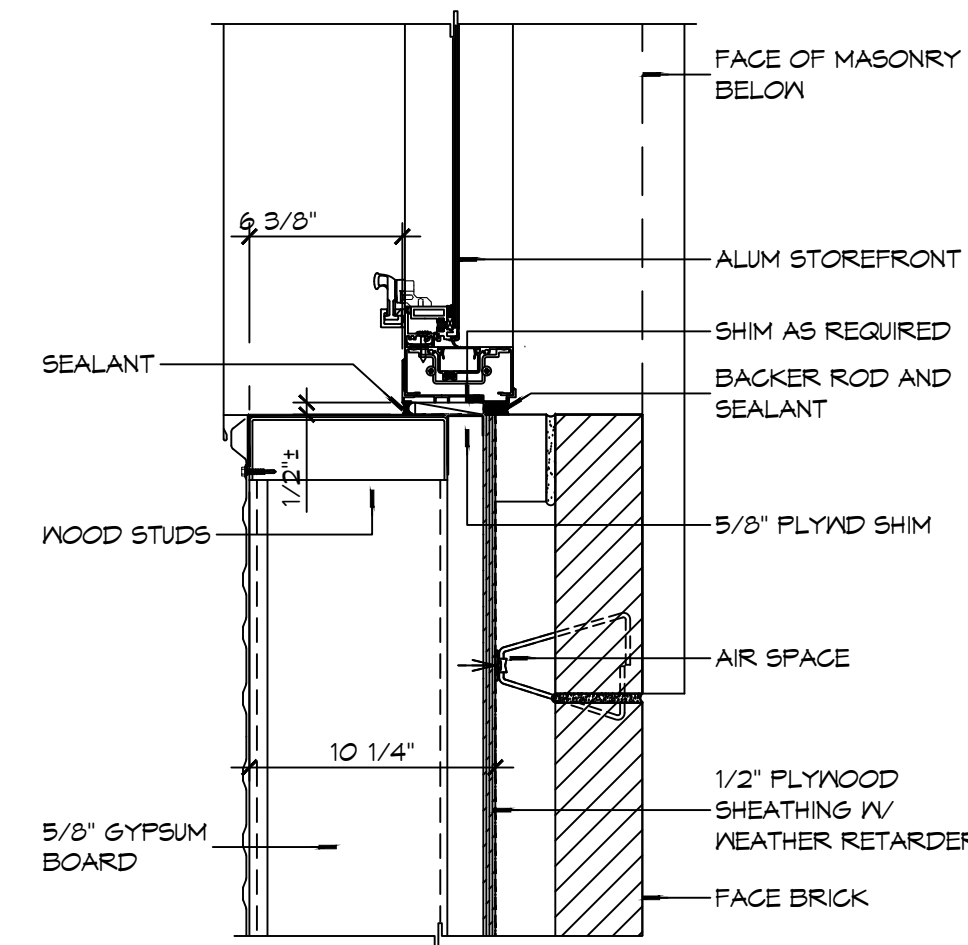
NOTE: DOORS IN A REQUIRED MEANS OF EGRESS SERVING ANY ASSEMBLY AREA HAVING AN OCCUPANT LOAD OF 50 OR MORE PERSONS SHALL NOT BE EQUIPPED WITH A LATCH OR LOCK OTHER THAN PANIC HARDWARE OR FIRE EXIT HARDWARE.



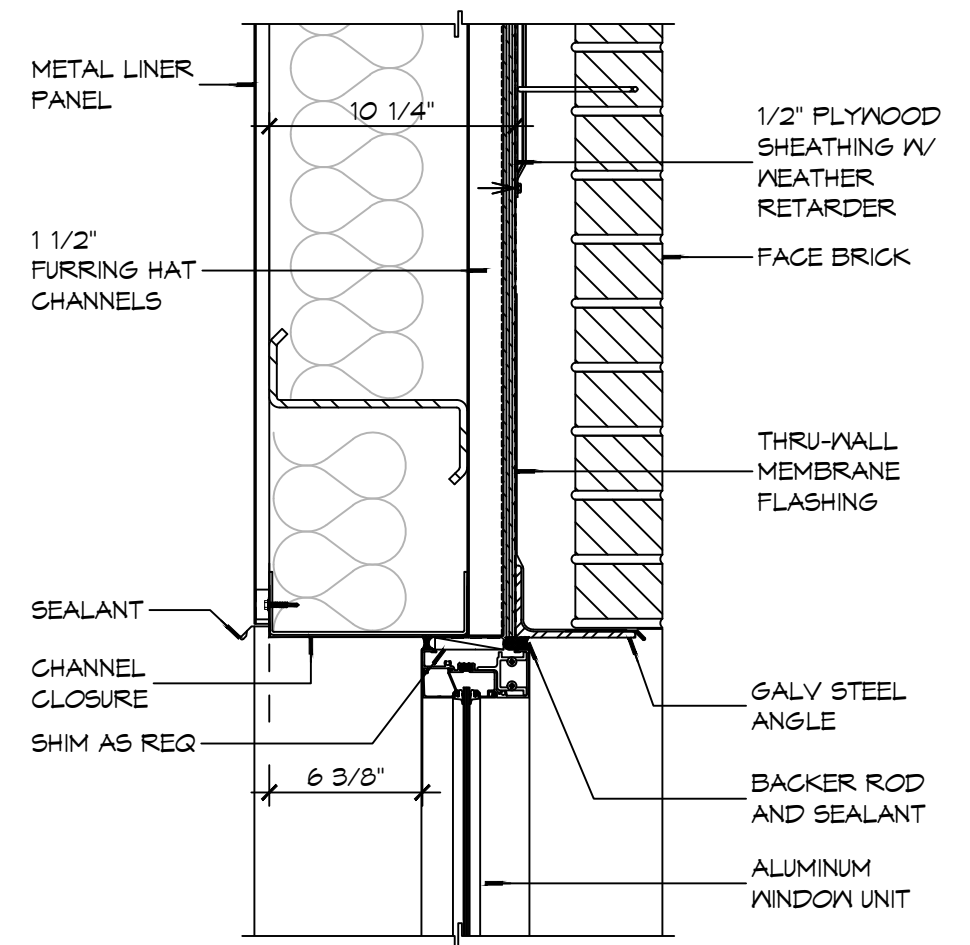
10 DETAIL
SCALE: NTS
TYPICAL WINDOW SILL FLASHING



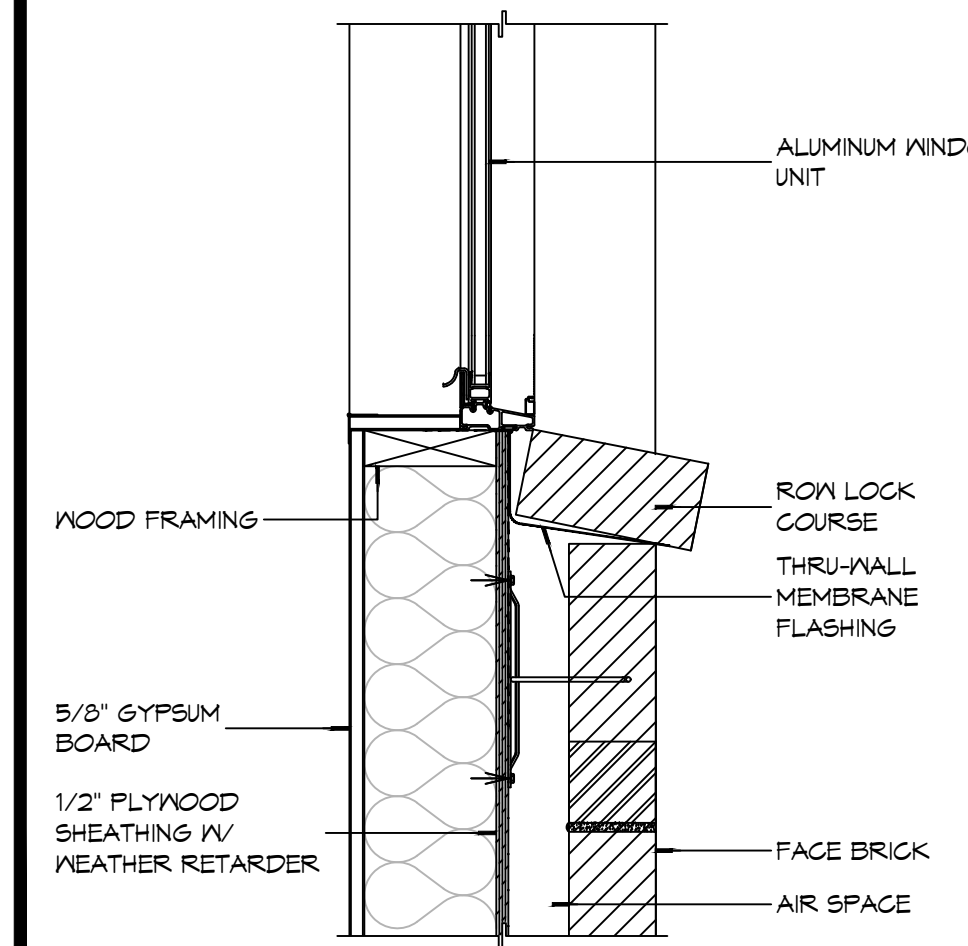
9 WINDOW DETAIL
SCALE: 1 1/2" = 1'-0"
SILL



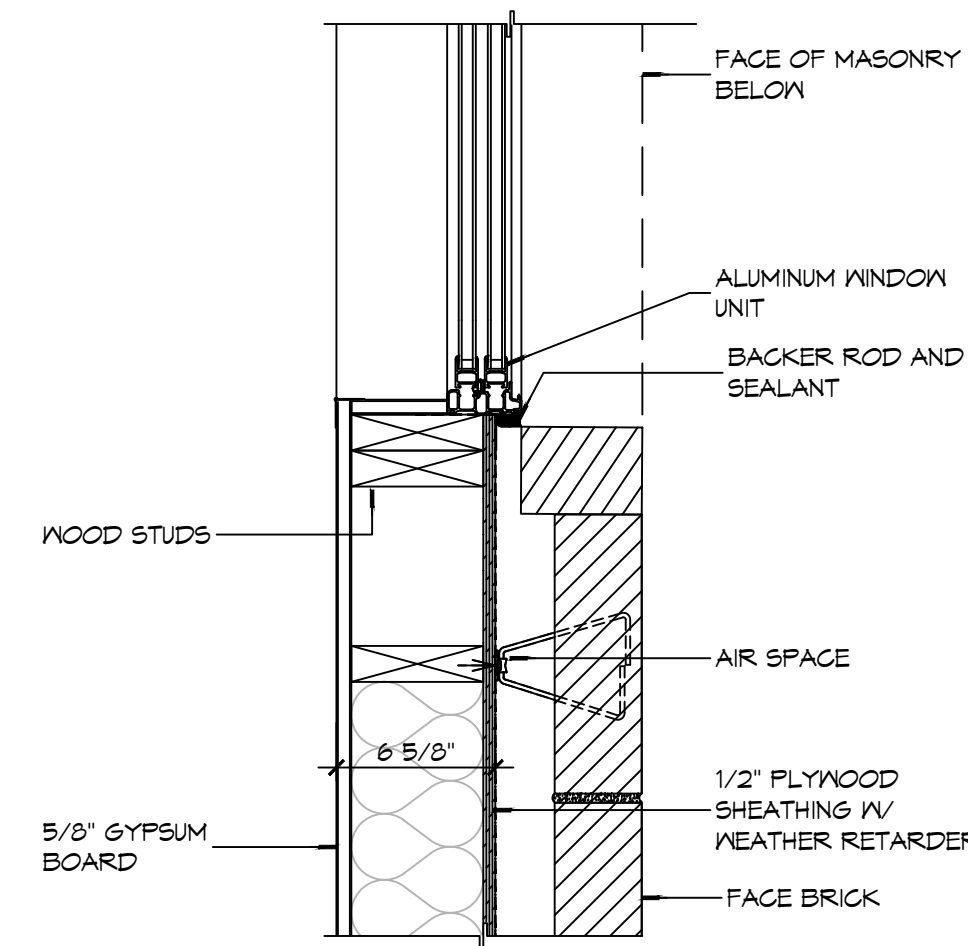
8 WINDOW DETAIL
SCALE: 1 1/2" = 1'-0"
JAMB



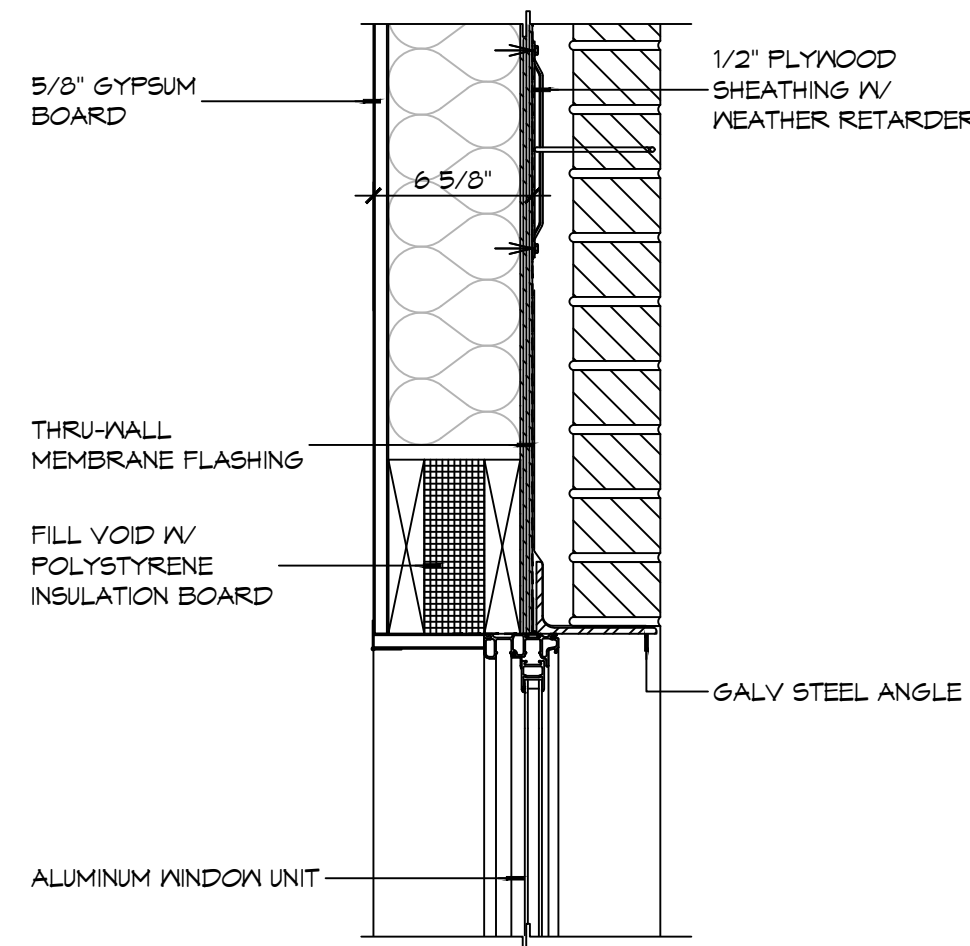
7 WINDOW DETAIL
SCALE: 1 1/2" = 1'-0"
HEAD



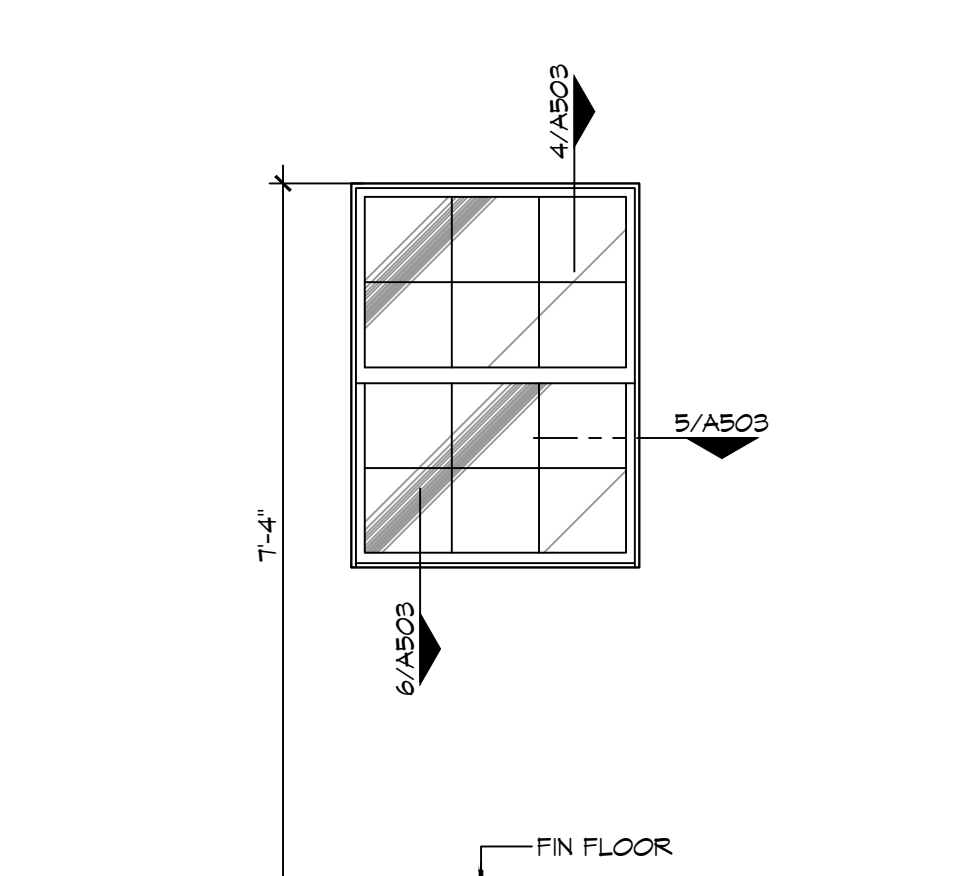
6 WINDOW DETAIL
SCALE: 1 1/2" = 1'-0"
SILL



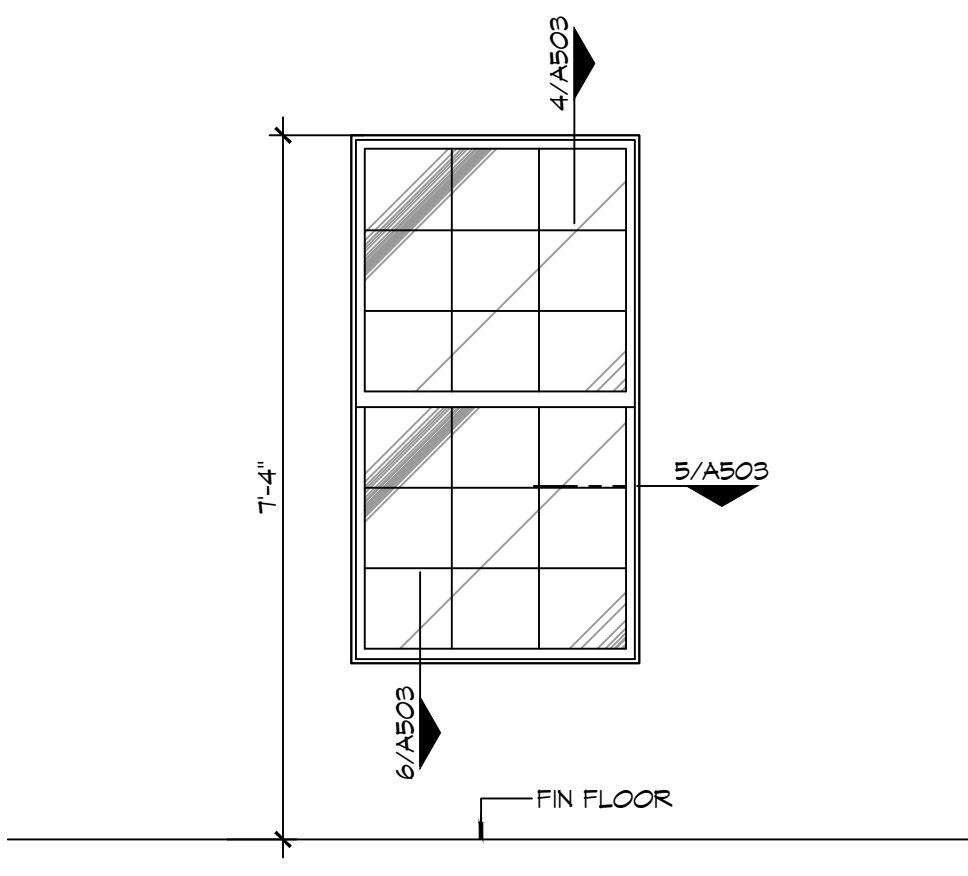
5 WINDOW DETAIL
SCALE: 1 1/2" = 1'-0"
JAMB



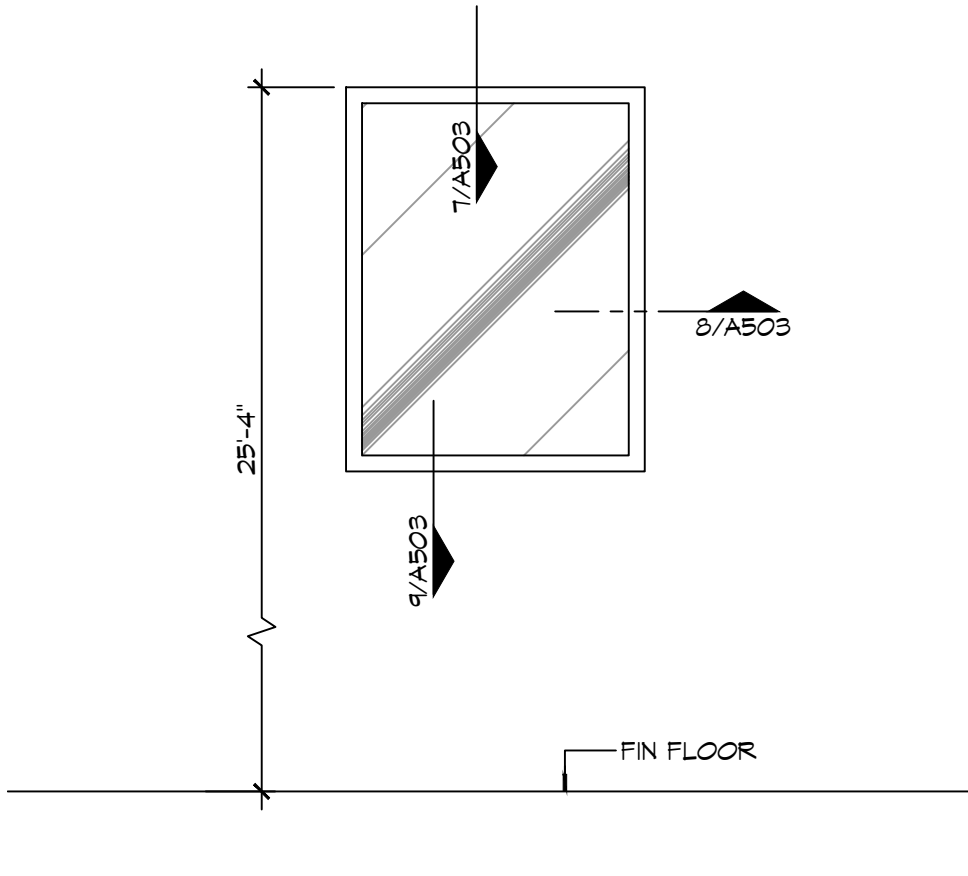
4 WINDOW DETAIL
SCALE: 1 1/2" = 1'-0"
HEAD



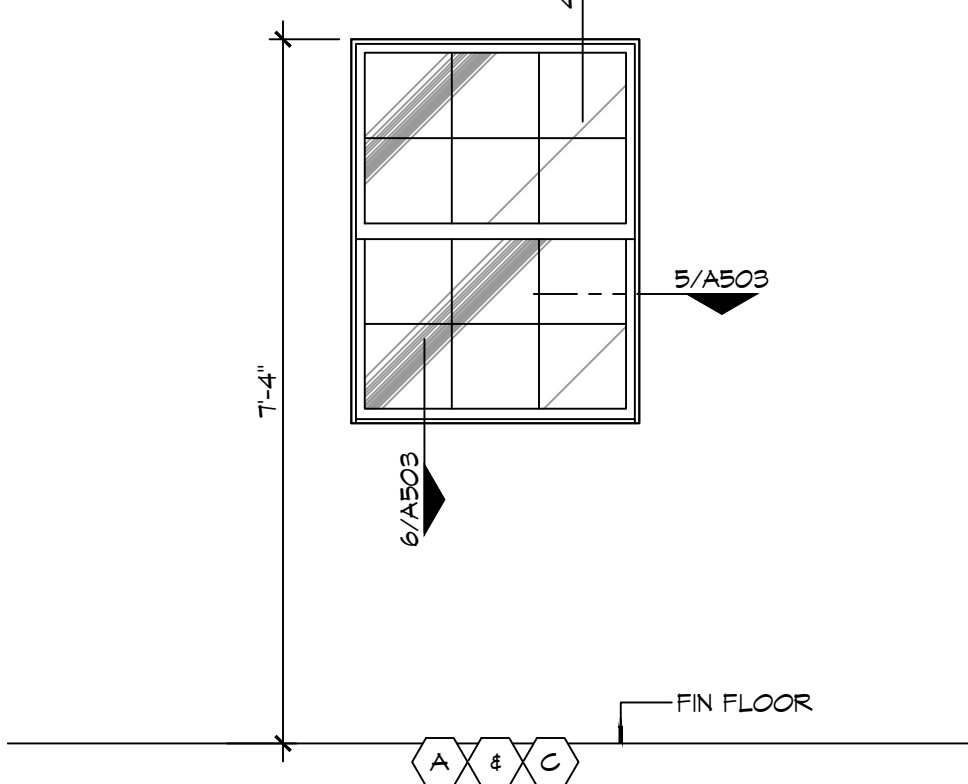
NOTE: OBSCURE/TRANSLUCENT GLASS FOR THIS WINDOW TYPE ONLY



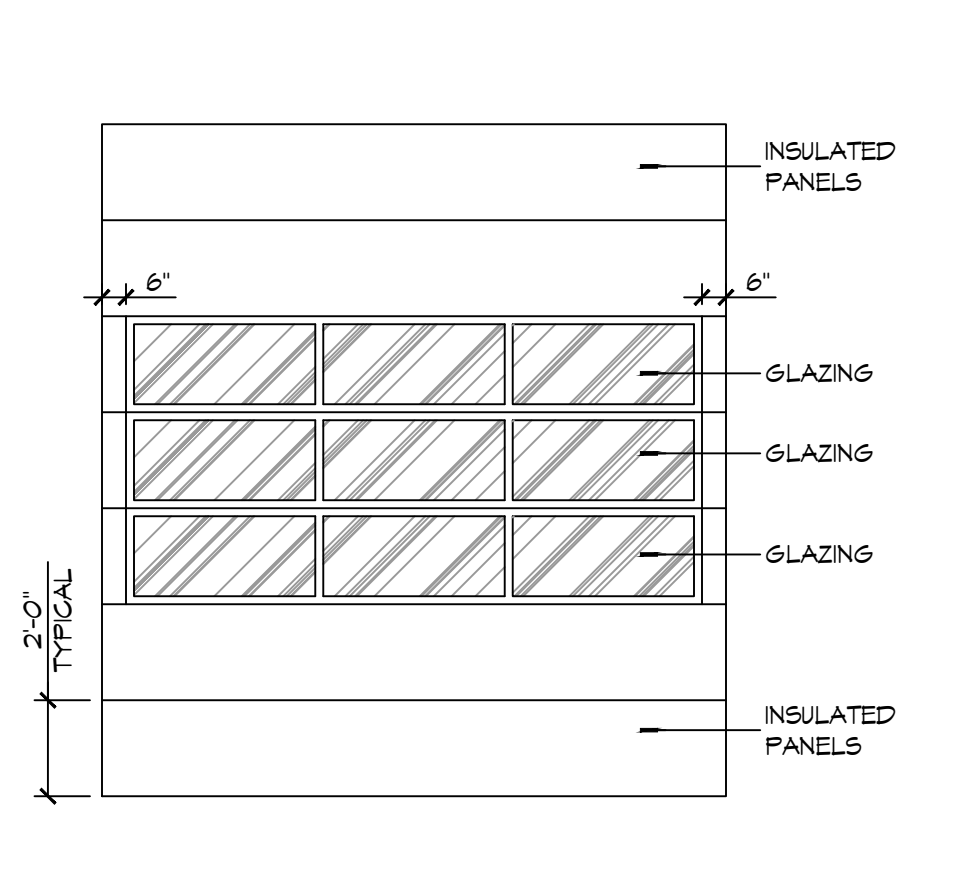
NOTE: OBSCURE/TRANSLUCENT GLASS FOR THIS WINDOW TYPE ONLY



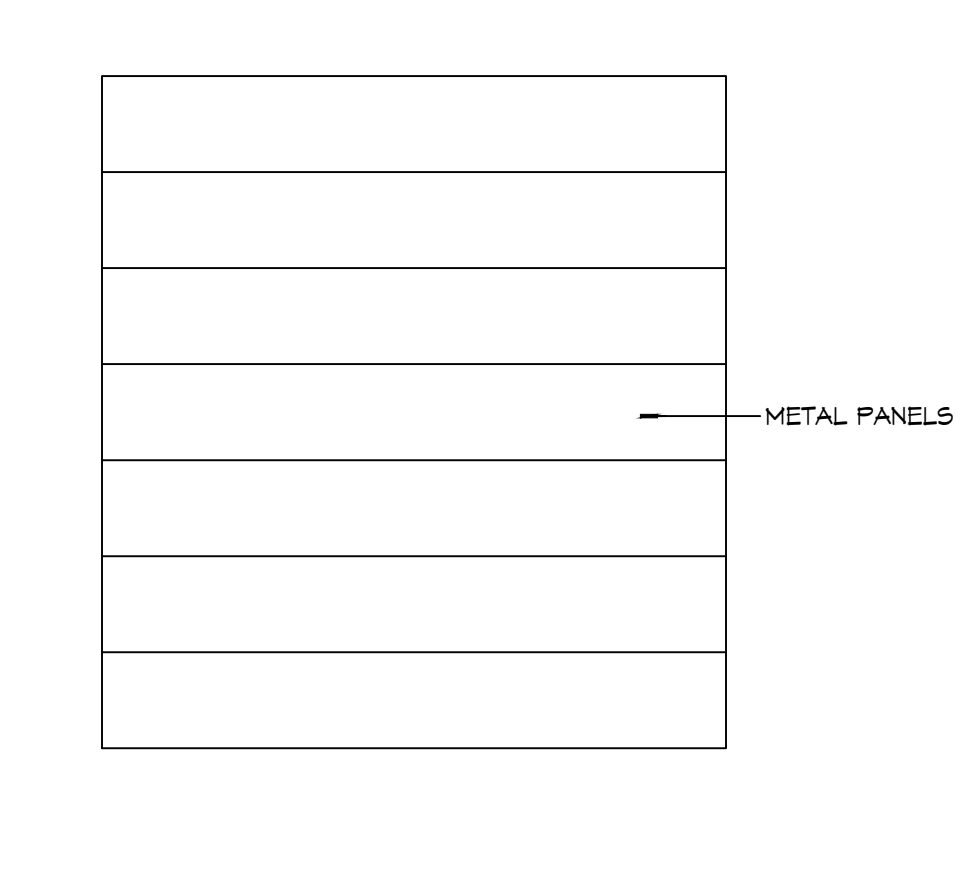
NOTE: OBSCURE/TRANSLUCENT GLASS FOR THIS WINDOW TYPE ONLY



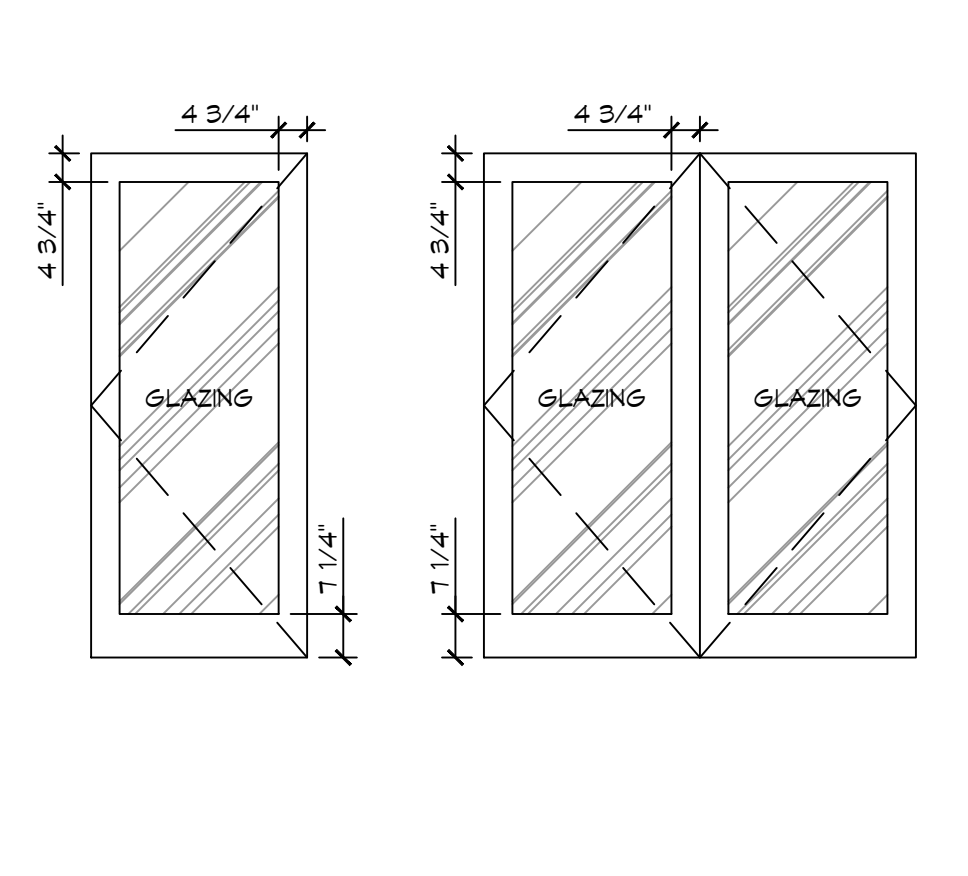
3 WINDOW TYPES
SCALE: 1/2" = 1'-0"



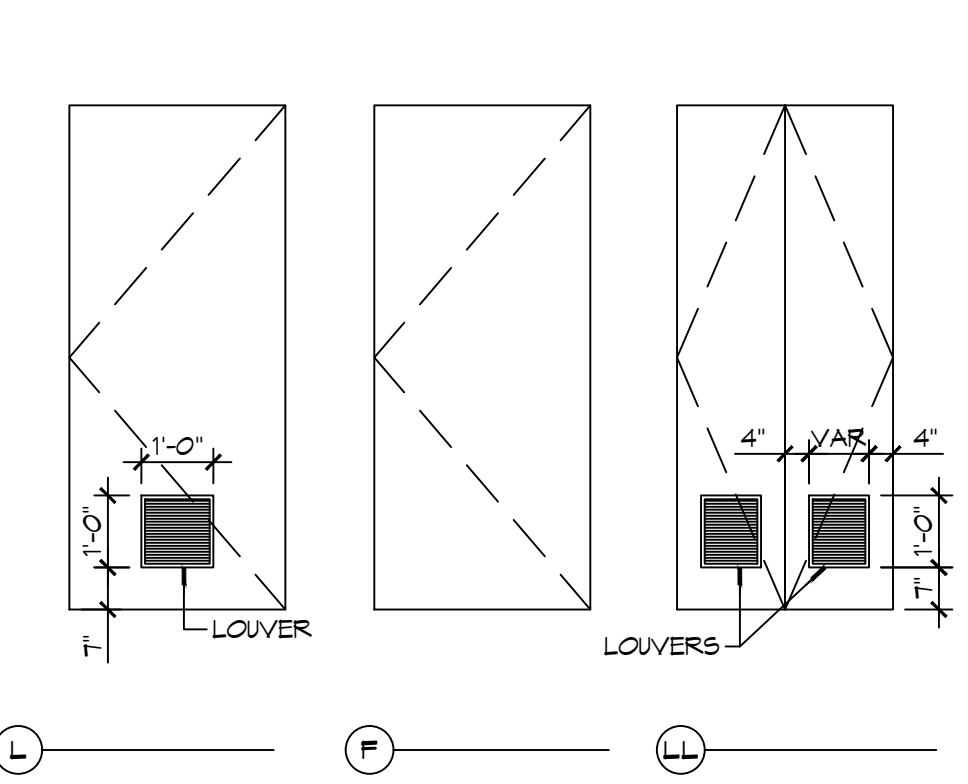
NOTE: OBSCURE/TRANSLUCENT GLASS FOR THIS WINDOW TYPE ONLY



NOTE: OBSCURE/TRANSLUCENT GLASS FOR THIS WINDOW TYPE ONLY



NOTE: OBSCURE/TRANSLUCENT GLASS FOR THIS WINDOW TYPE ONLY



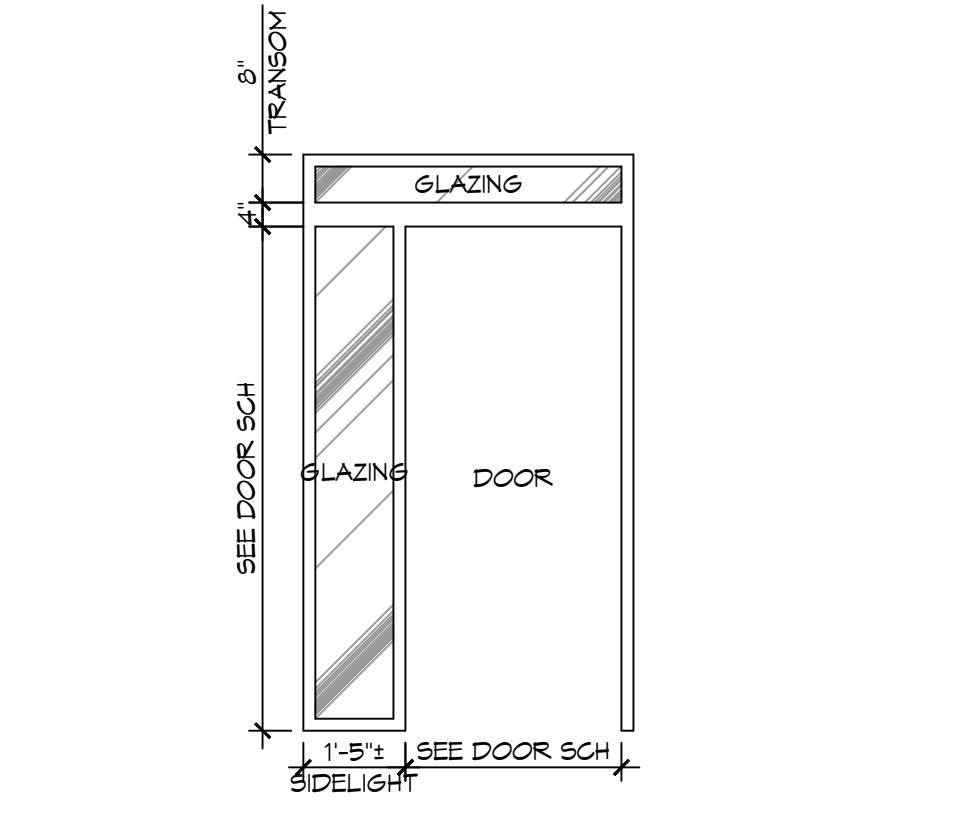
2 DOOR TYPES
SCALE: NTS

GENERAL OPENING SCHEDULE NOTES

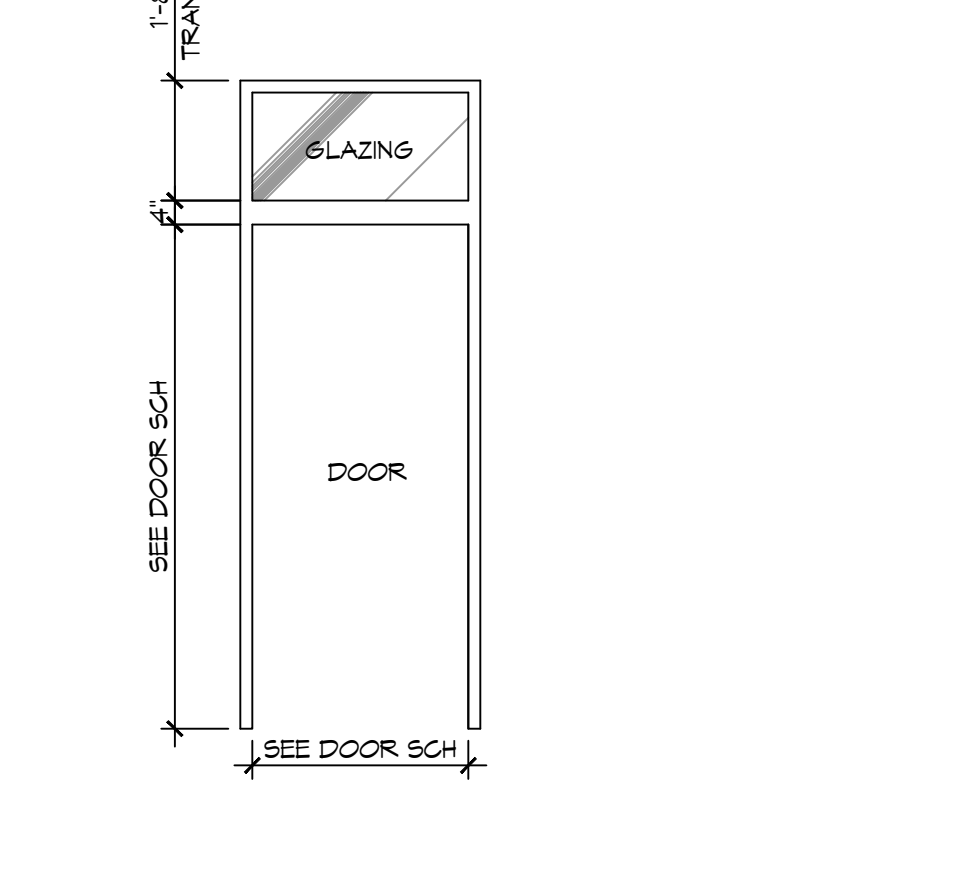
- CONTRACTOR SHALL VERIFY ROUGH OPENING DIMENSIONS WITH MANUFACTURER'S REQUIREMENTS PRIOR TO CONSTRUCTION.
- ALL EGRESS DOORS SHALL BE READILY OPENABLE FROM THE EGRESS SIDE WITHOUT THE USE OF A KEY OR SPECIAL KNOWLEDGE OR EFFORT.
- ALL DOORS NOT SPECIFIED TO RECEIVE A THRESHOLD SHALL HAVE A 3/4" UNDERCUT UNLESS NOTED OTHERWISE.
- DO NOT PAINT OVER FIRE-RATED LABELS, TAGS, EMBOSINGS, ETC. ON DOOR FRAMES OR DOORS.
- INSTALL WINDOWS, DOORS AND BRICK VENEER PER CODE.

DOOR NOTES

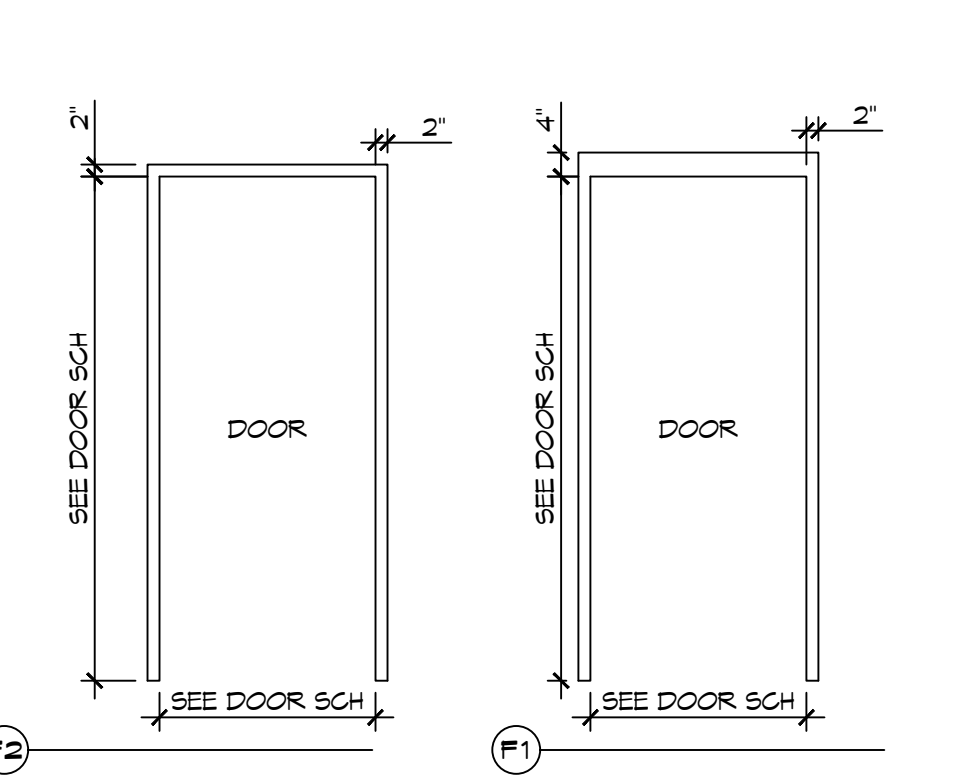
- DOOR WIDTH REFERS TO MASONRY OPENING - COORDINATE UNIT WIDTH WITH JAMB DETAIL AND MANUFACTURER'S REQUIREMENTS.
- PROVIDE 3/4" DOOR UNDERCUT AT ALL INTERIOR DOORS NOT EQUIPPED WITH A THRESHOLD OR SMOKE DOOR AND OR WHERE NOTED OTHERWISE.



NOTE: OBSCURE/TRANSLUCENT GLASS FOR THIS WINDOW TYPE ONLY



NOTE: OBSCURE/TRANSLUCENT GLASS FOR THIS WINDOW TYPE ONLY



1 FRAME TYPES
SCALE: NTS

DAMMON ENGINEERING, INC.
LOUISIANA & MISSISSIPPI
Chief Engineer: Brian Mistich, PE
554 Old Spanish Trail
Slidell, LA 70488
www.dammonengineering.com
info@dammonengineering.com
PH: 985.649.5832

#	DESCRIPTION	DATE
1	REVISED WINDOW SCHEDULE	1-25-26
2	GARAGE DOOR 14'x14'	02-19-26



**NEW FIRE STATION #10
ST. TAMMANY FIRE PROTECTION
DISTRICT NO. 1**

246 LAKESHORE VISTA BLVD
SLIDELL, LA 70461
JOB No: 2519 DATE: 1-16-2026
DRAWN BY: JMS CHECKED BY: GKD

SHEET TITLE:
DOOR AND WINDOW
SCHEDULES, DOOR,
WINDOW TYPES, & WINDOW
DETAILS

DRAWING NUMBER:
A503

SHEET No: 29 of 37