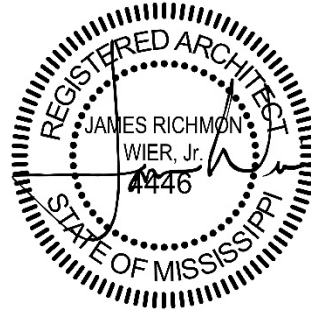


FEBRUARY 13, 2018

BULLETIN NO. 04

POSITIVE STEPS FERTILITY

149 Fountains Blvd.
Madison, MS
WBA Project No. 2217



NOTICE TO ALL DOCUMENT HOLDERS:

The following additions, deletions, changes and clarifications to the drawings and specifications are to be included as part of the Contract Documents.

The user has requested to place mini-split and server located in Mechanical Mezzanine to be placed on the emergency generator. See enclosed revised drawings.

ELECTRICAL

- ITEM NO. 1** **E0.2 Electrical Details**
 E2.0 Power Plan
 E3.0 Mechanical/ Auxiliary Plan
 Revise per the enclosed sketches E.SK01 & ESK02.

NO MORE ITEMS

Please provide a detailed proposal if this work requires an adjustment in the Contract Sum or Contract Time.

Encl: Sketches E.SK01 & E.SK02.

cc: Paula DeYoung
 Bobby Edens
 Jamie Wier
 Sully Clemmer
 Wade Thompson
 File 2217.D6/Bulletins

2727 OLD CANTON ROAD,
SUITE 200
JACKSON, MISSISSIPPI 39216
P:601.321.9107
F:601.321.9108

**POSITIVE STEPS
FERTILITY, DR. J.
PRESTON PARRY**

OWNER/DEVELOPER: DIANA
FOUNTAINS, LLC
OWNER CONSULTANT:
EVERETT CONSULTING GROUP,
LLC
GENERAL CONTRACTOR:
PROBITY CONTRACTING
GROUP, LLC

FEBRUARY 09, 2018

CONSTRUCTION DOCUMENTS

WBA #: 2217

REVISIONS

NO.	DESCRIPTION	DATE
-----	-------------	------

E.SK01

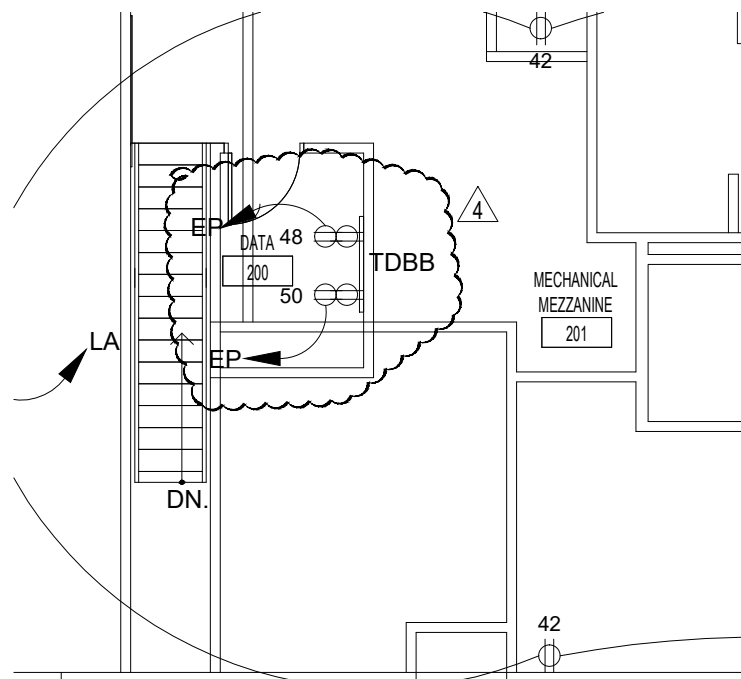
BULLETIN 4

MECHANICAL EQUIPMENT CONNECTIONS SCHEDULE

MARK	VOLTAGE	PANEL	CIRCUITRY	LOCAL DISCONNECT	REMARKS
AHU-01	208V, 3Ø	EP	3#12, #12(G), 1/2"C.	30/3/1	
CU-01	208V, 1Ø	MA	2#8, #10(G), 3/4"C.	60/2/3R	
CU-02	208V, 1Ø	MA	2#10, #10(G), 3/4"C.	30/2/3R	
CU-03	208V, 1Ø	MA	2#8, #10(G), 3/4"C.	60/2/3R	
CU-04	208V, 1Ø	MA	2#12, #12(G), 1/2"C.	30/2/3R	
CU-05	208V, 1Ø	MA	2#8, #10(G), 3/4"C.	60/2/3R	
CU-06	208V, 1Ø	MA	2#10, #10(G), 3/4"C.	30/2/3R	
CU-07a	208V, 1Ø	EP	2#10, #10(G), 3/4"C.	30/2/3R	
CU-07b	208V, 1Ø	EP	2#10, #10(G), 3/4"C.	30/2/3R	
DCU-01	208V, 1Ø	EP	2#12, #12(G), 1/2"C.	30/2/3R	INTERLOCKED WITH DSS-01
DSS-01	208V, 1Ø	EP	2#12, #12(G), 1/2"C.	TWO POLE SWITCH (\$ ^{2P})	INTERLOCKED WITH DCU-01
F/E-01	120V, 1Ø	LB	2#10, #10(G), 3/4"C.	MOTOR RATED SWITCH (\$ ^T)	
F/E-02	120V, 1Ø	LB	2#10, #10(G), 3/4"C.	MOTOR RATED SWITCH (\$ ^T)	
F/E-03	120V, 1Ø	LB	2#10, #10(G), 3/4"C.	MOTOR RATED SWITCH (\$ ^T)	
F/E-04	120V, 1Ø	LB	2#12, #12(G), 1/2"C.	MOTOR RATED SWITCH (\$ ^T)	
F/E-05	120V, 1Ø	LB	2#10, #10(G), 3/4"C.	MOTOR RATED SWITCH (\$ ^T)	
F/E-06	120V, 1Ø	LB	2#10, #10(G), 3/4"C.	MOTOR RATED SWITCH (\$ ^T)	
DH-01	120V, 1Ø	LB	2#12, #12(G), 1/2"C.	NEMA 5-20R	
DH-02	120V, 1Ø	LB	2#12, #12(G), 1/2"C.	NEMA 5-20R	
DH-03	120V, 1Ø	LB	2#12, #12(G), 1/2"C.	NEMA 5-20R	
DH-04	120V, 1Ø	LB	2#12, #12(G), 1/2"C.	NEMA 5-20R	
DH-05	120V, 1Ø	LB	2#12, #12(G), 1/2"C.	NEMA 5-20R	
DH-06	120V, 1Ø	LB	2#12, #12(G), 1/2"C.	NEMA 5-20R	
EWH-01	208V, 1Ø	MA	2#12, #12(G), 1/2"C.	TWO POLE SWITCH (\$ ^{2P})	
EF-01	120V, 1Ø	LA	2#12, #12(G), 1/2"C.	PROVIDED WITH EQUIPMENT	INTERLOCKED WITH LIGHTS
EF-02	120V, 1Ø	LA	2#12, #12(G), 1/2"C.	PROVIDED WITH EQUIPMENT	INTERLOCKED WITH LIGHTS
EF-03	120V, 1Ø	LA	2#12, #12(G), 1/2"C.	PROVIDED WITH EQUIPMENT	INTERLOCKED WITH LIGHTS
EF-04	120V, 1Ø	LA	2#12, #12(G), 1/2"C.	PROVIDED WITH EQUIPMENT	INTERLOCKED WITH LIGHTS
EF-05	120V, 1Ø	EP	2#12, #12(G), 1/2"C.	PROVIDED WITH EQUIPMENT	INTERLOCKED WITH AHU-01
EF-06	120V, 1Ø	EP	2#12, #12(G), 1/2"C.	PROVIDED WITH EQUIPMENT	INTERLOCKED WITH AHU-01
EF-07	120V, 1Ø	LB	2#12, #12(G), 1/2"C.	PROVIDED WITH EQUIPMENT	INTERLOCKED WITH EMS SYSTEM
FH-01	208V, 1Ø	EP	2#12, #12(G), 1/2"C.	TWO POLE SWITCH (\$ ^{2P})	INTERLOCKED WITH EMS SYSTEM
EDH-01	208V, 1Ø	EP	2#1, #6(G), 1-1/4"C.	100/2/1	
CP-01	120V, 1Ø	LB	2#12, #12(G), 1/2"C.	30/1/1	
WH-01	120V, 1Ø	LB	2#12, #12(G), 1/2"C.	5-20R	

General Note 1: Prior to submitting electrical equipment brochures, the Contractor shall verify location, actual equipment submittal data and adjust equipment services accordingly.

Note A: Cord and Plug provided by mechanical contractor and installed by electrical contractor.



REFERENCE SHEET E2.0

Scale: 1/8" = 1'-0"

WIER BOERNER ALLIN ARCHITECTURE

2727 OLD CANTON ROAD,
SUITE 200
JACKSON, MISSISSIPPI 39216
P:601.321.9107
F:601.321.9108

POSITIVE STEPS FERTILITY, DR. J. PRESTON PARRY

OWNER/DEVELOPER: DIANA
FOUNTAINS, LLC
OWNER CONSULTANT:
EVERETT CONSULTING GROUP,
LLC
GENERAL CONTRACTOR:
PROBITY CONTRACTING
GROUP, LLC

FEBRUARY 09, 2018

CONSTRUCTION DOCUMENTS

WBA #: 2217

REVISIONS

NO.	DESCRIPTION	DATE

E.SK02

BULLETIN 4

PANEL		LOCATION: ELECTRICAL ROOM 116		LUG LOCATION: BOTTOM FEED		MAIN LUGS ONLY		SURFACE		PANELBOARD AIC RATING (A): 10,000		
LA		VOLT: 208Y/120V, 3Ø, 4W		MAIN BUS: MOUNTING:		SURFACE		SURFACE		SURFACE		
CIRCUIT NO.	BREAKER	AMPS	POLES	DESCRIPTION	PHASE LOAD (KVA)			DESCRIPTION	BREAKER	CIRCUIT NO.		
					A	B	C					
1	20	1	1	LTS. (ELEC. OFFICE, STO. DIRTY UTILITY, CONSULT)	1.1	0.2		REC. (CONFERENCE/BREAK)	20	1	2	
3	20	1	1	LTS. (CORR. VITALS, PHLEBOTOMY)		1.1	0.8	REC. (CONFERENCE/BREAK - REF.)	20	1	4	
5	20	1	1	LTS. (WAITING, RECEPT, RR OFFICE, CONSULT)			0.8	0.7	REC. (CONFERENCE/BREAK, COLL., PHLEB.)	20	1	6
7	20	1	1	LTS. (OFFICE, CONSULT)	0.7	0.4			REC. - (NURSE STATION)	20	1	8
9	20	1	1	LTS. (EXAM RMS, RR.)		1.4	0.4		REC. - (NURSE STATION)	20	1	10
11	20	1	1	REC. (WAITING - COFFEE MAKER)			1.0	0.4	REC. - (NURSE STATION)	20	1	12
13	20	1	1	REC. (ELEC. DIRTY UTILITY, CORR)	1.4	0.2			REC. - (NURSE STATION)	20	1	14
15	20	1	1	REC. (OFFICE)		1.1	0.2		REC. - (NURSE STATION)	20	1	16
17	20	1	1	REC. (OFFICE)			1.4	1.1	REC. - (EXAM 3)	20	1	18
19	20	1	1	REC. (DIRTY UTILITY)	0.5	0.7			REC. - (EXAM 4)	20	1	20
21	20	1	1	REC. (CONSULT)		0.7	0.7		REC. - (PATIENT RR, PATIENT RR, CORR.)	20	1	22
23	20	1	1	REC. (STAFF RR, FINANCIAL COUNSELING)			1.1	0.9	REC. - (EXAM 5)	20	1	24
25	20	1	1	REC. (RECEPTION)	1.1	0.2			REC. - (VITALS)	20	1	26
27	20	1	1	REC. (WAITING)		0.9	0.2		REC. - (VITALS)	20	1	28
29	20	1	1	REC.			0.2	0.2	REC. - (VITALS)	20	1	30
31	20	1	1	REC.	0.2	0.2			REC. - (VITALS)	20	1	32
33	20	1	1	REC. (DR. PERRY'S OFFICE)		1.3	0.9		REC. - (EXAM 1)	20	1	34
35	20	1	1	REC. (DR. PERRY'S OFFICE)			1.4	0.9	REC. - (EXAM 2)	20	1	36
37	20	1	1	REC. (NURSING OFFICE)	1.0	0.0			SPARE	20	1	38
39	20	1	1	REC. (NURSING OFFICE)		0.7	0.0		SPARE	20	1	40
41	20	1	1	REC. (NURSING OFFICE)			0.7	0.9	REC. - (MECHANICAL MEZZANINE)	20	1	42
43	20	1	1	REC. (CONSULT)	1.4	2.5			PROVISIONS FOR SPLIT SYSTEM	30	2	44
45	20	1	1	REC. (OFFICE, CORR)		1.1	2.5		-	-	46	
47	20	1	1	REC. (CLEAN UTILITY)			1.1	0.8	REC. (PRIMARY LAB - REF)	20	1	48
49	20	1	1	REC. (COLLECTION, CONF./BREAK, CORR.)	0.7	0.2			REC. (EXTERIOR POLE)	20	1	50
51	20	1	1	REC. (CONFERENCE/BREAK - DISHWASHER)		1.4	0.2		REC. (EXTERIOR POLE)	20	1	52
53	20	1	1	REC. (CONFERENCE/BREAK)			0.4	1.7	CONFERENCE/BREAK 108 - DISPOSAL	25	1	54
TOTAL					12.7	15.4	15.6		* GFCI BREAKER			

PANEL		LOCATION: ELECTRICAL ROOM 116		LUG LOCATION: BOTTOM FEED		MAIN LUGS ONLY		SURFACE		PANELBOARD AIC RATING (A): 10,000		
LB		VOLT: 208Y/120V, 3Ø, 4W		MAIN BUS: MOUNTING:		SURFACE		SURFACE		SURFACE		
CIRCUIT NO.	BREAKER	AMPS	POLES	DESCRIPTION	PHASE LOAD (KVA)			DESCRIPTION	BREAKER	CIRCUIT NO.		
					A	B	C					
1	20	1	1	MECHANICAL MEZZANINE - WH-01	1.0	0.8		LTS. (PARKING LOT)	20	1	2	
3	15	1	1	MECHANICAL MEZZANINE - CP-01		0.5	0.1		LTS. (EXTERIOR)	20	1	4
5	20	1	1	DISPOSAL (BREAK ROOM)			1.7	0.4	REC. (ADVANCED LAB)	20	1	6
7	15	1	1	EF-07	0.7	0.4			REC. (ADVANCED LAB)	20	1	8
9	20	2	2	EW-01		1.5	1.1		REC. (WAITING, EXTERIOR)	20	1	10
13	20	1	1	SPARE	0.0	1.4			REC. (OFFICE)	20	1	14
15	20	1	1	SPARE		0.0	0.0		SPARE	20	1	16
17	20	1	1	PROVISIONS FOR UV LIGHT ON AHU-01			0.1	0.0	SPARE	20	1	18
19	30	1	1	F/E-01	1.9	0.0			SPARE	20	1	20
21	25	1	1	F/E-02		1.7	0.0		SPARE	20	1	22
23	30	1	1	F/E-03			1.9	0.0	SPARE	20	1	24
25	20	1	1	F/E-04	1.2	0.0			SPARE	20	1	26
27	30	1	1	F/E-05		1.9	0.0		SPARE	20	1	28
29	25	1	1	F/E-06			1.7	0.0	SPARE	20	1	30
31	20	1	1	DH-01	1.0	0.0			SPARE	20	1	32
33	20	1	1	DH-02		1.0	0.0		SPARE	20	1	34
35	20	1	1	DH-03			1.0	0.0	SPARE	20	1	36
37	20	1	1	DH-04	0.6	0.0			SPARE	20	1	38
39	20	1	1	DH-05			1.0	0.0	SPARE	20	1	40
41	20	1	1	DH-06			1.0	0.0	SPARE	20	1	42
43	20	1	1	SPARE	0.0	0.0			SPARE	20	1	44
45	20	1	1	SPARE		0.0	0.0		SPARE	20	1	46
47	20	1	1	SPARE			0.0	0.0	SPARE	20	1	48
49	20	1	1	SPARE	0.0	0.0			SPARE	20	1	50
51	20	1	1	SPARE			0.0	0.0	SPARE	20	1	52
53	20	1	1	SPARE			0.0	0.0	SPARE	20	1	54
TOTAL					8.9	8.7	10.6					

PANEL		LOCATION: ELECTRICAL ROOM 116		LUG LOCATION: BOTTOM FEED		MAIN LUGS ONLY W/FEEED THRU LUGS		SURFACE		PANELBOARD AIC RATING (A): 10,000		
EP - SEC. 1		VOLT: 208Y/120V, 3Ø, 4W		MAIN BUS: MOUNTING:		SURFACE		SURFACE		SURFACE		
CIRCUIT NO.	BREAKER	AMPS	POLES	DESCRIPTION	PHASE LOAD (KVA)			DESCRIPTION	BREAKER	CIRCUIT NO.		
					A	B	C					
1	20	1	1	MEDICAL GAS ALARM PANEL	0.3	0.3		FACP	20	1	2	
3	20	3	3	AHU-1		1.9	0.3		CONTACTOR "C1"	20	1	4
5	-	-	-	-			1.9	1.7	LTS. (PRIMARY LAB)	20	1	6
7	-	-	-	-	1.9	1.2			LTS. (ADVANCED LAB)	20	1	8
9	20	2	2	FH-01		1.5	0.1		EF-05	15	1	10
11	-	-	-	-			1.5	0.7	EF-06	15	1	12
13	20	1	1	MEDICAL GAS ALARM PANEL	0.5	0.8			REC. (PRIMARY LAB - REF)	20	1	14
15	20	1	1	REC. (GAS TANKS)		0.2	0.9		LTS. (ADVANCED PROCEDURE)	20	1	16
17	25	2	2	CU-07b			1.4	0.4	REC. (LIQUID N2 STOR.)	20	1	18
19	-	-	-	-	1.4	0.5			PATIENT TABLE (PROCEDURE)	20	1	20
21	20	1	1	REC. (LIQUID N2 STOR.)		0.4	0.5		NIKON MICROSCOPE (ADVANCED LAB)	20	1	22
23	20	1	1	PROVISIONS FOR UV LIGHT ON AHU-01			0.5	0.5	OLYMPUS MICROSCOPE (ADVANCED LAB)	20	1	24
25	20	1	1	REC. (PRIMARY LAB)	0.4	0.5			FULL SIZE INCUBATOR (ADVANCED LAB)	20	1	26
27	20	1	1	REC. (PRIMARY LAB)		0.4	0.5		6' WORK STATION (ADVANCED LAB)	20	1	28
29	20	1	1	REC. (PRIMARY LAB)			0.4	0.5	4' WORK STATION (ADVANCED LAB)	20	1	30
31	20	1	1	REC. (PRIMARY LAB)	0.4	0.5			4' WORK STATION (ADVANCED LAB)	20	1	32
33	20	1	1	REC. (PRIMARY LAB)		0.4	0.5		MNC BENCHTOP INCUBATOR (ADVANCED LAB)	20	1	34
35	20	1	1	REC. FLOOR BOX (PRIMARY LAB)			0.7	0.5	MNC BENCHTOP INCUBATOR (ADVANCED LAB)	20	1	36
37	20	1	1	REC. (PRIMARY LAB)	0.5	0.5			MNC BENCHTOP INCUBATOR (ADVANCED LAB)	20	1	38
39	20	1	1	REC. (PROCEDURE)		0.5	1.4		CU-07a	25	2	40
41	20	1	1	REC. ULTRASOUND (PROCEDURE)			0.5	1.4				42
43	100	2	2	EDH-01	7.5	1.0			DCU-01 & DSS-01	20	2	44
45	-	-	-	-		7.5	1.0		-	-	46	
47	20	1	1	FIRE ALARM BELL			0.5	0.4	REC. (DATA ROOM)	20	1	48
49	20	1	1	REC. (ADVANCED PROCEDURE ROOM)	0.7	0.4			REC. (DATA ROOM)	20	1	50
51	20	1	1	REC. (ADVANCED LAB)		0.4	0.0		SPARE	20	1	52
53	20	1	1	MNC BENCHTOP INCUBATOR (ADVANCED LAB)			0.4	0.0	SPARE	20	1	54
TOTAL					19.2	18.3	13.8					