

WIER BOERNER ALLIN
ARCHITECTURE

2727 OLD CANTON RD, SUITE 200
JACKSON, MISSISSIPPI 39216

P:601.321.9107 F:601.321.9108

045 MADISON AVE.
MADISON, MS 39110
VOICE (601) 605-4820
FAX (601) 605-4875
TPS PROJ. # 17106

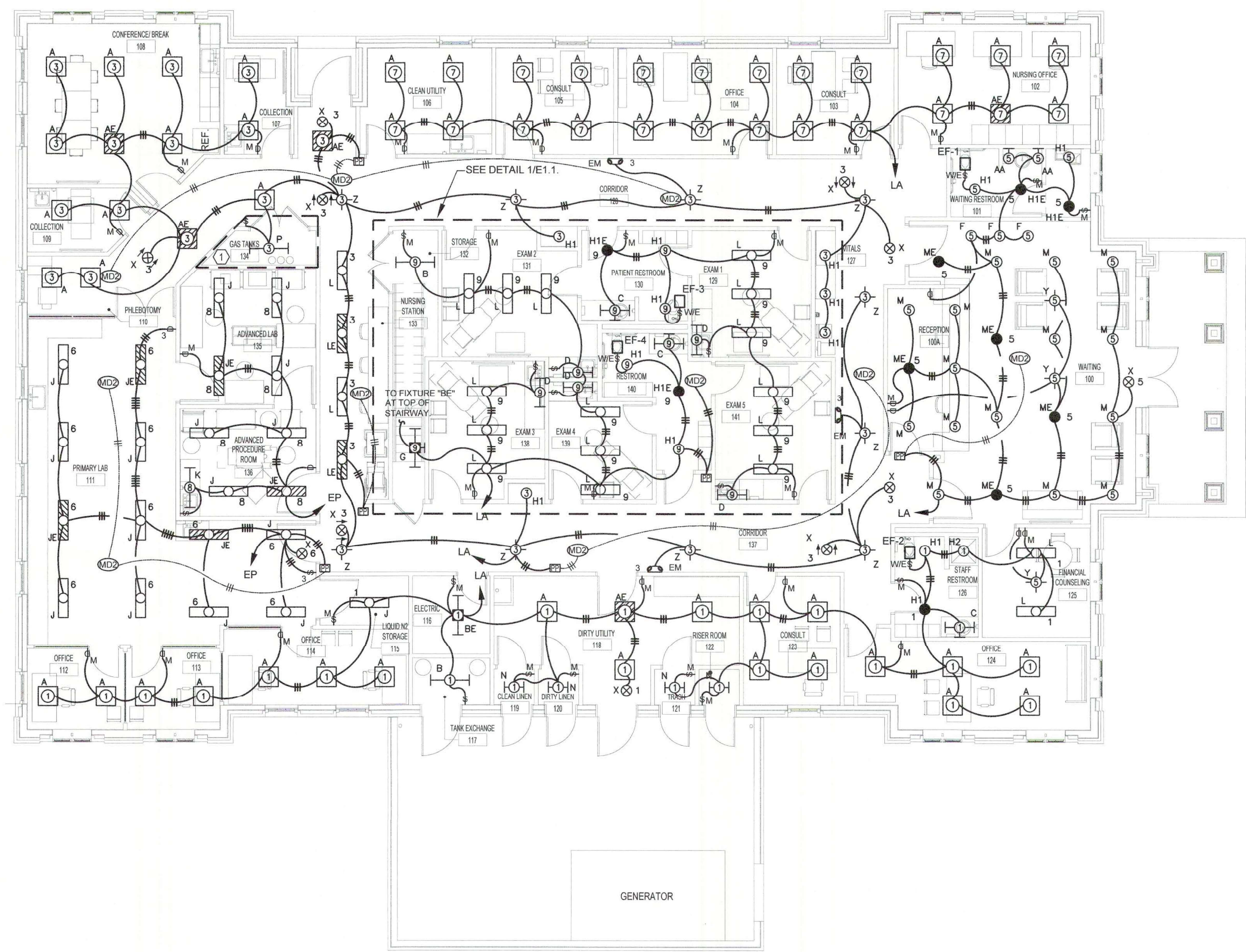


**FOUNTAINS
DOCTOR'S OFFICE**

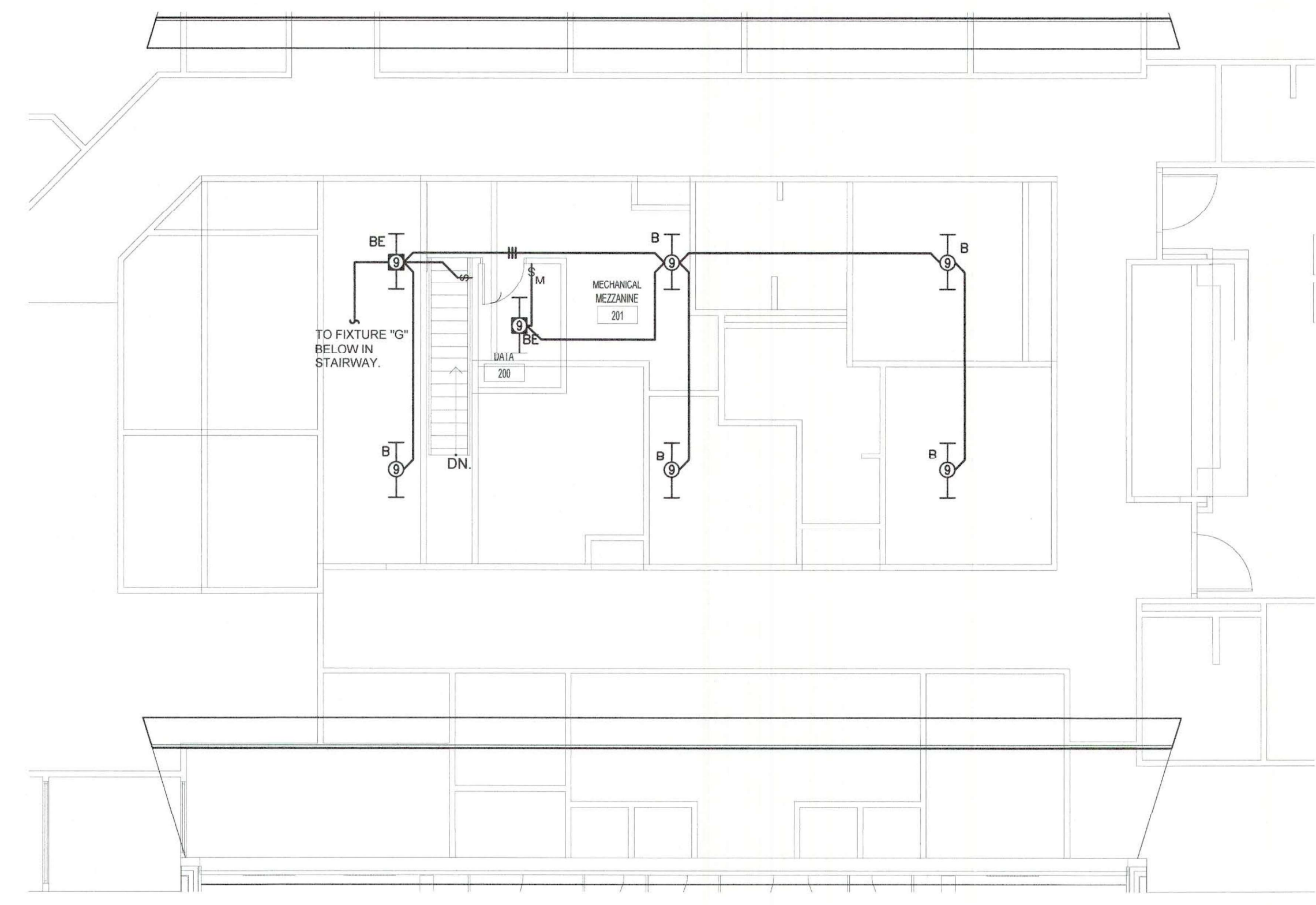
GENERAL CONTRACTOR:
PROBITY

FOUNTAINS BLVD.
MADISON, MS 39110

Mark	Description
①	USE GRS CONDUITS AND PROVIDE EXPLOSION PROOF FITTINGS FOR ALL CONNECTIONS IN GAS TANK STORAGE 134.



① LIGHTING PLAN
E1.0 Scale: 1/8" = 1'-0"



② LIGHTING PLAN - MEZZANINE
E1.0 Scale: 1/8" = 1'-0"

SEPTEMBER 29, 2017
CONSTRUCTION DOCUMENTS
WBA #: 2217

REVISIONS		
NO.	DESCRIPTION	DATE

E1.0
LIGHTING PLAN



945 MADISON AVE.
MADISON, MS 39110
VOICE (601) 605-4820
FAX (601) 605-4875
TPS PROJ. # 17105



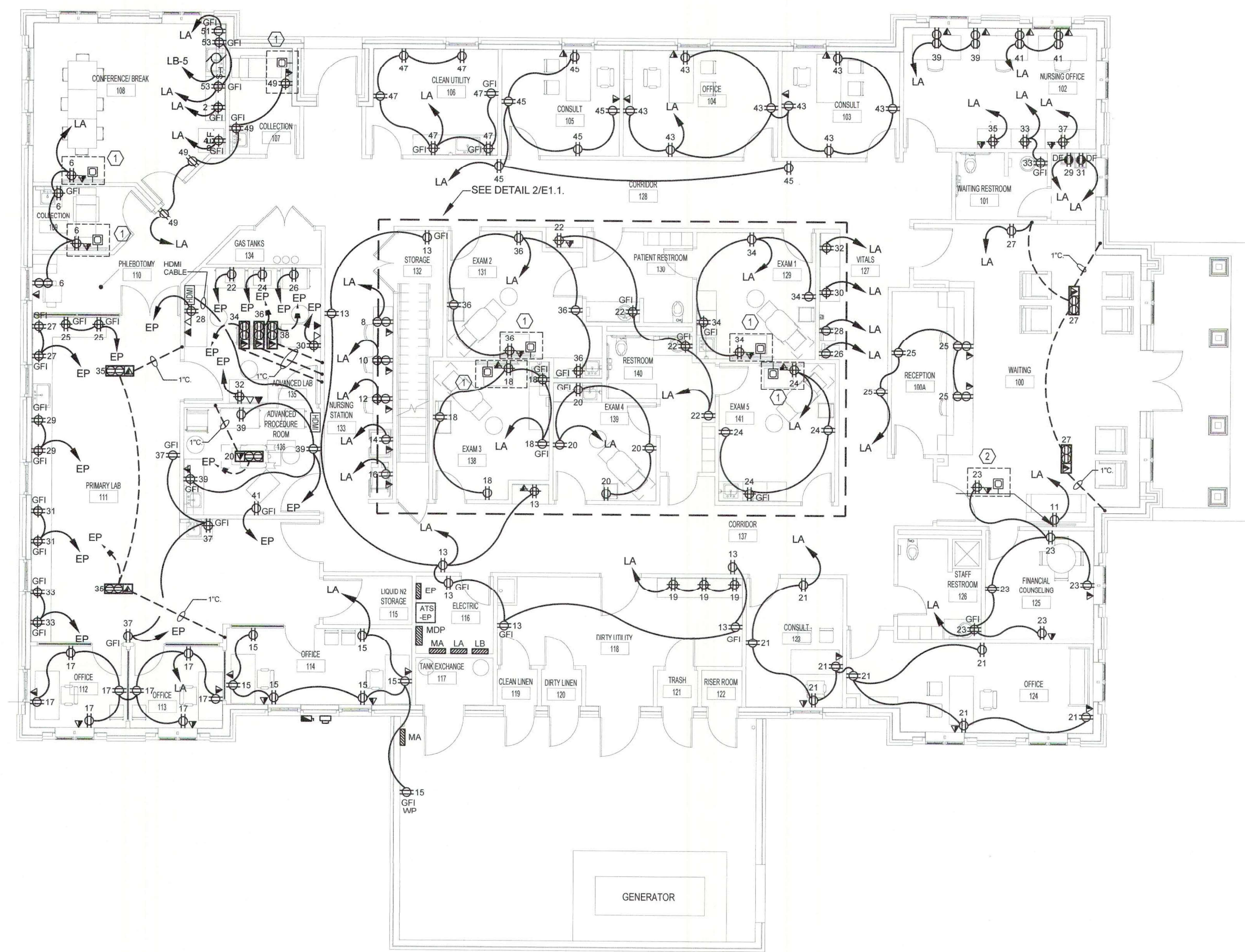
FOUNTAINS
DOCTOR'S OFFICE

GENERAL CONTRACTOR:
PROBITY

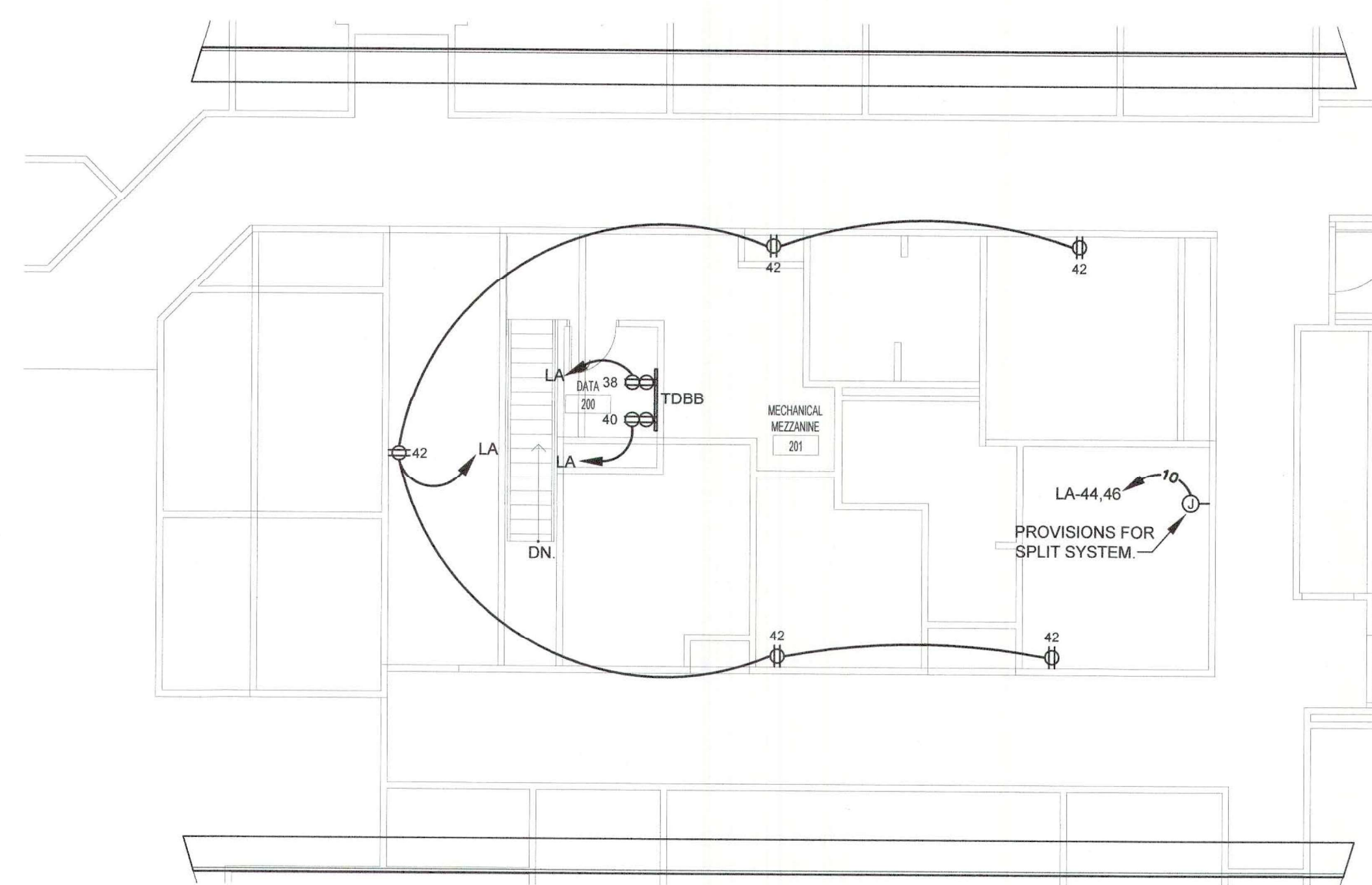
FOUNTAINS BLVD.
MADISON, MS 39110

GENERAL NOTES	
Mark	Description
A.	INDIVIDUAL UPS FOR LAB EQUIPMENT PROVIDED BY OTHERS.

KEYED NOTES	
Mark	Description
①	VERIFY MOUNTING WITH ARCHITECT PRIOR TO ROUGH-IN.
②	MOUNT 60" A.F.F.



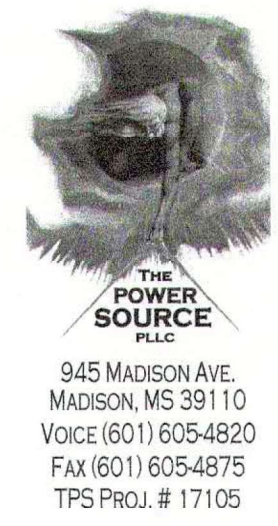
① **POWER PLAN**
E2.0 Scale: 1/8" = 1'-0"



② **POWER PLAN - MEZZANINE**
E2.0 Scale: 1/8" = 1'-0"

SEPTEMBER 29, 2017
CONSTRUCTION DOCUMENTS
WBA #: 2217

REVISIONS		
NO.	DESCRIPTION	DATE



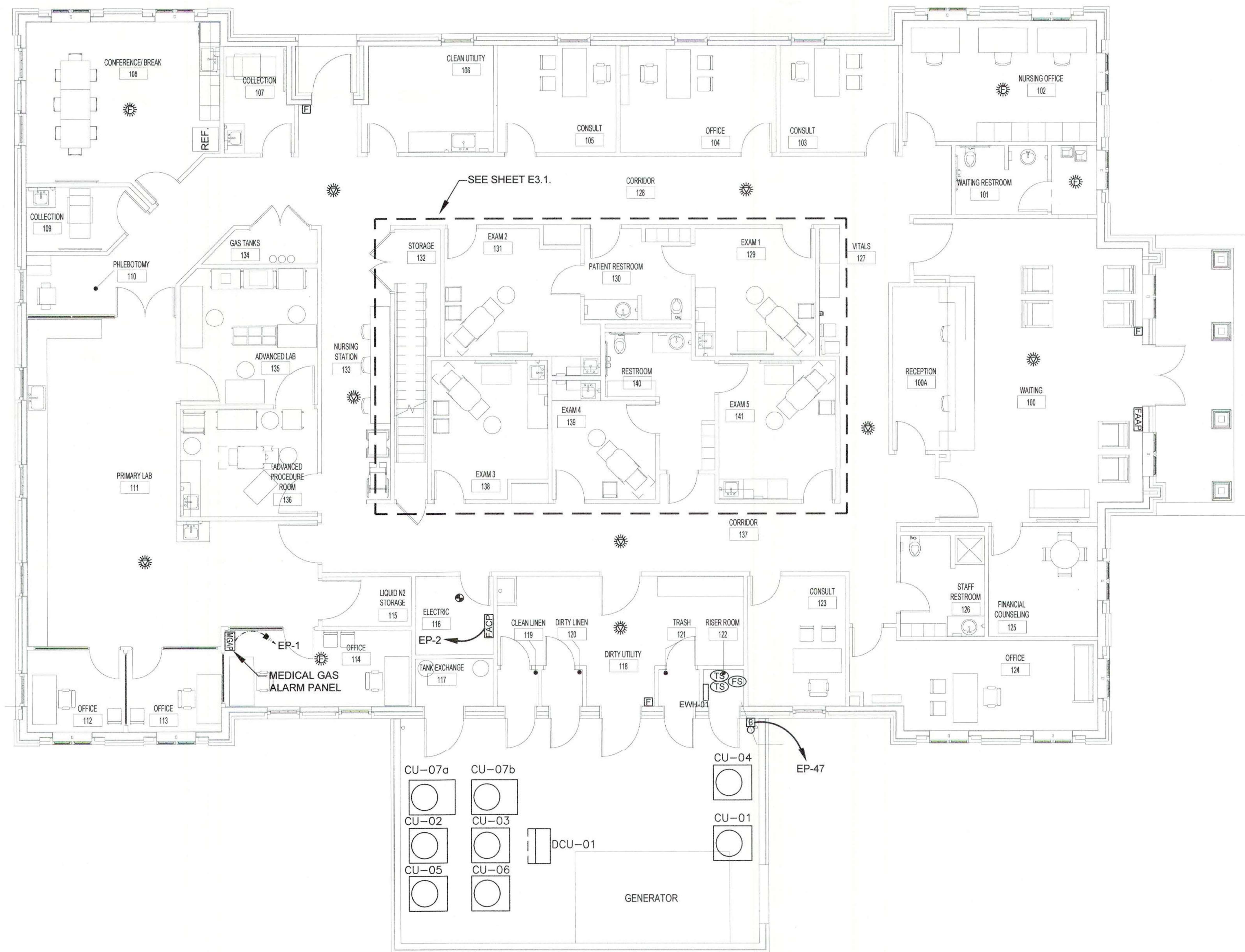
THE POWER SOURCE
PLLC
945 MADISON AVE.
MADISON, MS 39110
VOICE (601) 605-4820
FAX (601) 605-4675
TPS PROJ. # 17105



FOUNTAINS DOCTOR'S OFFICE

GENERAL CONTRACTOR:
PROBITY

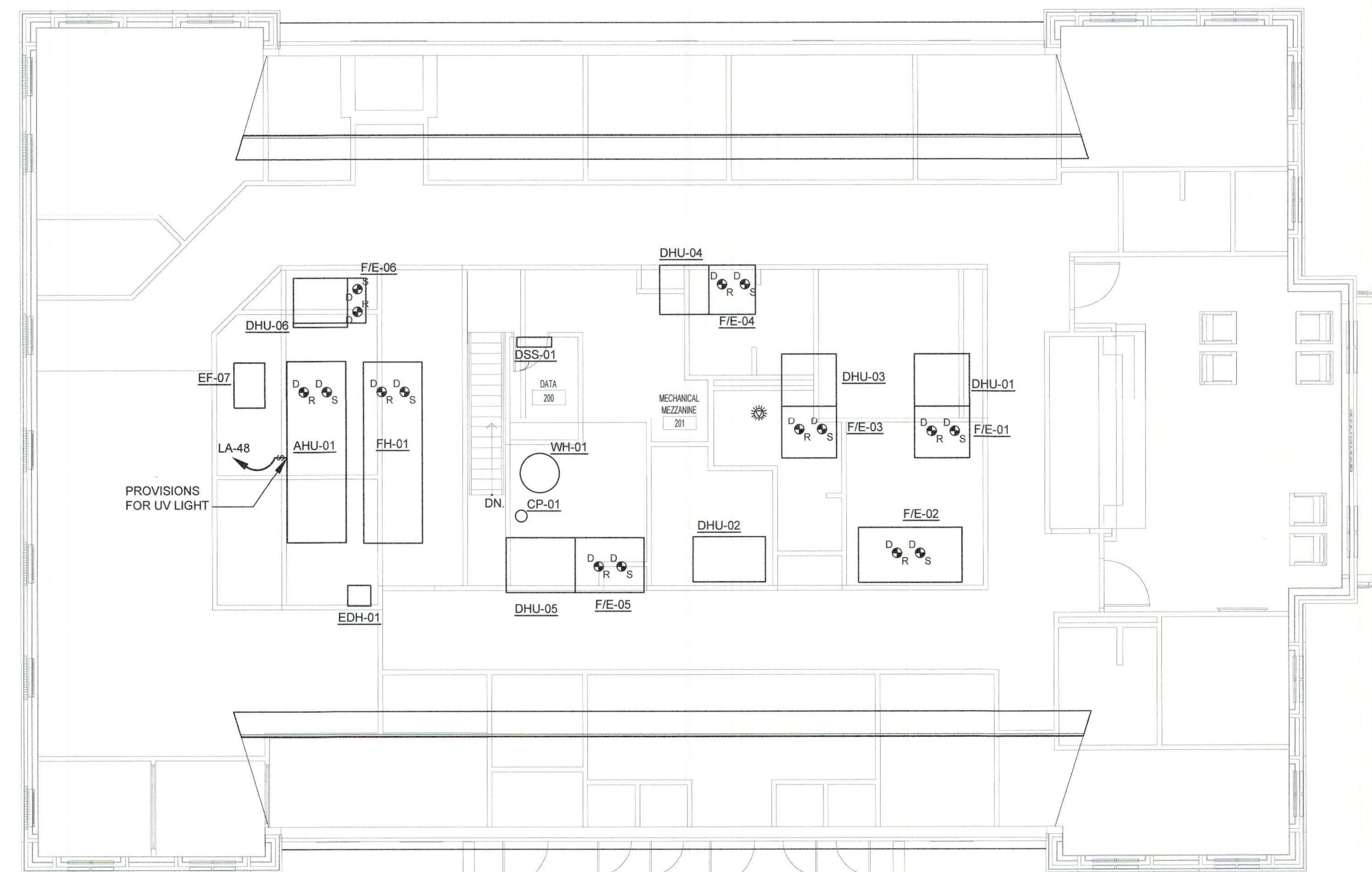
FOUNTAINS BLVD.
MADISON, MS 39110



1
E3.0 **MECHANICAL/AUXILIARY PLAN**
Scale: 1/8" = 1'-0"

MECHANICAL EQUIPMENT CONNECTIONS SCHEDULE					
MARK	VOLTAGE	PANEL	CIRCUITRY	LOCAL DISCONNECT	REMARKS
AHU-01	208V, 3Ø	EP	3#12, #12(G), 1/2"C.	30/3/1	
CU-01	208V, 1Ø	MA	2#6, #10(G), 3/4"C.	60/2/3R	
CU-02	208V, 1Ø	MA	2#10, #10(G), 3/4"C.	30/2/3R	
CU-03	208V, 1Ø	MA	2#6, #10(G), 3/4"C.	60/2/3R	
CU-04	208V, 1Ø	MA	2#12, #12(G), 1/2"C.	30/2/3R	
CU-05	208V, 1Ø	MA	2#6, #10(G), 3/4"C.	60/2/3R	
CU-06	208V, 1Ø	MA	2#10, #10(G), 3/4"C.	30/2/3R	
CU-07a	208V, 1Ø	EP	2#10, #10(G), 3/4"C.	30/2/3R	
CU-07b	208V, 1Ø	EP	2#10, #10(G), 3/4"C.	30/2/3R	
DCU-01	208V, 1Ø	MDP	2#12, #12(G), 1/2"C.	30/2/3R	INTERLOCKED WITH DSS-01
DSS-01	208V, 1Ø	MDP	2#12, #12(G), 1/2"C.	TWO POLE SWITCH (\$ ^{PS})	INTERLOCKED WITH DCU-01
F/E-01	120V, 1Ø	LB	2#10, #10(G), 3/4"C.	MOTOR RATED SWITCH (\$ ^S)	
F/E-02	120V, 1Ø	LB	2#10, #10(G), 3/4"C.	MOTOR RATED SWITCH (\$ ^S)	
F/E-03	120V, 1Ø	LB	2#10, #10(G), 3/4"C.	MOTOR RATED SWITCH (\$ ^S)	
F/E-04	120V, 1Ø	LB	2#12, #12(G), 1/2"C.	MOTOR RATED SWITCH (\$ ^S)	
F/E-05	120V, 1Ø	LB	2#10, #10(G), 3/4"C.	MOTOR RATED SWITCH (\$ ^S)	
F/E-06	120V, 1Ø	LB	2#10, #10(G), 3/4"C.	MOTOR RATED SWITCH (\$ ^S)	
DH-01	120V, 1Ø	LB	2#12, #12(G), 1/2"C.	NEMA 5-20R	
DH-02	120V, 1Ø	LB	2#12, #12(G), 1/2"C.	NEMA 5-20R	
DH-03	120V, 1Ø	LB	2#12, #12(G), 1/2"C.	NEMA 5-20R	
DH-04	120V, 1Ø	LB	2#12, #12(G), 1/2"C.	NEMA 5-20R	
DH-05	120V, 1Ø	LB	2#12, #12(G), 1/2"C.	NEMA 5-20R	
DH-06	120V, 1Ø	LB	2#12, #12(G), 1/2"C.	NEMA 5-20R	
EWH-01	208V, 1Ø	MA	2#12, #12(G), 1/2"C.	TWO POLE SWITCH (\$ ^{PS})	
EF-01	120V, 1Ø	LA	2#12, #12(G), 1/2"C.	PROVIDED WITH EQUIPMENT	INTERLOCKED WITH LIGHTS
EF-02	120V, 1Ø	LA	2#12, #12(G), 1/2"C.	PROVIDED WITH EQUIPMENT	INTERLOCKED WITH LIGHTS
EF-03	120V, 1Ø	LA	2#12, #12(G), 1/2"C.	PROVIDED WITH EQUIPMENT	INTERLOCKED WITH LIGHTS
EF-04	120V, 1Ø	LA	2#12, #12(G), 1/2"C.	PROVIDED WITH EQUIPMENT	INTERLOCKED WITH LIGHTS
EF-05	120V, 1Ø	EP	2#12, #12(G), 1/2"C.	PROVIDED WITH EQUIPMENT	INTERLOCKED WITH AHU-01
EF-06	120V, 1Ø	EP	2#12, #12(G), 1/2"C.	PROVIDED WITH EQUIPMENT	INTERLOCKED WITH AHU-01
EF-07	120V, 1Ø	LB	2#12, #12(G), 1/2"C.	PROVIDED WITH EQUIPMENT	INTERLOCKED WITH EMS SYSTEM
FH-01	208V, 1Ø	EP	2#12, #12(G), 1/2"C.	TWO POLE SWITCH (\$ ^{PS})	INTERLOCKED WITH EMS SYSTEM
FDH-01	208V, 1Ø	EP	2#1, #6(G), 1-1/4"C.	100/2/1	
CP-01	120V, 1Ø	LB	2#12, #12(G), 1/2"C.	30/1/1	
WH-01	120V, 1Ø	LB	2#12, #12(G), 1/2"C.	5-20R	

General Note 1: Prior to submitting electrical equipment brochures, the Contractor shall verify location, actual equipment submittal data and adjust equipment services accordingly.
Note A: Cord and Plug provided by mechanical contractor and installed by electrical contractor.



2
E3.0 **MECHANICAL/AUXILIARY PLAN - MEZZANINE**
Scale: 1/8" = 1'-0"

SEPTEMBER 29, 2017

CONSTRUCTION DOCUMENTS

WBA #: 2217

REVISIONS		
NO.	DESCRIPTION	DATE

E3.0

MECHANICAL/AUXILIARY
PLAN