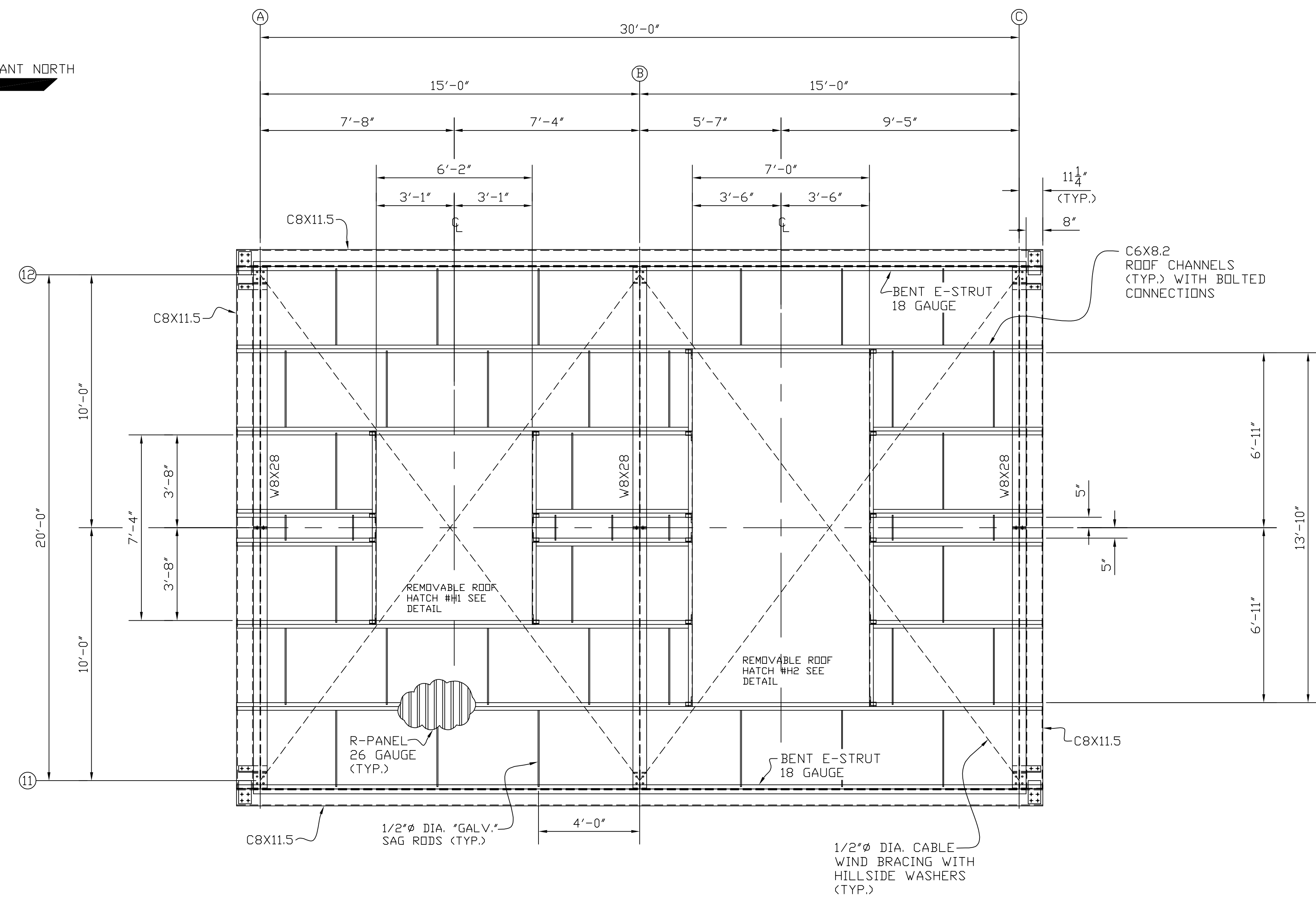
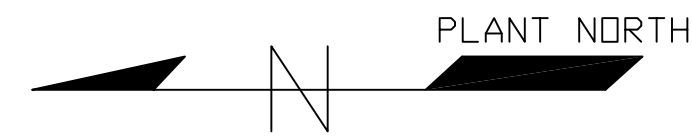


- NOTES:
- 1). ALL MATERIAL TO BE "HOT DIPPED GALVANIZED"
 - 2). VERIFY MANUFACTURER'S REQUIRED ROUGH OPENING.
 - 3). ALL ROOFING & WALLS WILL BE R-PANEL 26 GAUGE WITH TRIM COMPONENTS.
 - 4). NO GUTTERS REQUIRED.
 - 5). SEE DRAWING #PF-3555-1 FOR ELEVATION DETAILS.
 - 6). SEE DRAWING #PF-3555-3 FOR REMOVABLE HATCH (H1) DETAIL.
 - 7). SEE DRAWING #PF-3555-4 FOR REMOVABLE HATCH (H2) DETAIL.
 - 8). DOORS & LOUVERS WILL BE PURCHASED SEPARATE.
 - 9). FIELD FIT ALL (3) DOORS.

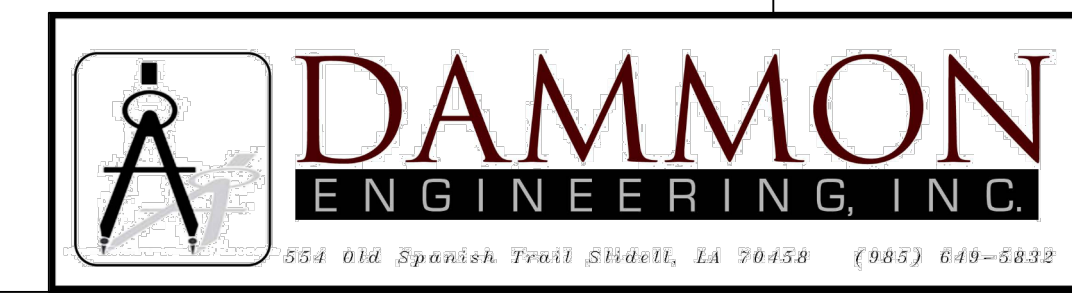


DESIGN LOADS PER ASCE 7, LATEST EDITION AS NOTED BELOW.
 * ROOF LIVE LOAD 20 PSF (MINIMUM)
 * WIND SPEED, V=158 MPH
 * RISK CATEGORY III
 * EXPOSURE C

FIREWATER PUMP BUILDING ROOF PLAN
 SCALE: 3/8"=1'-0"



PICOU-FRADELLA CONSTRUCTION, CO.
 CHALMETTE, LA.



SCALE: NOTED	APPROVED BY:	DRAWN BY: P.M.B.
DATE: 6/24/25	JOB# PF-3555	SHEET 2 OF 4
FIREWATER PUMP BUILDING		
CHEVRON	DWG#	PF-3555-2